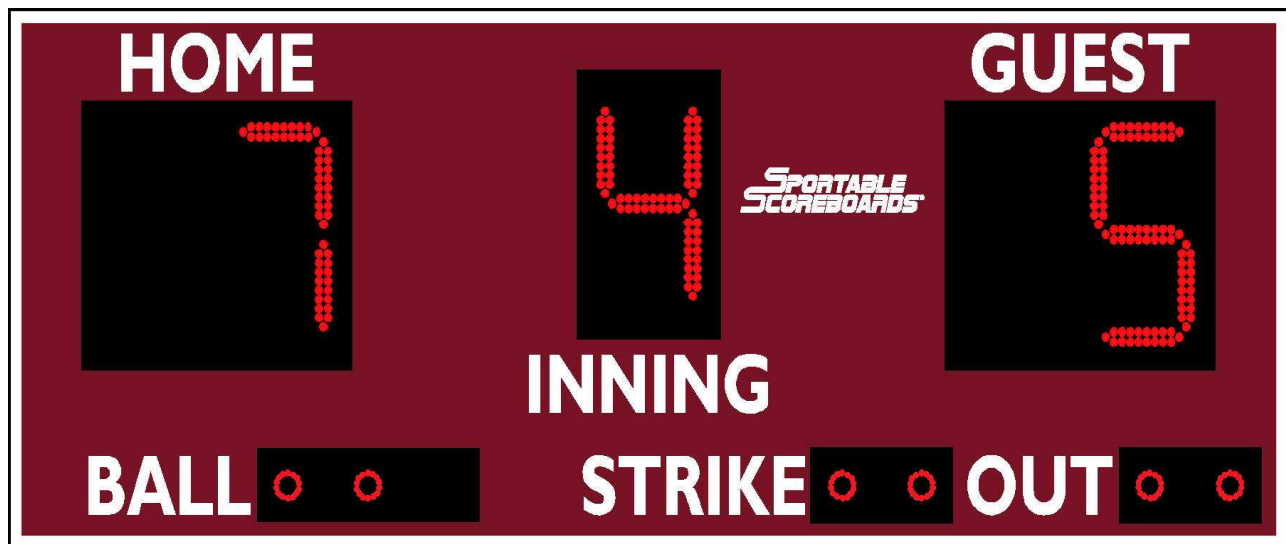


SPORTABLE SCOREBOARDS®

SCOREBOARD SPECIFICATIONS FOR



MODEL 3308 LED

www.sportablescoreboards.com

Sportable Scoreboard Inc.
106 Max Hurt Drive
Murray, KY 42071
Phone: 800-323-7745 Fax: 270-759-4112
www.sportablescoreboards.com



Lead your league with this Baseball/Softball scoreboard! Large 15" high super-bright 100,000-hour rated LED numerals are the largest with the widest viewing angle in the industry and are visible over 300 feet. The 22-gauge galvanized steel cabinet with powder-coat finish means your scoreboard is the most durable on the market and will look brand new for many years! Scoreboard package includes: operator's keyboard, digit protective shields, junction box cover (cable models only), mounting rails and a complete operation, installation, service manual and warranty details on the CD shipped with the scoreboard.

OVERALL DIMENSIONS

8.0' wide x 3.0' tall x 8.0" depth

WEIGHT

Hanging weight: 160 lbs.
Shipping weight: 200 lbs.

CONSTRUCTION

22-gauge galvanized steel cabinet with powder coat finish for strength, durability, and lasting appearance

POWER REQUIREMENTS

Scoreboard:

(1) 20-amp, 120-volt, 60-hertz, grounded AC circuit connected to an ON/OFF switch and/or circuit breaker

Controller:

Standard hand held controller

SCORING INFORMATION DISPLAYED

HOME: 2-digit displays, 0-99

GUEST: 2-digit displays, 0-99

INNING: 1-digit display, 0-9

BALL: 3 - 2.0" dot display

STRIKE and OUT: 2 - 2.0" dot display

CAPTIONS

HOME, GUEST, INNING: 4.0" tall

BALL, STRIKE, and OUT: 4.0" tall

Polymeric Calendared Vinyl Lettering

HOME, GUEST, and INNING Displays

15.0" tall, 160° visibility, red, 100,000 hour-rated, outdoor Super-Bright LED (light emitting diode) displays

Impact Resistant Acrylic Protective Digit Shields and Adjustable LED Intensity Included

BALL, STRIKE, and OUT Indicators

3.0" dot indicators, 160° visibility, red, 100,000 hour-rated, outdoor Super-Bright LED (light emitting diode) displays

Impact Resistant Acrylic Protective Digit Shields and Adjustable LED Intensity Included

APPROVALS

ETL/CSA listed

Scoreboard: Meets all FCC Class A requirements

900MHz wireless transmitter: FCC Part 15 certified

900MHz wireless receiver: Meets all FCC Part 15 requirements

WARRANTY

This product is warranted against defects in materials and workmanship for the period specified in the warranty from the date of invoice. The complete warranty details are included on the CD shipped with each unit.

SERVICE

Technical Support is available 24 hours a day, 7 days a week @ 1-800-411-3136

INSTALLATION

This model may be installed between (2) 8" OD steel, schedule 40 poles; or (2) 8" I-beams, minimum. Hole depth /diameter as well as pole/concrete specifications must be based on customer's local building codes, soil conditions, and wind loads. Mounting rails are supplied.

Support structure and mounting hardware supplied by installer/others

SCOREBOARD CONTROLLER

Dimensions: 2-1/4" X 1-1/4" tapered height x 6.0" width x 7.0" depth. **Weight:** 1lb.

The hand held controller available with this scoreboard is microprocessor-controlled, molded of high-impact ABS plastic, has a tactile membrane keypad. Options include 900 MHz wireless control and internal battery pack.

Cable-Controlled System (standard) Includes:

- (1) Hand held controller
- (1) BASEBALL/SOFTBALL keypad insert
- (1) Junction box cover with receptacle (to be installed at scorekeeper's location)
- (1) 20-ft. signal cable (used to connect the keyboard to the junction box receptacle)
- (1) Project-specific length of 4 wire twisted pair, shielded control cable

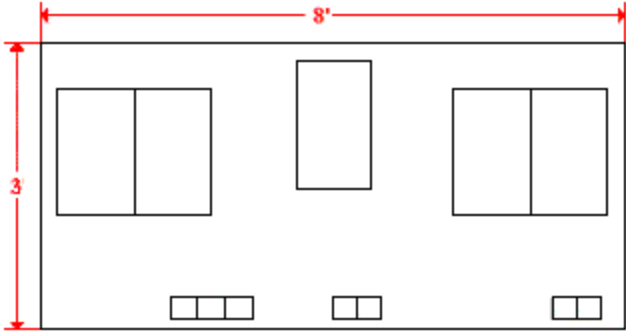
900MHz Wireless built into hand held controller (optional) Includes:

- (1) Hand held controller (internal battery pack – 4 AA batteries)
- (1) BASEBALL/SOFTBALL keypad insert

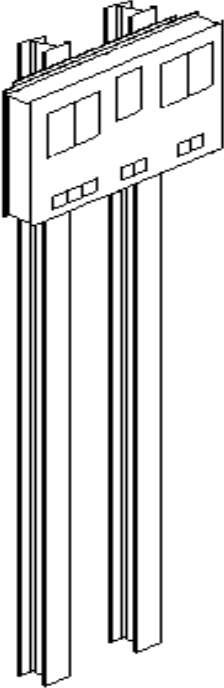
OPTIONS

- Wireless Remote Control System
- Wireless Remote Control Battery Option
- Solar-Charged Battery Power
- Rechargeable Battery Power
- Locking Sponsor Panel
- Sponsor/Logo Panels
- Custom Logos
- Custom Lettering
- Controller Carry Case
- 10-Year Limited Warranty

Scoreboard Dimensions:
3.0' tall x 8.0' wide x 8.0" depth



Front View: Mounted



Rear View: Mounted

