

# SPORTABLE SCOREBOARDS®

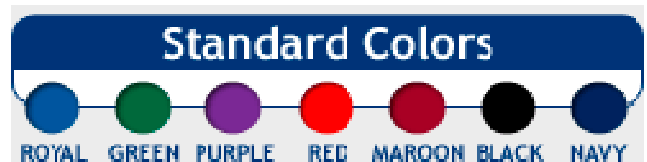
## SCOREBOARD SPECIFICATIONS FOR

<b>BALL</b> 3	<b>STRIKE</b> 0	<b>OUT</b> 2								
<small>SPORTABLE SCOREBOARDS®</small>	1	2	3	4	5	6	7	8	9	<b>TOTAL</b>
<b>GUEST</b>	0	0	1	0	0	0				01
<b>HOME</b>	0	0	4	0	1					05

## MODEL 3320 LED

[www.sportablescoreboards.com](http://www.sportablescoreboards.com)

Sportable Scoreboards Inc.  
106 Max Hurt Drive  
Murray, KY 42071  
Phone: 800-323-7745 Fax: 270-759-4112  
[www.sportablescoreboards.com](http://www.sportablescoreboards.com)



Lead your league with this Baseball/Softball scoreboard! Large 15" high super-bright 100,000-hour rated LED numerals are the largest with the widest viewing angle in the industry and are visible over 300 feet. The 22-gauge galvanized steel cabinet with powder-coat finish means your scoreboard is the most durable on the market and will look brand new for many years! Scoreboard package includes: operator's keyboard, digit protective shields, junction box cover (cable models only), mounting rails and a complete operation, installation, service manual and warranty details on the CD shipped with each scoreboard.

### **OVERALL DIMENSIONS**

20.0' long x 8.0' tall x 8.0" depth

### **WEIGHT**

Hanging weight: 995 lbs.  
Shipping weight: 1250 lbs.

### **CONSTRUCTION**

22-gauge galvanized steel cabinet with powder coat finish for strength, durability, and lasting appearance

### **POWER REQUIREMENTS**

#### **Scoreboard:**

(1) 20-amp, 120-volt, 60-hertz, grounded AC circuit connected to an ON/OFF switch and/or circuit breaker

#### **Controller:**

Standard LCD controller powered by 12V DC Adapter or an optional internal battery.

### **SCORING INFORMATION DISPLAYED**

**INNING SCORING:** 9 - 1-digit displays, 0-9, Home and Guest

**BALL:** 1-digit display, 0-9

**STRIKE:** 1-digit display, 0-9

**OUT:** 1-digit display, 0-9

**TOTAL RUNS:** 2-digit displays, 0-99, Home and Guest

### **CAPTIONS**

**HOME and GUEST:** 13" tall

**INNING Numbers:** 9.5" tall

**BALL, STRIKE, and OUT:** 12" tall

**TOTAL:** 9.5" tall

**Polymeric Calendared Vinyl Lettering**

#### **HOME and GUEST INNING SCORING Displays**

15.0" tall, 160° visibility, red, 100,000 hour-rated, outdoor Super-Bright LED (light emitting diode) displays  
**Impact Resistant Acrylic Protective Digit Shields and Adjustable LED Intensity Included**

#### **BALL, STRIKE, OUT, and Total Displays**

15.0" tall, 160° visibility, red, 100,000 hour-rated, outdoor Super-Bright LED (light emitting diode) displays  
**Impact Resistant Acrylic Protective Digit Shields and Adjustable LED Intensity Included**

## **APPROVALS**

ETL/CSA listed

**Scoreboard:** Meets all FCC Class A requirements

**900 MHz wireless transmitter:** FCC Part 15 certified

**900 MHz wireless receiver:** Meets all FCC Part 15 requirements

## **WARRANTY**

This product is warranted against defects in materials and workmanship for the period specified in the warranty from the date of invoice. The complete warranty details are included on the CD shipped with each unit.

## **SERVICE**

**Technical Support is available 24 hours a day, 7 days a week @ 1-800-411-3136**

An access panel on the back of the scoreboard allows easy access to the electronic module, (the only working part of the scoreboard), for ease of replacement/servicing. These universal, plug-in electronic modules are used in all of the manufacturer's scoreboards using outdoor LED displays, and are 100% interchangeable between any of the manufacturer's outdoor, permanent LED scoreboards. If you have any questions contact the Scoreboard Service Company at 800-411-3136.

## **INSTALLATION**

This model may be installed between (2) 8" OD steel, schedule 40 poles; or (2) 8" I-beams, minimum. Hole depth /diameter as well as pole/concrete specifications must be based on customer's local building codes, soil conditions, and wind loads. Mounting rails are supplied.

***Support structure and mounting hardware supplied by installer/others***

## **SCOREBOARD CONTROLLER**

**Dimensions:** 2.5" height x 14.0" width x 7.0" depth. **Weight:** 2.10 lbs.

The keyboard controller available with this scoreboard is microprocessor-controlled, molded of high-impact ABS plastic, has a tactile membrane keypad. Options include 900 MHz wireless control and internal battery pack with automatic battery charger.

### **Cable-Controlled System (standard) Includes:**

- (1) Keyboard controller
- (3) BASEBALL/SOFTBALL keypad inserts
- (1) Junction box covers with receptacle (to be installed at scorekeeper's location)
- (1) 20-ft. signal cable (used to connect the keyboard to the junction box receptacle)
- (1) Project-specific length of 4 wire twisted pair, shielded control cable

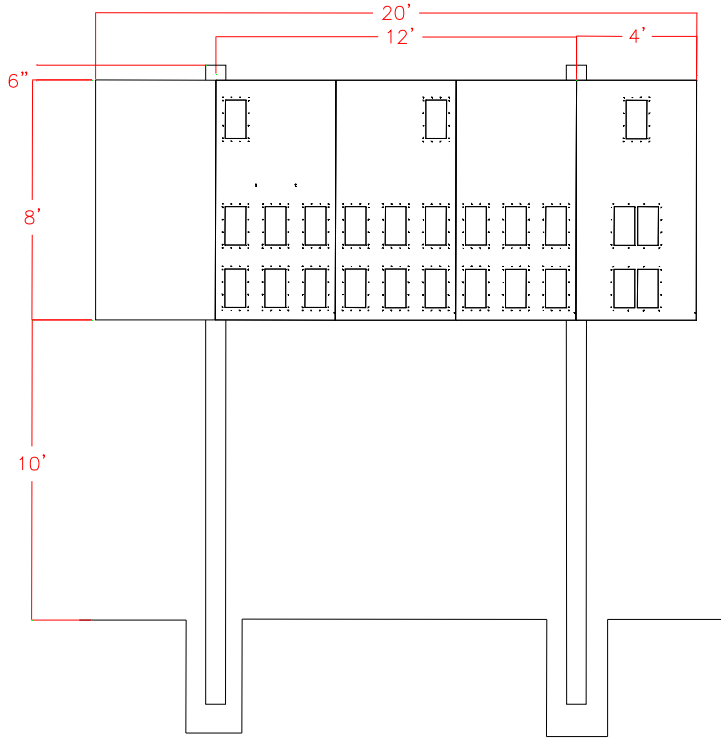
### **900 MHz Wireless System (optional) Includes:**

- (1) Universal LCD keyboard controller (internal battery pack with built-in charger)
- (3) BASEBALL/SOFTBALL keypad inserts
- (1) 12-volt DC wall transformer
- (1) 900 MHz transmitter (connects to keyboard controller via supplied interface cable)
- (1) 900 MHz receiver (connects to the scoreboard, eliminating control cable and junction box installation)

## **OPTIONS**

Wireless Remote Control System  
Wireless Remote Control Battery Option  
Solar-Charged Battery Power  
Rechargeable Battery Power  
Sponsor/Logo Panels  
Custom Logos  
Custom Lettering  
Controller Carry Case  
Electronic Message Center

Front View: Mounted



Rear View: Mounted

