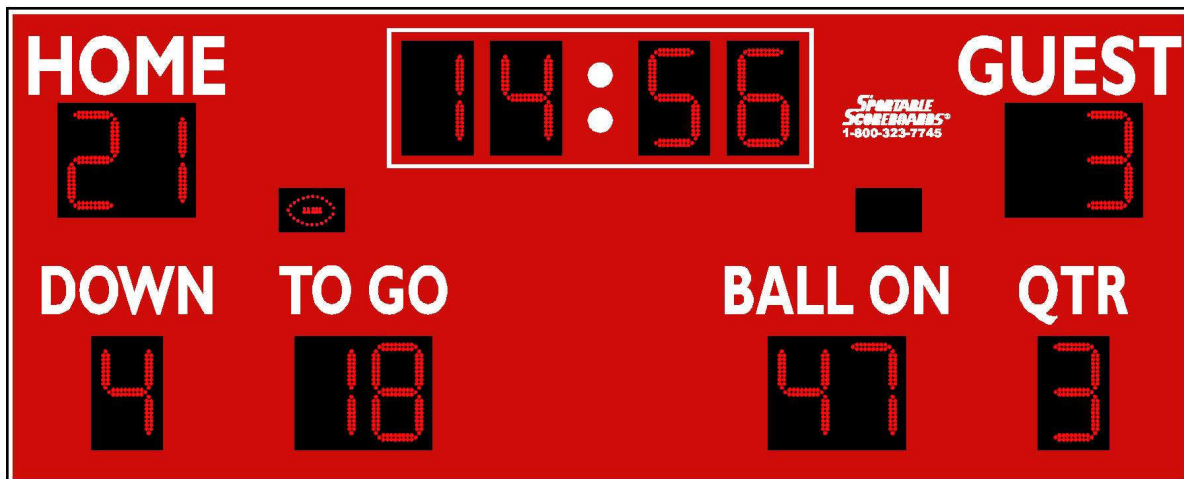


# SPORTABLE SCOREBOARDS®

## SCOREBOARD SPECIFICATIONS FOR



**MODEL 7420LED**

[www.sportablescoreboards.com](http://www.sportablescoreboards.com)

Sportable Scoreboards  
106 Max Hurt Drive  
Murray, KY 420071  
Phone: 800-323-7745 Fax: 270-759-4112  
[www.sportablescoreboards.com](http://www.sportablescoreboards.com)



## **SCOREBOARD SPECIFICATIONS**

## **MODEL 7420LED**

Lead your organization with this Football scoreboard! Large 20" high super-bright 100,000-hour rated LED numerals are the largest with the widest viewing angle in the industry and are visible over 300 feet. The 22-gauge galvanized steel cabinet with powder-coat finish means your scoreboard is the most durable on the market and will look brand new for many years! Scoreboard package includes: operator's keyboard, digit protective shields, junction box cover (cable models only), mounting rails and a complete operation, installation, service manual and warranty details are included on the CD shipped with each scoreboard.

### **OVERALL DIMENSIONS**

20' wide x 8' tall x 8.0" depth

### **WEIGHT**

Hanging weight: 970 lbs.  
Shipping weight: 1300 lbs.

### **CONSTRUCTION**

22-gauge galvanized steel cabinet with powder coat finish for strength, durability, and lasting appearance

### **POWER REQUIREMENTS**

#### **Scoreboard:**

(1) 20-amp, 120-volt, 60-hertz, grounded AC circuit connected to an ON/OFF switch and/or circuit breaker

#### **Controller:**

Standard LCD controller powered by 12V AC Adapter or an optional internal battery.

### **SCORING INFORMATION DISPLAYED**

**HOME and GUEST:** 2 - digit displays, 0-99

**TO GO:** 2 - digit display, 0-99

**BALL ON:** 2 - digit display, 0-99

**DOWN and QUARTER:** 1 - digit display, 0-9

**CLOCK:** 4 - digit displays, counts up or down, 99:59-00:00 or 00:00-99:59

**POSSESSION INDICATORS:** 2 - football displays

### **CAPTIONS**

**HOME and GUEST:** 12.0" tall

**TO GO:** 10.0" tall

**DOWN:** 10.0" tall

**BALL ON:** 10.0" tall

**QTR:** 12.0" tall

**CLOCK COLON:** 5.0" tall

**Polymeric Calendared Vinyl Lettering**

### **HOME, GUEST, DOWN, TO GO, BALL ON, QTR and CLOCK Displays**

20.0" tall, 160° visibility, red, 100,000 hour-rated, outdoor Super-Bright LED (light emitting diode) displays  
**Impact Resistant Acrylic Protective Digit Shields and Adjustable LED Intensity Included**

### **POSSESSION Displays**

6.5" tall football indicators, 160° visibility, red, 100,000 hour-rated, outdoor Super-Bright LED (light emitting diode) displays

**Impact Resistant Acrylic Protective Digit Shields and Adjustable LED Intensity Included**

## APPROVALS

ETL/CSA listed

**Scoreboard:** Meets all FCC Class A requirements

**2.4GHz wireless transmitter:** FCC Part 15 certified

**2.4GHz wireless receiver:** Meets all FCC Part 15 requirements

## WARRANTY

This product is warranted against defects in materials and workmanship for the period specified in the warranty from the date of invoice. The complete warranty details are included on the CD shipped with each unit.

## SERVICE

**Technical Support is available 24 hours a day, 7 days a week @ 1-800-411-3136**

## INSTALLATION

This model may be installed between (2) 8" OD steel, schedule 40 poles; or (2) 8" I-beams, minimum. Hole depth /diameter as well as pole/concrete specifications must be based on customer's local building codes, soil conditions, and wind loads. Mounting rails are supplied.

**Support structure and mounting hardware supplied by installer/others**

## SCOREBOARD CONTROLLER

**Dimensions:** 2.5" height x 14.0" width x 7.0" depth. **Weight:** 2.10 lbs.

The keyboard controller available with this scoreboard is microprocessor-controlled, molded of high-impact ABS plastic, has a tactile membrane keypad. Options include 2.4GHz wireless control and external battery pack with automatic battery charger.

**Cable-Controlled System (standard) Includes:**

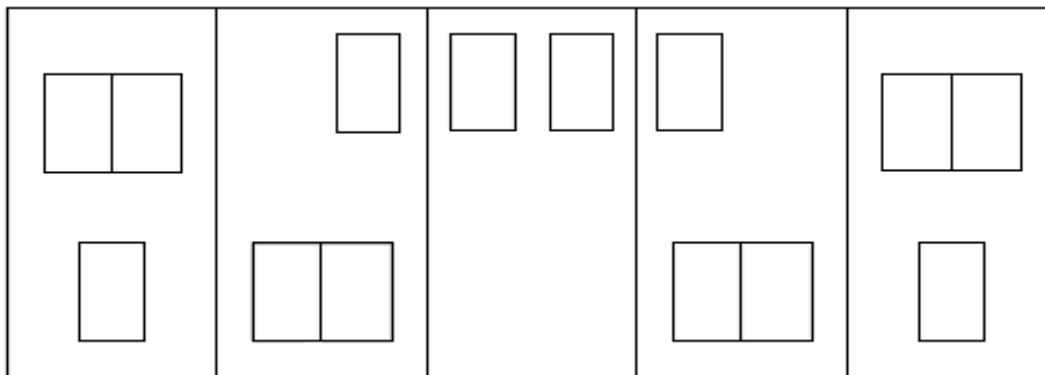
- (1) Keyboard controller
- (3) FOOTBALL keypad inserts
- (1) Junction box cover with receptacle (to be installed at scorekeeper's location)
- (1) 20-ft. signal cable (used to connect the keyboard to the junction box receptacle)
- (1) Project-specific length of 4 wire twisted pair, shielded control cable

**2.4GHz Wireless System (optional) Includes:**

- (1) Universal LCD keyboard controller (internal battery pack with built-in charger)
- (3) FOOTBALL keypad inserts
- (1) 12-volt DC wall transformer
- (1) 2.4GHz transmitter (connects to keyboard controller via supplied interface cable)
- (1) 2.4GHz receiver (connects to the scoreboard, eliminating control cable and junction box installation)

## OPTIONS

See Sportable Scoreboards catalog #67 for full list of options



**SCOREBOARD DIMENSIONS:  
20' wide X 8' tall X 8" depth**