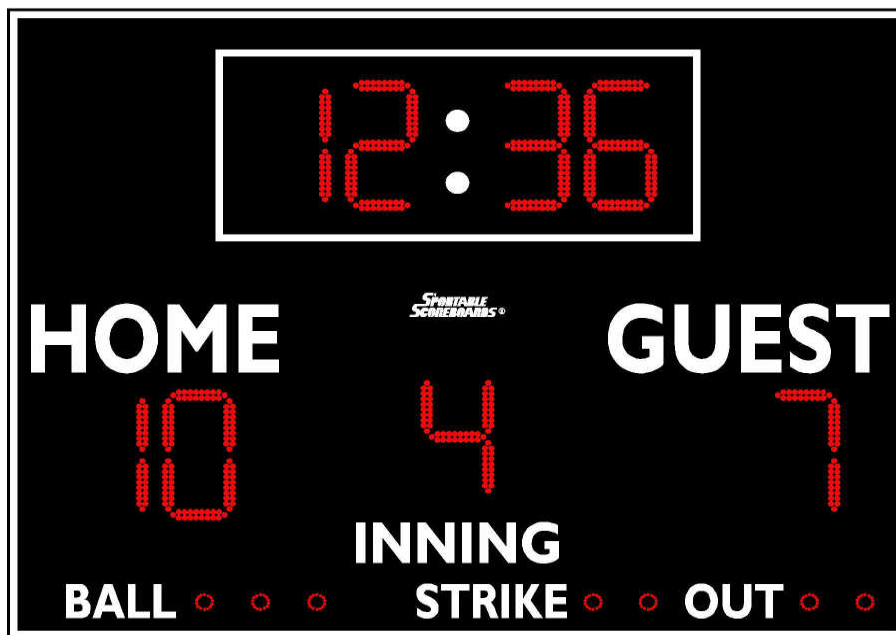


SPORTABLE SCOREBOARDS®

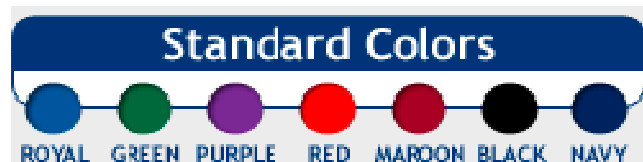
SCOREBOARD SPECIFICATIONS FOR



MODEL 3312 LED

www.sportablescoreboards.com

Sportable Scoreboards Inc.
106 Max Hurt Drive
Murray, KY 42071
Phone: 800-323-7745 Fax: 270-759-4112
www.sportablescoreboards.com



Lead your league with this Baseball/Softball scoreboard! Large 15" high super-bright 100,000-hour rated LED numerals are the largest with the widest viewing angle in the industry and are visible over 300 feet. The 22-gauge galvanized steel cabinet with powder-coat finish means your scoreboard is the most durable on the market and will look brand new for many years! Scoreboard package includes: operator's keyboard, digit protective shields, junction box cover (cable models only), mounting rails and a complete operation, installation, service manual and warranty details on the CD Shipped with each scoreboard.

OVERALL DIMENSIONS

8.0' wide x 6.0' tall x 8.0" depth

WEIGHT

Hanging weight: 275 lbs.
Shipping weight: 375 lbs.

CONSTRUCTION

22-gauge galvanized steel cabinet with powder coat finish for strength, durability, and lasting appearance

POWER REQUIREMENTS**Scoreboard:**

(1) 20-amp, 120-volt, 60-hertz, grounded AC circuit connected to an ON/OFF switch and/or circuit breaker

Controller:

Standard LCD controller powered by 12V DC Adapter or an optional internal battery.

SCORING INFORMATION DISPLAYED

HOME: 2 - digit displays, 0-99
GUEST: 2 - digit displays, 0-99
INNING: 1- digit display, 0-9
BALL: 3 – 2.0" dot displays
STRIKE: 2 – 2.0" dot displays
OUT: 2 – 2.0" dot displays
CLOCK: 4 - digit displays, 0-99

CAPTIONS

HOME and GUEST: 8" tall
INNING: 4.75" tall
BALL, STRIKE and OUT: 4" tall
CLOCK COLON: 2 – 2.5" tall
Polymeric Calendared Vinyl Lettering

HOME, GUEST, CLOCK, and INNING Displays

15.0" tall, 160° visibility, red, 100,000 hour-rated, outdoor Super-Bright LED (light emitting diode) displays
Impact Resistant Acrylic Protective Digit Shields and Adjustable LED Intensity Included

BALL, STRIKE and OUT Indicators

3.0" dot indicators, 160° visibility, red, 100,000 hour-rated, outdoor Super-Bright LED (light emitting diode) displays
Impact Resistant Acrylic Protective Digit Shields and Adjustable LED Intensity Included

APPROVALS

ETL/CSA listed

Scoreboard: Meets all FCC Class A requirements

900 MHz wireless transmitter: FCC Part 15 certified

900 MHz wireless receiver: Meets all FCC Part 15 requirements

WARRANTY

This product is warranted against defects in materials and workmanship for the period specified in the warranty from the date of invoice. The complete warranty details are included on the CD shipped with each unit.

SERVICE

Technical Support is available 24 hours a day, 7 days a week @ 1-800-411-3136

INSTALLATION

This model may be installed between (2) 8" OD steel, schedule 40 poles; or (2) 8" I-beams, minimum. Hole depth /diameter as well as pole/concrete specifications must be based on customer's local building codes, soil conditions, and wind loads. Mounting rails are supplied.

Support structure and mounting hardware supplied by installer/others

SCOREBOARD CONTROLLER

Dimensions: 2.5" height x 14.0" width x 7.0" depth. **Weight:** 2.10 lbs.

The keyboard controller available with this scoreboard is microprocessor-controlled, molded of high-impact ABS plastic, has a tactile membrane keypad. Options include 900 MHz wireless control and internal battery pack with automatic battery charger.

Cable-Controlled System (standard) Includes:

- (1) Keyboard controller
- (3) BASEBALL/SOFTBALL keypad inserts
- (1) Junction box covers with receptacle (to be installed at scorekeeper's location)
- (1) 20-ft. signal cable (used to connect the keyboard to the junction box receptacle)
- (1) Project-specific length of 4 wire twisted pair, shielded control cable

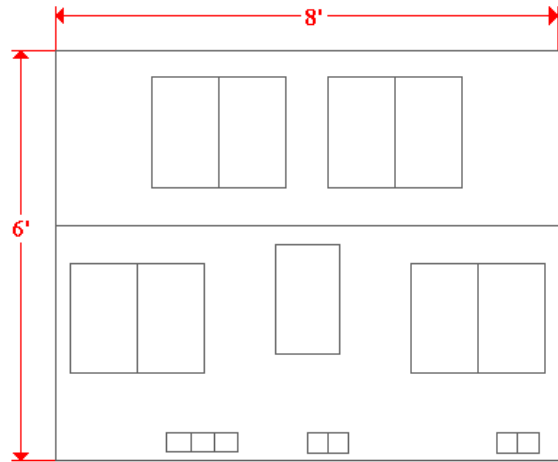
900 MHz Wireless System (optional) Includes:

- (1) Universal LCD keyboard controller (internal battery pack with built-in charger)
- (3) BASEBALL/SOFTBALL keypad inserts
- (1) 12-volt DC wall transformer
- (1) 900 MHz transmitter (connects to keyboard controller via supplied interface cable)
- (1) 900 MHz receiver (connects to the scoreboard, eliminating control cable and junction box installation)

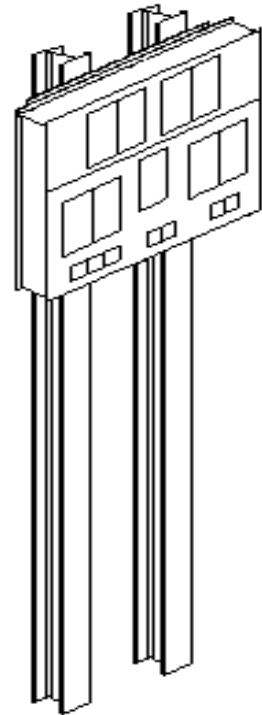
OPTIONS

Wireless Remote Control AC System
Wireless Remote Control Battery Option
Football Conversion Kit
Soccer Conversion Kit
Solar-Charged Battery Power
Rechargeable Battery Power
Loud Outdoor Horn
Sponsor/Logo Panels
Custom Logos
Custom Lettering
Controller Carry Case
10-Year Limited Warranty
Electronic Message Center

Scoreboard Dimensions:
6' tall x 8' wide x 8.0" depth



Front View: Mounted



Rear View: Mounted

