



-- MULTI-PURPOSE GAME STANDARD --

Installation Instructions

PARTS LIST (QTY: SINGLE UPRIGHT)			Model Number	
ITEM	PART #	DESCRIPTION	AS-475	MP-500 MP-521
1	*BASE	ROUND WEIGHTED GAME BASE	1 ea.	1 ea.
2	MP52U-1	TOP SECTION w/ SWAGE	1 ea.	1 ea.
3	MP52U-2	BOTTOM SECTION w/o SWAGE	1 ea.	1 ea.
4	BASEPIN	3/8"-16 x 3-1/2" SAFETY BOLT	1 ea.	1 ea.
5	**N/A	HEX BOLT M10x70mm LONG	2 ea.	2 ea.
6	N/A	HEX BOLT M10x25mm LONG	2 ea.	2 ea.
7	**N/A	LOCK NUT M10	2 ea.	2 ea.
8	**N/A	WHEELS	2 ea.	2 ea.
9	***N/A	EYE BOLT w/ NUT	2 ea.	2 ea.
10	***N/A	SLIDING COLLARS	2 ea.	2 ea.
11	HM5051	SNAP BUTTON	1 ea.	1 ea.
12	EP0024	END CAP	1 ea.	1 ea.
13	C391	NYLON ROPE x 18 FT	1 ea.	N/A
14	HB193	1/4-20 x 3" EYE BOLT, ZP	1 ea.	N/A
15	HN257	1/4-20 WING NUT CAST, ZP	1 ea.	N/A

NOTES: *Bases are different in weights and colors.

**These items are available in a kit part # GSWHK-1 / GSWHK-2 (newer bases get a deferent wheel)

***Replacement collar kit, part # 151RP for a set of 4

Bases for AS-475 are only available in 75 lbs with red or royal blue colors.

Bases for MP-500 are only available in 145 lbs with red, royal blue, green, white or yellow colors.

Bases for MP-521 are only available in 220 lbs with red or royal blue colors.



Call Jaypro Sports Equipment at 1-800-243-0533 during regular business hours for technical support.

www.jaypro.com

IMPORTANT NOTICE:

- 1) FOR SAFE OPERATION AND CONTINUED HIGH PERFORMANCE FROM THIS EQUIPMENT, INSPECTION AND MAINTENANCE MUST BE PERFORMED BEFORE EACH USE.
- 2) USE OF THIS EQUIPMENT OTHER THAN INTENDED, MAY BE HAZARDOUS.
- 3) ALTERATION OR MODIFICATION OF EQUIPMENT MAY BE HAZARDOUS. FOR REPAIR OR REPLACEMENT, PLEASE CALL YOUR DEALER OR JAYPRO SPORTS.

Tools Require:

- 1) Adjustable Wrench or 17mm Socket/Open end wrench
 - Unpack all parts and check against parts list to ensure that all have been included.
 - Inspect all parts for damage. Report any damages to the trucking company.

IMPORTANT SAFETY NOTE:

The nature and purpose of this equipment requires that the base carry considerable weight. Please exercise reasonable caution when moving the base from one location to another. For best results, stand behind the stanchion near the wheels, grasp the upright and place your foot on the axel between the wheels. Then pull back on the upright until the wheels have touched the floor. Hold the upright firmly and balanced the unit on its wheels. Point the base in the proper direction and push, never pull, the unit toward the chosen location. Exercise additional caution and attention when crossing door jams, floor grates, or other obstructions.

CAUTION

DO NOT ALLOW ANY PERSONS TO APPROACH THE VICINITY OF THE UNIT WHILE IT IS BEING TRANSPORTED. KEEP ALL PERSONS CLEAR OF THE BASE WHILE IT IS TILTED ON ITS SIDE.

IMPORTANT SAFETY NOTICE

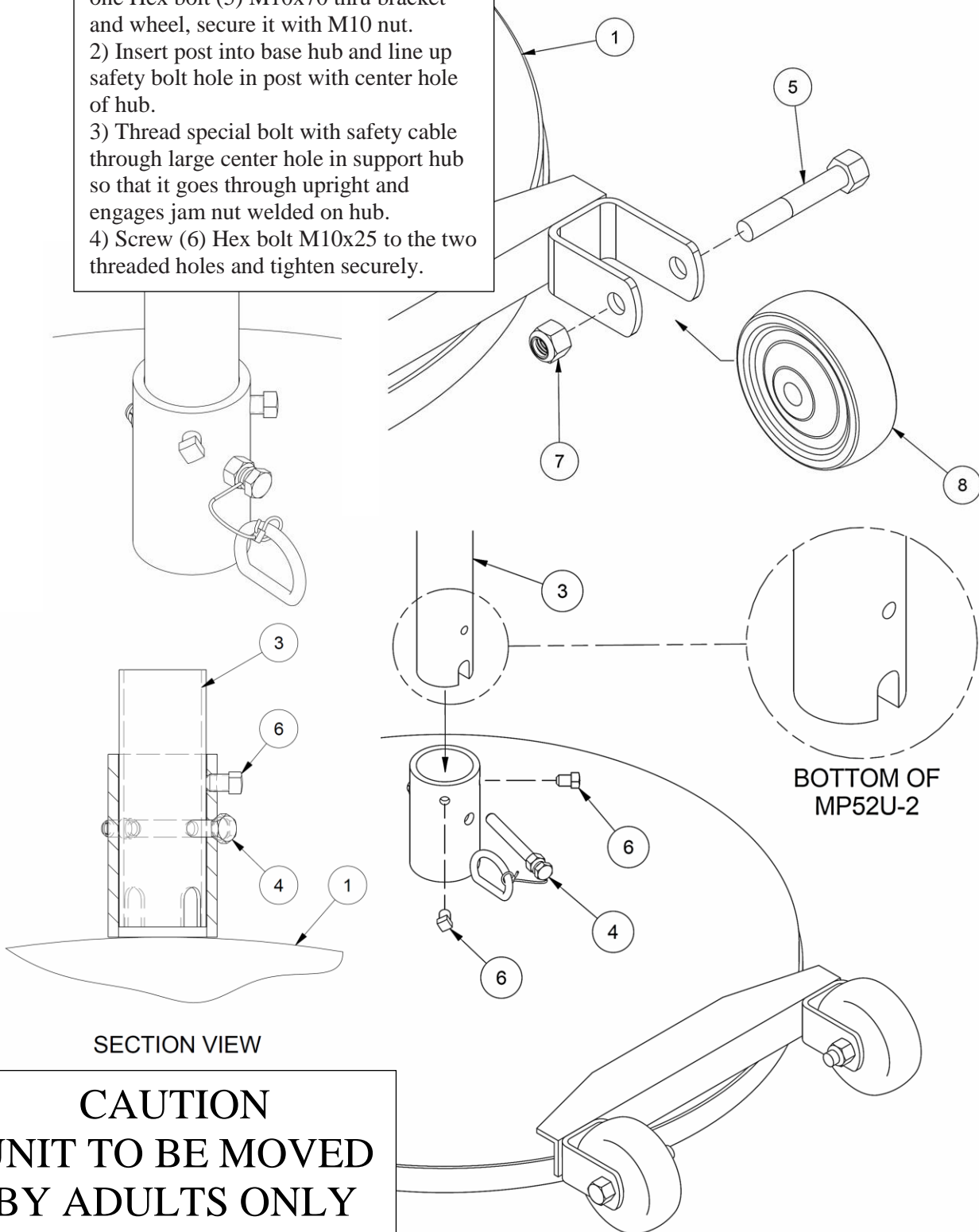
Portable multi-purpose game standards can be dangerous if not properly assembled, inspected, maintained and used. Under certain conditions, the assembly fasteners, wheels or other important components may fail causing serious injury to the users. Please read the following guidelines and pass this information along to all involved individuals.

USE AND MAINTENANCE GUIDELINES

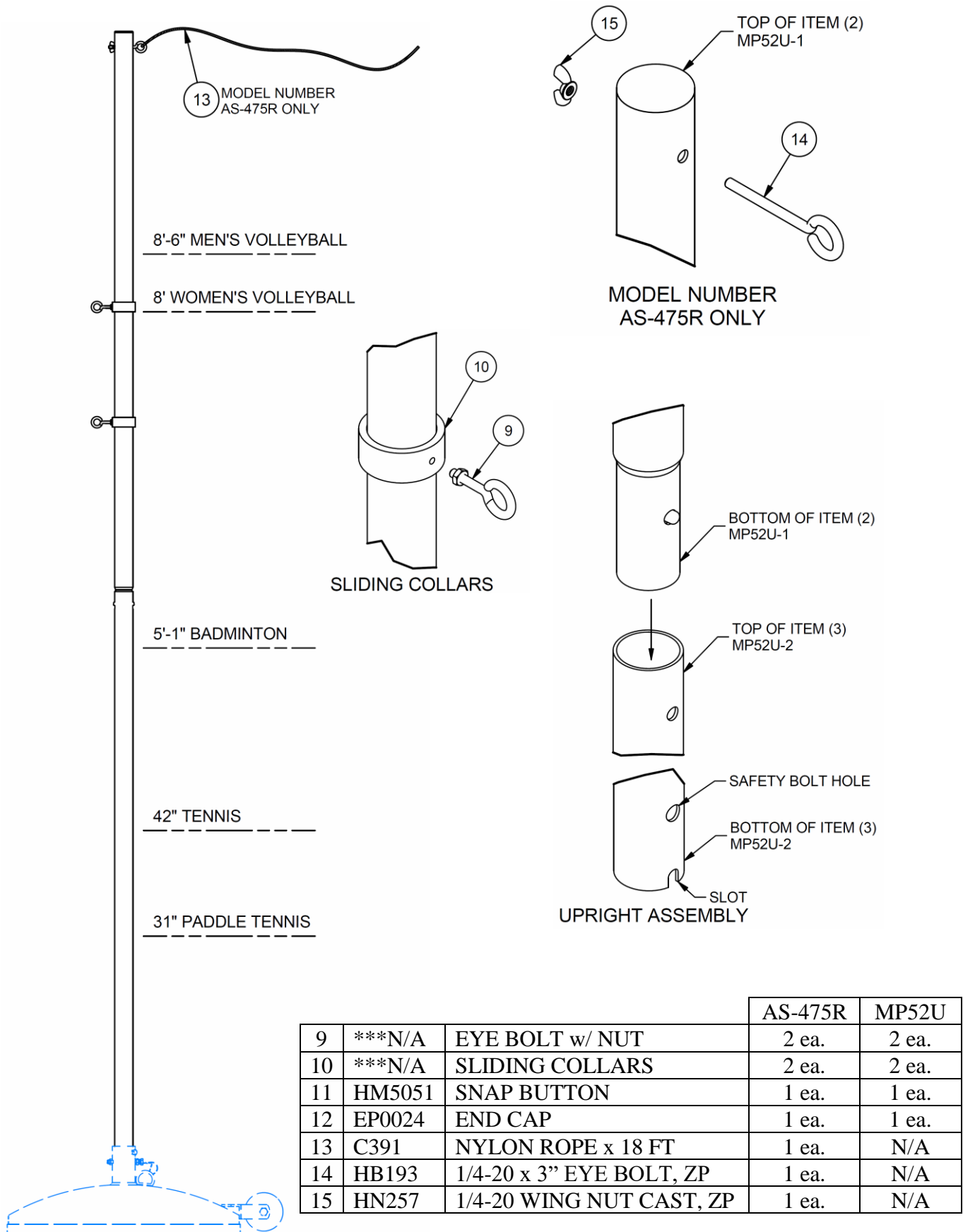
- 1) Game standards are sophisticated and complex gymnasium apparatus and require set-up and handling by trained supervisory personnel only. Do not allow untrained individuals, such as students, to assemble, set-up, or move portable game standards.
- 2) Inspect each standard fully before every use. Check that all fasteners are installed correctly and that none of the moving parts show signs of excessive wear. Questionable parts should be removed from service and replace immediately.
- 3) The performance nature of many portable game standards requires a heavy base weight for proper stability. Under all circumstances, and particularly when the standards are being moved over door thresholds or other obstruction, extreme care and caution while handling these units is vital.
- 4) If the instructional or cautionary labels included with the game standards become worn or faded with use and time, contact the manufacturer or distributor for replacement immediately.
- 5) Older game standards are particularly susceptible to malfunction due to the cumulative effects of constant use and material fatigue. Product in excess of ten years old should be seriously considered for replacement.
- 6) Do not alter the original product or use the product for any purpose other than that for which it was designed and intended to be used.

Assembly:

- 1) Put wheel in the wheel bracket, slide one Hex bolt (5) M10x70 thru bracket and wheel, secure it with M10 nut.
- 2) Insert post into base hub and line up safety bolt hole in post with center hole of hub.
- 3) Thread special bolt with safety cable through large center hole in support hub so that it goes through upright and engages jam nut welded on hub.
- 4) Screw (6) Hex bolt M10x25 to the two threaded holes and tighten securely.



MP52U



			AS-475R	MP52U
9	***N/A	EYE BOLT w/ NUT	2 ea.	2 ea.
10	***N/A	SLIDING COLLARS	2 ea.	2 ea.
11	HM5051	SNAP BUTTON	1 ea.	1 ea.
12	EP0024	END CAP	1 ea.	1 ea.
13	C391	NYLON ROPE x 18 FT	1 ea.	N/A
14	HB193	1/4-20 x 3" EYE BOLT, ZP	1 ea.	N/A
15	HN257	1/4-20 WING NUT CAST, ZP	1 ea.	N/A