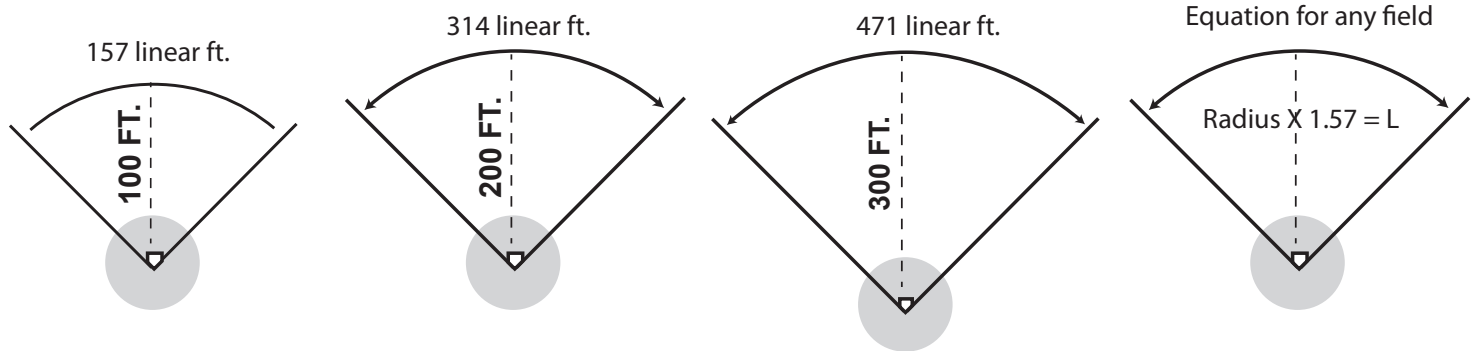


Suggested Tools Needed

Baby Sledge Hammer, 330' Measuring Tape, 500' Spool of Twine. Chalk/Spray Paint, Ground Auger

STEP 1: PRE-INSTALLATION PREP/LAYOUT

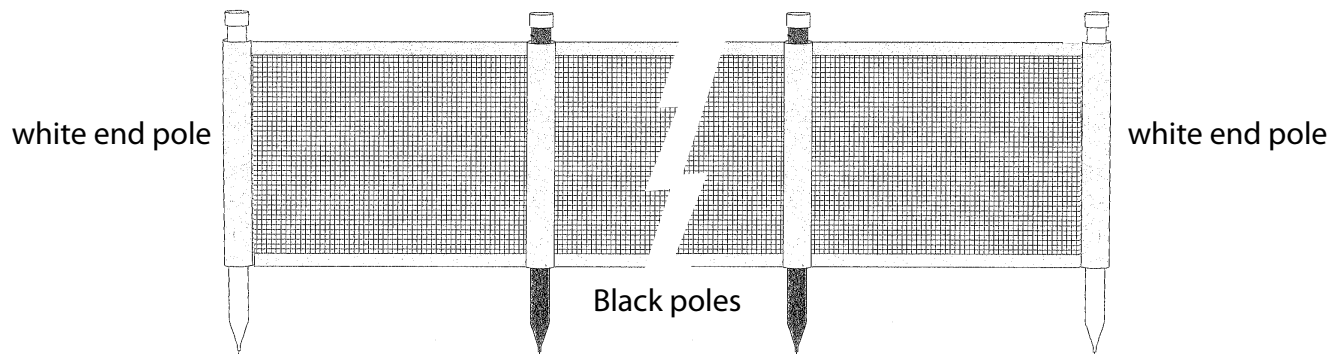
- 1) Using the Measuring Tape, Determine the Radius or Distance of the Outfield Fence from Home Plate.
- 2) Spray Paint/Chalk that Radius Line-Foul Line to Foul Line as your guide.



STEP 2: UNROLL AND LAY OUT THE ENTIRE FENCE along your "Radius" Line

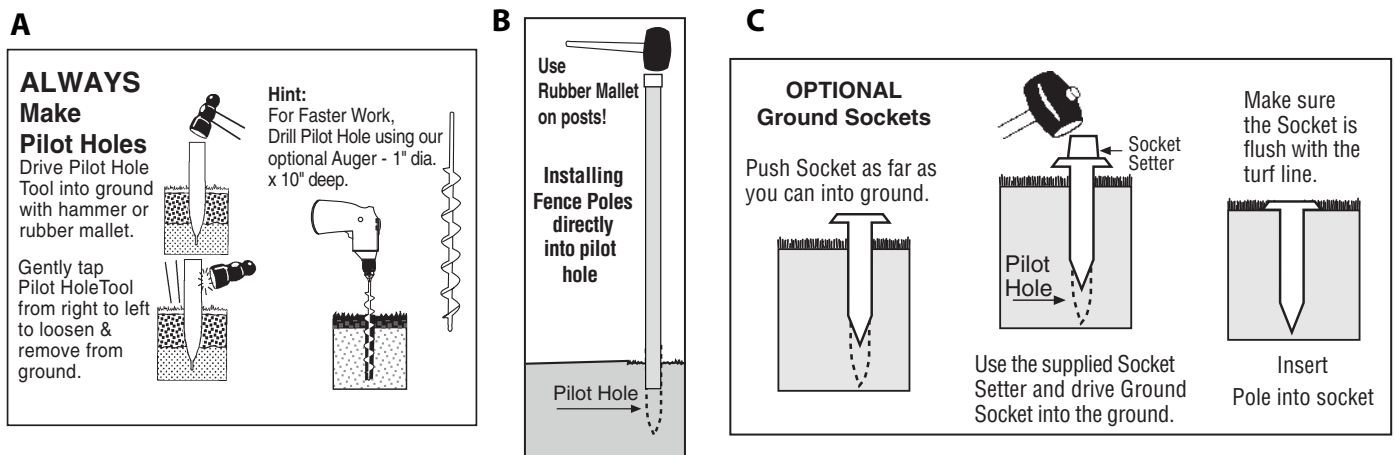
STEP 3: INSERT ALL ENDURO POLES into the vinyl pockets/sleeves

- A) The pockets/sleeves are sewn on backside of the fence
- B) Insert White Poles into the end pockets/sleeve
- C) Insert all Black Poles into remaining pockets/sleeves

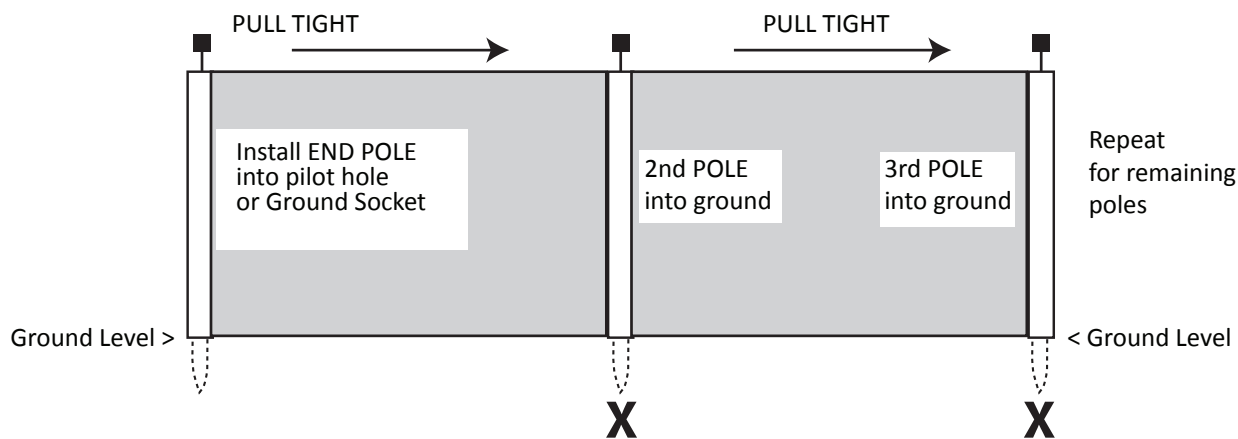


STEP 4: LOCATE & CREATE A "PILOT HOLE" for the 1st End Pole: (DRAWING A)

- * Insert that 1st Pole into the "Hole" (Tap it firmly in Place) (DRAWING B)
- * If installing GROUND SOCKETS ... Insert and tap the socket firmly in place, (DRAWING C) then insert that pole into the socket.



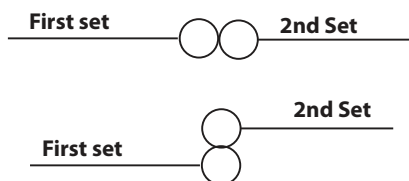
STEP 5: With the 1st pole installed, PULL TIGHT on the 2nd sleeved pole to mark the optimum location on the Radius Line (**see X noted below**) ... create pilot hole, install the pole or socket as per **STEP 4**... keep repeating this process for remaining support poles.



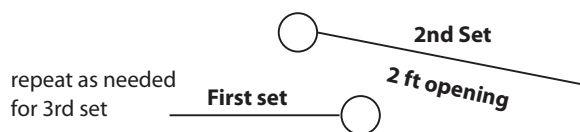
Installing single and multiple sets: Combine, configure and fit 150 and 50 ft. sets

Suggested positions when installing 2 or more fence rolls (L-R)

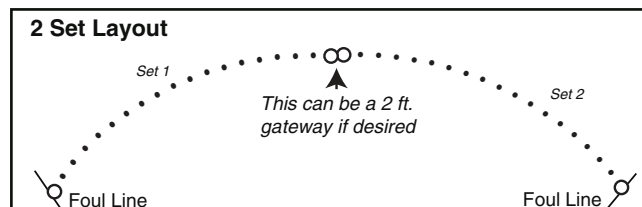
A - Continuous run - set end poles side by side or tight overlap



B - Overlap gate - pass-thru.



Continuous example



Overlap example

