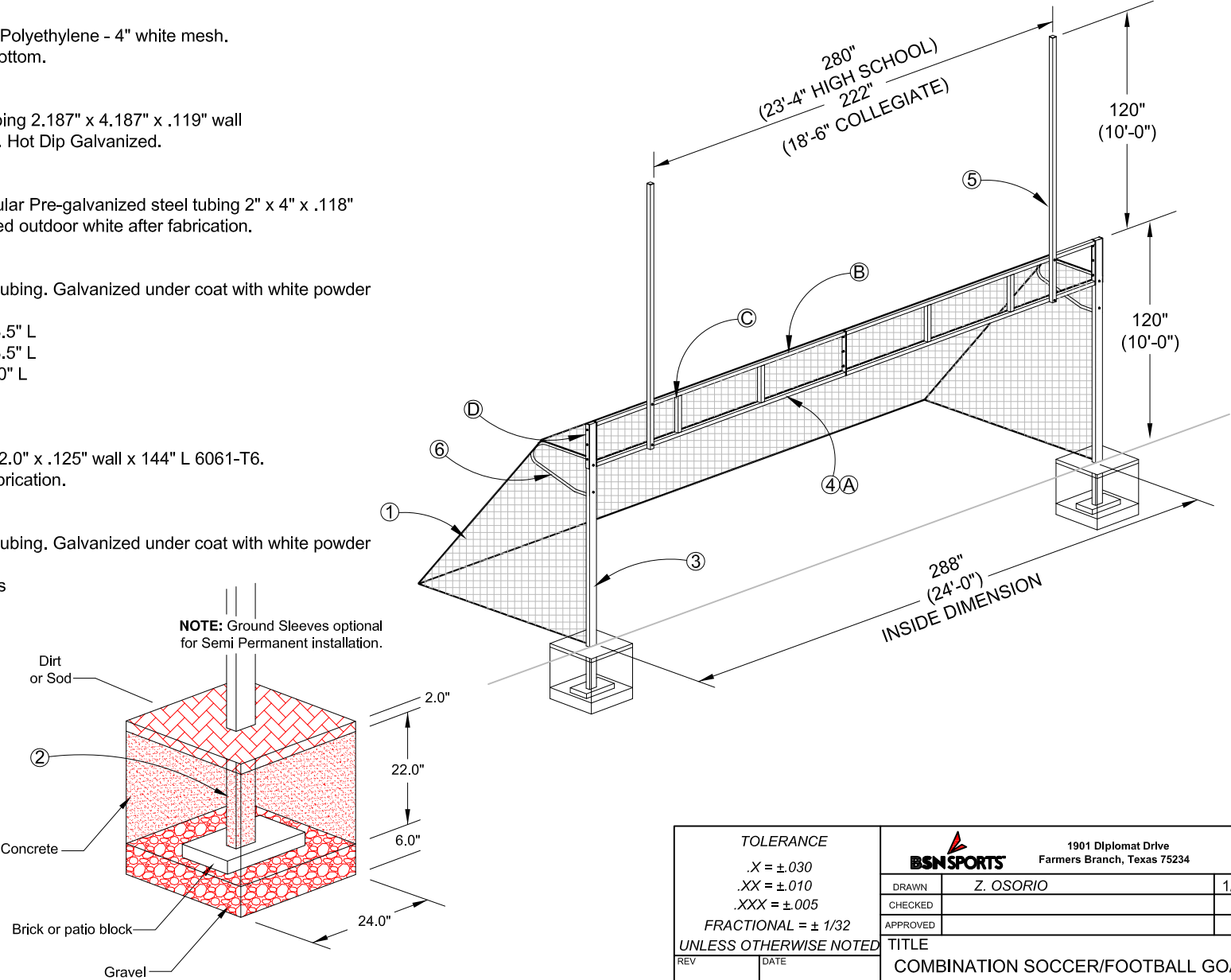


COMBINATION SOCCER / FOOTBALL GOAL SPECIFICATIONS

PRODUCT DESCRIPTION / MATERIALS / FINISHES

- 1) **NET -**
Constructed of 3mm twisted, knotted Polyethylene - 4" white mesh.
8' H x 24' W x 3' D at top x 8.5' D at bottom.
- 2) **GROUND SLEEVES (OPTIONAL) -**
Constructed of prefabricated steel tubing 2.187" x 4.187" x .119" wall thickness x 24" L with removable cap. Hot Dip Galvanized.
- 3) **SOCCER UPRIGHTS -**
Constructed of prefabricated rectangular Pre-galvanized steel tubing 2" x 4" x .118" wall thickness x 144" L. Powder coated outdoor white after fabrication.
- 4) **SOCCER CROSSBAR -**
Constructed with prefabricated steel tubing. Galvanized under coat with white powder top coat after fabrication.
A) 2" x 4" x .078" wall thickness x 143.5" L
B) 2" x 2" x .067" wall thickness x 143.5" L
C) 2" x 2" x .067" wall thickness x 18.0" L
D) 2.0" x .312" steel flat bar
- 5) **FOOTBALL UPRIGHTS -**
Constructed of aluminum tube 2.0" x 2.0" x .125" wall x 144" L 6061-T6. Powder coated outdoor white after fabrication.
- 6) **SOCCER NET BACKSTAY -**
Constructed with prefabricated steel tubing. Galvanized under coat with white powder top coat after fabrication.
E) 1.5" diameter x .078" wall thickness
F) .25" x 2.0" flat stock steel
- 7) **HARDWARE -**
Grade - 5 Zinc Plated



TOLERANCE .X = ±.030 .XX = ±.010 .XXX = ±.005 FRACTIONAL = ± 1/32 UNLESS OTHERWISE NOTED		BSN SPORTS 1901 Diplomat Drive Farmers Branch, Texas 75234	
REV	DATE	DRAWN	Z. OSORIO
REF:		CHECKED	
		APPROVED	
		TITLE COMBINATION SOCCER/FOOTBALL GOAL	
		SCALE: NTS	NUMBER SGFBCOM
			1/15

