

# Best Practices: Repairing rubber around bottom of the weighted base standards

March 2018



## **Note from manual: IMPORTANT SAFETY NOTE:**

The nature and purpose of this equipment requires that the base carry considerable weight. Please exercise reasonable caution when moving the base from one location to another. For best results, stand behind the stanchion near the wheels, grasp the upright and place your foot on the axel between the wheels. Then pull back on the upright until the wheels have touched the floor. Hold the upright firmly and balanced the unit on its wheels. Point the base in the proper direction and push, never pull, the unit toward the chosen location. Exercise additional caution and attention when crossing door jams, floor grates, or other obstructions.

## **CAUTION**

DO NOT ALLOW ANY PERSONS TO APPROACH THE VICINITY OF THE UNIT WHILE IT IS BEING TRANSPORTED. KEEP ALL PERSONS CLEAR OF THE BASE WHILE IT IS TILTED ON ITS SIDE.

## **IMPORTANT SAFETY NOTICE**

Portable multi-purpose game standards can be dangerous if not properly assembled, inspected, maintained and used. Under certain conditions, the assembly fasteners, wheels or other important components may fail causing serious injury to the users. Please read the following guidelines and pass this information along to all involved individuals.

Basically this unit is heavy, and used to support games that put a lot of torque on this equipment, so be on the lookout for anything that looks like any part of this base is wearing.

## **Repair Summary:**

The repair that you are doing today is replacing the protective rubber rail that has worn through; this can cause the metal base to actually hit the floor and has the potential to cause damage. We recommend you work on one at a time.

## **Tools:**

- Fine 110-220 grit sandpaper
- Larger flat screw driver (used to break the old band)
- Rubber Mallet
- Smaller flat screwdriver (used to tighten the band clamp)
- 4x4 inch block of wood
- Tin Snips, Metal Shears (Something to trim the metal band during reassembly)
- Trash bag to throw away all the old bands and rubbers
- Clean rags, mild surface cleaner

Repair parts: You will need one set of each below to repair one game standard.

- Metal Band, and tightening mechanism, JayPro Part Number, **PR0012**
- Replacement Rubber, JayPro Part Number, **RR486 (for a 24" diameter base)**
- Replacement Rubber, JayPro Part Number, **RR487 (for a 30" diameter base)**

**It is normal for the rubber to wear, all users should inspect the bases monthly and replace the protective rubber if they see wear or observe the metal starting to show!**

### **Rework Procedure:**

1. Find a suitable work area, away from active play areas, active work areas, and students.
2. While determining this work area, protect the floor from potential damage or work on a concrete or in a designated work space.
3. The base will be easiest to work on if the metal pole is attached. This will give you an easy way to move the base into a work location, and an easy and safe way to tilt and secure it. Please make sure the pole is securely attached to the base. (test each base before you work on it it to make sure)



4. Move the base into a position as shown in this picture. Please note the wheels are supported off the ground, the rear part of the base is off the ground and the front of the base is still hitting the ground.



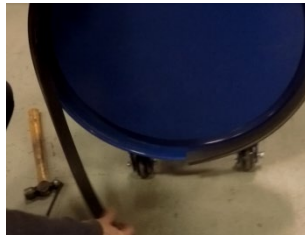
5. Using the larger screw driver, push it by hand between the rubber and metal band as shown.

6. Force, twist and pry the band loose as shown. Use rubber mallet if required.



7. Once the metal band breaks, remove it completely and throw it away.

8. Remove the old rubber as shown.



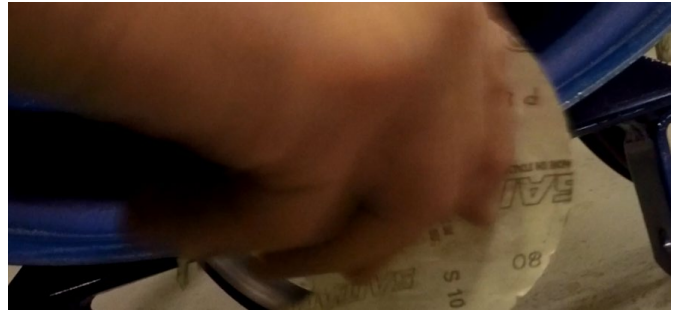
9. Keep the base in this position while the rest of the work is performed.



10. Run your hand along the entire inner surface and lip, do you feel any roughness?  
Please let us know if you do.

If this was super smooth like a piece of glass, **you do not need to sand**. If you felt any roughness please smooth it out. The most important location to be smooth is between the two wheels.  
This can be done using 110-220 grit sandpaper.

Most Important: Make sure there are no rough spots.



This section of the base will fit into the rubber channel and if there are rough spots it may cause premature wear.



You can see where there was a little burr which was removed

(this burr is on the footprint or where it would touch floor)



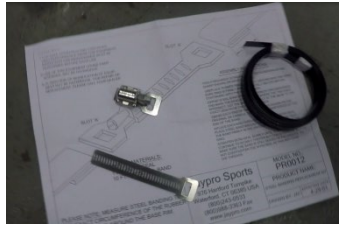
Look for any sharp edge on the corner and remove it (white color)



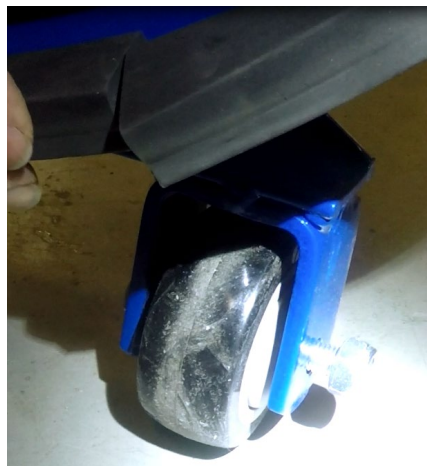
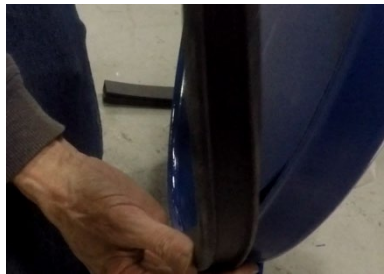
It is most important to make sure between that the two wheels, the inside edge and lip of the base is very smooth.

**The area between the wheels is most important because, this is the area that gets pinched when the base is put on its wheels. This is the number one place the rubber will show wear.**

11. Once you have lightly sanded all around the base (as shown above) and made sure the areas between the two wheels are very smooth, we can begin attaching the new rubber and band.



12. Attach the new rubber to the weighted game base. When you put the new rubber on you will place the seam near the left wheel (from the back). If you recall when you took the old rubber off the seam was in the middle of the back wheels. Put the rubber on so that the metal base fills the internal rubber channel correctly. Please make sure the rubber is secure and fully seated along the entire bottom of the base. Once you think it is on, double check it again to make sure.



Once installed, one end of the new rubber should touch the other end, you can gently stretch the rubber as you wrap it around the base. You can have a maximum  $\frac{1}{4}$ " gap (end to end) after it is installed on the base. It is best if each end is touching.

13. Loop one end of the band as shown.



14. Attach one end of the attaching mechanism as shown on the instructions.



15. Figure out where the second bend should be. Don't worry if you do not get this length correct the first time, as long as you do not cut it you are still OK.



16. Attach the screw clamp as shown. Please make sure that the writing is facing up on the band clamp because the direction this pulls is important. Trim the band to the correct length once you are sure of the amount of wire needed. That will be the size you will need for the rest of the bases you are repairing.



17. Just as the rubber seam is in a new location, the band will also be in a new place. The band will be located in this approximate location.



Position the clamp so you have room for the screw driver to tighten the band clamp.



We put the clamp on from the left side (bottom view) and it gave us enough room for the screwdriver to tighten the clamp from the front without the wheels interfering.



18. Attach the other side of the clamp to the second bend. And tighten.



19. Tighten until band is secure.



20. Once the band is tight, visually check to make sure the rubber is installed correctly. Test the weighted game standard by tilting the base a few times. If everything looks good you have succeeded.

21. Clean off base with clean rags and a mild cleaner.

22. Please advise the customer to check for wear monthly.

**List of important steps:**

1. Found a safe working area.
2. Removed old rubber rail, and inspected inside edge and bottom "footprint) of the naked base for roughness, or burrs along key areas. (noted above)
3. Any roughness/burrs were removed around areas noted above.
4. The key area "pivot point" between the wheels were inspected for rough surfaces and reworked if required.
5. Replaced the rubber rail off set so that the seam is not on the pivot point.
6. Replaced the band so that the locking mechanism is not on the pivot point and so that it is easy to put on.
7. Inspected to make sure all the operations were done correctly.
8. Disposed of old parts in a safe manner.
9. Advised customer to check the bottom for wear monthly.