



SCOREBOARD SPECIFICATIONS FOR



MODEL VSBX-744

www.varsityscoreboards.com

VARSITY SCOREBOARDS
106 Max Hurt Drive
Murray, KY 42071
Phone: 1-866-575-0577 Fax: 270-759-0004



SCOREBOARD SPECIFICATIONS

MODEL VSBX-744

Lead your organization with this Football scoreboard! Large 20" & 24" high super-bright 100,000-hour rated LED numerals are the largest with the widest viewing angle in the industry and are visible over 300 feet. The 22-gauge galvanized steel cabinet with powder-coat finish means your scoreboard is the most durable on the market and will look brand new for many years! Scoreboard package includes: operator's keyboard, digit protective shields, junction box cover (cable models only), mounting rails and a complete operation, installation, service manual and warranty details are included on the CD shipped with each scoreboard.

OVERALL DIMENSIONS

24' wide x 8' tall x 8.0" depth

WEIGHT

Hanging weight: 1105 lbs
Shipping weight: 1495 lbs.

CONSTRUCTION

22-gauge galvanized steel cabinet with powder coat finish for strength, durability, and lasting appearance

POWER REQUIREMENTS

Scoreboard:

(1) 20-amp, 120-volt, 60-hertz, grounded AC circuit connected to an ON/OFF switch and/or circuit breaker

Controller:

Standard LCD controller powered by 12V DC Adapter or an optional internal battery.

SCORING INFORMATION DISPLAYED

HOME and GUEST: 2 - digit displays, 0-99

TO GO: 2 - digit display, 0-99

BALL ON: 2 - digit display, 0-99

DOWN and QUARTER: 1 - digit display, 0-9

CLOCK: 4 - digit displays, counts up or down, 99:59-00:00 or 00:00-99:59

POSSESSION INDICATORS: 2 - football displays

CAPTIONS

HOME and GUEST: 12.0" tall

TO GO: 10.0" tall

DOWN: 10.0" tall

BALL ON: 10.0" tall

QTR: 12.0" tall

CLOCK COLON: 5.0" tall

Polymeric Calendared Vinyl Lettering

CLOCK Displays

24.0" tall, 160° visibility, red, 100,000 hour-rated, outdoor Super-Bright LED (light emitting diode) displays
Impact Resistant Acrylic Protective Digit Shields and Adjustable LED Intensity Included

HOME, GUEST, DOWN, TO GO, BALL ON, QTR and CLOCK Displays

20.0" tall, 160° visibility, red, 100,000 hour-rated, outdoor Super-Bright LED (light emitting diode) displays
Impact Resistant Acrylic Protective Digit Shields and Adjustable LED Intensity Included

POSSESSION Displays

6.5" tall indicators, 160° visibility, red, 100,000 hour-rated, outdoor Super-Bright LED (light emitting diode) displays

Impact Resistant Acrylic Protective Digit Shields and Adjustable LED Intensity Included

APPROVALS

ETL/CSA listed

Scoreboard: Meets all FCC Class A requirements

2.4GHz wireless transmitter: FCC Part 15 certified

2.4GHz wireless receiver: Meets all FCC Part 15 requirements

WARRANTY

This product is warranted against defects in materials and workmanship for the period specified in the warranty from the date of invoice. The complete warranty details are included in the Instruction Manual shipped with each unit.

SERVICE

Technical Support is available 24 hours a day, 7 days a week @ 1-800-411-3136

INSTALLATION

This model may be installed between (3) 8" OD steel, schedule 40 poles; or (3) 8" I-beams, minimum. Hole depth /diameter as well as pole/concrete specifications must be based on customer's local building codes, soil conditions, and wind loads. Mounting rails are supplied.

Support structure and mounting hardware supplied by installer/others

SCOREBOARD CONTROLLER

Dimensions: 2.5" height x 14.0" width x 7.0" depth. **Weight:** 2.10 lbs.

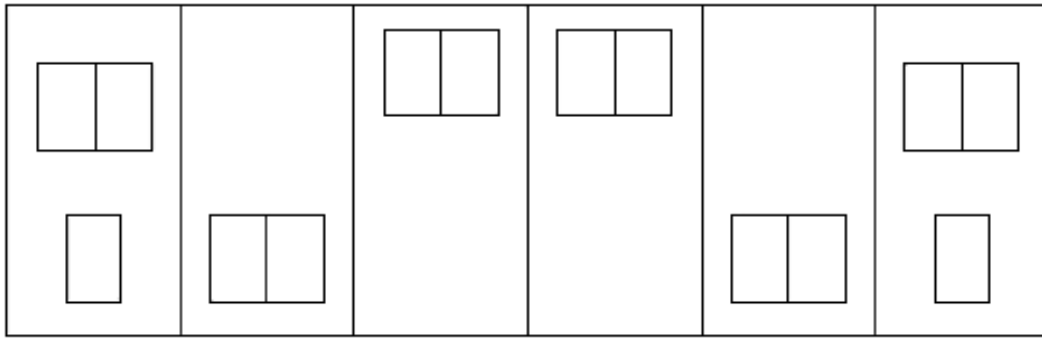
The keyboard controller available with this scoreboard is microprocessor-controlled, molded of high-impact ABS plastic, has a tactile membrane keypad. Options include 2.4GHz wireless control and external battery pack with automatic battery charger.

Cable-Controlled System (standard) Includes:

- (1) Keyboard controller
- (3) FOOTBALL keypad inserts
- (1) Junction box covers with receptacle (to be installed at scorekeeper's location)
- (1) 20-ft. signal cable (used to connect the keyboard to the junction box receptacle)
- (1) Project-specific length of 4 wire twisted pair, shielded control cable

2.4GHz Wireless System (optional) Includes:

- (1) Universal LCD keyboard controller (internal battery pack with built-in charger)
- (3) FOOTBALL keypad inserts
- (1) 12-volt DC wall transformer
- (1) 2.4GHz transmitter (connects to keyboard controller via supplied interface cable)
- (1) 2.4GHz receiver (connects to the scoreboard, eliminating control cable and junction box installation)



SCOREBOARD DIMENSIONS:
24' wide X 8' tall X 8" depth