





MAGNETIC SUPER BASE

LITTLE LEAGUE® APPROVED

REMEMBER!! IT IS VERY IMPORTANT TO KEEP THE BASE AREAS LEVEL AT ALL TIMES

 WARNING 	<i>Be advised that sliding into a baseball/softball base represents a clear and present danger. Injury may occur. All players should be informed of the risks inherent in this sports activity. Bases designed to reduce sliding injuries are not a substitute for using proper sliding techniques.</i>
--	---

MAGNETIC SUPER BASE ASSEMBLY AND USE

STEP 1) Attach Square Post (**item A**) to bottom of Magnetic Fixture (**item C**) using the four Socket Head Screws and Locknuts (**items D,B**) as shown in diagram.

STEP 2) Now select proper size Shear Plate (**items J,K,L**) using the Selection Chart below.

The purpose of the magnetic fixture is to allow the base to absorb the impact of a sliding player by moving. This is accomplished when the base is hit with a lateral force. The shear force is controlled by the size of the galvanized steel plate that is fixed to the bottom of the base (see diagram).

ITEM	DESCRIPTION	SHEAR STRENGTH
J	4" X 2" Shear Plate - YOUTH	123 lbs of applied force
K	4" X 4" Shear Plate - TEEN	173 lbs of applied force
L	4" X 6" Shear Plate - ADULT	266 lbs of applied force

STEP 3) Attach the proper Shear Plate for your use, using Flat Head Screws and Wrench (**items F,E**) as shown in diagram.

STEP 4) Insert the Magnetic Fixture Assembly (**item C**) into your previously installed ground anchors (sold sperately) and verify it is sitting flat on the ground so it will not interfere with the sliding player.

STEP 5) Seat the Base (**item G**) over the Magnetic Fixture.

- * The Magnetic Fixture must always sit flat on the ground so it will not interfere with the sliding player.
- * Do not leave Magnetic Fixture fixed to the Base when not in use. This is extremely important. Failure to follow this procedure will void warranty.
- * Do not pull the Base and Magnetic Fixture directly apart. The Base must be sheared off the fixture. Pulling directly away from the strong magnetic surface could damage the Magnetic Fixture and void warranty.
- * In order to shear the Base from the Magnetic fixture, install a 2" inside diameter x 12" length of pipe onto a fence post or bleacher upright. Drop the Super Base square post into the 2" pipe and grasp the base and slide the base off the magnetic fixture.
- * When the Base is disengaged from the Magnetic fixture it must be brushed off (by hand or whisk) to remove loose sand or gravel before replacing the Base into position. If this is not properly administered, the magnetic contact can be disrupted.
- * When using the Super Base and Magnetic Fixture for teaching "How to slide properly" the correct shear plate or the next smaller shear plate should always be used.
- * Manufacturer strongly recommends that you use the Macgregor® Magnetic Super Base at all three base locations on the infield. By using all three, you will present consistency of product to the player and also to the umpires.



MAGNETIC SUPER BASE

LITTLE LEAGUE® APPROVED

WARNING

Be advised that sliding into a baseball/softball base represents a clear and present danger. Injury may occur. All players should be informed of the risks inherent in this sports activity. Bases designed to reduce sliding injuries are not a substitute for using proper sliding techniques.

MAGNETIC SUPER BASE ASSEMBLY & PARTS LIST

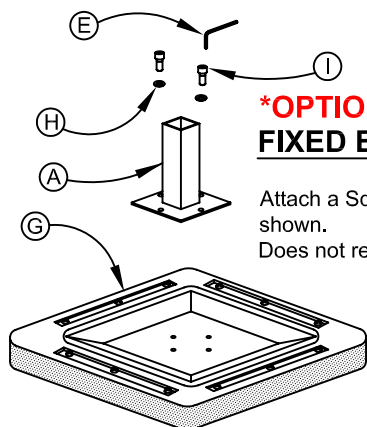
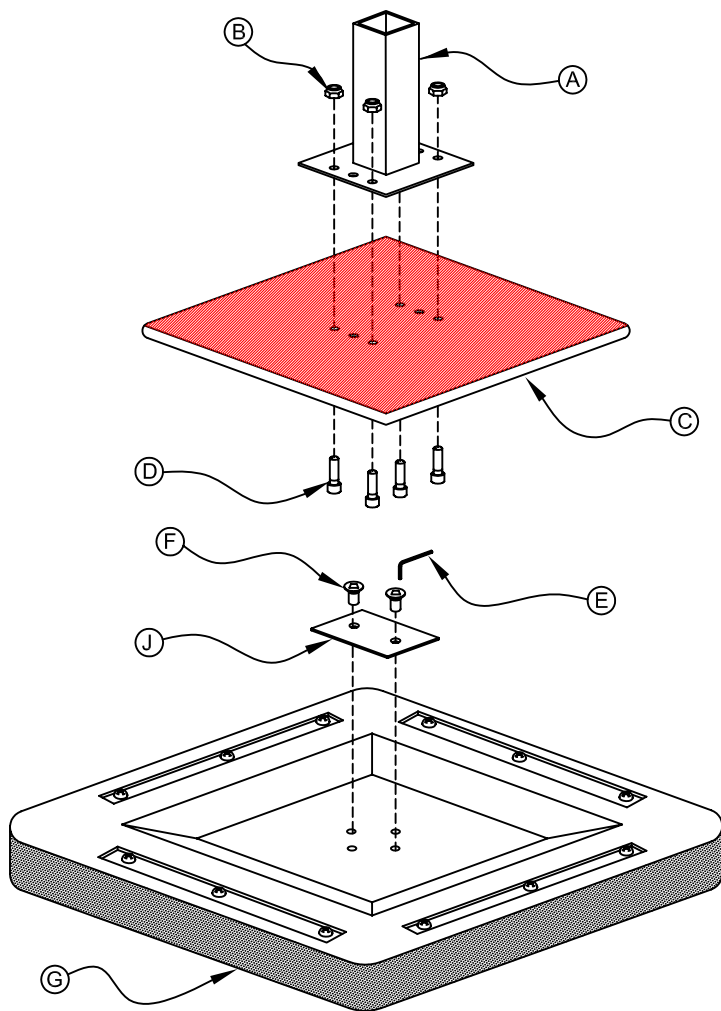
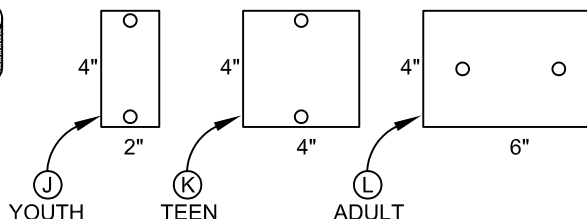
IMPORTANT:

Attach the proper Shear Plate (Items J, K, L). See Selection Chart.

ITEM	DESCRIPTION	QTY
A	SQUARE POST	1
B	LOCKNUT 1/4"	4
C	MAGNETIC FIXTURE	1
D	SOCKET HEAD CAP SCREW 1/4" X 7/8"	4
E	HEX WRENCH	2
F	FLAT HEAD SCREW 1/4" X 1/2"	2
G	BASE	1
H	1/4" WASHER (FIXED BASE ASSEMBLY)	2
I	SOCKET HEAD CAP SCREW 1/4" X 5/8" (FIXED BASE ASSEMBLY)	2
J	SHEAR PLATE 4" X 2" - YOUTH	1
K	SHEAR PLATE 4" X 4" - TEEN	1
L	SHEAR PLATE 4" X 6" - ADULT	1

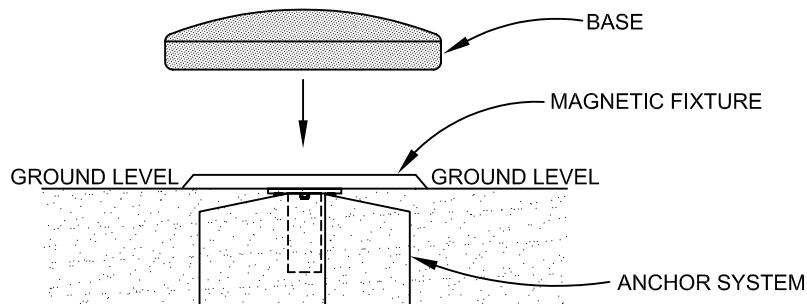
IMPORTANT :

CHOOSE PROPER SHEAR PLATE. (SEE SELECTION CHART)



OPTIONAL **FIXED BASE ASSEMBLY**

Attach a Square Post to a Base Assembly as shown.
Does not require the Magnetic Base Fixture.



NOTE: MAGNETIC FIXTURE MUST BE FLUSH WITH GROUND LEVEL.