
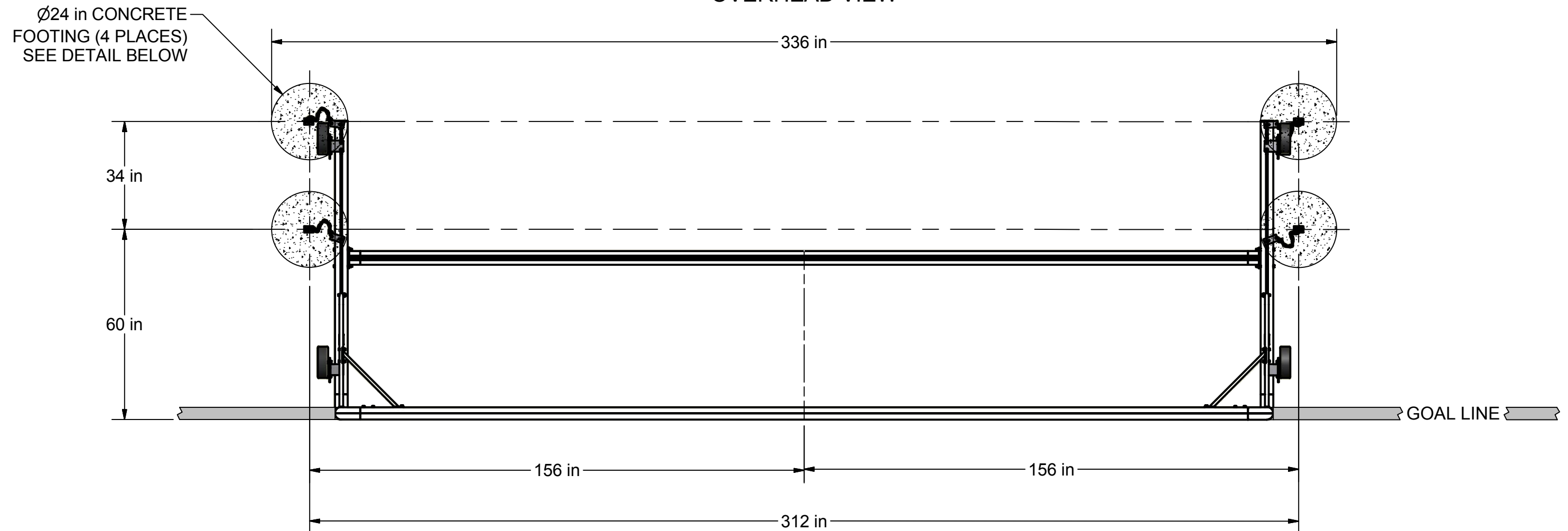


#### FEATURES:

- 1) ALUMINUM GOAL FRAME AND BACKSTAYS
- 2) FINISH: WHITE POWDER COAT
- 3) INCLUDED:
  - SEMIPERMANENT GROUND ANCHORS
  - 3 mm, WHITE NET
  - KWIK LOCK® NET CLIPS
  - 4 - NO-FLAT TIRES
  - 6 - SADDLE ANCHOR BAGS
- 4) ASSEMBLED GOAL WEIGHT: 275 LBS.
- 5) EXCEEDS:
  - NCAA SPECIFICATIONS
  - NFSHSA SPECIFICATIONS
  - ASTM F2950-14 STANDARDS
- 6) MODIFIED BACK BOTTOM BAR TO FIT CLEANLY IN FRONT OF FOOTBALL UPRIGHTS ON A SHARED SOCCER/FOOTBALL ENDLINE

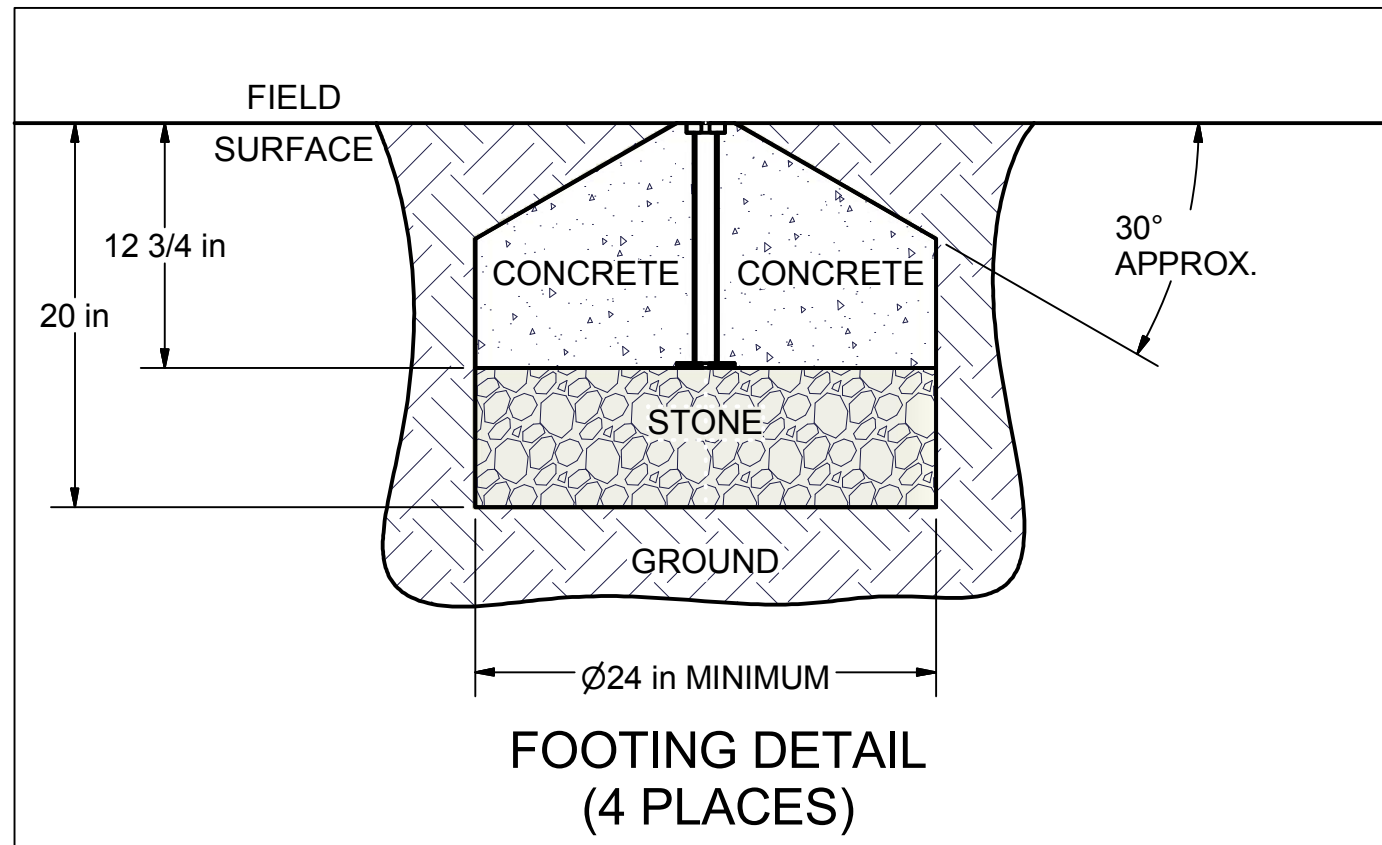
 <p>THIRD ANGLE PROJECTION</p>	 <p>140 Pacific Drive Quakertown, Pa. 18951</p>	
<p>DIMENSIONS ARE IN INCHES UNLESS OTHERWISE SPECIFIED</p>	<p>Approved By:</p> <p>Date:</p>	<p>Part #:</p> <p><b>2B3906</b></p>
<p>This item is the <b>exclusive</b> property of <b>KWIK GOAL LTD.</b> Reproduction or duplication <b>without</b> the express written consent of <b>KWIK GOAL LTD.</b> is <b>strictly forbidden.</b></p>	<p>Drawn By: CSpeck</p>	<p>Desc:</p> <p>8' X 24' FUSION-120 GOAL</p>
	<p>Date: 9/1/2006</p>	
	<p>Sheet: 1 of 4</p>	
	<p>Revision #: 6</p>	
	<p>Cad File: 2B3906.idw</p>	

## OVERHEAD VIEW

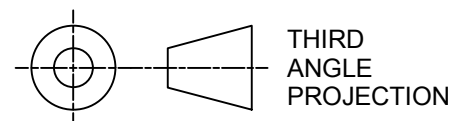
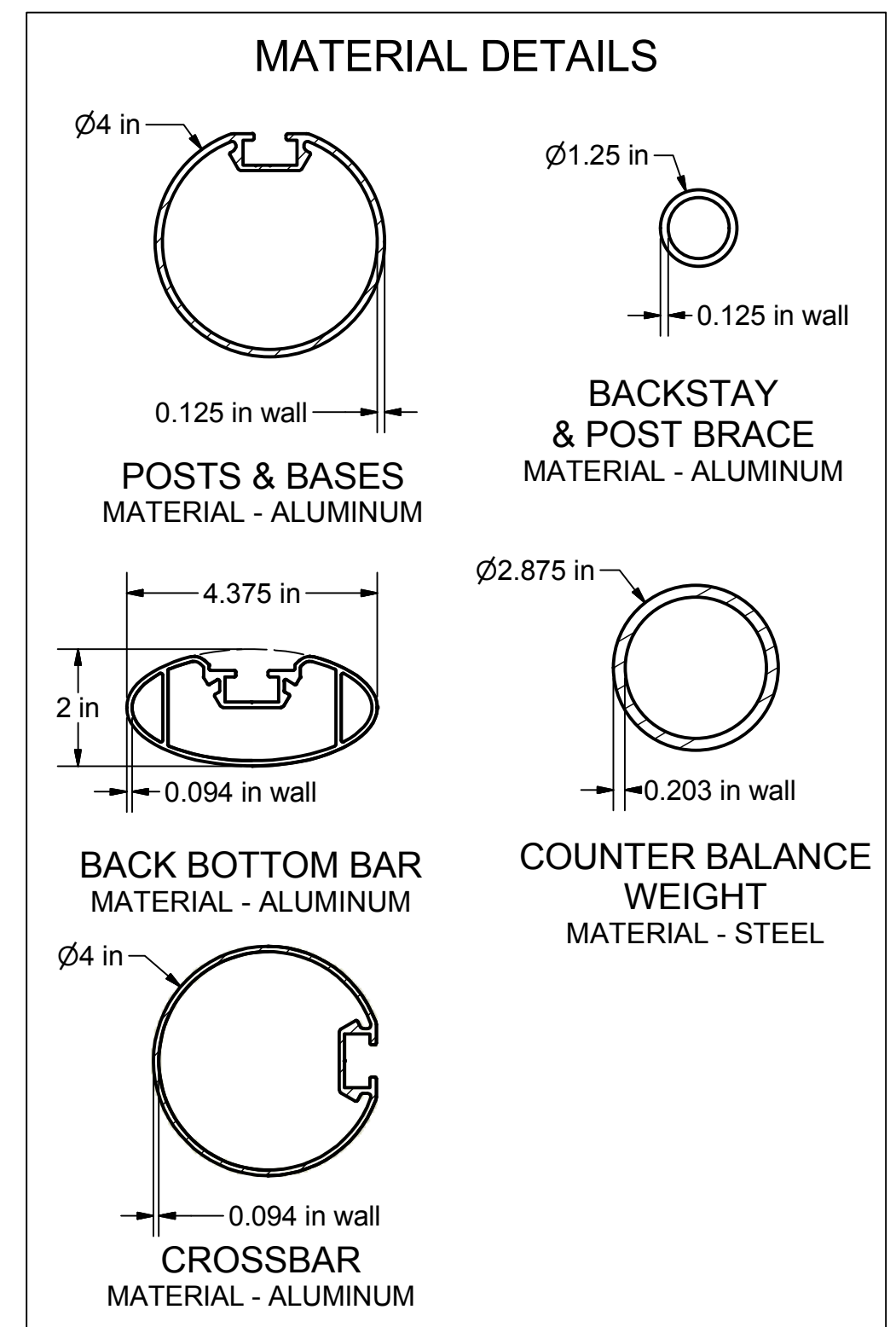
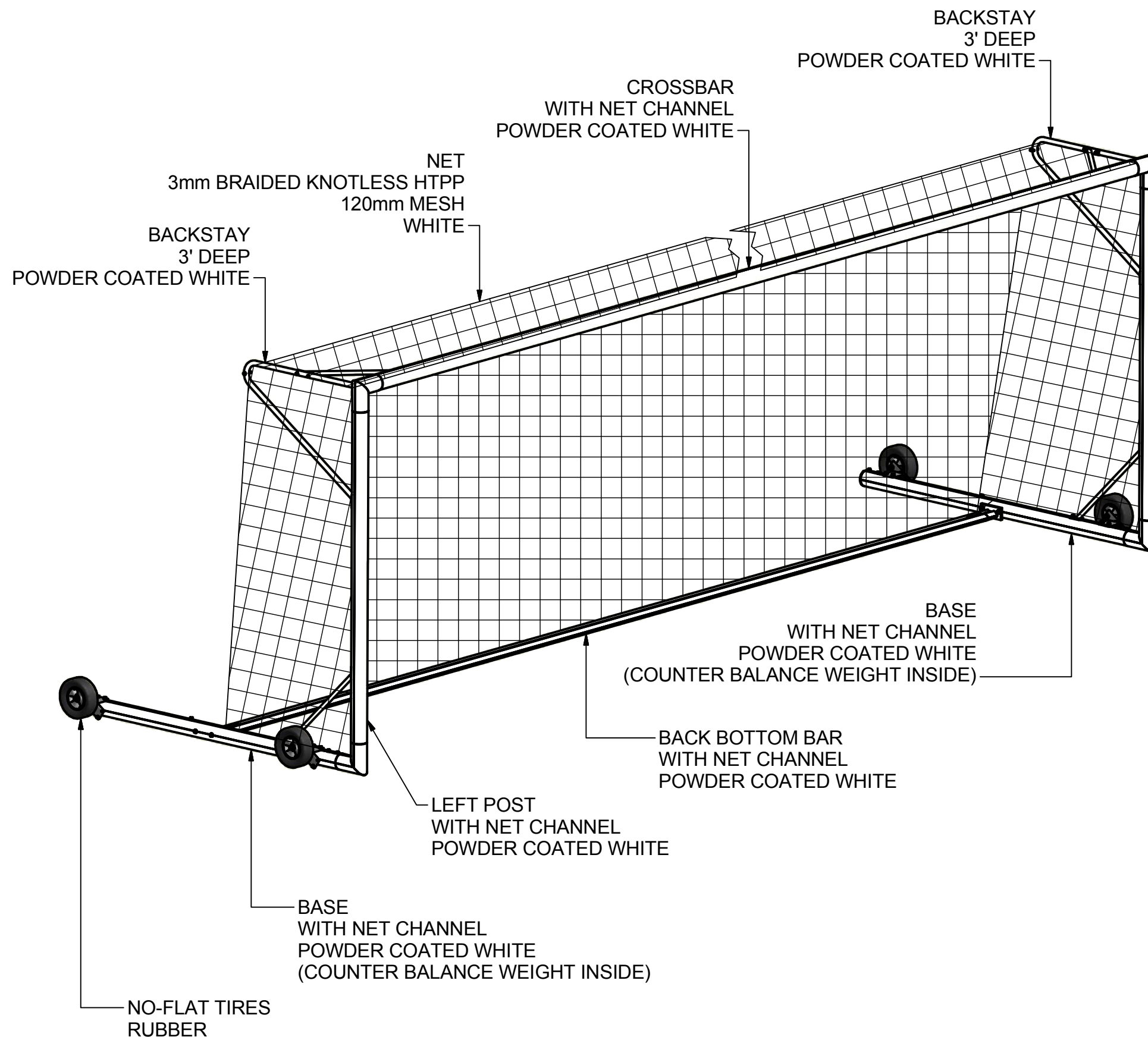


## NOTES:

- 1) DIMENSIONS ARE FOR PLANNING PURPOSES. INSTALLATION MUST BE IN ACCORDANCE WITH INSTALLATION INSTRUCTIONS.
- 2) CUSTOMER SUPPLIED MATERIALS FOR GOAL INSTALLATION
  - 0.5 cubic yard - CONCRETE
  - 0.3 cubic yard - CLEAN STONE (1/4" - 3/4")
 ABOVE AMOUNTS ARE PER GOAL INSTALLATION



 THIRD ANGLE PROJECTION	 140 Pacific Drive Quakertown, Pa. 18951	
DIMENSIONS ARE IN INCHES UNLESS OTHERWISE SPECIFIED	Approved By: Date:	Part #:  <b>2B3906</b>
This item is the <b>exclusive</b> property of <b>KWIK GOAL LTD.</b> Reproduction or duplication <b>without</b> the express written consent of <b>KWIK GOAL LTD.</b> is <b>strictly forbidden.</b>	Drawn By: CSpeck	
	Date: 9/1/2006	
	Sheet: 2 of 4	
	Revision #: 6	Desc:  8' X 24' FUSION-120 GOAL
	Cad File: 2B3906.idw	



THIRD  
ANGLE  
PROJECTION



140 Pacific Drive  
Quakertown,  
Pa. 18951

DIMENSIONS ARE IN INCHES  
UNLESS OTHERWISE SPECIFIED

This item is the **exclusive**  
property of **KWIK GOAL LTD.**  
Reproduction or duplication  
**without** the express written  
consent of **KWIK GOAL LTD.**  
is **strictly forbidden.**

Approved By:

Date:

Drawn By: CSpeck

Date: 9/1/2006

Sheet: 3 of 4

Revision #: 6

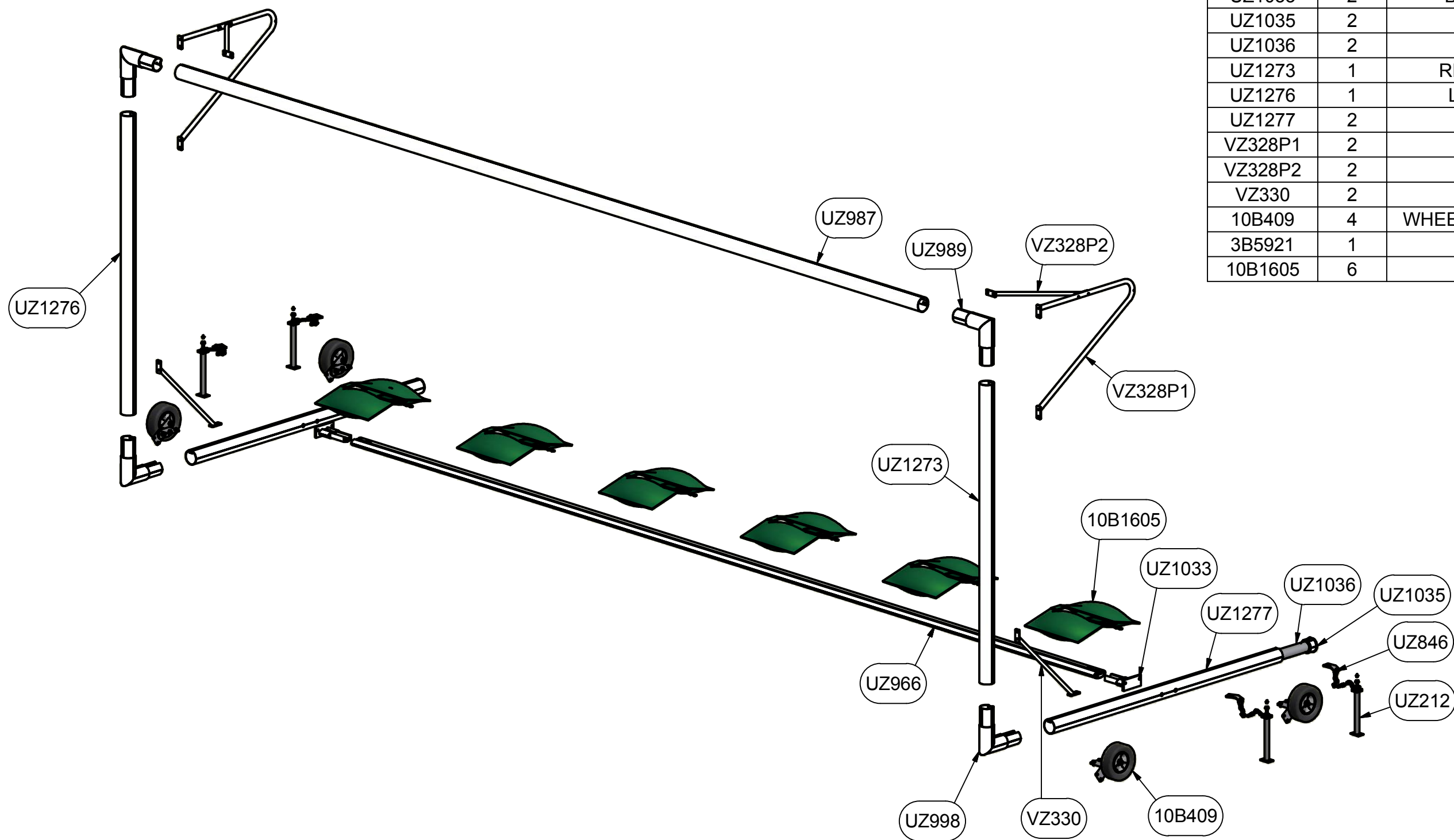
Cad File: 2B3906.idw

Part #:

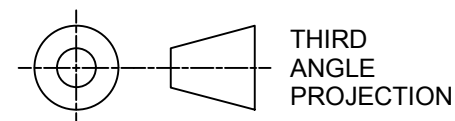
2B3906

Desc:

8' X 24' FUSION-120 GOAL



Parts List		
Part #	Qty	Description
UZ212	4	GROUND ANCHOR ASSEMBLY
UZ846	4	CHAIN ASSY, GROUND ANCHOR
UZ966	1	BACK BOTTOM BAR, 2B3406
UZ987	1	CROSSBAR, 4 RND V-TRACK2
UZ989	2	CROSSBAR CORNER, 4 RND V-TRACK2
UZ998	2	POST CORNER, 4 RND V-TRACK2
UZ1033	2	BACK BOTTOM BAR BRACKET
UZ1035	2	SLEEVE, BASE CAP
UZ1036	2	WEIGHT BAR, 2B3906
UZ1273	1	RIGHT POST, 4" RND V-TRACK2
UZ1276	1	LEFT POST, 4 RND V-TRACK2
UZ1277	2	BASE, 4 RND V-TRACK2
VZ328P1	2	BACKSTAY
VZ328P2	2	BACKSTAY BRACE
VZ330	2	POST BRACE
10B409	4	WHEEL KIT, EURO MATCH AND FUSION
3B5921	1	NET 5' DEPTH, 3mm WHITE
10B1605	6	SADDLE ANCHOR BAG



THIRD  
ANGLE  
PROJECTION

DIMENSIONS ARE IN INCHES  
UNLESS OTHERWISE SPECIFIED

This item is the **exclusive**  
property of **KWIK GOAL LTD.**  
Reproduction or duplication  
**without** the express written  
consent of **KWIK GOAL LTD.**  
is **strictly forbidden.**



**KWIKGOAL**

140 Pacific Drive  
Quakertown,  
Pa. 18951

Approved By:

Date:

Drawn By: CSpeck

Date: 9/1/2006

Sheet: 4 of 4

Revision #: 6

Cad File: 2B3906.idw

Part #:

**2B3906**

Desc:

8' X 24' FUSION-120 GOAL