



www.gillathletics.com  
800-637-3090

## G4 POLE VAULT STANDARD INSTALLATION INSTRUCTIONS

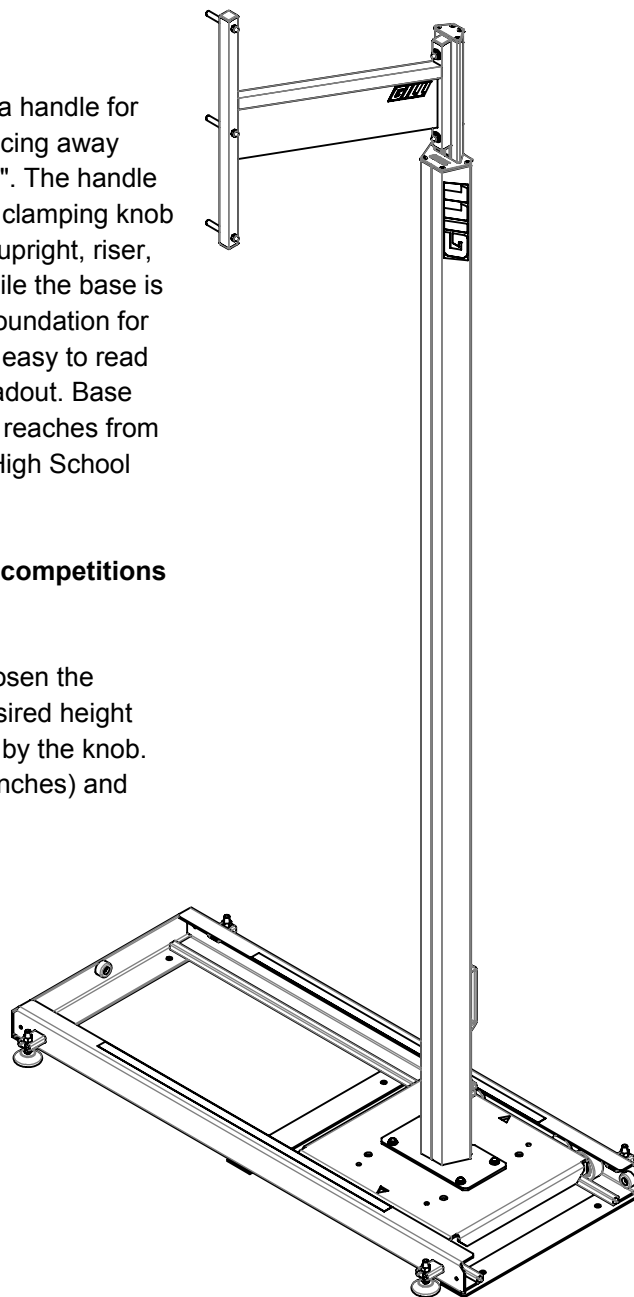
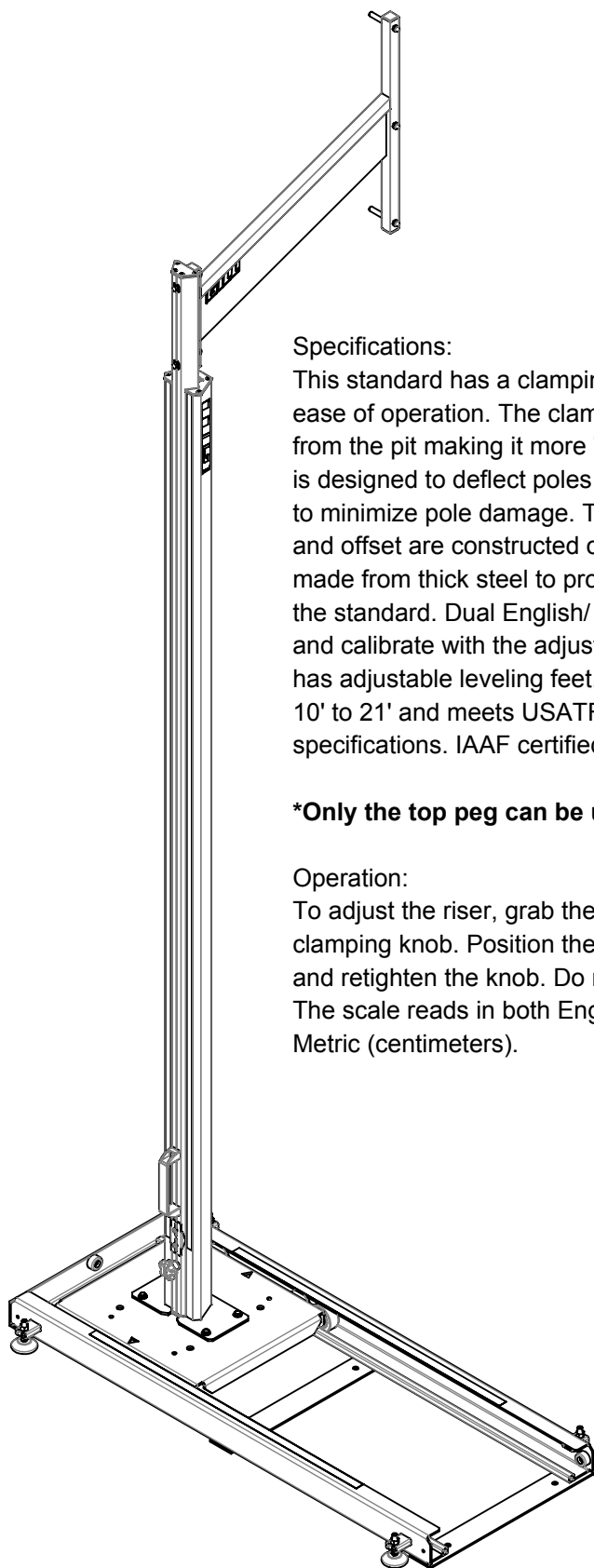
### Specifications:

This standard has a clamping system and a handle for ease of operation. The clamping knob is facing away from the pit making it more "official friendly". The handle is designed to deflect poles away from the clamping knob to minimize pole damage. This standard's upright, riser, and offset are constructed of aluminum while the base is made from thick steel to provide a sturdy foundation for the standard. Dual English/ Metric scale is easy to read and calibrate with the adjustable height readout. Base has adjustable leveling feet. This standard reaches from 10' to 21' and meets USATF, NCAA, and High School specifications. IAAF certified\*.

### **\*Only the top peg can be used for IAAF competitions**

### Operation:

To adjust the riser, grab the handle and loosen the clamping knob. Position the riser at the desired height and retighten the knob. Do not lift the riser by the knob. The scale reads in both English (feet and inches) and Metric (centimeters).

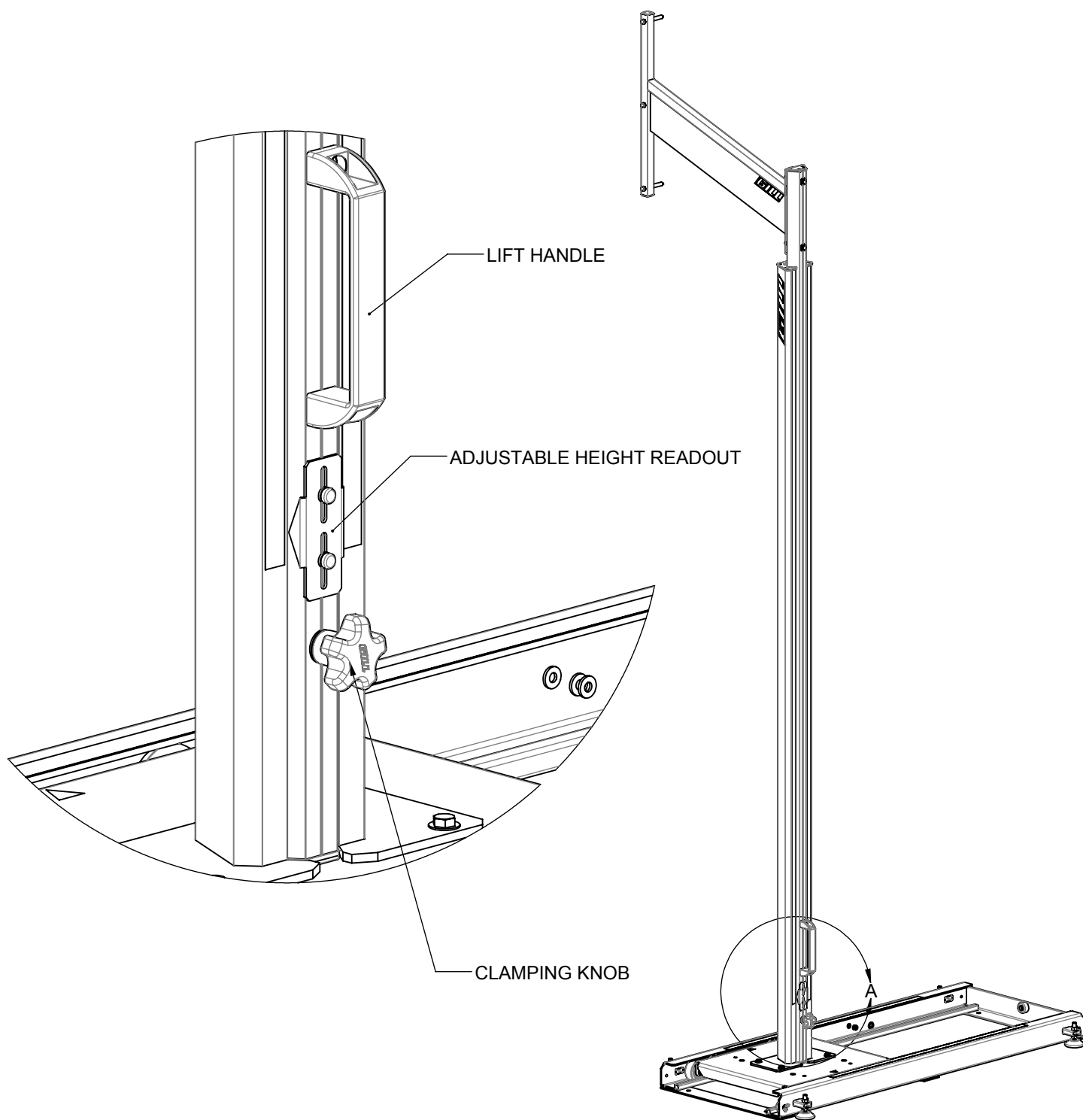


**⚠ WARNING:** This product can expose you to Titanium Dioxide, which is known to the State of California to cause cancer. For more information go to [www.p65warnings.ca.gov](http://www.p65warnings.ca.gov).



www.gillathletics.com  
800-637-3090

## G4 POLE VAULT STANDARD INSTALLATION INSTRUCTIONS

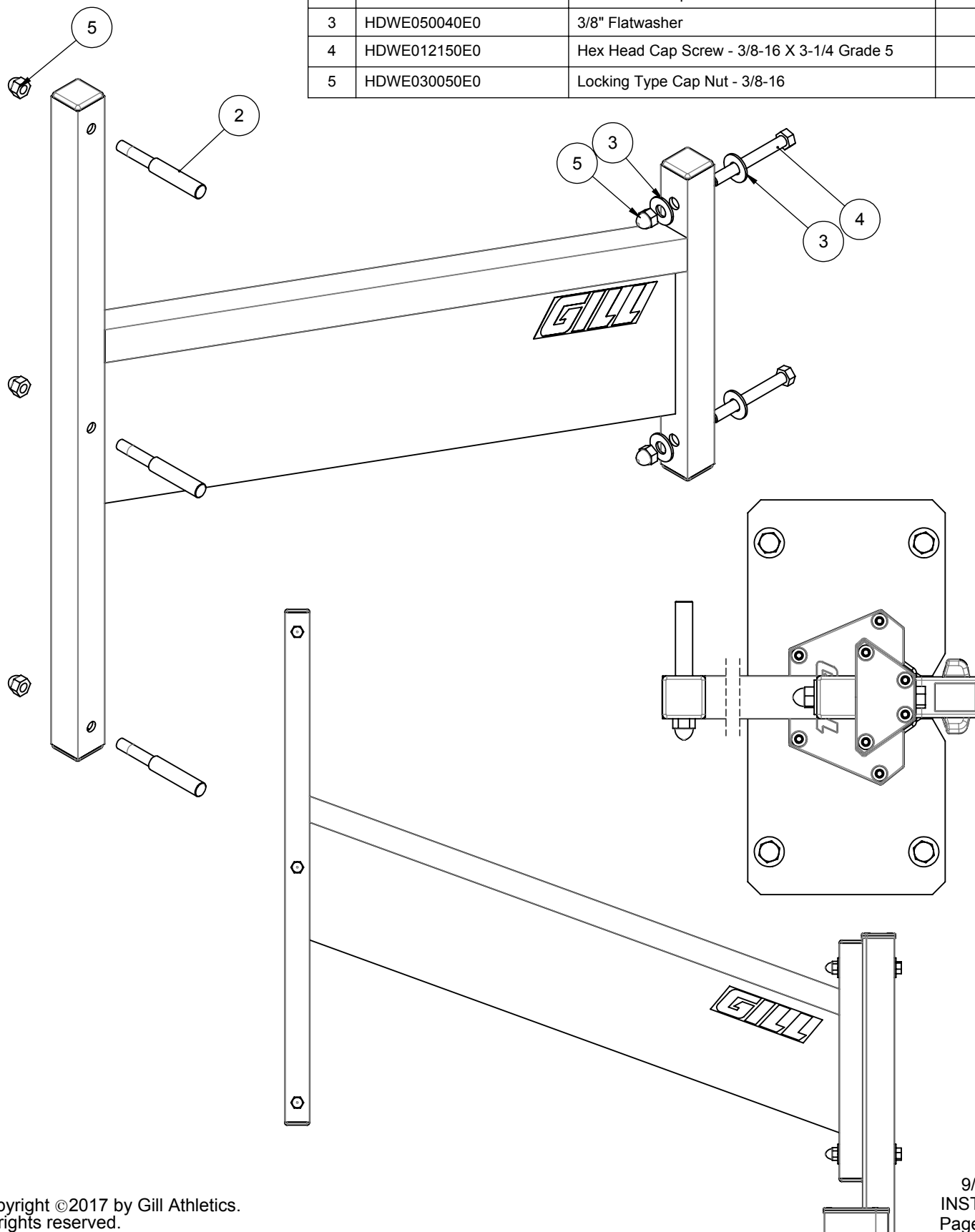




www.gillathletics.com  
800-637-3090

## G4 POLE VAULT STANDARD INSTALLATION INSTRUCTIONS

#	Part #	Description	QTY.
1	77231	Offset weldment	1
2	71430	55mm bar rest pin	3
3	HDWE050040E0	3/8" Flatwasher	4
4	HDWE012150E0	Hex Head Cap Screw - 3/8-16 X 3-1/4 Grade 5	2
5	HDWE030050E0	Locking Type Cap Nut - 3/8-16	5

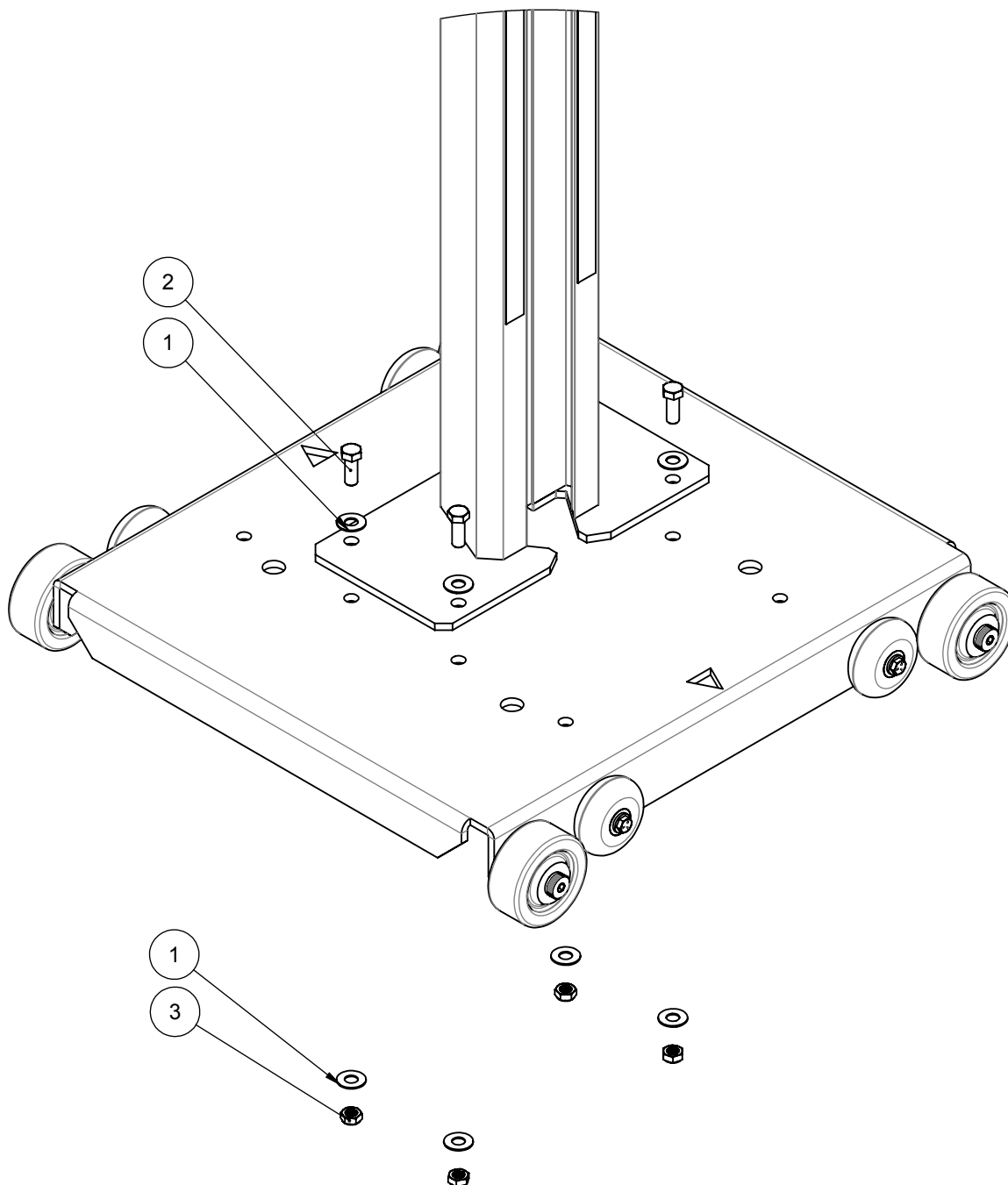




www.gillathletics.com  
800-637-3090

## G4 POLE VAULT STANDARD INSTALLATION INSTRUCTIONS

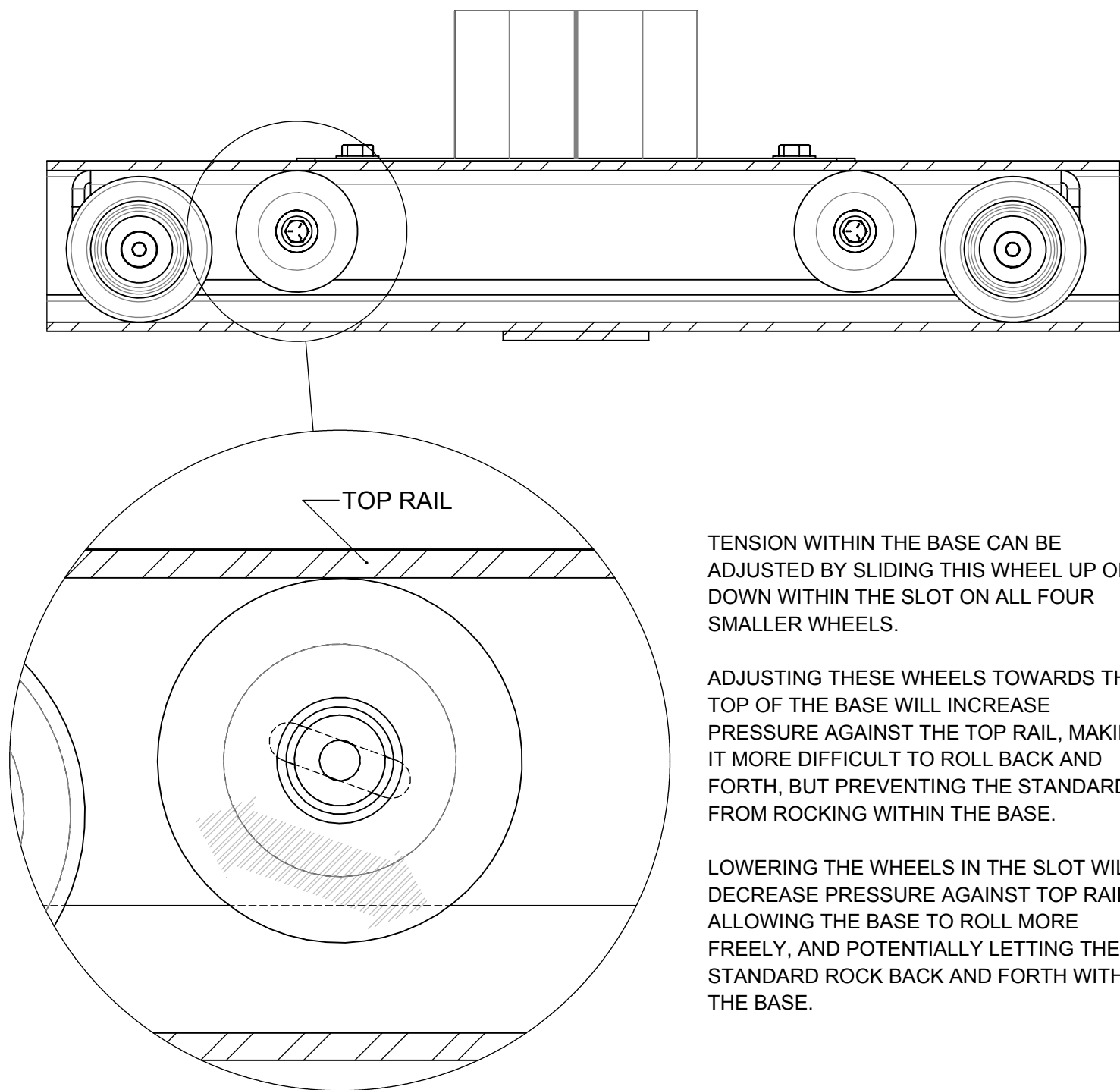
#	Part #	Description	QTY.
1	M2534	Washer, Flat, 3/8" SAE, .875" OD, .4" ID	8
2	M2787	3/18"-16 x 1" Hex Head Bolt; SS	4
3	M1235	3/8"-16 thin nylock hex nut	4





www.gillathletics.com  
800-637-3090

## G4 POLE VAULT STANDARD INSTALLATION INSTRUCTIONS



TENSION WITHIN THE BASE CAN BE ADJUSTED BY SLIDING THIS WHEEL UP OR DOWN WITHIN THE SLOT ON ALL FOUR SMALLER WHEELS.

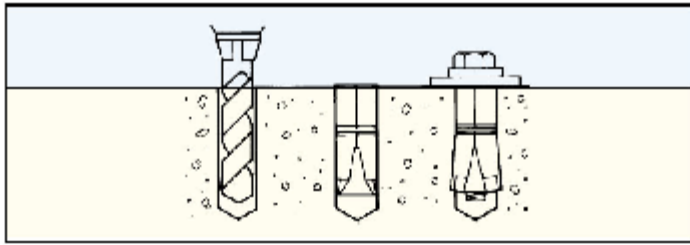
ADJUSTING THESE WHEELS TOWARDS THE TOP OF THE BASE WILL INCREASE PRESSURE AGAINST THE TOP RAIL, MAKING IT MORE DIFFICULT TO ROLL BACK AND FORTH, BUT PREVENTING THE STANDARD FROM ROCKING WITHIN THE BASE.

LOWERING THE WHEELS IN THE SLOT WILL DECREASE PRESSURE AGAINST TOP RAIL, ALLOWING THE BASE TO ROLL MORE FREELY, AND POTENTIALLY LETTING THE STANDARD ROCK BACK AND FORTH WITHIN THE BASE.



www.gillathletics.com  
800-637-3090

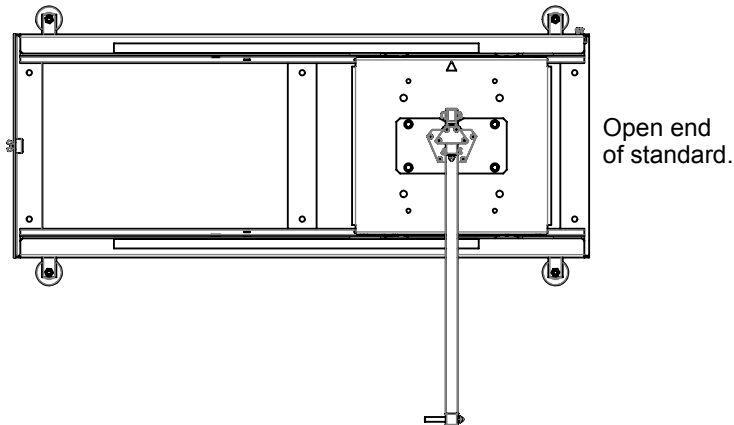
## G4 POLE VAULT STANDARD INSTALLATION INSTRUCTIONS



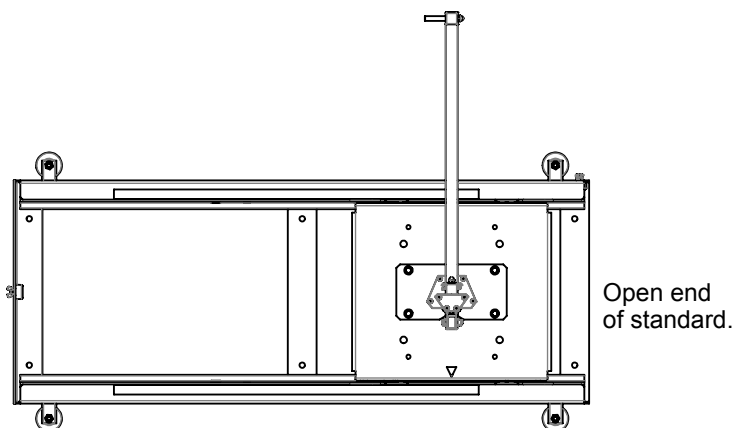
Instructional information from www.mktfastening.com.

### Tools Required:

- (1) Drill
- (1) 7/8" Masonry Bit
- (1) Hammer
- (1) 3/4" Wrench or Socket



1. Proper alignment of standards is critical before drilling anchor holes. See the next page for more information. After standards have been properly positioned, mark the hole placement.
2. Drill recommended diameter hole to depth of shield.
3. Clean hole of debris.
4. Insert shield in hole threaded end first and tap with hammer for proper positioning.
5. Place base rail back over holes.
6. Insert included 1/2"-13 bolt and 1/2" washer through rails into shield and tighten.



THIS WARNING IS GIVEN IN COMPLIANCE  
WITH CALIFORNIA'S PROPOSITION 65:

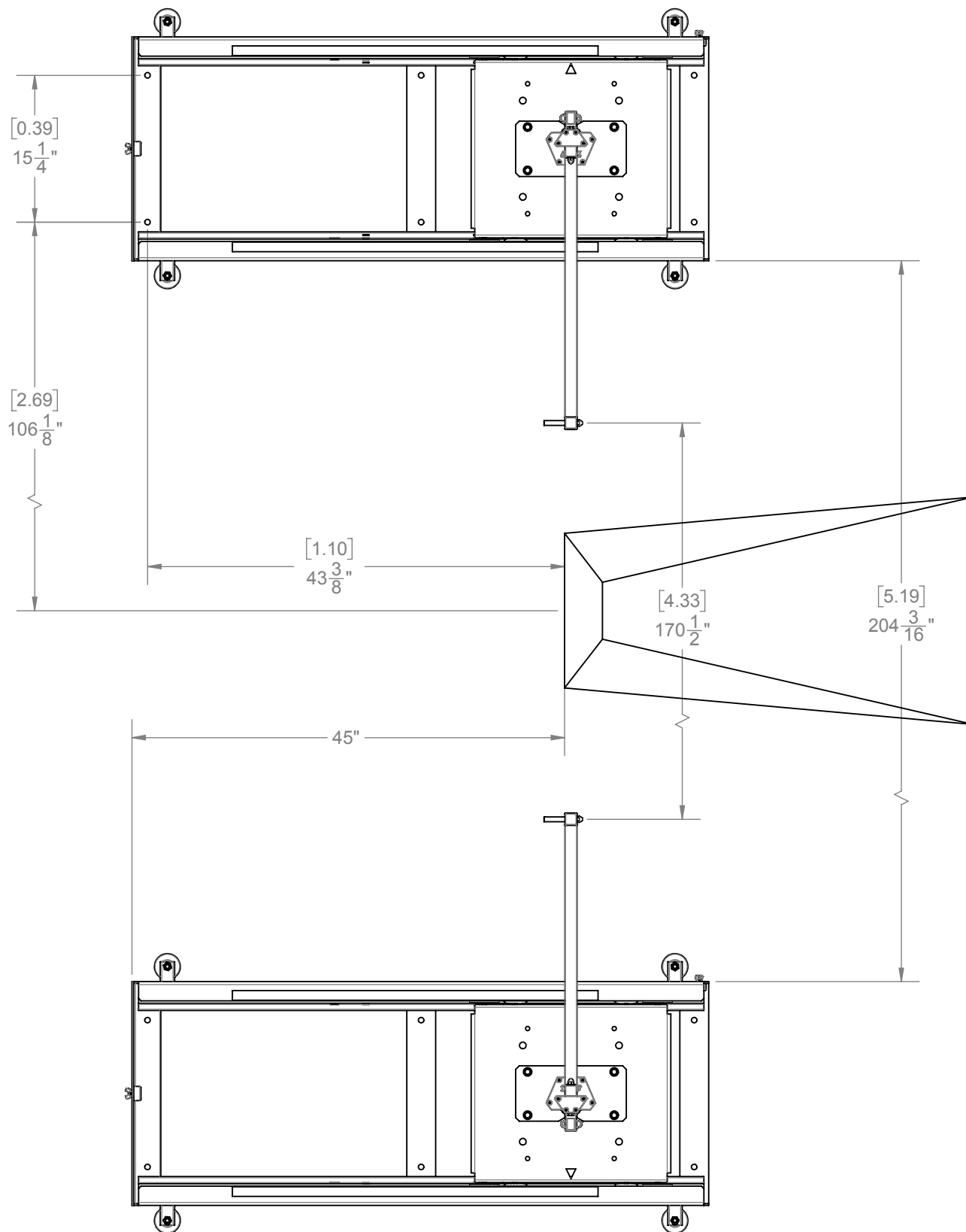
### **WARNING**

This product contains chemicals known to the  
State of California to cause cancer, birth defects  
or other reproductive harm.



www.gillathletics.com  
800-637-3090

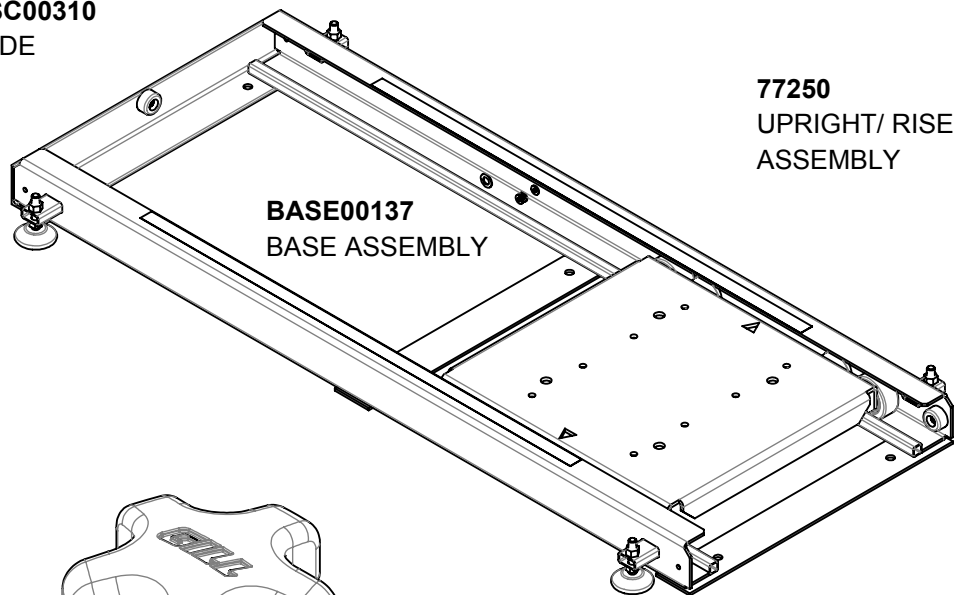
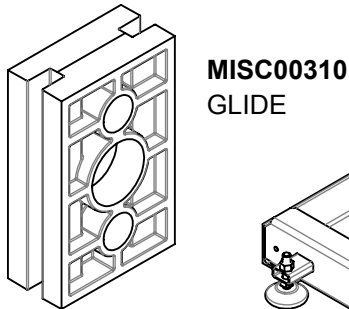
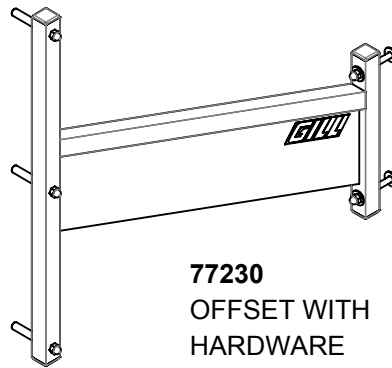
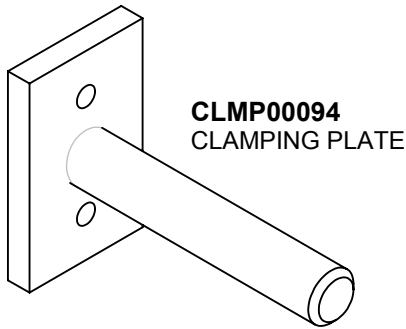
## G4 POLE VAULT STANDARD INSTALLATION INSTRUCTIONS



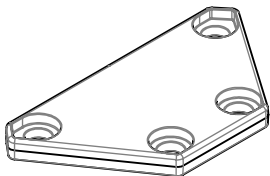


www.gillathletics.com  
800-637-3090

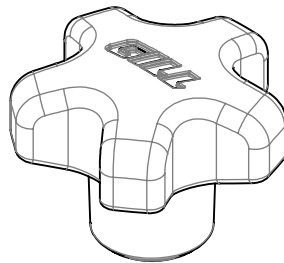
## G4 POLE VAULT STANDARD INSTALLATION INSTRUCTIONS



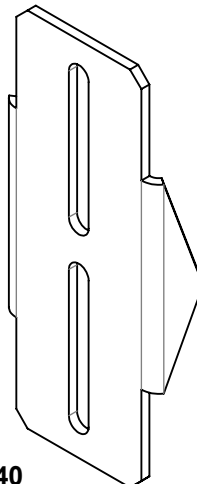
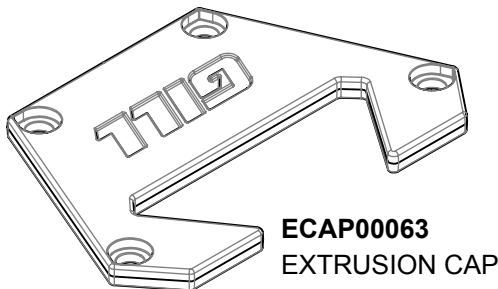
**77250**  
UPRIGHT/ RISER  
ASSEMBLY



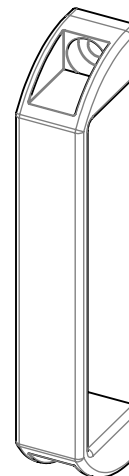
**ECAP00061**  
EXTRUSION CAP



**HAND00106**  
CLAMPING KNOB



**77240**  
ADJUSTABLE HEIGHT  
READOUT



**M2751**  
LIFTING HANDLE

