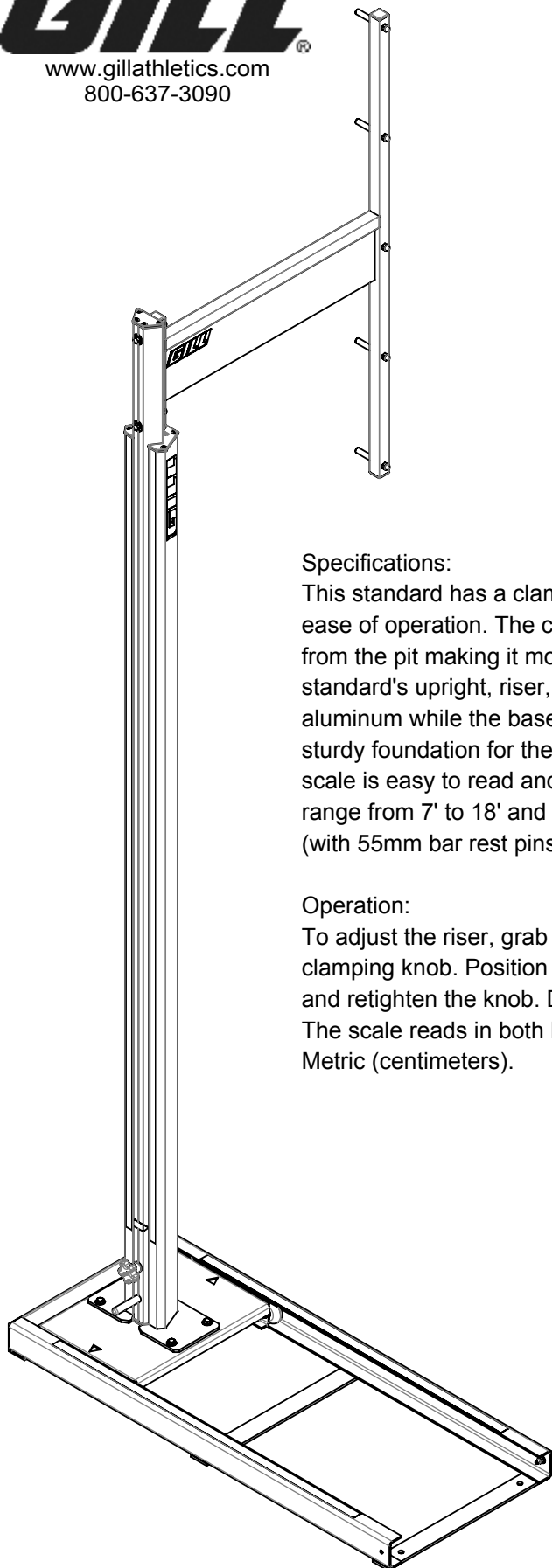




www.gillathletics.com  
800-637-3090

## S4 POLE VAULT STANDARD INSTALLATION INSTRUCTIONS

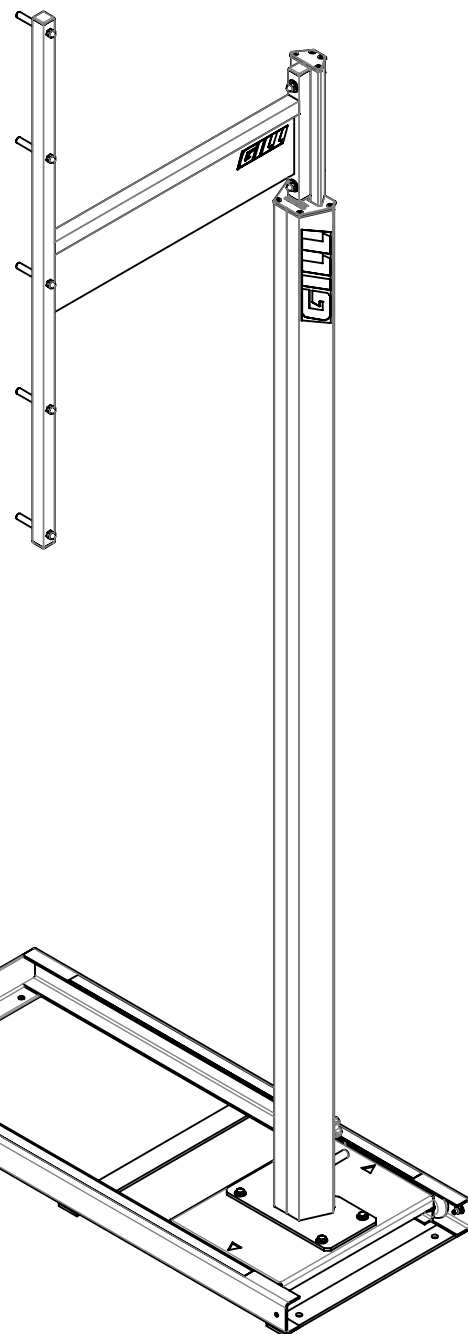


### Specifications:

This standard has a clamping system and a handle for ease of operation. The clamping knob is facing away from the pit making it more "official friendly". This standard's upright, riser, and offset are constructed of aluminum while the base is made from steel to provide a sturdy foundation for the standard. Dual English/ Metric scale is easy to read and calibrate. This standard has a range from 7' to 18' and meets High School and NCAA (with 55mm bar rest pins) specifications.

### Operation:

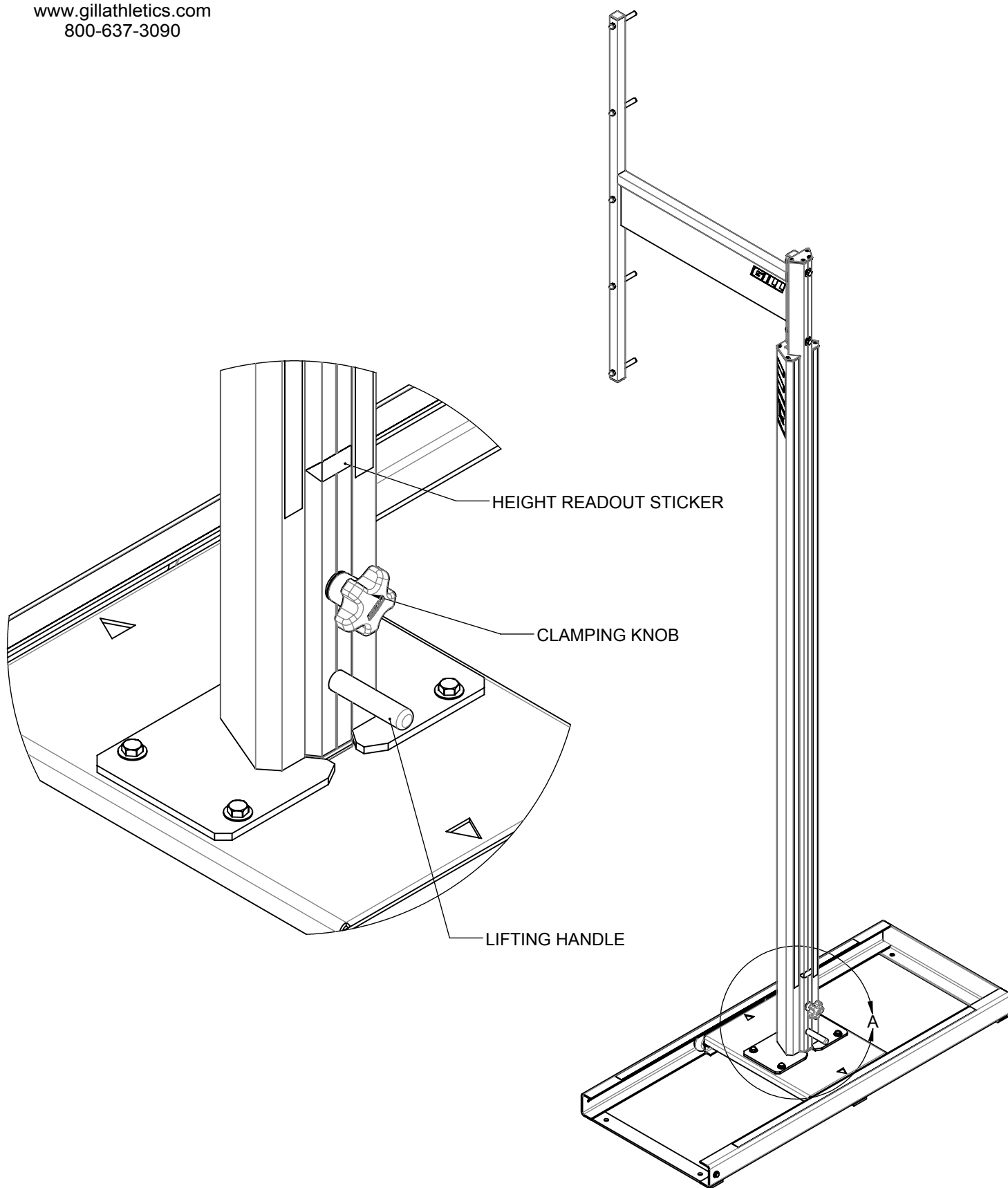
To adjust the riser, grab the handle and loosen the clamping knob. Position the riser at the desired height and retighten the knob. Do not lift the riser by the knob. The scale reads in both English (feet and inches) and Metric (centimeters).





www.gillathletics.com  
800-637-3090

## S4 POLE VAULT STANDARD INSTALLATION INSTRUCTIONS

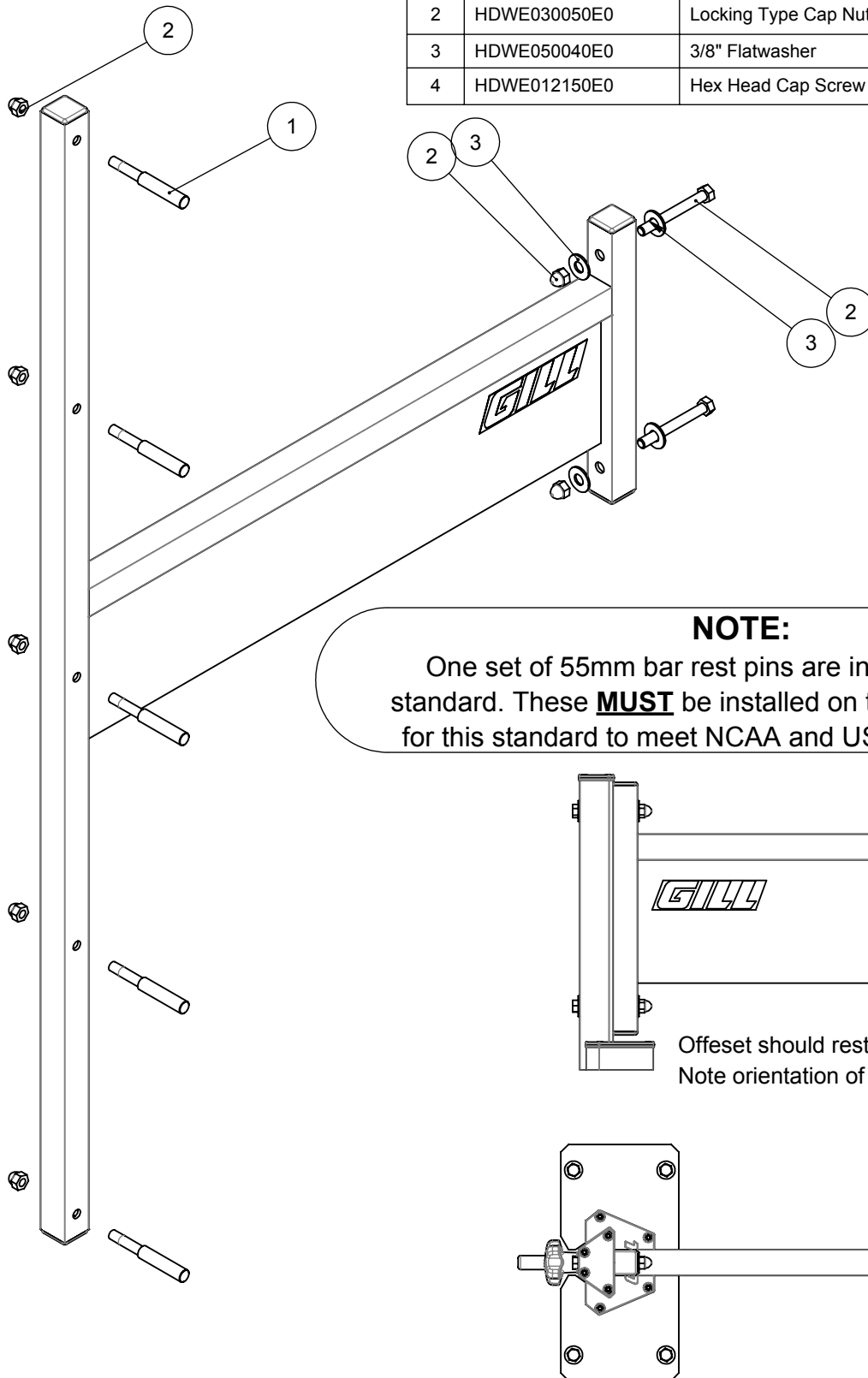




www.gillathletics.com  
800-637-3090

## S4 POLE VAULT STANDARD INSTALLATION INSTRUCTIONS

#	Part #	Description	QTY.
1	71429	75mm bar rest pin	5
2	HDWE030050E0	Locking Type Cap Nut - 3/8-16	7
3	HDWE050040E0	3/8" Flatwasher	4
4	HDWE012150E0	Hex Head Cap Screw - 3/8-16 X 3-1/4 Grade 5	2



### NOTE:

One set of 55mm bar rest pins are included with this standard. These **MUST** be installed on the offsets in order for this standard to meet NCAA and USATF regulations.

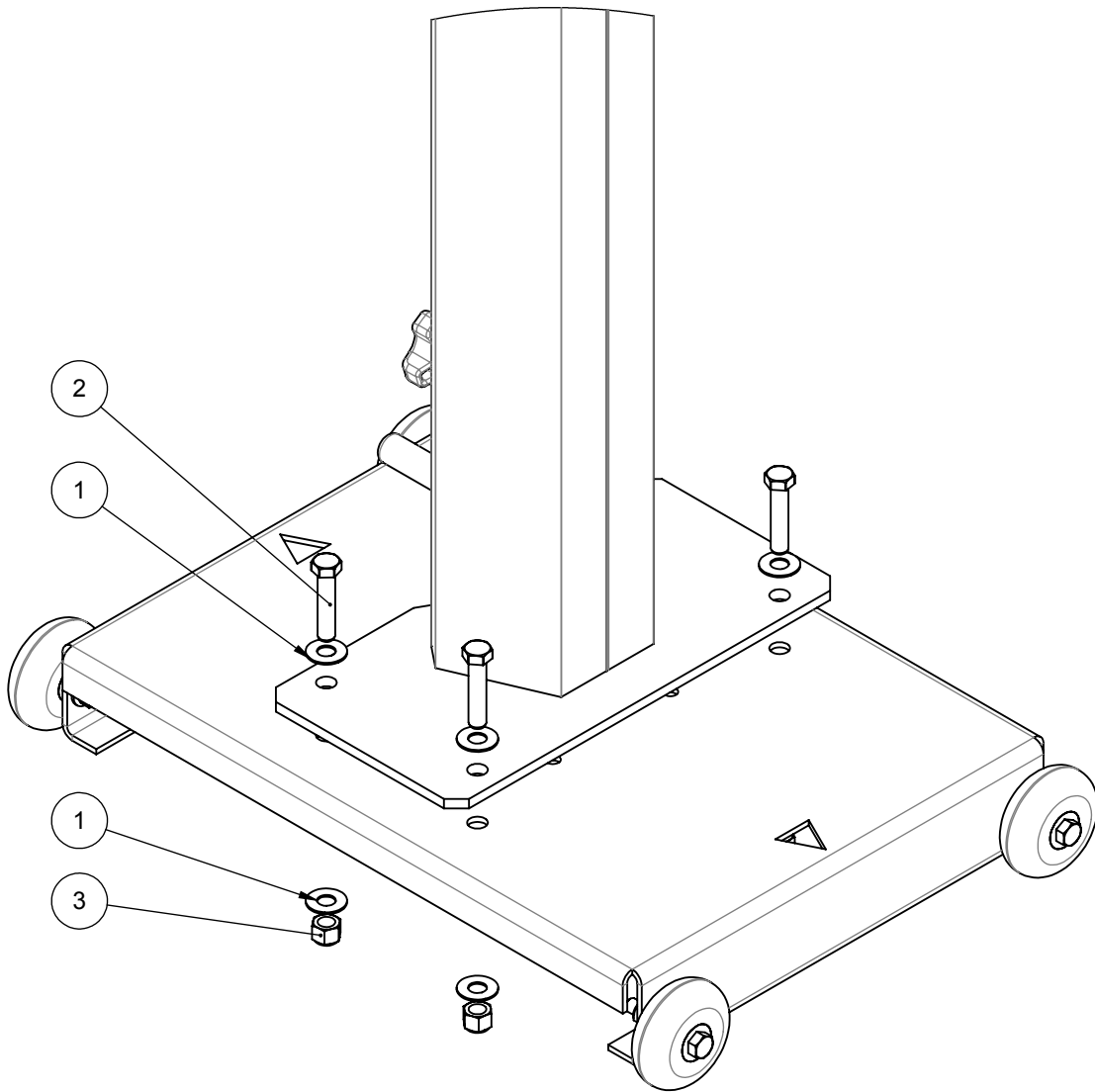
Offset should rest in groove of the riser extrusion.  
Note orientation of offset in relation to knob.



www.gillathletics.com  
800-637-3090

## S4 POLE VAULT STANDARD INSTALLATION INSTRUCTIONS

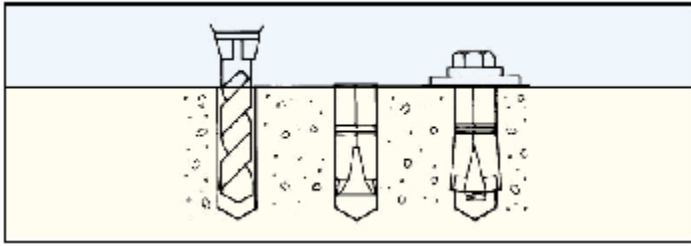
#	Part #	Description	QTY.
1	M2534	Washer, Flat, 3/8" SAE, .875" OD, .4" ID	8
2	M2533	3/8"-16 x 1 3/4" Stainless Steel Hex Bolt	4
3	M1291	3/8"-16 Nylock hex nut, standard height	4





www.gillathletics.com  
800-637-3090

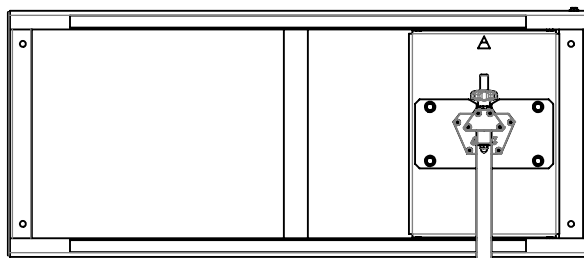
## S4 POLE VAULT STANDARD INSTALLATION INSTRUCTIONS



Instructional information from [www.mktfastening.com](http://www.mktfastening.com).

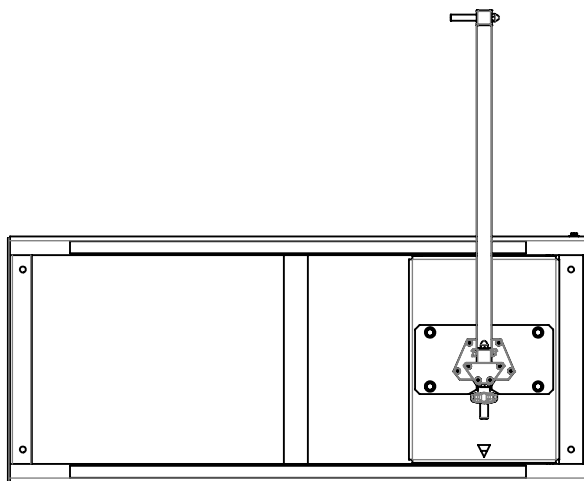
### Tools Required:

- (1) Drill
- (1) 7/8" Masonry Bit
- (1) Hammer
- (1) 3/4" Wrench or Socket



Open end  
of standard.

← Pit Runway →



Open end  
of standard.

1. Proper alignment of standards is critical before drilling anchor holes. See the next page for more information. After standards have been properly positioned, mark the hole placement.
2. Drill recommended diameter hole to depth of shield.
3. Clean hole of debris.
4. Insert shield in hole threaded end first and tap with hammer for proper positioning.
5. Place base rail back over holes.
6. Insert included 1/2"-13 bolt and 1/2" washer through rails into shield and tighten.

THIS WARNING IS GIVEN IN COMPLIANCE  
WITH CALIFORNIA'S PROPOSITION 65:

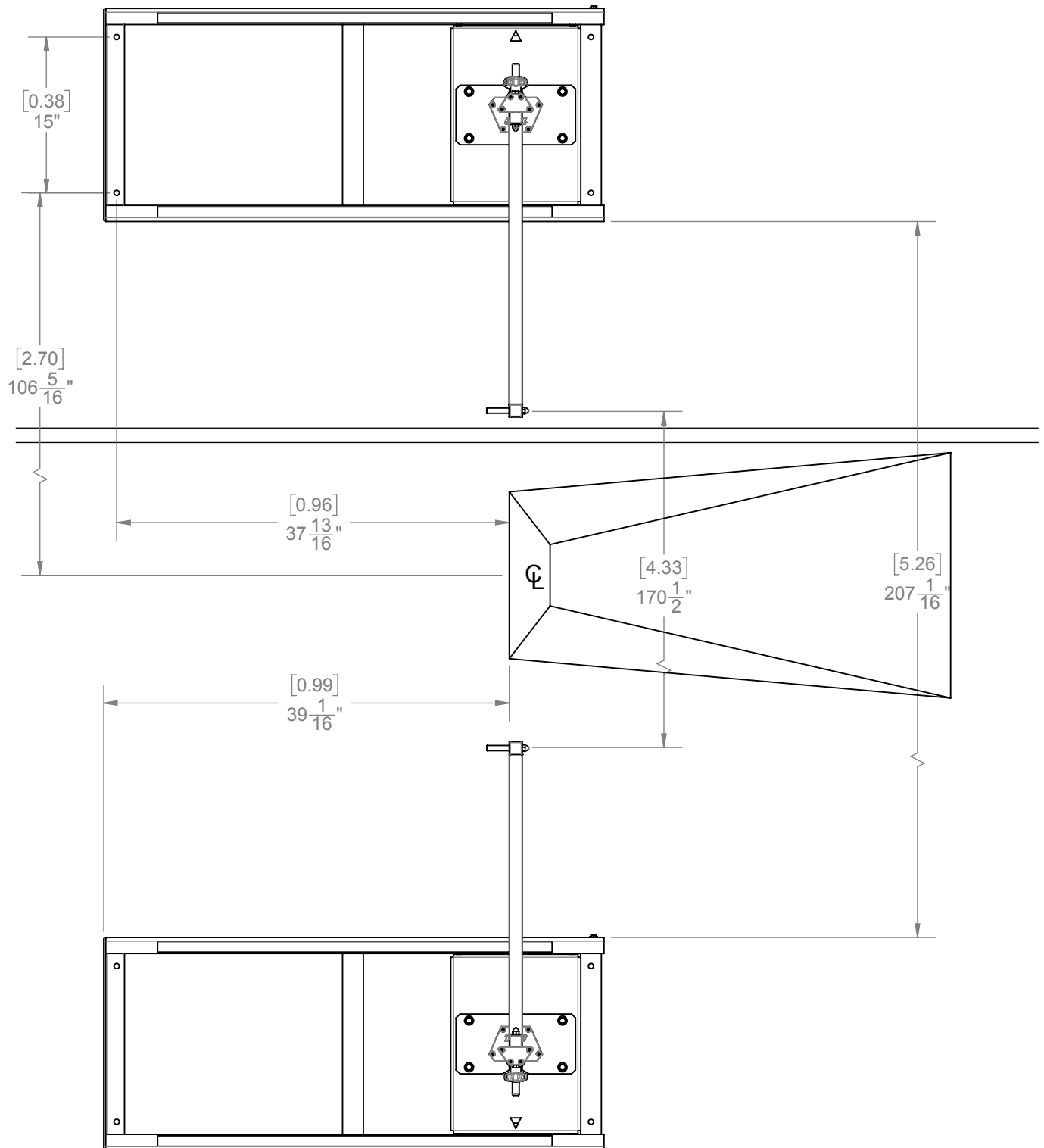
### **WARNING**

This product contains chemicals known to the  
State of California to cause cancer, birth defects  
or other reproductive harm.



www.gillathletics.com  
800-637-3090

## S4 POLE VAULT STANDARD INSTALLATION INSTRUCTIONS





www.gillathletics.com  
800-637-3090

## S4 POLE VAULT STANDARD INSTALLATION INSTRUCTIONS

