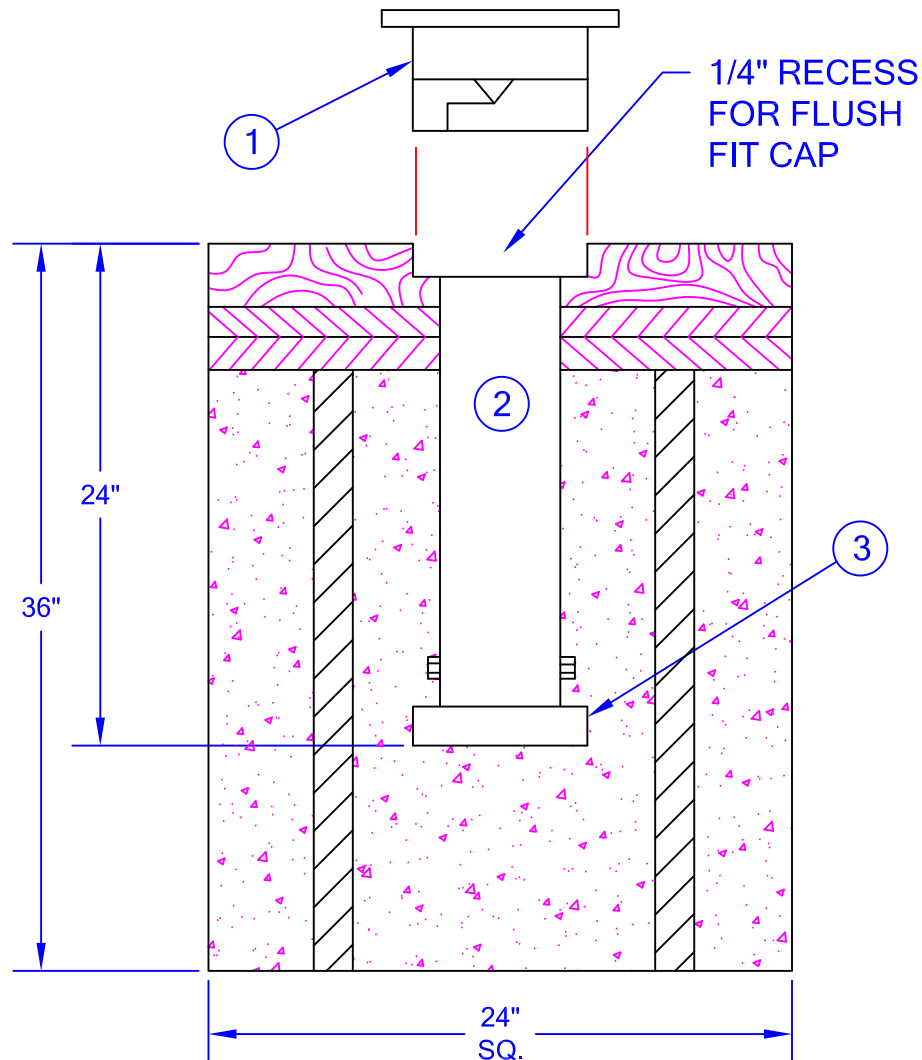


WOOD OR SYNTHETIC PLAYING SURFACE



THESE ARE MINIMUM SUGGESTED DIMENSIONS  
FOR AVERAGE SOIL CONDITIONS.

NOTE: CONCRETE SPECIFIED SHOULD BE 4000# MIN. CURING TIME SHOULD BE 14 DAY MIN. BEFORE PUTTING INTO SERVICE.

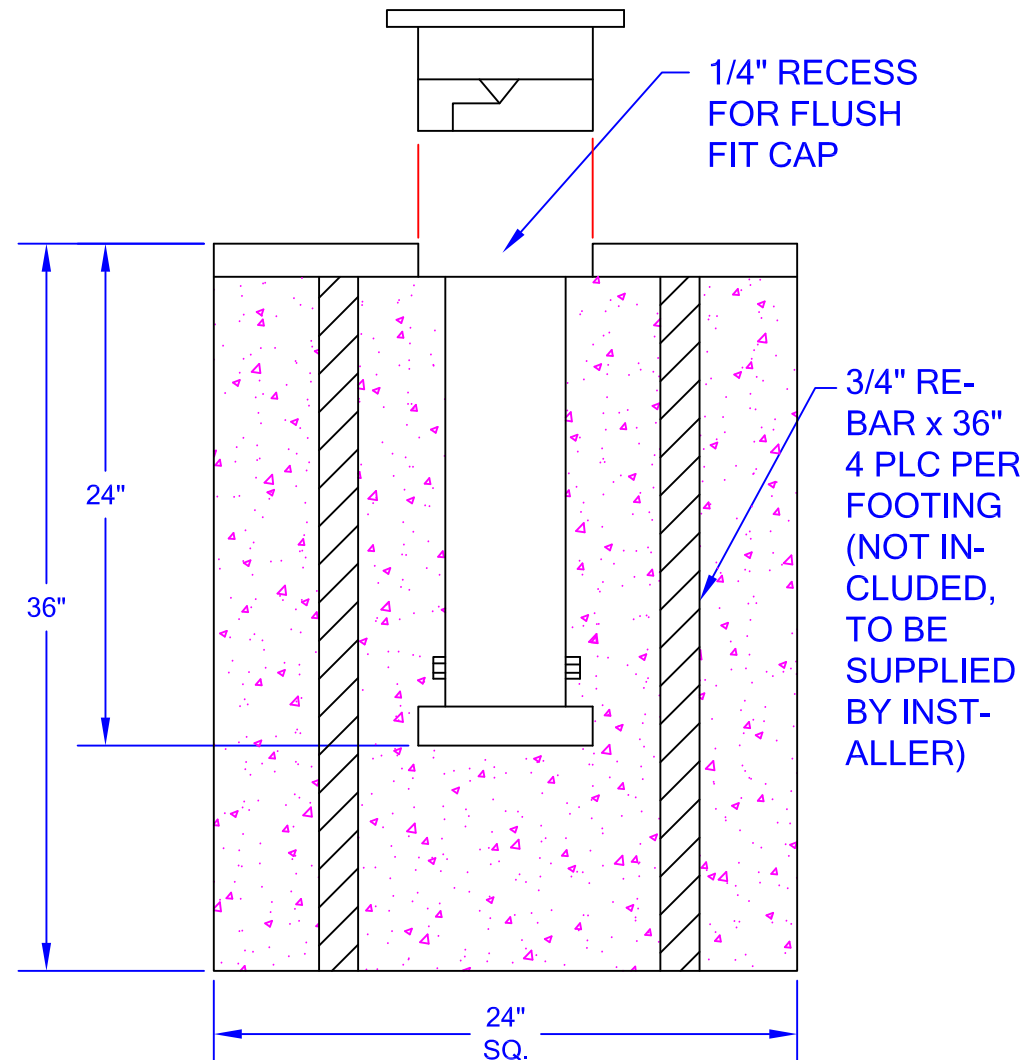
PLEASE NOTE:

1) FOR SAFE OPERATION AND CONTINUED HIGH PERFORMANCE FROM THIS EQUIPMENT, INSPECTION AND MAINTENANCE MUST BE PERFORMED BEFORE EACH USE.

2) USE OF THIS EQUIPMENT OTHER THAN INTENDED, MAY BE HAZARDOUS.

3) ALTERATION OR MODIFICATION OF EQUIPMENT MAY BE HAZARDOUS. FOR REPAIR OR REPLACEMENT, PLEASE CALL YOUR DEALER.

## GRAVEL, CLAY, OR ASPHALT PLAYING SURFACE



# Jaypro Sports

976 Hartford Turnpike  
Waterford, CT 06385 USA

(800)243-0533  
(800)988-3363 Fax  
[www.jaypro.com](http://www.jaypro.com)

MODEL NO.:  
**TP-150G**

# PRODUCT NAME: SLEEVE INSTALLATION INSTRUCTIONS

DRAWN BY: JAC

EFFECTIVE DATE:  
1-31-17

**JAYPRO SPORTS**  
TENNIS POSTS SLEEVE, TP-150G  
LIST OF MATERIALS

<u>PIECE NO.</u>	<u>PART NO.</u>	<u>DESCRIPTION</u>	<u>QTY.</u>
1	AF1213A	SLEEVE-TOP CAP	2
2	AP5010	GROUND SLEEVE	2
3	RP717	SLEEVE-BOTTOM CAP	2

IMPORTANT

**FOR TENNIS SLEEVE INSTALLATION, SET SLEEVES 42'-3 1/2" ON CENTER.**

**FOR OUTDOOR VOLLEYBALL INSTALLATION, SET SLEEVES 36' ON CENTER.**

TP-150G, SEMI-PERMANENT TENNIS POSTS  
SLEEVE INSTALLATION INSTRUCTIONS

Set ground sleeves exactly 42'-3 1/2" on center (42' between posts). This may require the services of a qualified local contractor familiar with the soil conditions and building codes particular to your area. The referenced minimum concrete dimensions are typical for average conditions, but unusual conditions may warrant modifications by the contractor.

**IMPORTANT: PROPER INSTALLATION OF THE GROUND SLEEVES IS  
ESSENTIAL TO THE SUCCESSFUL PERFORMANCE OF THIS  
UNIT.**

**NOTE: CONCRETE SPECIFIED SHOULD BE 4000# MIN. CURING TIME  
SHOULD BE 14 DAY MIN. BEFORE PUTTING INTO SERVICE.**