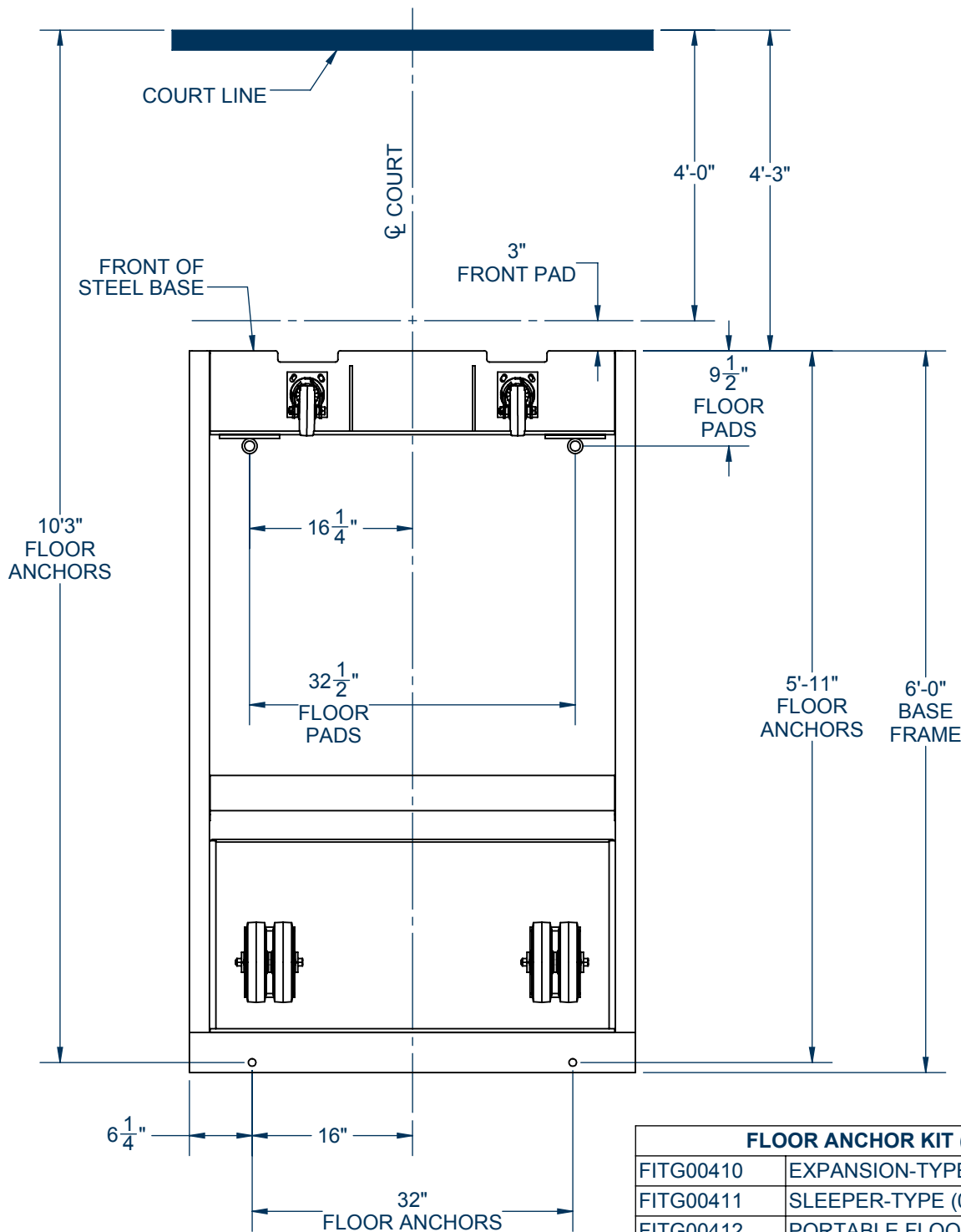


# FLOOR PLAN FOR 1135080 PORTABLES

## 1135080 TIE-DOWN LAYOUT



### FLOOR ANCHOR KIT (SPECIFY)

FITG00410	EXPANSION-TYPE (00247-100)
FITG00411	SLEEPER-TYPE (00244-000)
FITG00412	PORTABLE FLOOR-TYPE (00242-900)
FITG00413	THIN CONCRETE-TYPE (00242-100)
FITG00414	CAST-IN-SLAB TYPE (00247-000)

\_\_\_\_\_ - FLOOR ANCHOR KIT (INCLUDED); REQUIRED

FITG00300 - LOCATOR CUP KIT; OPTIONAL - QUANTITY DESIRED \_\_\_\_\_

# FLOOR PLAN FOR 1135080 PORTABLES

## 1135080 TIE DOWN SYSTEM

### SPECIFICATIONS

Tie-down system shall conform to the requirements as stipulated in the latest NCAA recommendation No. BR-22, Section II (dated July, 1992) which states "Portable back boards shall be secured to the floor so as to prevent movement".

Tie-down system shall consist of two (2) unitized steel, 1/2"-13 threaded rods with hand wheels which mount through the base frame of the portable and into two (2) floor anchors provided. Specify floor anchor kit by floor type. (Kit No. FITG00410 or No. FITG00411 recommended for anchorage into concrete slab.)

Front of base shall be furnished with two pressure lock type floor pads that lock goal at competition 10'-0" height setting and lift base off of front casters. Floor pad locating cups and No. 00242000 floor anchors that maintain the position of the unit on the playing floor may be added with the optional FITG00300 kit.