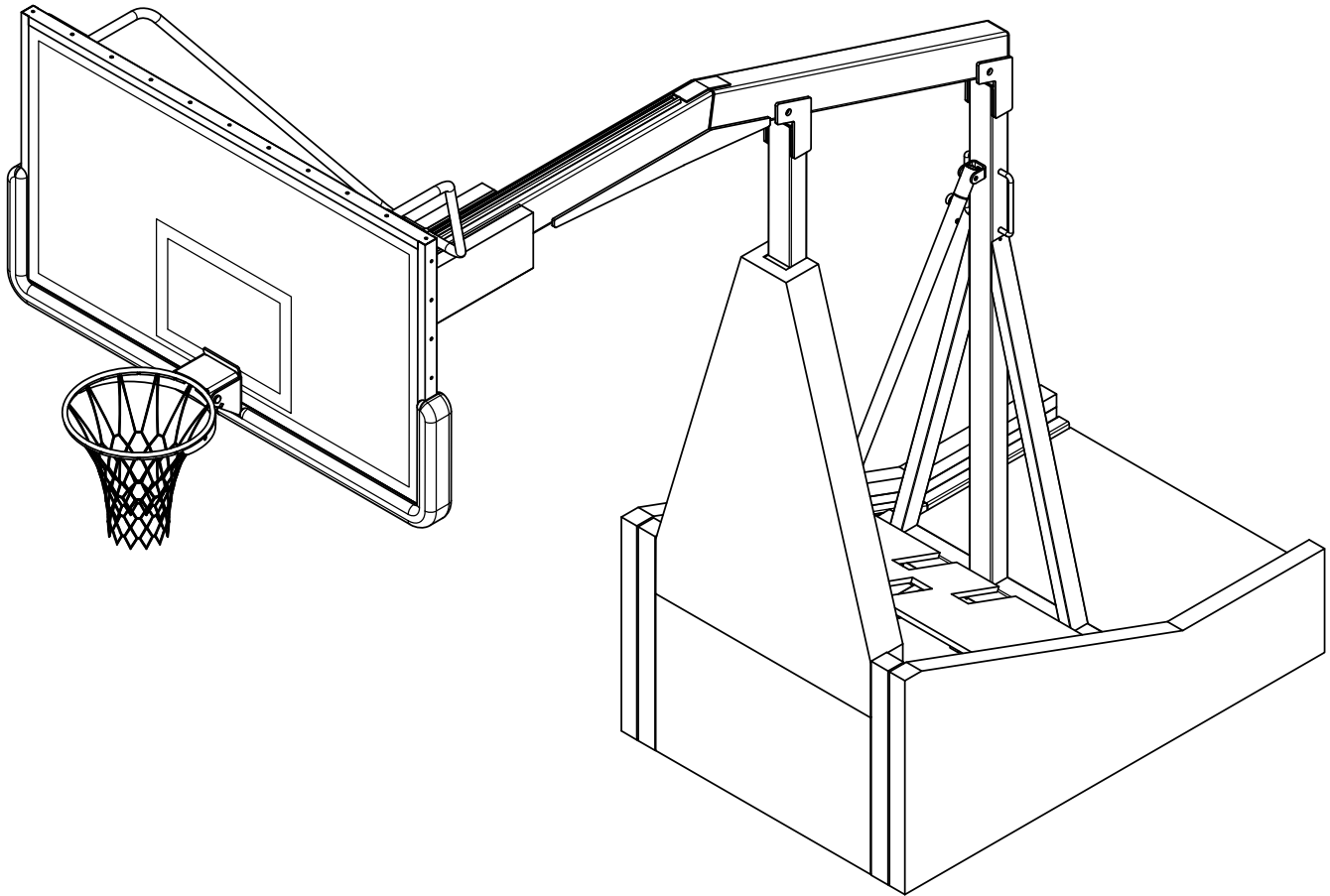




www.porterathletic.com
888-277-7778

1135 Portable Basketball Backstop Installation, Operation, and Maintenance Manual



INSTALLER NOTE:

**UPON COMPLETION OF THE INSTALLATION/ ASSEMBLY OF THIS PORTABLE BACKSTOP,
MAKE SURE THIS INSTRUCTION MANUAL IS IN POSSESSION OF THE OWNER OR
FACILITY MANAGER, TO SAVE FOR FUTURE REFERENCE.**



www.porterathletic.com
888-277-7778

1135 Portable Basketball Backstop Installation, Operation, and Maintenance Manual

Dear Customer:

Congratulations on purchasing the Porter No. 735 Height-Adjustable Portable Basketball Backstop. This quality built backstop features the unique Porter Center-Strut design, height settings for all age groups, and effortless spring-assisted folding action.

This booklet is intended to be used for the initial set-up of your No. 735 backstop, and as a guide for the safe use and maintenance of the backstop. **PLEASE READ THESE INSTRUCTIONS CAREFULLY AND COMPLETELY BEFORE BEGINNING THE SET-UP WORK, OR MAINTENANCE, OF THIS BACKSTOP.**

If, after reviewing this manual, you have any questions, please feel free to consult our factory.



Porter Athletic Equipment Company
601 Mercury Drive, Champaign, IL U.S.A., 61822
Phone: (888) 277-7778 • Fax: (217) 239-2255
www.porterathletic.com

TABLE OF CONTENTS

ITEM / DESCRIPTION	PAGE No.
Parts List	4
Advisory Information	5 - 6
Assembly and Setup	6 - 19
Operating Procedures	20
Spring Adjustments	21 - 22
Maintenance	23
Guarantee	24
Appendices	25 - 26



www.porterathletic.com
888-277-7778

1135 Portable Basketball Backstop Installation, Operation, and Maintenance Manual Parts List

FRAME COMPONENTS

Item #	Part #	Quantity	Description
1	208	1	Glass Backboard
2	236054	1	Ultra-Flex II Goal
3	SWAY20000	1	Swaybrace With Hardware
4	FEET00045	2	Locating/ Height Adjustment Feet
5	HAN00110	1	Tie Down Knob
6	00326XXX	1	Backboard Padding

PAD SET

Item #	Part #	Quantity	Description
7	PAD113501XX	1	Upper Mast Pad
8	PAD11350	1	Lower Mast Pad
9	PAD11350	1	Front Filler Pad
10	PAD11350	1	Base Side Pad; Left
11	PAD11350	1	Base Side Pad; Right
12	PAD11350	1	Ballast Cover
13	PAD11350	1	Spring Cover
14	PAD11350	OPTIONAL	Boom Pad

TOOLS REQUIRED:

9/16" Wrench
Stepladder
Portable Drill With Clutch Adjustment
11/16" Drill Bit

Tape Measure
Level
5/16" Socket (1/4" Drive)
10mm Allen Wrench

WARNING

DANGER / WARNING ON MISUSE OF PORTABLE BACKSTOPS (Published in Compliance with NCAA Comments on the Rules of Basketball)

Read all warnings thoroughly before using this equipment. Failure to comply with the following instructions and warnings may result in serious injuries and/or property damage.

A high degree of injury potential and severe liability problems exist when players or spectators are allowed to hang, sit or stand on the goal, backboard or support structure.

This equipment is NOT designed for adding weight to the goal or backboard. Please do not climb on the goal, backboard or support structure.

Administrators are cautioned that this practice be eliminated and that portable backstops are lowered immediately after the completion of each game. There is a high risk of severe injury or even death if these instructions are not strictly followed.

The use of a floor tie-down system for all competition games is mandatory and is the responsibility of game management and the personnel responsible for the facility.

This backstop must be operated only by authorized adult personnel familiar with the safe operating instructions and procedures as described in this operating manual. Read and refer to all operating instructions before attempting to operate this backstop.

CAUTION – The following steps must be observed to provide the safe operation of this portable backstop:

- Do not roll this backstop on the floor unless it has been fully lowered to the storage/transport position.
- Before moving this backstop in the storage/transport position, check to ensure that the thru pin locking mechanism is fully engaged through the telescoping brace and is padlocked in place.
- When raising or lowering this backstop, stand to one side and keep all individuals clear from beneath backstop (front and back), and grasp only by the side handles.
- Keep hands and feet away from all pinch or crush points.
- When raising or lowering this backstop to the playing or storage/transport position, move backstop slowly to avoid tipping or damage to the structure.
- Padlock telescoping brace thru pin in any playing or storage position (see OPERATING PROCEDURES on page 5) to avoid tampering, vandalism, or use by unauthorized individuals.
- Inspect this equipment for wear, loose fittings, damage and proper stability before each use. Consult a trained service technician or the factory when in doubt.

THE OWNER OF THIS EQUIPMENT IS RESPONSIBLE TO ENSURE THAT ALL INDIVIDUALS FOLLOW THESE SAFETY AND OPERATING INSTRUCTIONS TO AVOID INJURIES OR PROPERTY DAMAGE. PROPER USE AND SUPERVISION OF THIS EQUIPMENT IS ESSENTIAL TO HELP REDUCE THE POSSIBILITY OF ACCIDENTS OR INJURIES.

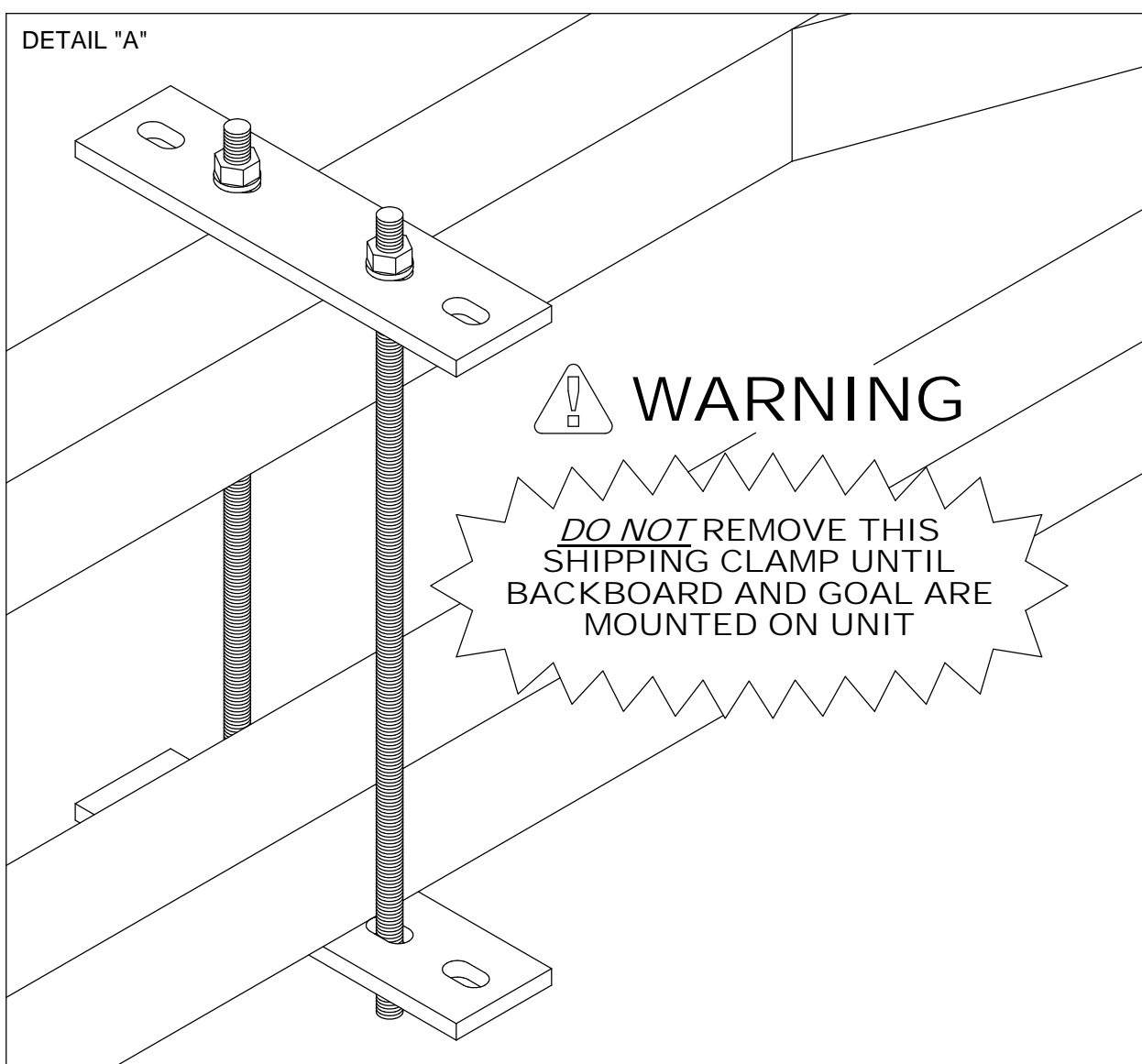
IMPORTANT

FILE THIS ASSEMBLY, ADJUSTMENT, OPERATION & MAINTENANCE MANUAL IN A SAFE LOCATION FOR FUTURE REFERENCE, TO AVOID INJURIES OR PRODUCT DAMAGE WHEN REPLACING A BACKBOARD, OR PERFORMING OTHER NECESSARY MAINTENANCE.

ASSEMBLY AND SET-UP

WARNING

THE SPRING-ACTIVATED MECHANISM ON THIS BACKSTOP MAY BE EXTREMELY DANGEROUS IF THESE ASSEMBLY INSTRUCTIONS AND OPERATING PROCEDURES ARE NOT FOLLOWED STEP-BY-STEP. **UNDER NO CIRCUMSTANCES SHOULD THE SHIPPING CLAMP (SEE DETAIL BELOW) BE REMOVED BEFORE THE BACKBOARD, GOAL, AND SWAYBRACES ARE ASSEMBLED TO THE BACKSTOP. FAILURE TO FOLLOW THIS PROCEDURE COULD RESULT IN PROPERTY DAMAGE, INJURIES, OR EVEN DEATH.** A MINIMUM OF THREE ADULTS (TO HOLD AND MOUNT BACKBOARD) ARE REQUIRED, FOR PROPER AND SAFE ASSEMBLY OF THIS BACKSTOP.



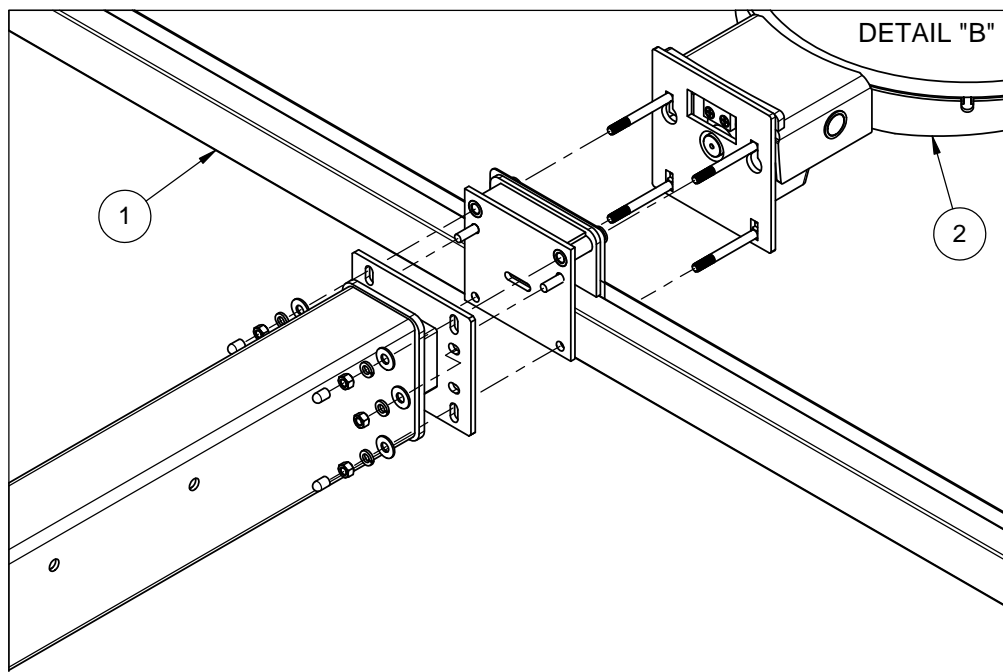
NOTE

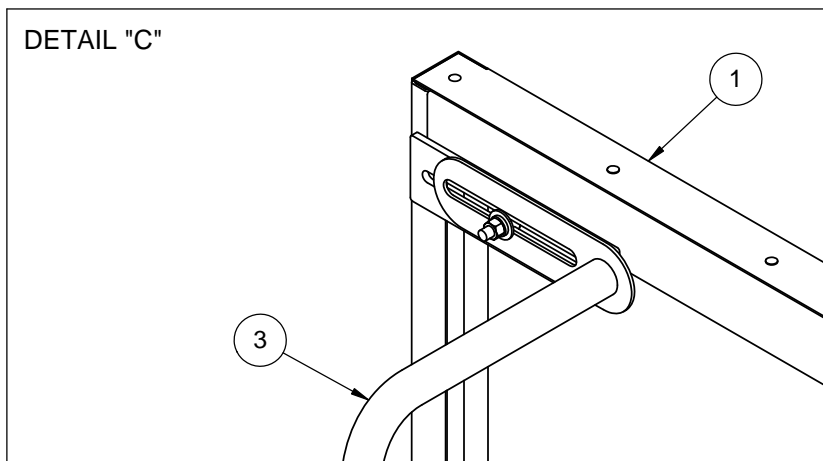
CAUTION - DURING ASSEMBLY OF THIS BACKSTOP, IT IS OF EXTREME IMPORTANCE THAT THE BACKBOARD IS NOT DROPPED, IMPROPERLY TORQUED (BOLTS TIGHTENED BEFORE PLUMBING ALL ATTACHMENT POINTS), OR THE GLASS SECTION BE ALLOWED TO CONTACT OR STRIKE METAL PARTS. THE WARRANTY DOES NOT COVER BREAKAGE DURING INSTALLATION.

1. Unpack and identify all parts (refer to Parts List on page 4).

BACKBOARD ASSEMBLY:

2. Position the unpacked glass backboard (#1) on its cardboard packing carton in front of portable backstop frame assembly (#4). Remove two 3/8" x 1-1/4" long carriage bolts, 3/8" flat washers, 3/8" lock washers, and 3/8" hex nuts from back of glass backboard.
3. It is recommended that at least three adults perform this step. Insert two 3/8" x 1-1/4" carriage bolts through the middle slot on either side of the backboard mounting plate. Carefully lift backboard (#1) and position so that middle backboard mounting slots are in alignment with the corresponding holes on the backstop mounting plate. See Detail "B".
4. While backboard is in this position, secure in place using two (2) 3/8" flat washers, 3/8" lock washers, and 3/8" hex nuts onto each 3/8" x 1-1/4" carriage bolt. Snug tighten only.





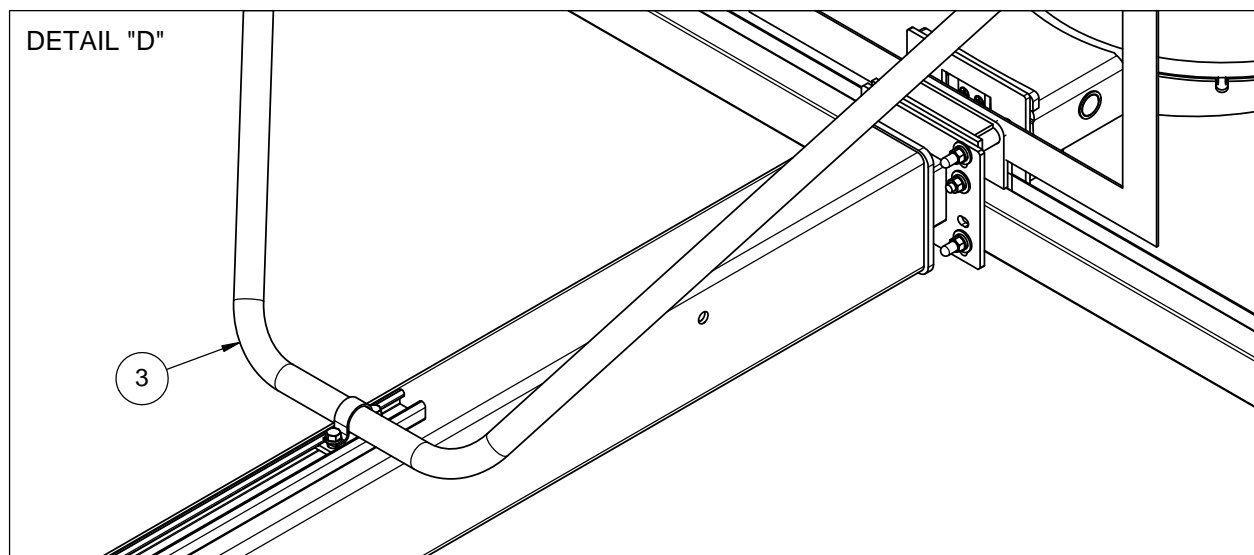
GOAL ASSEMBLY:

5. You are now ready to mount the goal. Carefully hold the goal (#2) against the face plate of the backboard (#1) and insert the four (4) 3/8" x 3-1/2" lg. carriage bolts through the goal, backboard, and the backstop mounting plate (refer back to Detail "B"). Backboard may have to be shifted slightly for proper alignment. Secure with four (4) 3/8" flat washers, 3/8" lock washers, and 3/8" hex nuts on backside of mounting plate. Place rubber cap on back of each carriage bolt. See Detail "B".

SWAY BRACE ASSEMBLY:

6. Attach the formed swaybrace (#3) into the slots in the upper corners of the glass backboard using two (2) 3/8" x 1-1/4" long carriage bolts, 3/8" flat washers, 3/8" lock washers, and 3/8" hex nuts. Finger tighten only (see Detail "C").

7. Attach back of swaybrace (#3) to the horizontal extension assembly (see Detail "D") using one (1) u-clamp, two (2) 3/8" lock washers, and two (2) 3/8"-16 unistrut nuts. Finger tighten only.





www.porterathletic.com
888-277-7778

1135 Portable Basketball Backstop Installation, Operation, and Maintenance Manual Assembly & Setup

Backboard Padding:

8. Install backboard padding (#6) to the backboard frame per the installation instructions packed with the backboard padding.

REMOVE SHIPPING CLAMP AT THIS TIME

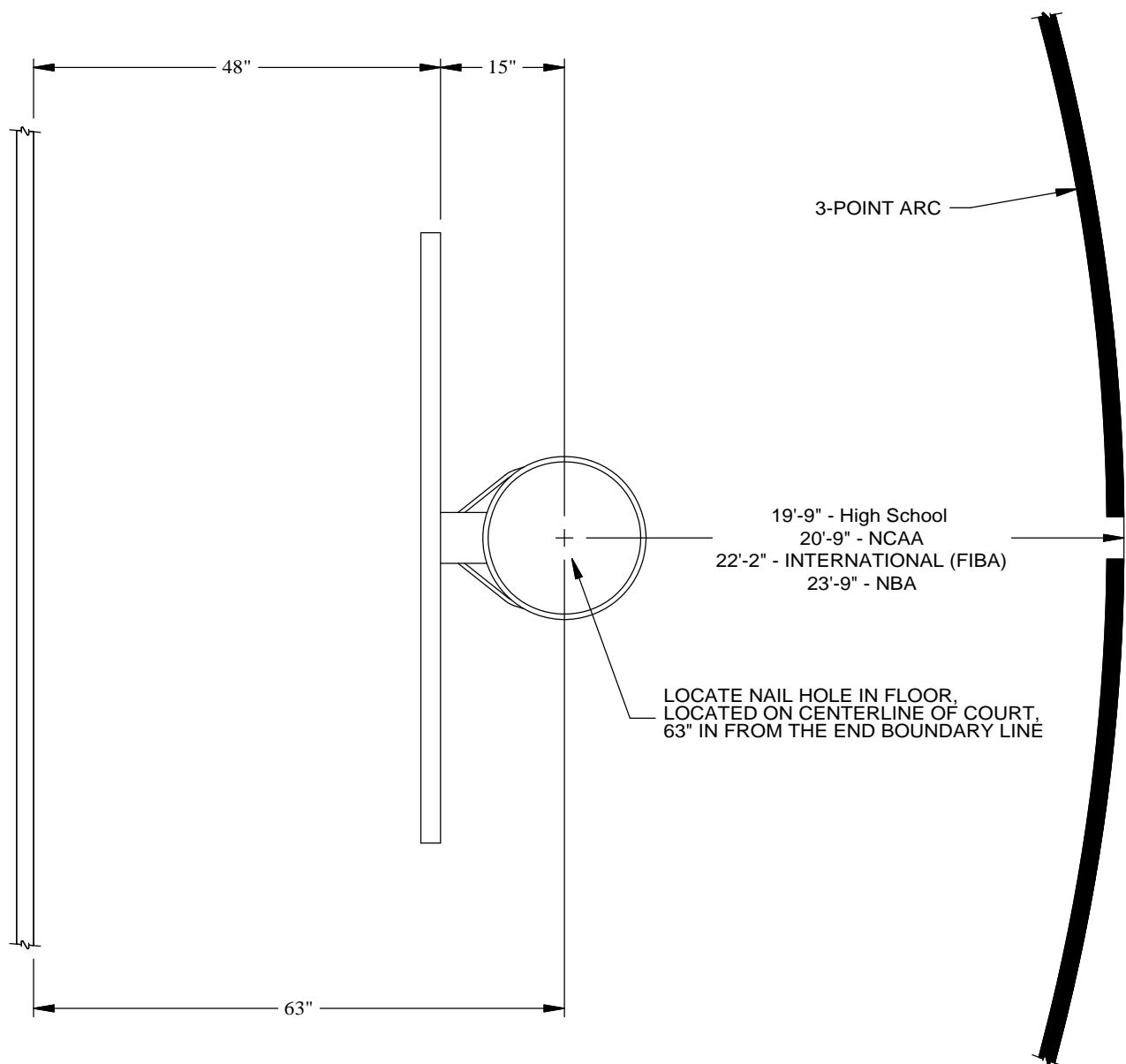
1. Keeping all individuals clear from beneath the backstop (front and back), from the side carefully loosen threaded rods and remove shipping clamps at this time. See detail on page 8.
2. Folding cycle of the backstop should be checked at this time – ***PROCEED WITH CAUTION.***

Remove the padlock and locking pin from the telescoping brace; also loosen the pressure lock handwheel slightly. See detail on page 5. Keeping all individuals clear from beneath the backstop (front and back), stand to one side of the rear of the base. Grasp the handle on the rear vertical support and slowly lift backstop into playing position.

CAUTION – WHEN RAISING THIS BACKSTOP INTO THE PLAYING POSITION, OR LOWERING THIS BACKSTOP INTO THE STORAGE POSITION, OPERATE BACKSTOP SLOWLY TO AVOID TIPPING OR DAMAGE TO THE STRUCTURE. OPERATE UNIT UP AND DOWN SEVERAL TIMES TO CHECK OPERATION. NEVER MOVE THE BACKSTOP FROM PLACE TO PLACE UNLESS THE BACKSTOP IS IN THE LOCKED-DOWN STORAGE POSITION!

3. With the backstop locked in the down or folded position, roll the backstop into the approximate playing position.
4. Raise the backstop to the playing position and align the face of the backboard parallel to and 4'-0" in from the inside edge of the 2" wide court line.
5. Lower front leveling feet when the backstop is properly positioned, to prevent it from rolling on the floor.
6. Using a stepladder, lay a level vertically on the face of the backboard. Shift the clamp assembly at the bottom end of the swaybraces forward or backward as required, to properly plumb the backboard. Tighten all hardware at both ends of swaybraces securely, to hold backboard in position.

LOCATING PORTABLE BACKSTOPS ON PLAYING FLOOR



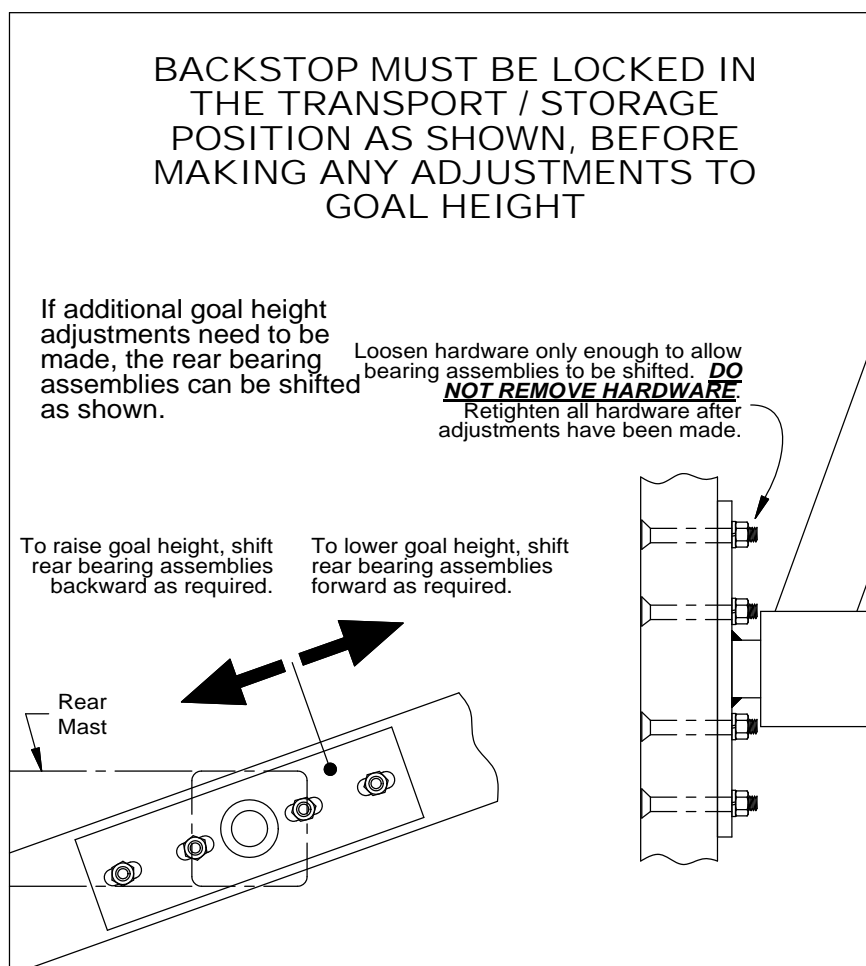
TO PROPERLY LOCATE A PORTABLE UNIT ON THE PLAYING FLOOR,
DROP A PLUMB LINE FROM THE EXACT CENTER OF THE GOAL AND
POSITION UNIT TO ALIGN WITH NAIL HOLE ON FLOOR. SHIFT BASE
FROM SIDE TO SIDE AS REQUIRED TO CENTER ON COURT.

ADJUSTMENT OF GOAL HEIGHT

With the backstop in the playing position, the goal should be 10'-0" +/- 1/8" above the playing surface. If adjustments to the goal height are necessary (goal is too low or too high), proceed according to the steps and details below. **NOTE – THE BACKSTOP MUST BE LOCKED IN THE TRANSPORT / STORAGE POSITION BEFORE ANY ADJUSTMENTS ARE MADE.**

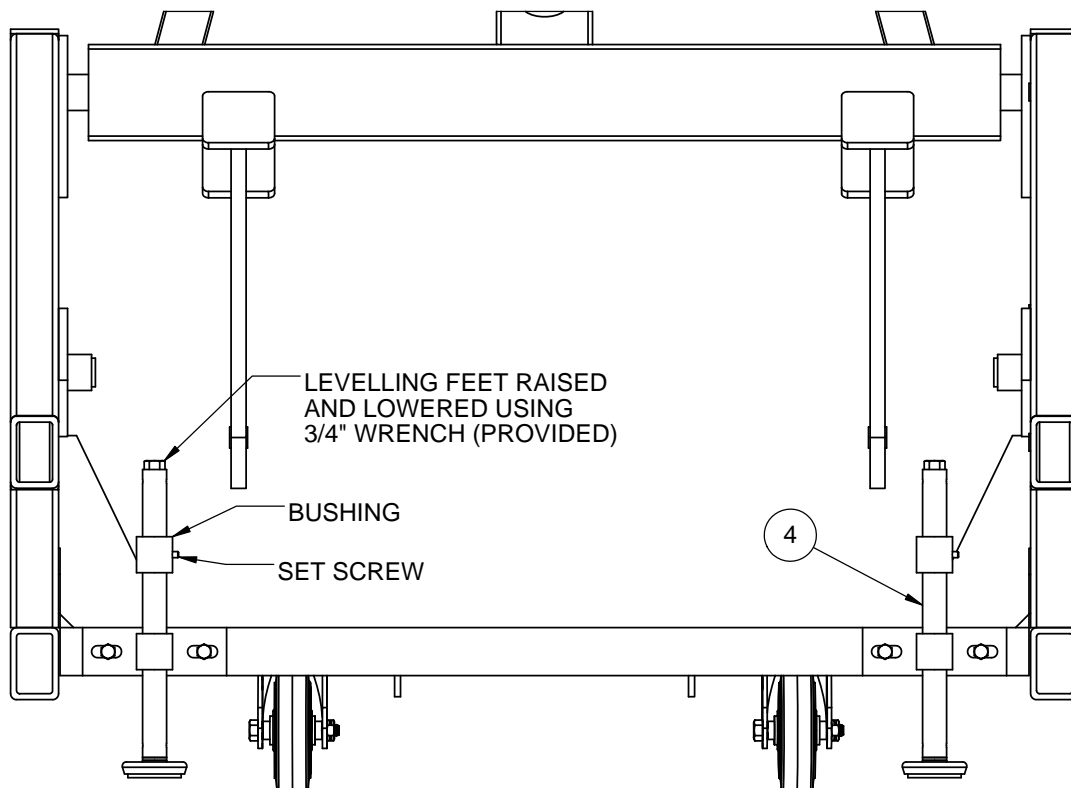
9. Begin by making adjustments at the REAR bearing assemblies first (at the lower end of the rear mast). See detail below. To raise the goal height, the rear bearing assemblies must be shifted backward. To lower the goal height, the rear bearing assemblies must be shifted forward. Loosen the hardware only enough to allow the bearing assemblies to be shifted. **DO NOT REMOVE THIS HARDWARE.** Shift both bearing assemblies as required, then retighten the hardware. Unlock the backstop, raise it to the playing position, and check the goal height. Repeat this process until the 10'-0" +/- goal height is achieved. If necessary, the front bearing assemblies can be adjusted forward and backward using the same process. When all adjustments are completed, make sure the hardware that secures the bearing assemblies to the base has been securely retightened. See detail below.

10. If after performing the above procedure, the goal height is still too high or too low, proceed to Step 3 on the next page.

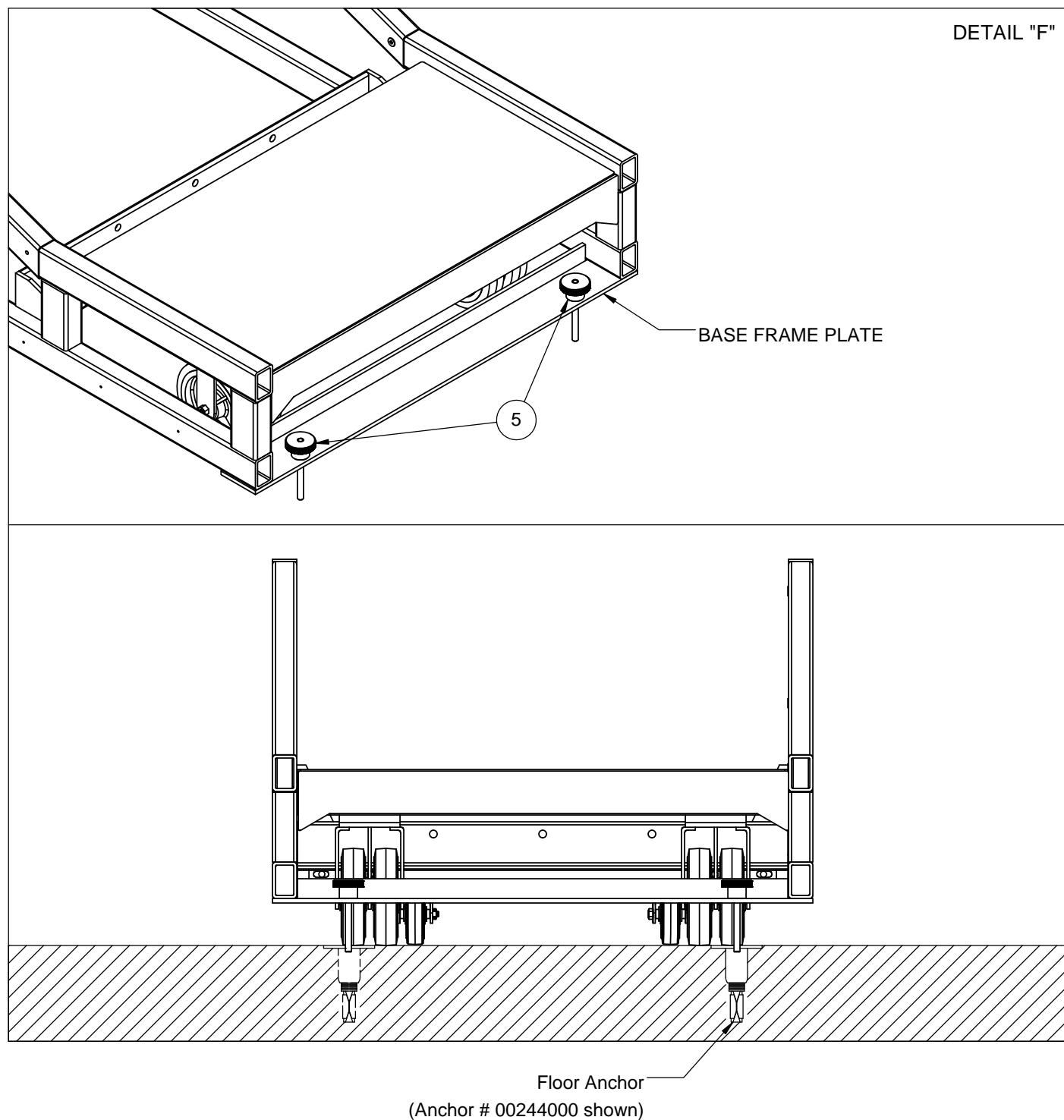


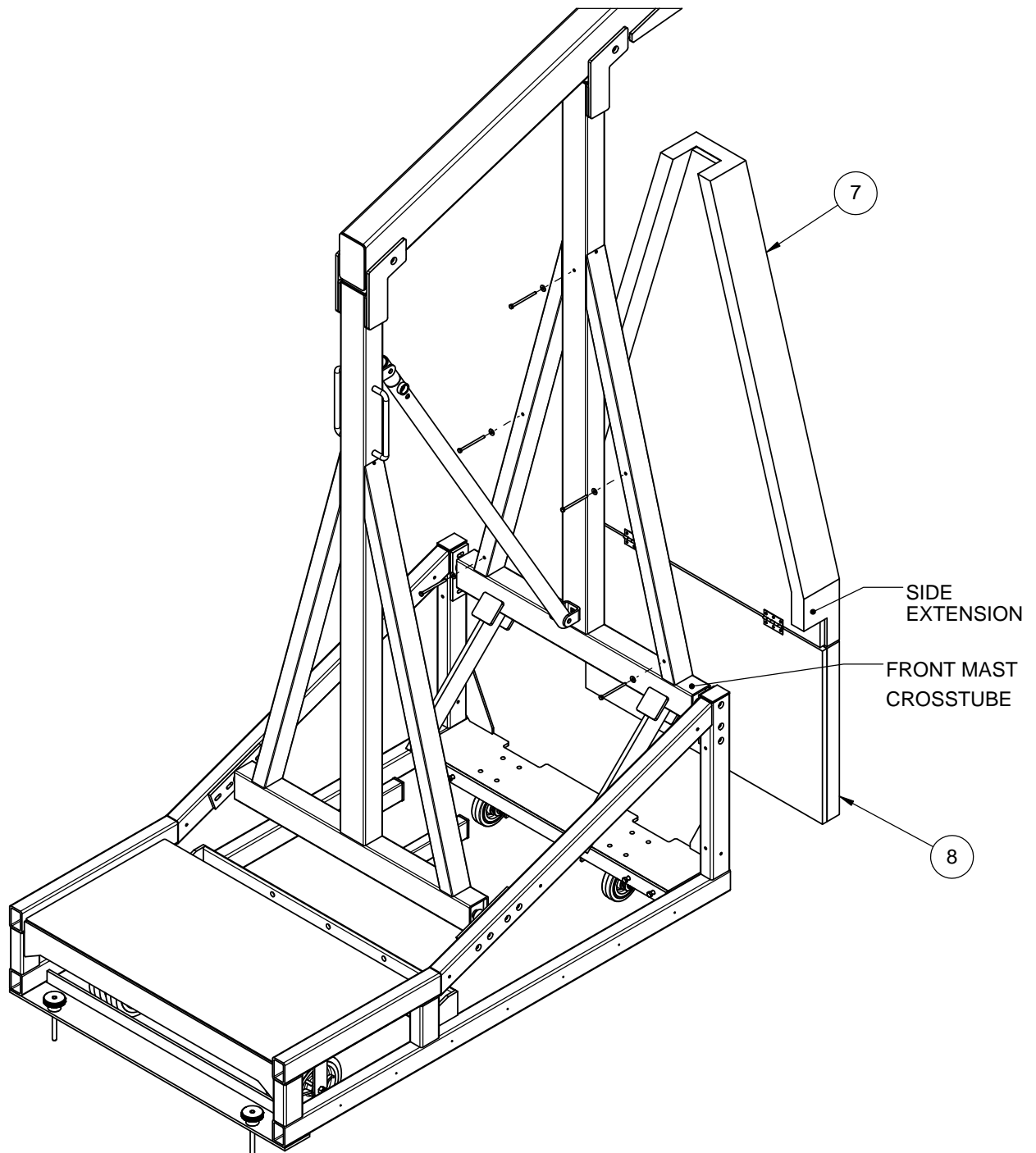
11. If necessary, additional adjustments can be made at the front leveling feet (#4). Loosen the set screw holding the bushing in place; refer to Detail "E" below. Raise or lower leveling feet equally until the 10'-0" +/- goal height is achieved. With the goal height set, lower bushings down acme rod until they bottom out on the mounting bracket. Tighten set screws to lock bushings in place. Once this has been done, levelling feet can be raised and lowered repeatedly and the 10'-0" playing height will consistently be reached by lowering the levelling feet until the bushing bottoms out on the mounting bracket. There is no need to re-set the bushing height unless it is determined the unit is no longer at 10'-0", in which case the bushing may have slipped over time. Leveling feet should always be lowered to the court before any use of the backstop. After use, raise the levelling feet high enough that they will clear any obstacles when backstop is rolled to storage location.

DETAIL "E"



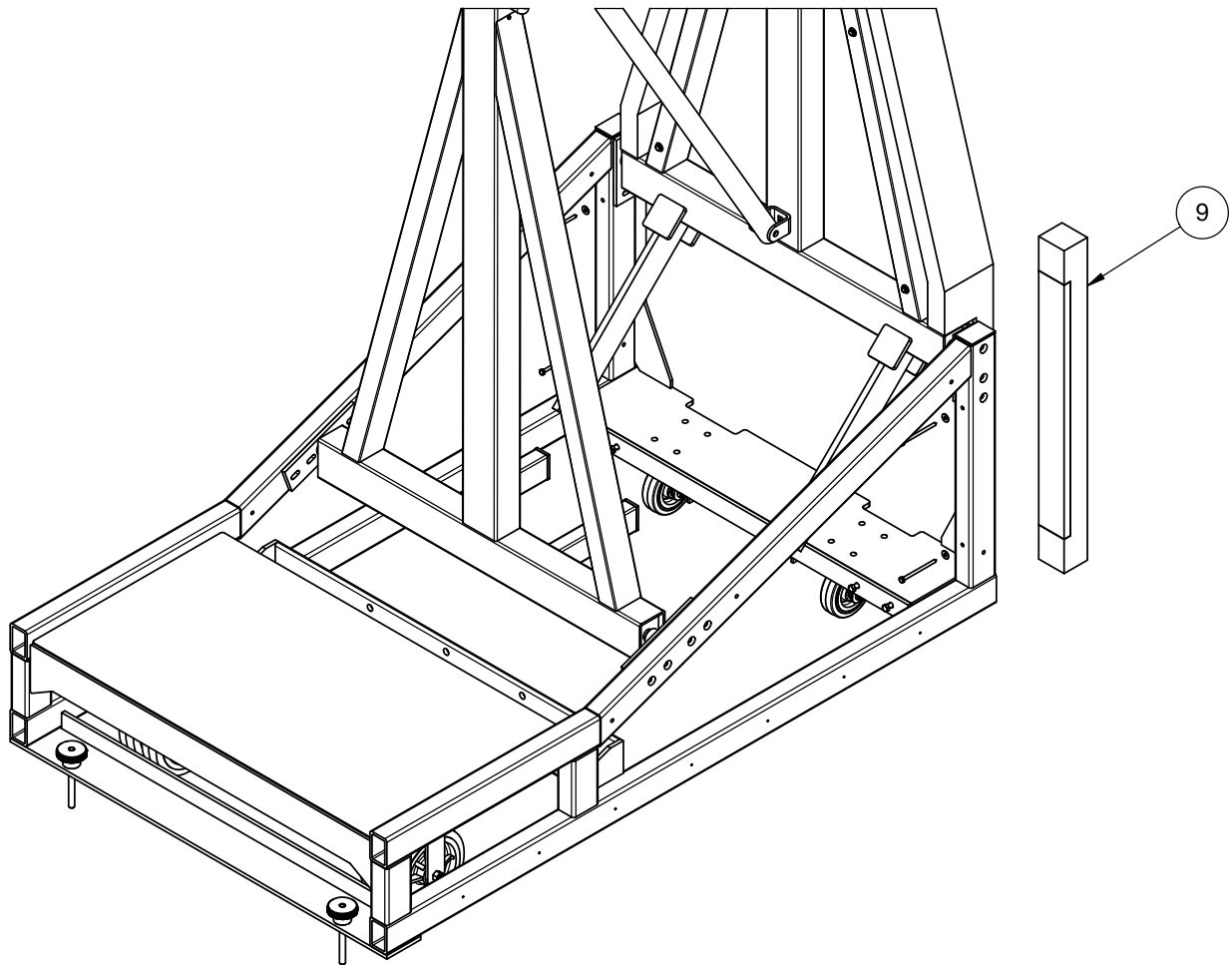
12. Before use of the portable backstop, ensure the tie down knobs (#5) are engaged in the floor anchors (see Detail "F"). Position the portable such that the thru holes at the back of the base frame line up with the floor anchors in the playing surface. Place tie down knob through the base frame plate and thread into the floor anchor until the handle of the tie down knob is snug against the base frame plate; do not overtighten.





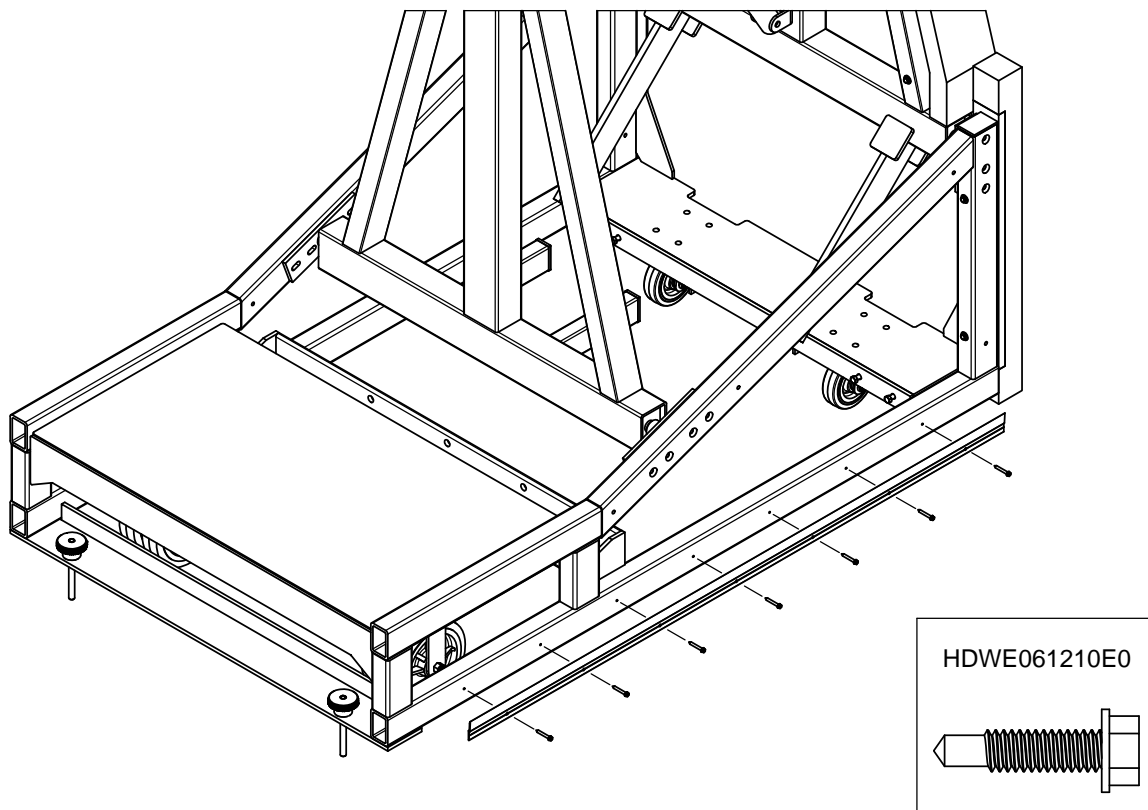
Front Padding:

Set the front padding assembly onto the front mast by resting the side extensions of the front mast pad onto the front mast crosstube; setting the goal height to the 8' or 9' setting can assist in this process. Attach the front mast pad to the front mast using four (4) 1/4" x 4" long lag screws and 1/4" flatwashers provided.



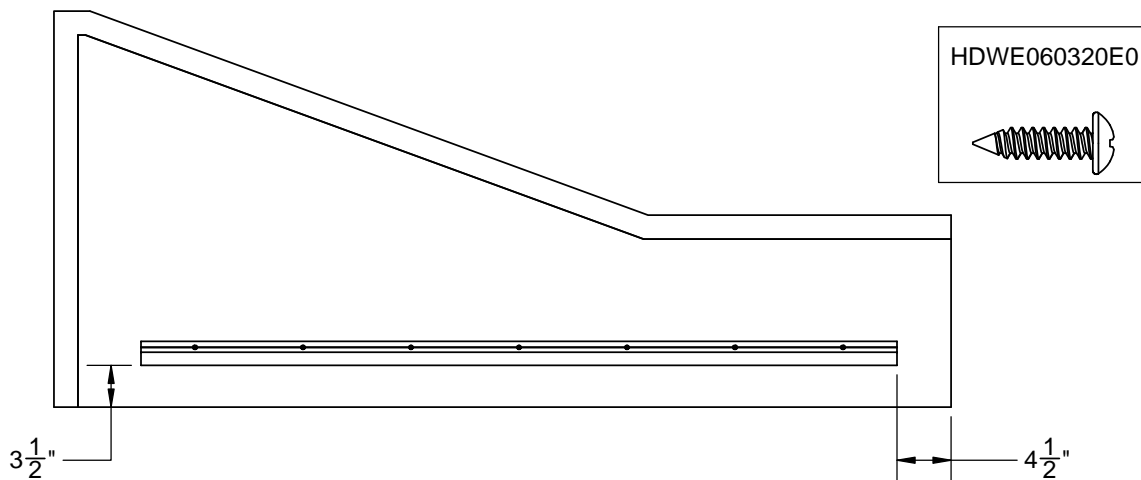
Filler Pads:

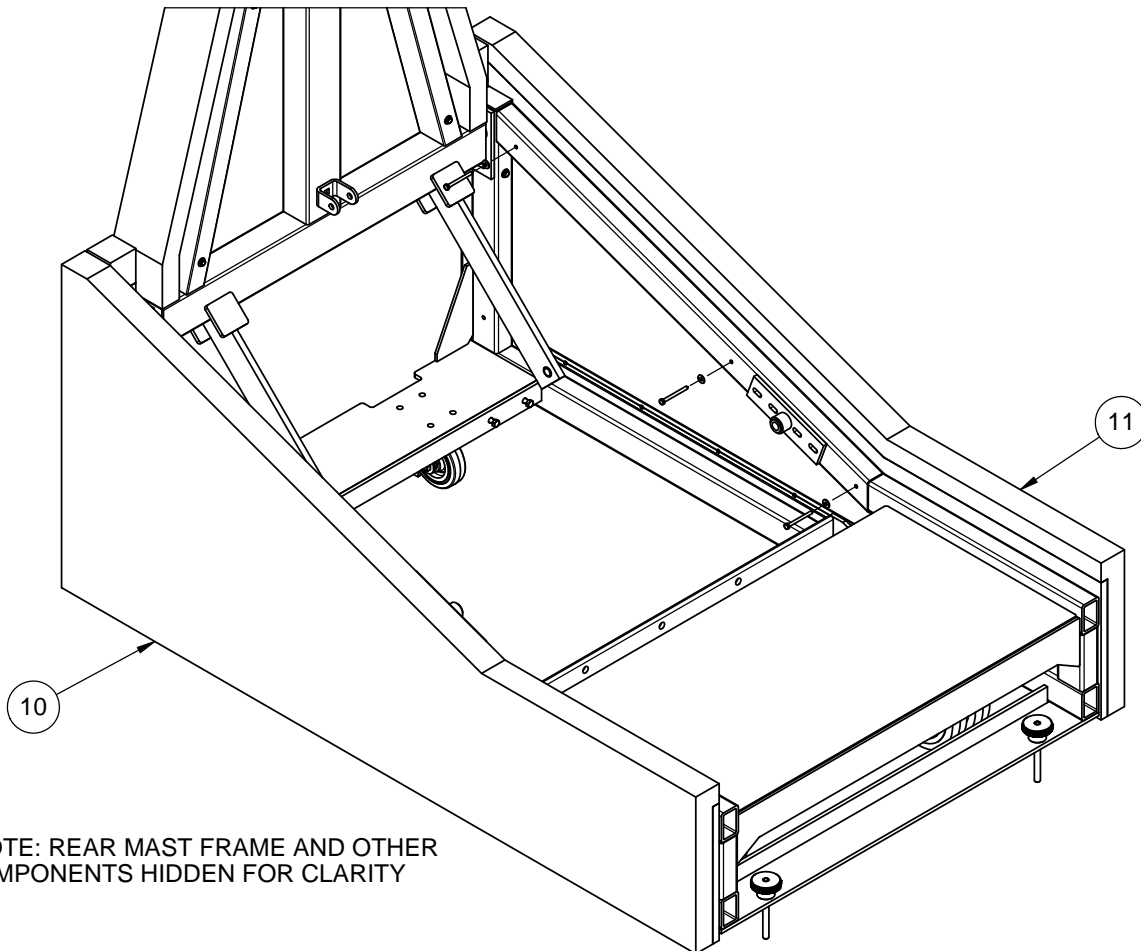
Attach each of the filler pads to the base frame using two (2) 1/4" x 4" long lag screws and 1/4" flatwashers provided. Determine the height of these pads by raising the goal to the 10' playing position and lining up the bottom face of the filler pads with the bottom face of the lower front pad.



Base Side Pads:

Start by attaching the z-strips to the sides of the base frame using seven (7) #12 x 7/8" long self drilling, self-tapping screws provided. The base frame is pre-drilled for ease of installation. Next, install a matching z-strip onto the base side pads using seven (7) #8 x 5/8" long pan head screws provided. Determine the height of the z-strips to align the bottom face of the side pads with the bottom face of the front pads; approximate measurements are shown below.

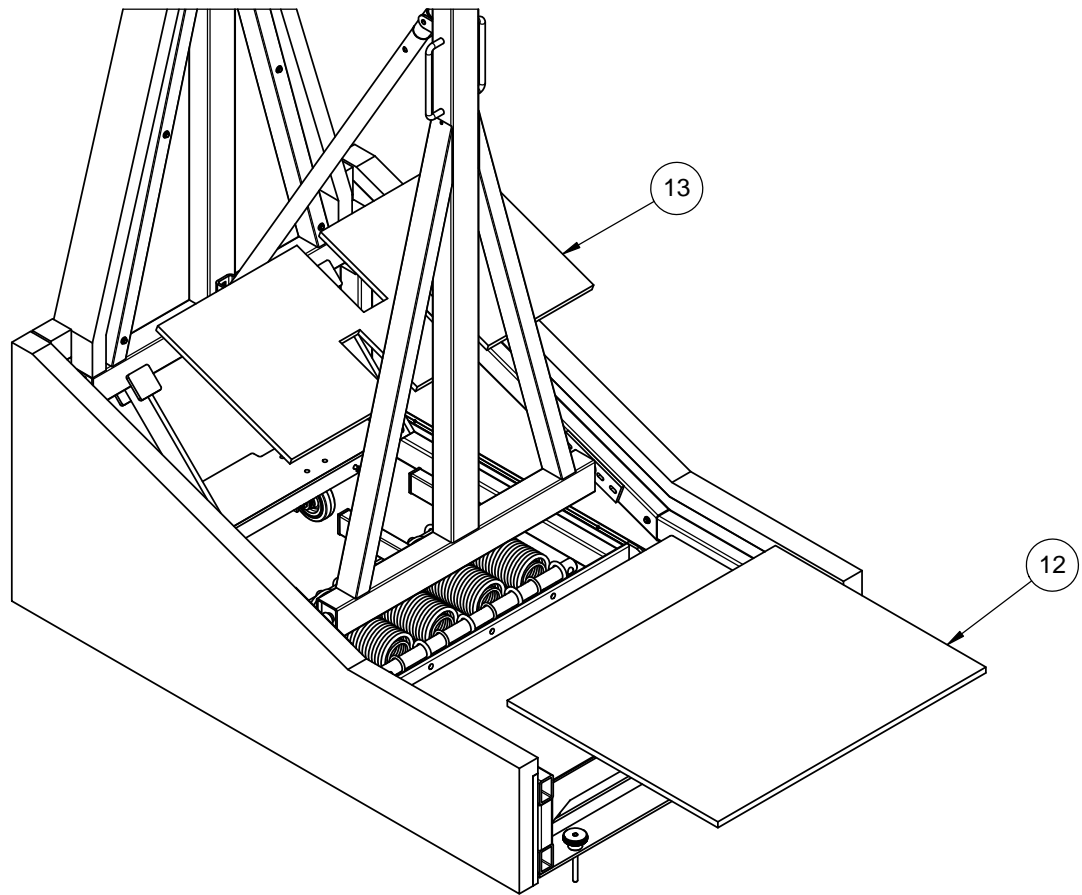




*NOTE: REAR MAST FRAME AND OTHER COMPONENTS HIDDEN FOR CLARITY

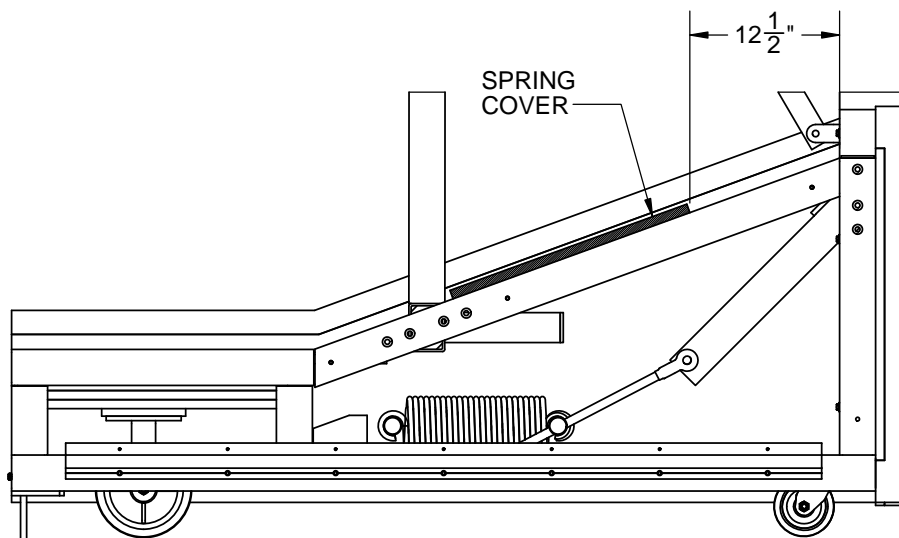
Base Side Pads (continued):

Mount the base side pads onto the base frame by raising the pad above the base-mounted z-strip and lowering the pad until the z-strip of the pad and base frame interlink. Secure the top of the base side pads using three (3) 1/4" x 3" long lag screws and 1/4" flatwashers provided.



Ballast and Spring Covers:

Mount the ballast cover to the top ballast plate using the Velcro® strips provided; the back edge of the ballast cover should be flush with the rear face of the base frame. Mount the spring cover on the side rails of the base frame as shown below using the Velcro® strips provided. After installing the spring cover, slowly lower and raise the unit to verify the spring cover is not placed in a position that interferes with the articulation of backstop.





www.porterathletic.com
888-277-7778

1135 Portable Basketball Backstop Installation, Operation, and Maintenance Manual Assembly & Setup

FINAL INSPECTION

Touch up any scratches that may have occurred during shipping or assembly with touch up paint

IMPORTANT – UPON FINAL SET-UP OF THIS BACKSTOP, SHOW THE INDIVIDUAL(S) WHO WILL OPERATE THIS BACKSTOP HOW TO PROPERLY OPERATE THIS BACKSTOP. READ THE WARNING LABELS TO THEM, EXPLAINING THE IMPORTANCE OF FOLLOWING SAFE OPERATING PROCEDURES. THIS INSTRUCTION MANUAL MUST BE GIVEN TO AN OFFICIAL IN CHARGE OF THE FACILITY FOR FUTURE REFERENCE.

THIS BACKSTOP MUST BE OPERATED ONLY BY AUTHORIZED PERSONNEL FAMILIAR WITH THE SAFE OPERATING INSTRUCTIONS AND PROCEDURES. THIS EQUIPMENT SHOULD BE INSPECTED BEFORE EACH USE FOR WEAR, LOOSE FITTINGS, DAMAGE AND PROPER STABILITY. CONSULT A TRAINED SERVICE TECHNICIAN OR THE FACTORY WHEN IN DOUBT.



WARNING

SINCE THE FOLDING ACTION OF THIS BACKSTOP IS SPRING-ASSISTED, A POTENTIAL HAZARD EXISTS IF PROPER SAFETY PRECAUTIONS ARE NOT FOLLOWED. WHEN REMOVING OR REPLACING THE BACKBOARD ON THIS BACKSTOP, THE TELESCOPING BRACE / THRU PIN MUST BE LOCKED IN POSITION, TO PREVENT THE BACKSTOP FROM SUDDENLY SPRINGING TO THE UP POSITION, WHICH COULD RESULT IN SEVERE INJURIES, OR EVEN DEATH. CONSULT FACTORY WHEN IN DOUBT.

OPERATING PROCEDURES

TO RAISE BACKSTOP TO PLAYING POSITION

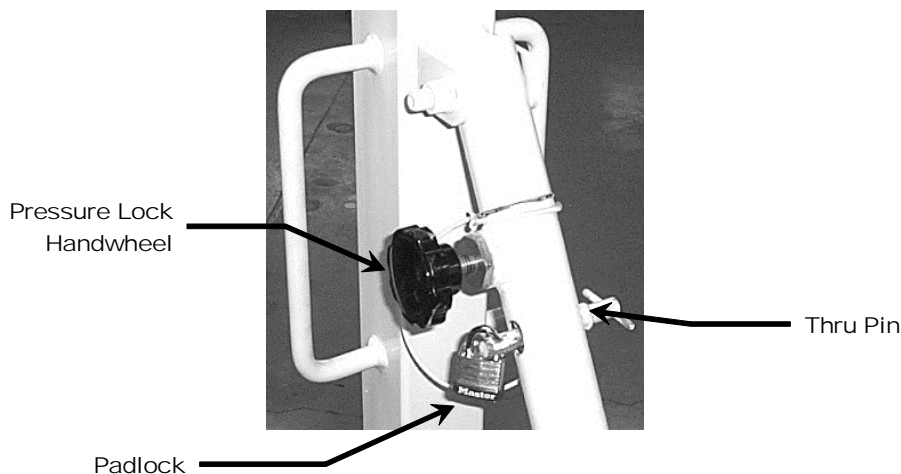
1. Roll to the playing position while backstop is in the folded and locked position.
2. Lower front leveling feet to lock backstop in place.
3. Loosen (turn counterclockwise) the pressure lock handwheel on the telescoping height adjustment brace.
4. Remove the padlock and thru pin in the telescoping height adjustment brace tube.
5. Clear all individuals from the floor area around the backstop. Stand to one side of the backstop, grasp handle on rear mast, then carefully and slowly lift upward on handle located near rear of backstop.
6. Slowly raise or push backstop to desired goal height setting (8', 9', or 10')
7. Replace thru pin and padlock.
8. Tighten handwheel in telescoping brace securely.
9. For competition use, secure rear of backstop to floor with tie-down knob (as specified by the NCAA rules for competitive use).

TO LOWER BACKSTOP FOR TRANSPORT/ STORAGE

1. Remove tie-down system (if applicable).
2. Loosen (turn counterclockwise) the pressure lock handwheel on the telescoping height adjustment brace.
3. Remove the padlock, and while grasping the side handle on the rear vertical support, remove the thru pin from the telescoping brace.
4. Stand to one side, grasp handle on rear mast, and slowly lower the backstop to the lowest down or storage position.
5. Replace thru pin and padlock in telescoping brace.
6. Tighten handwheel in telescoping brace securely.
7. Raise front leveling feet
8. Roll backstop to the storage location

IMPORTANT

ALWAYS KEEP PADLOCK IN THE LOCKED POSITION ON THE TELESCOPING HEIGHT ADJUSTMENT BRACE WHILE IN THE PLAYING OR STORAGE POSITIONS, TO PREVENT USE OF THIS BACKSTOP BY UNAUTHORIZED INDIVIDUALS, WHO ARE NOT FAMILIAR WITH THE SAFE OPERATION OF THE BACKSTOP.

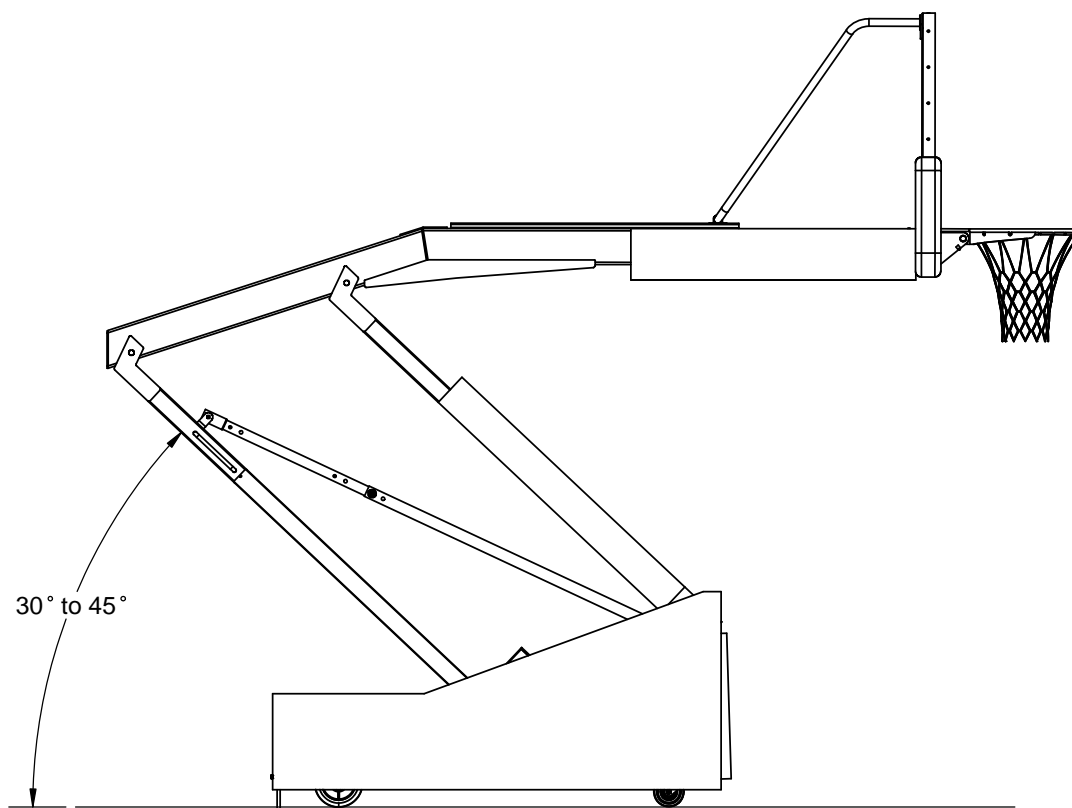


ADJUSTMENT OF SPRING-LOADED MECHANISM FOR EASE OF RAISING AND LOWERING BACKBOARD

The tension springs on this backstop have been pre-adjusted at the factory for proper raising and lowering of the backboard. However, should it be necessary to adjust the springs after years of use, or with the addition of a shot clock, the following adjustment procedures should be followed. As a safety precaution, it is advisable to check operation of backstop with two individuals (one standing on each side of the backstop) in the event of unexpected movement, or undue forces exerted by the backstop support mechanism. Refer to detail on page 16 for adjustment of tension springs.

WARNING – When making adjustment, the backstop must be in the up and locked position. Do not turn the adjustment nuts (C) more than two turns before trying operation of backstop, to avoid erratic or sudden movement, which may result in bodily injury or damage to the backstop. When checking folding action, keep all individuals clear of backstop and stand to one side while grasping handle.

Spring setting – For proper operation of this backstop, it is highly recommended that the spring tension be adjusted so backstop will be held in a static position with the vertical supports at an approximate 30° to 45° angle from the horizontal position. See detail below.



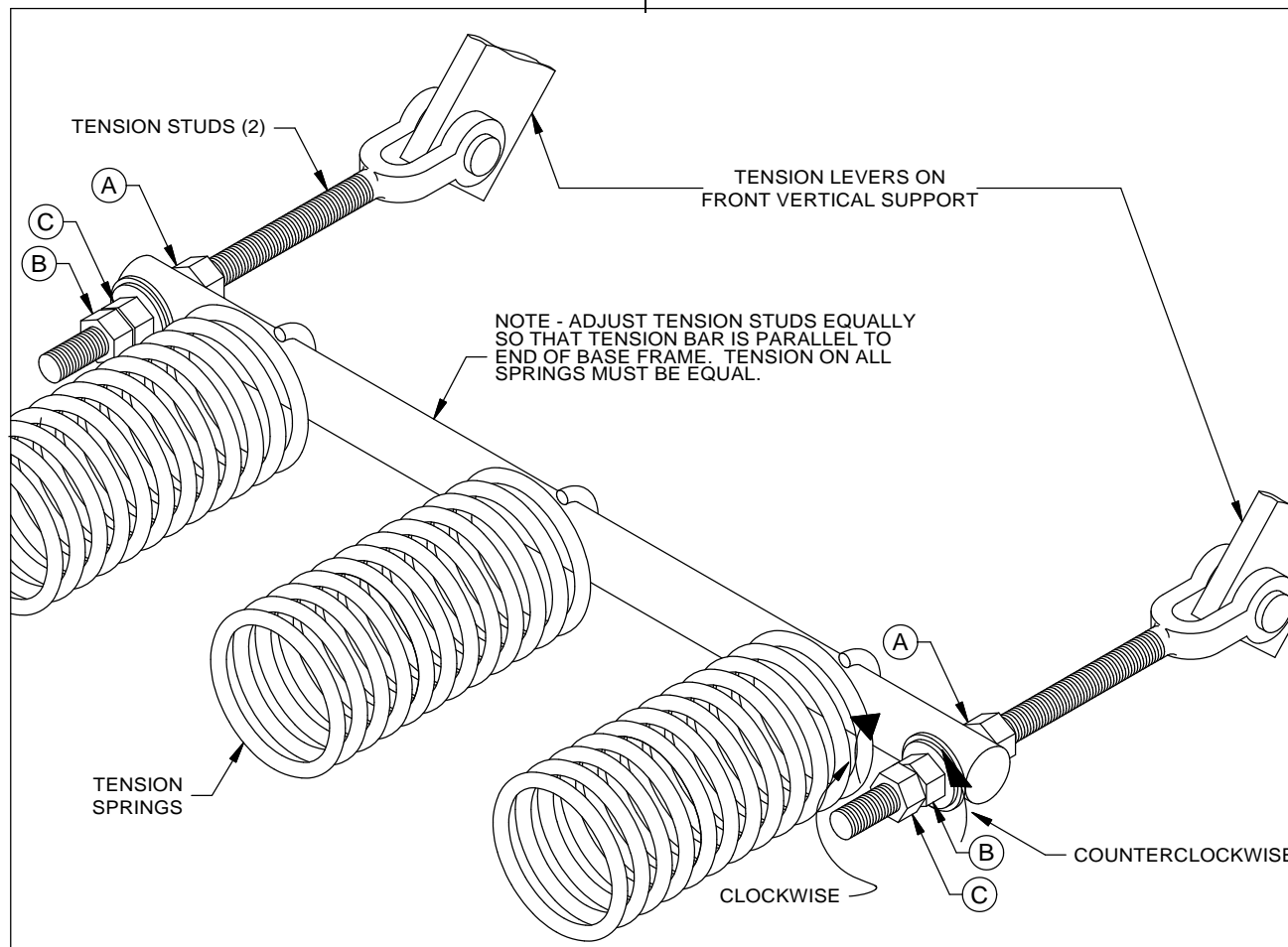
For proper operation, the backstop must be manually pushed to the full up (playing) position, or the full down (storage) position. Operate backstop slowly to prevent damage or injury.

DIFFICULTY IN RAISING BACKSTOP TO THE PLAYING POSITION (REFER TO DETAIL BELOW)

1. Loosen (turn clockwise) the two jam nuts (A) approximately six turns.
2. Loosen (turn counterclockwise) the two jam nuts (B) approximately one turn.
3. Loosen (turn clockwise) the two jam nuts (C) no more than two turns.
4. Carefully raise backstop to the playing position and check static position (refer to Detail "I" on page 17). Should it be necessary to tighten springs further, carefully raise backstop and lock it in the up position before proceeding.
5. Repeat steps No. 3 & 4 above until folding action of backstop functions properly.
6. Re-tighten jam nuts (A & B) securely to lock jam nut (C) in position after final adjustment has been made.

DIFFICULTY IN LOWERING BACKSTOP TO THE TRANSPORT / STORAGE POSITION (REFER TO DETAIL BELOW)

1. Loosen (turn clockwise) the two jam nuts (A) approximately one turn.
2. Loosen (turn counterclockwise) the two jam nuts (B) approximately six turns.
3. Loosen (turn clockwise) the two jam nuts (C) no more than two turns.
4. Carefully raise and lower backstop and check static position (refer to Detail "I" on page 17). Should it be necessary to loosen springs further, carefully raise backstop and lock it in the up position before proceeding.
5. Repeat steps No. 3 & 4 above until folding action of backstop functions properly.
6. Re-tighten jam nuts (A & B) securely to lock jam nut (C) in position after final adjustment has been made.





www.porterathletic.com
888-277-7778

**1135 Portable Basketball Backstop
Installation, Operation, and Maintenance Manual
Maintenance**

MAINTENANCE CHECKLIST

Perform a complete inspection of this portable backstop at least quarterly (every 3 months).

- Check entire backstop for structural integrity. Examine welds for soundness. Inspect all fittings and hardware - replace as required.
- Check all padding on portable backstop and on backboard.
- Check that tie down knobs and floor anchors are functioning properly and structurally sound.
- If a shot clock is installed, check that all hardware is properly tightened and support structure is structurally sound.



www.porterathletic.com
888-277-7778

**1135 Portable Basketball Backstop
Installation, Operation, and Maintenance Manual
Guarantee**

GUARANTEE

All materials and workmanship of basic materials are guaranteed to be free and clear of defects. Defective material will be repaired or replaced, at our option, subsequent to complete information being received by us concerning the nature of the defect, for a period of one year from the date of completion of the assembly/installation.

NAME OF DEALER:	NAME OF INSTALLATION COMPANY
PHONE #:	PHONE #:

Porter Order Number: _____

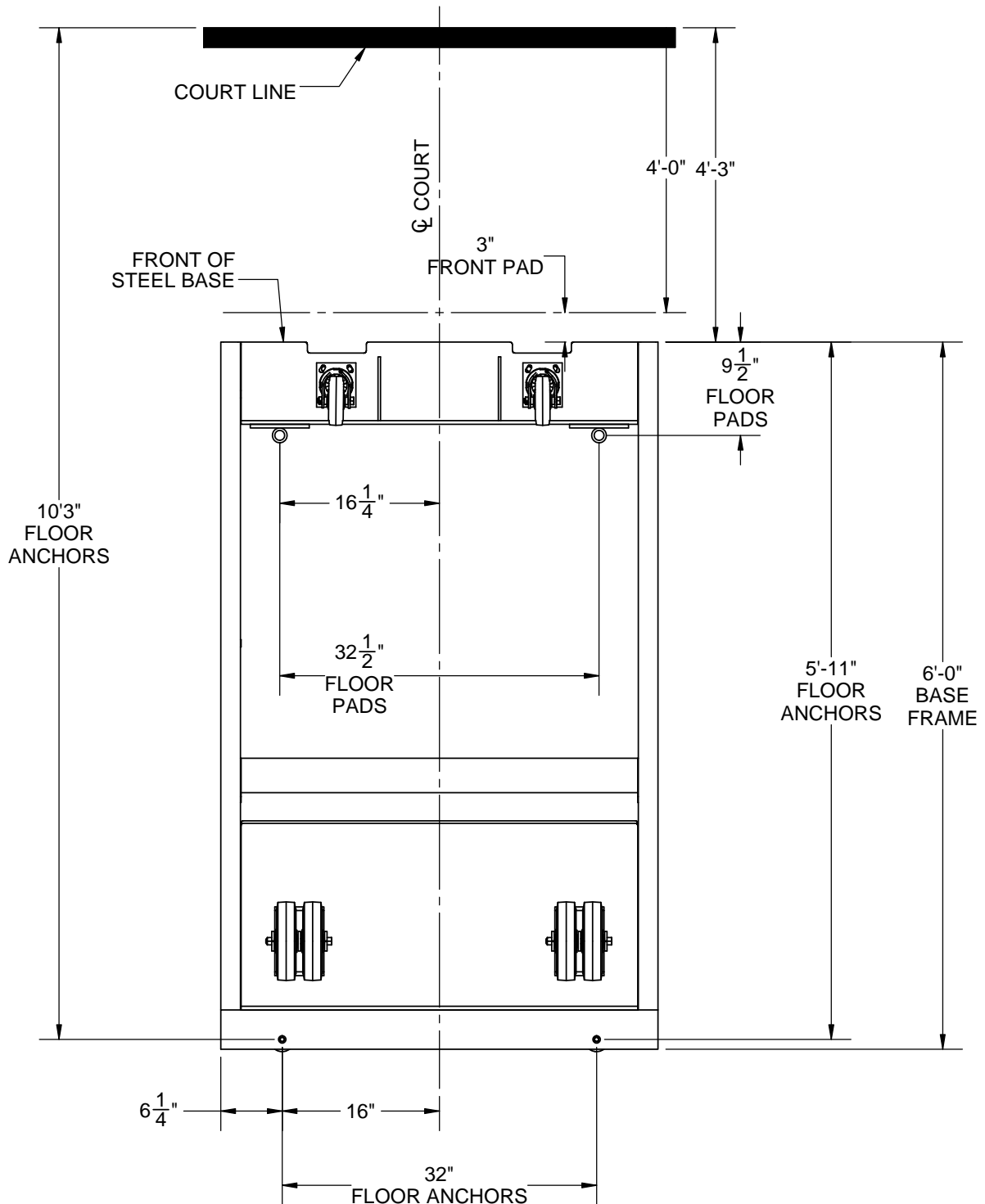
Date of Completion: _____

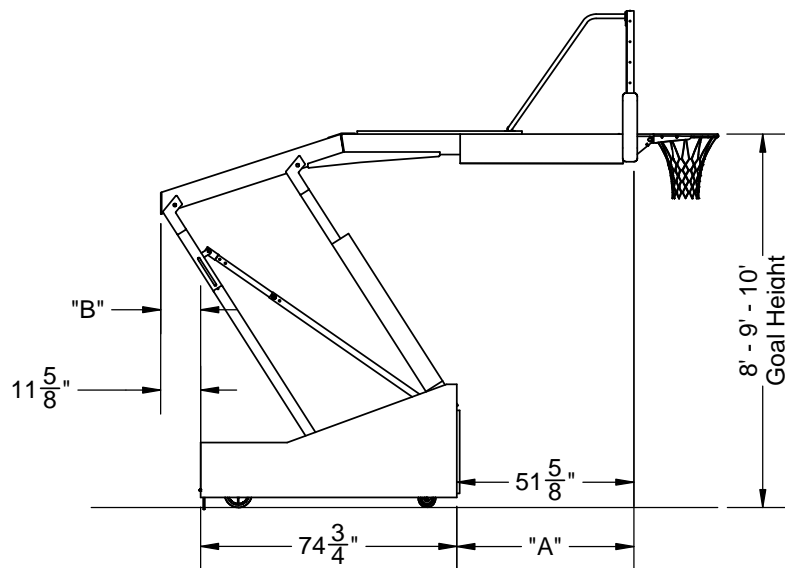
Care has been taken to fabricate and install this equipment to provide years of safe, satisfactory use and trouble-free service. The key to satisfactory service from this equipment is proper operation and care. Should any malfunctions occur, please notify your supervisor and call your local Porter Dealer or Representative.

THIS WARNING IS GIVEN IN COMPLIANCE
WITH CALIFORNIA'S PROPOSITION 65:

WARNING

This product contains chemicals known to the
State of California to cause cancer, birth defects
or other reproductive harm.





GOAL HEIGHT SETTING			
	10'	9'	8'
A	8'	4'-3 1/2"	3'-11 1/2"
B	N/A	11-3/4"	2'-3 1/2"

