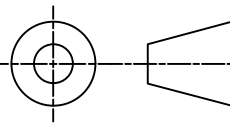

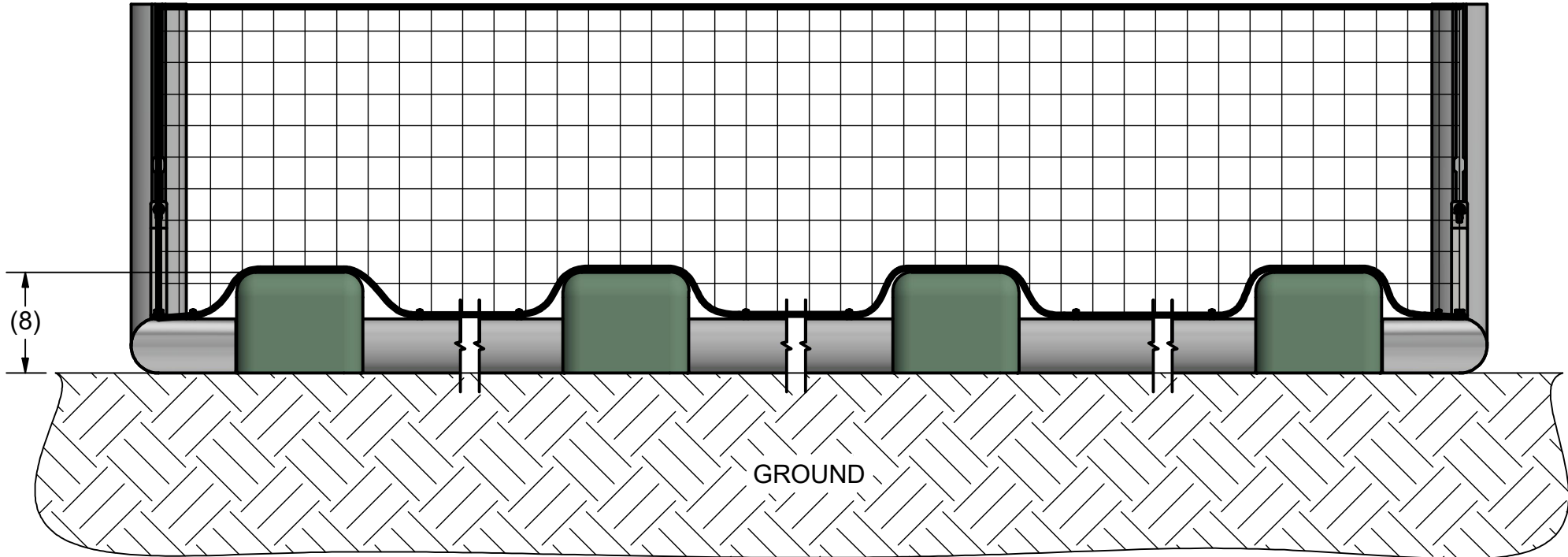


FEATURES:

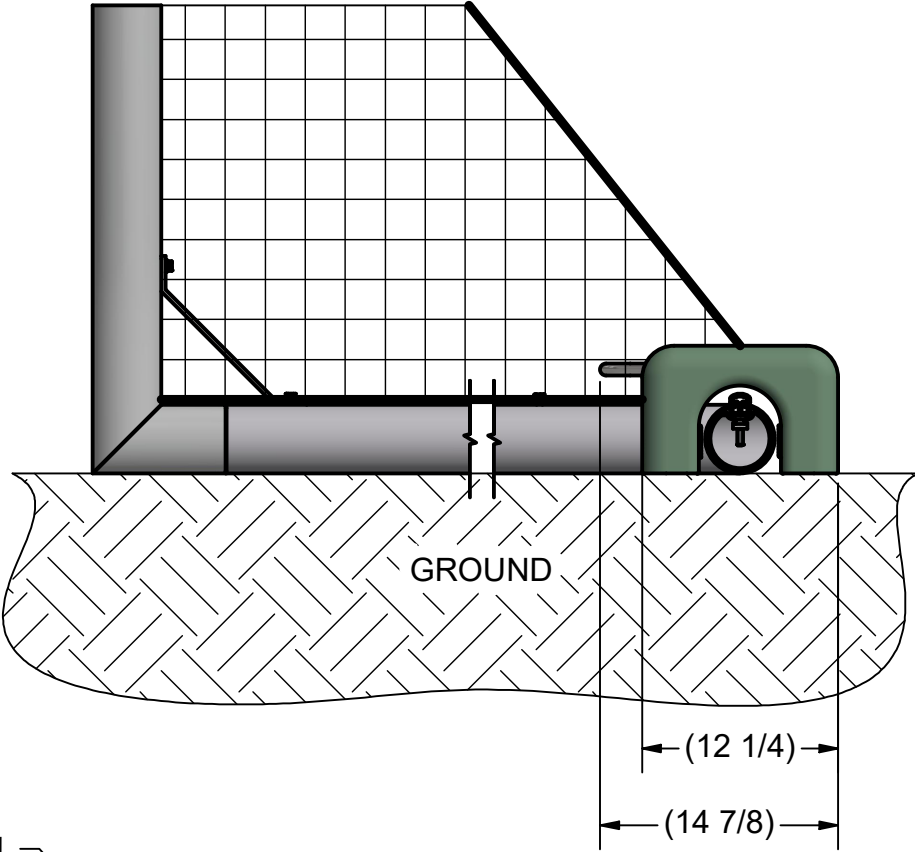
- 1) USE: SOCCER GOALS
PRO PREMIER / EVOLUTION / FUSION / DELUXE EUROPEAN CLUB / ACADEMY
- 2) MATERIAL:
CONCRETE / STEEL - WEIGHT
RUBBER - ANCHOR PAD
- 3) FINISH:
WEIGHT - PAINTED GREEN / PLAIN STAINLESS STEEL
ANCHOR PAD- ADHESIVE BACK
- 4) INCLUDED:
WEIGHT (4)
ANCHOR PAD (8)
- 5) ASSEMBLED WEIGHT: 240 LBS.

 THIRD ANGLE PROJECTION DIMENSIONS ARE IN INCHES UNLESS OTHERWISE SPECIFIED This item is the confidential property of KWIK GOAL LTD. Reproduction or duplication without the express written consent of KWIK GOAL LTD. is strictly forbidden.	 KWIKGOAL ® 140 Pacific Drive Quakertown, Pa. 18951	
	Approved By:	Drawing #: 10B4608
	Date:	
	Drawn By: CSpeck	Desc: GOAL ANCHOR WEIGHTS
	Date: 4/12/2021	
	Sheet: 1 of 3	
Revision #:		
Cad File: 10B4608.idw		

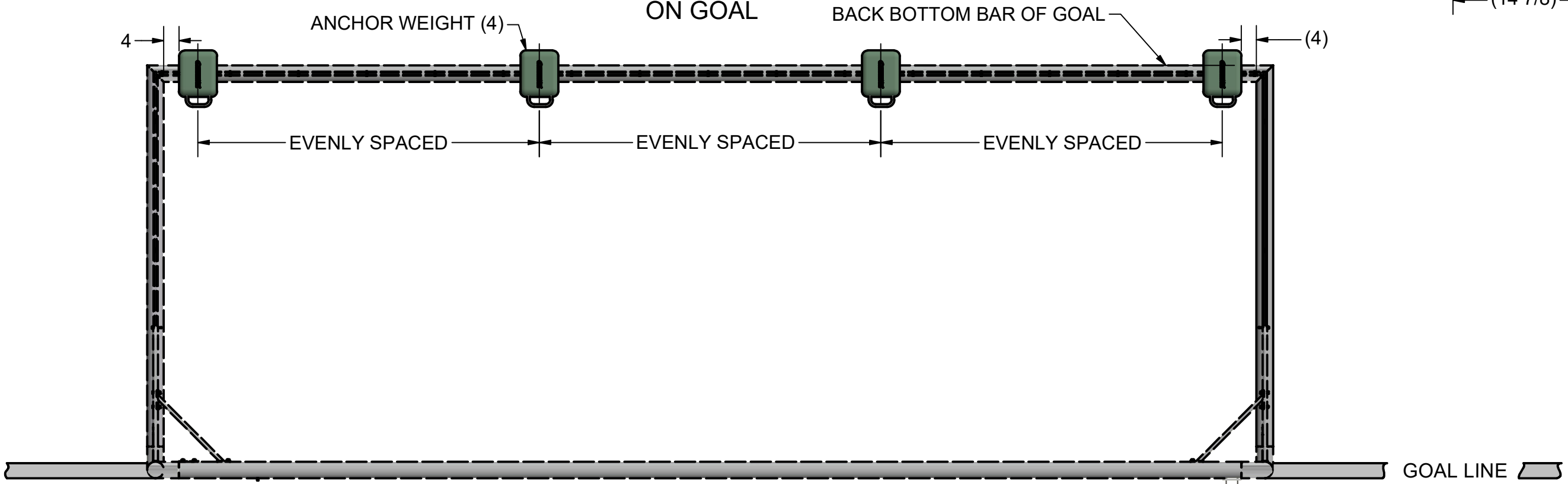
REAR VIEW
ON GOAL



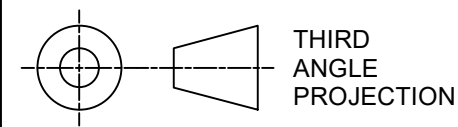
SIDE VIEW
ON GOAL



OVERHEAD VIEW
ON GOAL



NOTES:
1) SOCCER GOAL SHOWN IS PRO PREMIER AND IS NOT INCLUDED



THIRD
ANGLE
PROJECTION

DIMENSIONS ARE IN INCHES
UNLESS OTHERWISE SPECIFIED

This item is the **confidential**
property of **KWIK GOAL LTD.**
Reproduction or duplication
without the express written
consent of **KWIK GOAL LTD.**
is **strictly forbidden.**



140 Pacific Drive
Quakertown,
Pa. 18951

Approved By:

Date:

Drawn By: CSpeck

Date: 4/12/2021

Sheet: 2 of 3

Revision #:

Cad File: 10B4608.idw

Drawing #:

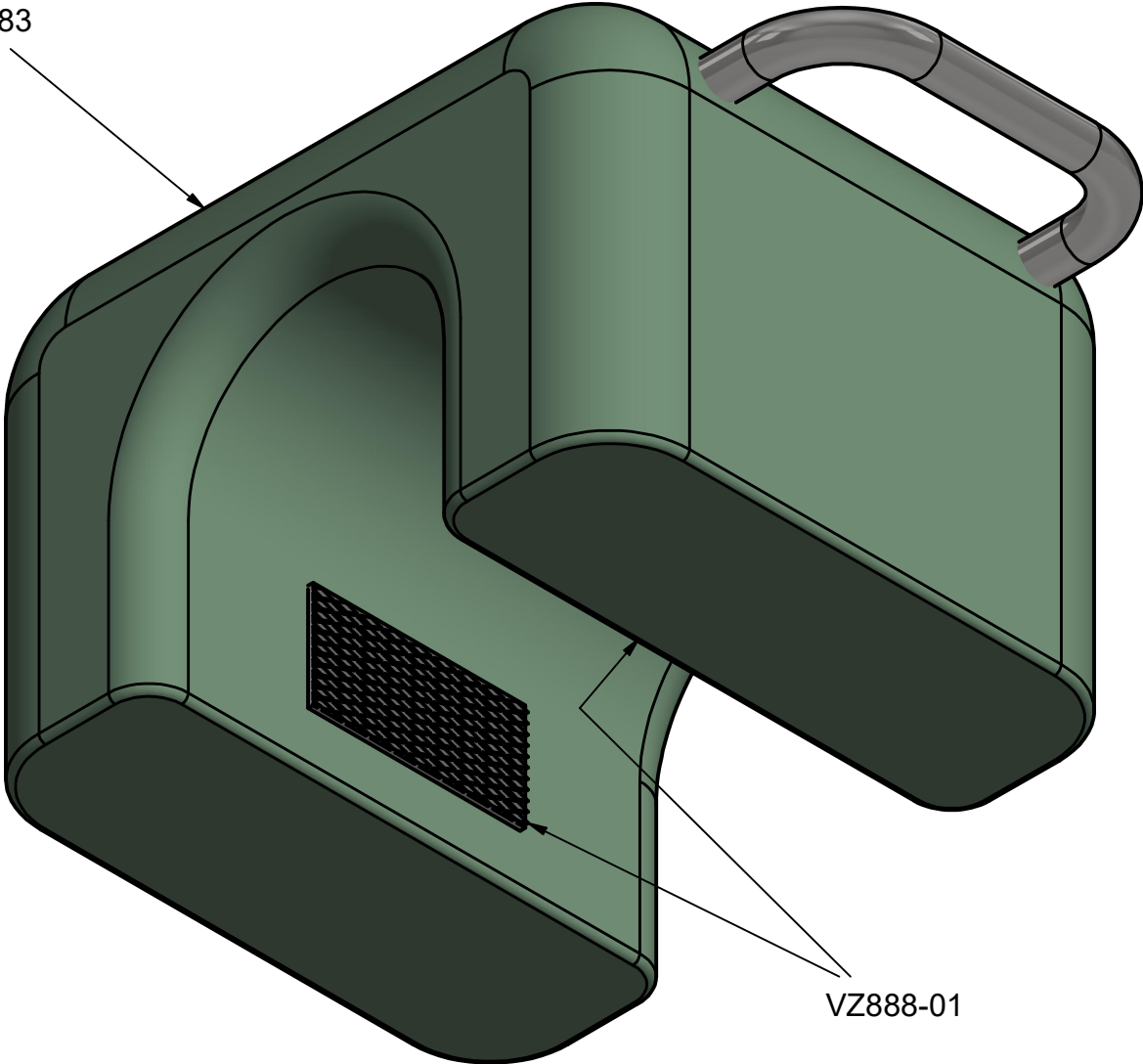
10B4608

Desc:

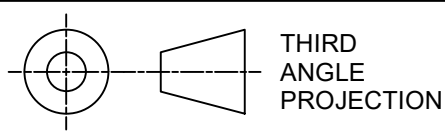
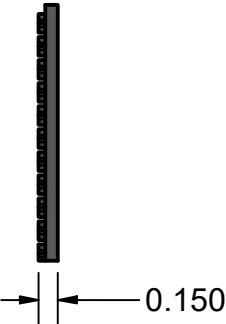
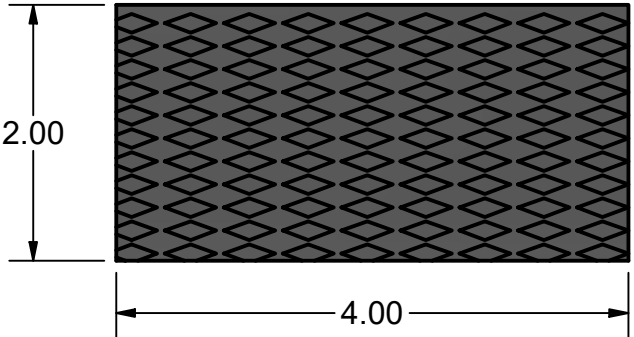
GOAL ANCHOR WEIGHTS

PARTS LIST		
PART#	QTY	DESCRIPTION
UZ1683	4	GOAL ANCHOR WEIGHT
VZ888-01	8	2" x 4" ADHESIVE BACKING BLACK RUBBER PAD

UZ1683



VZ888-01
MATERIAL - RUBBER



DIMENSIONS ARE IN INCHES
UNLESS OTHERWISE SPECIFIED

Approved By:

Drawing #:

Date:

10B4608

This item is the **confidential**
property of **KWIK GOAL LTD.**
Reproduction or duplication
without the express written
consent of **KWIK GOAL LTD.**
is **strictly forbidden.**

Drawn By: CSpeck

Desc:

Date: 4/12/2021

GOAL ANCHOR WEIGHTS

Sheet: 3 of 3

Revision #:

Cad File: 10B4608.idw