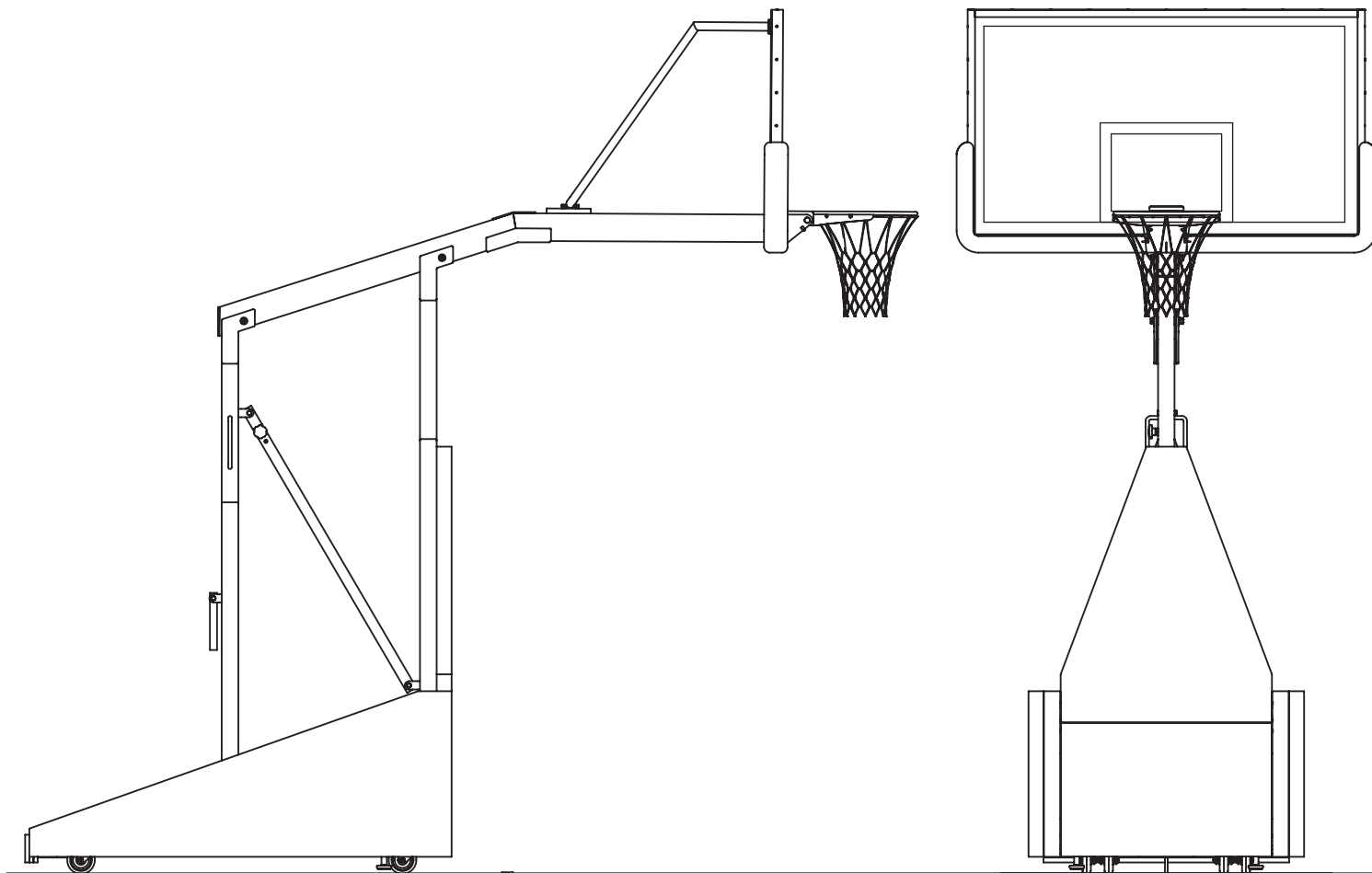




www.porterathletic.com
888-277-7778

735 Portable Basketball Backstop Installation, Operation, and Maintenance Manual



INSTALLER NOTE:

**UPON COMPLETION OF THE INSTALLATION/ ASSEMBLY OF THIS PORTABLE BACKSTOP,
MAKE SURE THIS INSTRUCTION MANUAL IS IN POSSESSION OF THE OWNER OR
FACILITY MANAGER, TO SAVE FOR FUTURE REFERENCE.**



www.porterathletic.com
888-277-7778

735 Portable Basketball Backstop Installation, Operation, and Maintenance Manual

Dear Customer:

Congratulations on purchasing the Porter No. 735 Height-Adjustable Portable Basketball Backstop. This quality built backstop features the unique Porter Center-Strut design, height settings for all age groups, and effortless spring-assisted folding action.

This booklet is intended to be used for the initial set-up of your No. 735 backstop, and as a guide for the safe use and maintenance of the backstop. **PLEASE READ THESE INSTRUCTIONS CAREFULLY AND COMPLETELY BEFORE BEGINNING THE SET-UP WORK, OR MAINTENANCE, OF THIS BACKSTOP.**

If, after reviewing this manual, you have any questions, please feel free to consult our factory.



Porter Athletic Equipment Company
601 Mercury Drive, Champaign, IL U.S.A., 61822
Phone: (888) 277-7778 • Fax: (217) 239-2255
www.porterathletic.com



www.porterathletic.com
888-277-7778

735 Portable Basketball Backstop Installation, Operation, and Maintenance Manual

TABLE OF CONTENTS

	ITEM / DESCRIPTION	PAGE #
	Parts List	4
Operation and Maintenance	Warnings on Misuse of Portable Backstops	5
	Operating Procedures	16
	Maintenance Check List	19
Assembly and Set-up	WARNING – Do Not Remove Shipping Clamp	6
	Assembly of Backboard, Goal and Swaybraces	7
	Remove Shipping Clamp At This Time	8
	Adjustment of Goal Height	10 - 11
	Assembly of Padding and Enclosure Panels	12 - 14
	Assembly of Backboard Padding	15
	Final Inspection	15
	Adjustment of Spring-Loaded Mechanism	17 - 18
Installation and References	Locating Portable Backstops on Playing Floor	9
	Floor Anchor Locations for use with Tie-Down System	20
	Storage Dimensions	21
	Guarantee	22



www.porterathletic.com
888-277-7778

735 Portable Basketball Backstop Installation, Operation, and Maintenance Manual

FRAME COMPONENTS

Item #	Part #	Quantity	Description
1	00208000	1	Glass Backboard - 3'-6" x 6'-0"
2	00326999	1	Pro-Pad Backboard Padding
3	FRME00735050	1	Backstop Frame Assembly
4	SWAY20000	1	Swaybrace With Hardware
5	FEET00045	2	Locating/ Height Adjustment Feet
6	HAN00110	1	Tie Down Knob
7	236054	1	Ultra-Flex II Goal

PAD SET

Item #	Part #	Quantity	Description
8	ZMAT10734200	1	Mast Pad Assembly
9	ZMAT10734120	2	Base Front Filler Pad
10	ZMAT10734111	1	Base Side Pad - Left
11	ZMAT10734116	1	Base Side Pad - Right
12	PAD73505	2	Base Enclosure Panel
13	HDWE061080E0	8	1/4" X 3" Lag Screw
14	HDWE060200E0	9	1/4" X 4" Lag Screw
15	HDWE050030E0	17	1/4" Flatwasher

TOOLS REQUIRED:

9/16" Wrench

Stepladder

Portable Drill With Clutch Adjustment

Tape Measure

Level

5/16" Socket (1/4" Drive)

WARNING

DANGER / WARNING ON MISUSE OF PORTABLE BACKSTOPS (Published in Compliance with NCAA Comments on the Rules of Basketball)

Read all warnings thoroughly before using this equipment. Failure to comply with the following instructions and warnings may result in serious injuries and/or property damage.

A high degree of injury potential and severe liability problems exist when players or spectators are allowed to hang, sit or stand on the goal, backboard or support structure.

This equipment is NOT designed for adding weight to the goal or backboard. Please do not climb on the goal, backboard or support structure.

Administrators are cautioned that this practice be eliminated and that portable backstops are lowered immediately after the completion of each game. There is a high risk of severe injury or even death if these instructions are not strictly followed.

The use of a floor tie-down system for all competition games is mandatory and is the responsibility of game management and the personnel responsible for the facility.

This backstop must be operated only by authorized adult personnel familiar with the safe operating instructions and procedures as described in this operating manual. Read and refer to all operating instructions before attempting to operate this backstop.

CAUTION – The following steps must be observed to provide the safe operation of this portable backstop:

- Do not roll this backstop on the floor unless it has been fully lowered to the storage/transport position.
- Before moving this backstop in the storage/transport position, check to ensure that the thru pin locking mechanism is fully engaged through the telescoping brace and is padlocked in place.
- When raising or lowering this backstop, stand to one side and keep all individuals clear from beneath backstop (front and back), and grasp only by the side handles.
- Keep hands and feet away from all pinch or crush points.
- When raising or lowering this backstop to the playing or storage/transport position, move backstop slowly to avoid tipping or damage to the structure.
- Padlock telescoping brace thru pin in any playing or storage position (see OPERATING PROCEDURES on page 5) to avoid tampering, vandalism, or use by unauthorized individuals.
- Inspect this equipment for wear, loose fittings, damage and proper stability before each use. Consult a trained service technician or the factory when in doubt.

THE OWNER OF THIS EQUIPMENT IS RESPONSIBLE TO ENSURE THAT ALL INDIVIDUALS FOLLOW THESE SAFETY AND OPERATING INSTRUCTIONS TO AVOID INJURIES OR PROPERTY DAMAGE. PROPER USE AND SUPERVISION OF THIS EQUIPMENT IS ESSENTIAL TO HELP REDUCE THE POSSIBILITY OF ACCIDENTS OR INJURIES.

IMPORTANT

FILE THIS ASSEMBLY, ADJUSTMENT, OPERATION & MAINTENANCE MANUAL IN A SAFE LOCATION FOR FUTURE REFERENCE, TO AVOID INJURIES OR PRODUCT DAMAGE WHEN REPLACING A BACKBOARD, OR PERFORMING OTHER NECESSARY MAINTENANCE.

ASSEMBLY AND SET-UP

WARNING

THE SPRING-ACTIVATED MECHANISM ON THIS BACKSTOP MAY BE EXTREMELY DANGEROUS IF THESE ASSEMBLY INSTRUCTIONS AND OPERATING PROCEDURES ARE NOT FOLLOWED STEP-BY-STEP. **UNDER NO CIRCUMSTANCES SHOULD THE SHIPPING CLAMP (SEE DETAIL BELOW) BE REMOVED BEFORE THE BACKBOARD, GOAL, AND SWAYBRACES ARE ASSEMBLED TO THE BACKSTOP. FAILURE TO FOLLOW THIS PROCEDURE COULD RESULT IN PROPERTY DAMAGE, INJURIES, OR EVEN DEATH.** A MINIMUM OF THREE ADULTS (TO HOLD AND MOUNT BACKBOARD) ARE REQUIRED, FOR PROPER AND SAFE ASSEMBLY OF THIS BACKSTOP.



ASSEMBLY OF BACKBOARD, GOAL AND SWAYBRACES

⚠ NOTE

CAUTION – DURING ASSEMBLY OF THIS BACKSTOP, IT IS OF EXTREME IMPORTANCE THAT THE BACKBOARD IS NOT DROPPED, IMPROPERLY TORQUED (BOLTS TIGHTENED BEFORE PLUMBING ALL ATTACHMENT POINTS), OR THE GLASS SECTION BE ALLOWED TO CONTACT OR STRIKE METAL PARTS. THE WARRANTY DOES NOT COVER BREAKAGE DURING INSTALLATION.

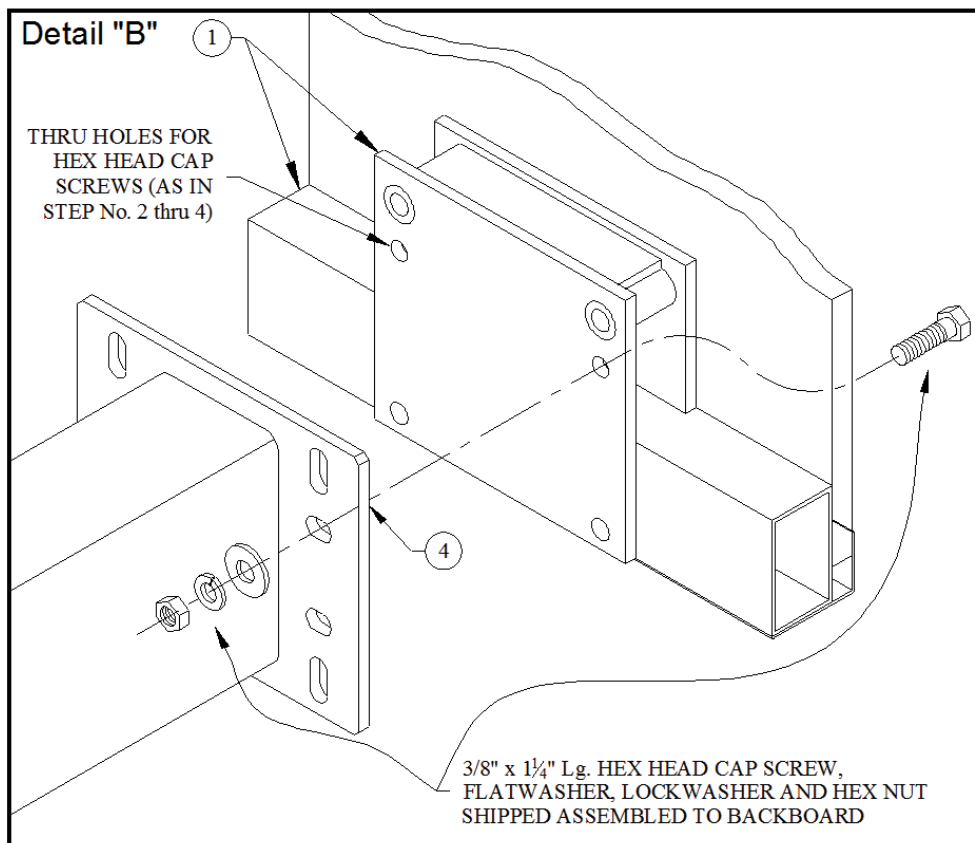
1. Unpack and identify all parts.
2. Position the unpacked glass backboard (#1) on its cardboard packing carton in front of portable backstop frame assembly (#4). Remove two 3/8" x 1-1/4" hex head cap screws, flatwashers, lockwashers and hex nuts from back of glass backboard. Save this hardware for Steps No. 3 and 4.

3. Install the two 3/8" x 1-1/4" hex head cap screws from Step No. 2 into the thru holes in the backside of the glass backboard. Secure them in place temporarily with tape or crumpled paper at the head of the screws.

4. This step requires at least three adults – two to lift the backboard, and one to install the hardware. Carefully lift the backboard into place and secure it to the mounting plate on the backstop frame assembly. Secure with the flatwashers, lockwashers and hex nuts from Step No. 2. Do not fully tighten hardware yet.

This hardware allows for independent installation and removal of the goal, without disturbing the backboard.

5. Install goal to backboard and backstop frame assembly. Follow instructions and use hardware that is supplied with the goal. Backboard may have to be shifted slightly for proper alignment. Do not fully tighten hardware yet.



6. Lay a level across the top of the backboard. Align backboard and securely tighten the two (2) 3/8" x 1-1/4" bolts mounted through the backstop mounting plate into the backboard (from Step No. 4). Level goal and tighten four (4) bolts through goal.
7. Check to ensure that all hardware securing the backboard and goal to the backstop frame assembly are fully tightened.
8. Attach swaybraces to backboard and backstop frame at this time. Use instructions included with swaybraces.



www.porterathletic.com
888-277-7778

735 Portable Basketball Backstop Installation, Operation, and Maintenance Manual

REMOVE SHIPPING CLAMP AT THIS TIME

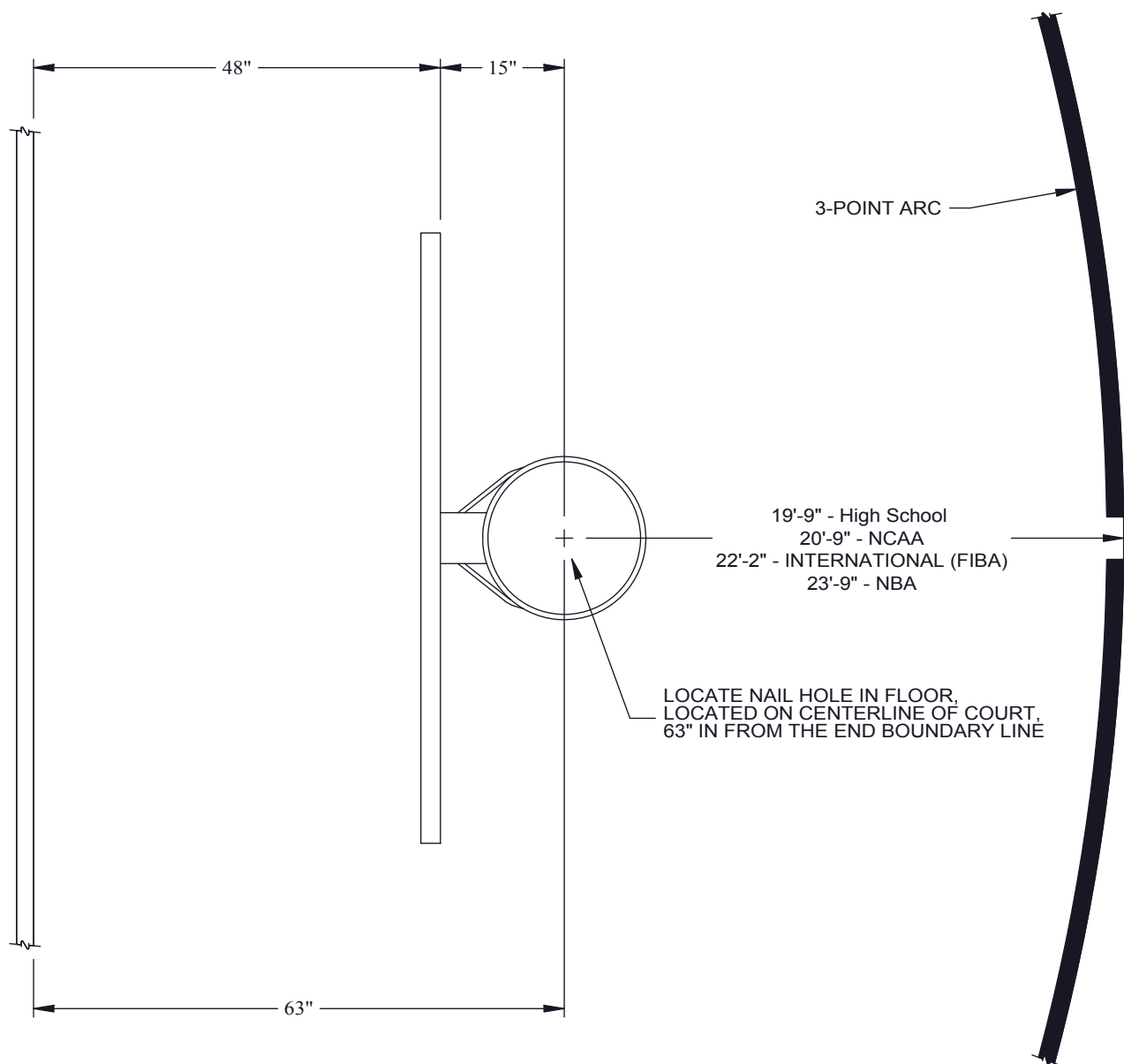
1. Keeping all individuals clear from beneath the backstop (front and back), from the side carefully loosen threaded rods and remove shipping clamps at this time. See detail on page 8.
2. Folding cycle of the backstop should be checked at this time – ***PROCEED WITH CAUTION.***

Remove the padlock and locking pin from the telescoping brace; also loosen the pressure lock handwheel slightly. See detail on page 5. Keeping all individuals clear from beneath the backstop (front and back), stand to one side of the rear of the base. Grasp the handle on the rear vertical support and slowly lift backstop into playing position.

CAUTION – WHEN RAISING THIS BACKSTOP INTO THE PLAYING POSITION, OR LOWERING THIS BACKSTOP INTO THE STORAGE POSITION, OPERATE BACKSTOP SLOWLY TO AVOID TIPPING OR DAMAGE TO THE STRUCTURE. OPERATE UNIT UP AND DOWN SEVERAL TIMES TO CHECK OPERATION. NEVER MOVE THE BACKSTOP FROM PLACE TO PLACE UNLESS THE BACKSTOP IS IN THE LOCKED-DOWN STORAGE POSITION!

3. With the backstop locked in the down or folded position, roll the backstop into the approximate playing position.
4. Raise the backstop to the playing position and align the face of the backboard parallel to and 4'-0" in from the inside edge of the 2" wide court line.
5. Lower front leveling feet when the backstop is properly positioned, to prevent it from rolling on the floor.
6. Using a stepladder, lay a level vertically on the face of the backboard. Shift the clamp assembly at the bottom end of the swaybraces forward or backward as required, to properly plumb the backboard. Tighten all hardware at both ends of swaybraces securely, to hold backboard in position.

LOCATING PORTABLE BACKSTOPS ON PLAYING FLOOR

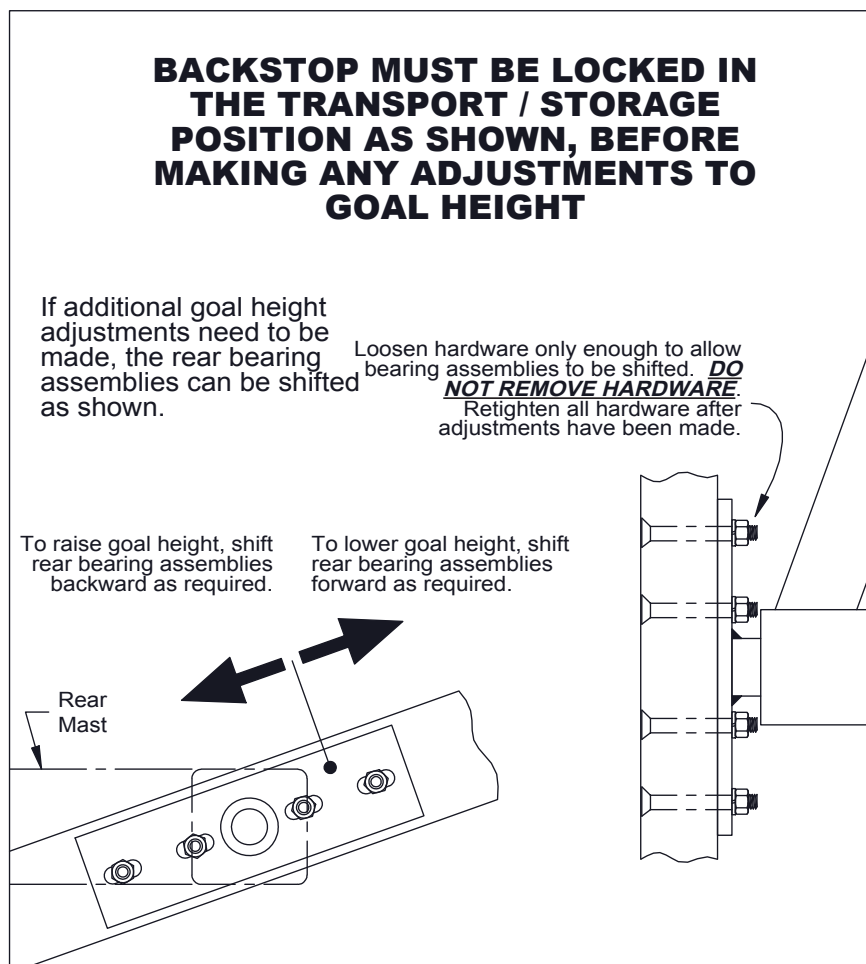


TO PROPERLY LOCATE A PORTABLE UNIT ON THE PLAYING FLOOR, DROP A PLUMB LINE FROM THE EXACT CENTER OF THE GOAL AND POSITION UNIT TO ALIGN WITH NAIL HOLE ON FLOOR. SHIFT BASE FROM SIDE TO SIDE AS REQUIRED TO CENTER ON COURT.

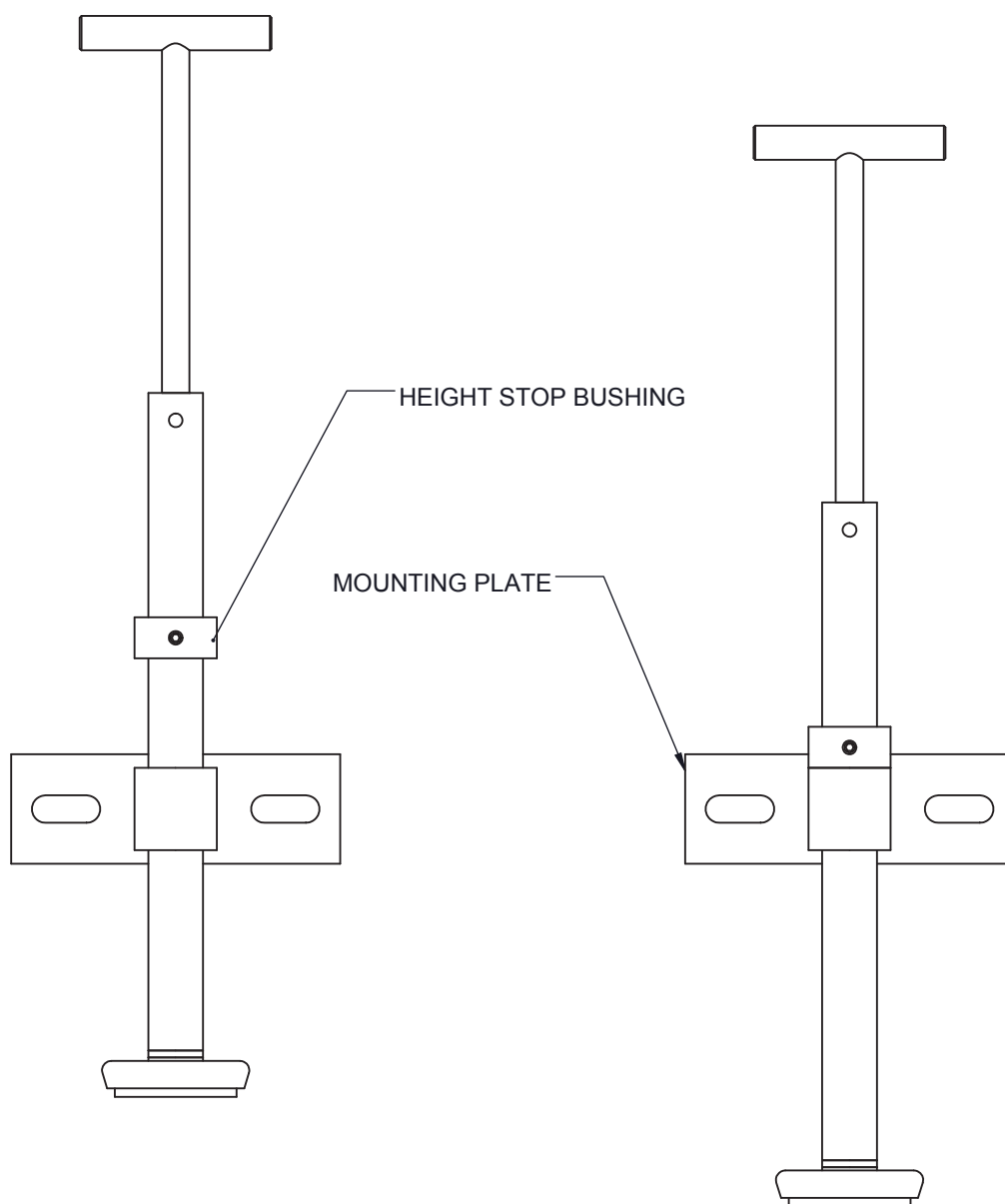
ADJUSTMENT OF GOAL HEIGHT

With the backstop in the playing position, the goal should be 10'-0" +/- 1/8" above the playing surface. If adjustments to the goal height are necessary (goal is too low or too high), proceed according to the steps and details below. **NOTE – THE BACKSTOP MUST BE LOCKED IN THE TRANSPORT / STORAGE POSITION BEFORE ANY ADJUSTMENTS ARE MADE.**

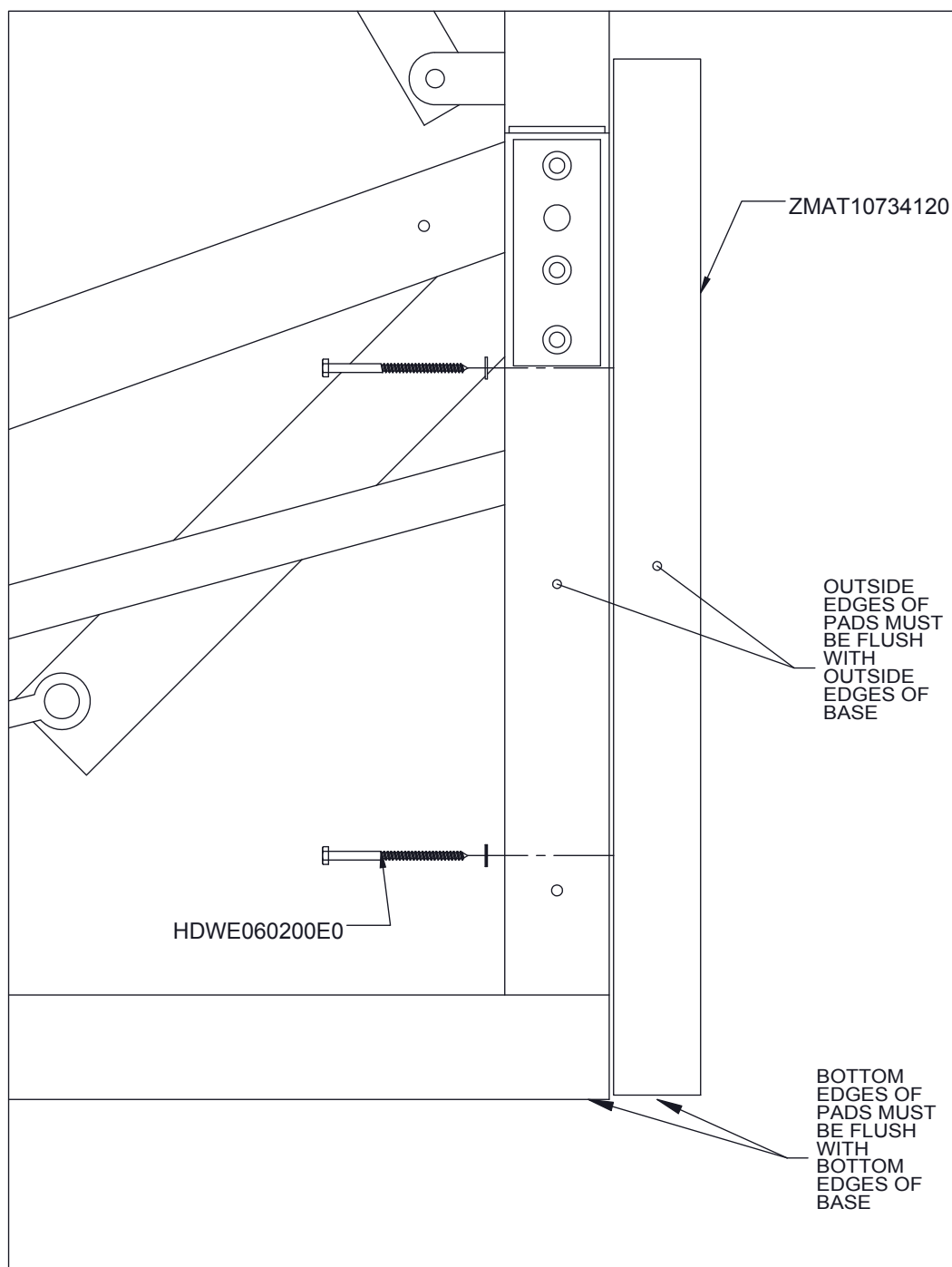
1. Begin by making adjustments at the REAR bearing assemblies first (at the lower end of the rear mast). See detail below. To raise the goal height, the rear bearing assemblies must be shifted backward. To lower the goal height, the rear bearing assemblies must be shifted forward. Loosen the hardware only enough to allow the bearing assemblies to be shifted. **DO NOT REMOVE THIS HARDWARE.** Shift both bearing assemblies as required, then retighten the hardware. Unlock the backstop, raise it to the playing position, and check the goal height. Repeat this process until the 10'-0" +/- goal height is achieved. When all adjustments are completed, make sure the hardware that secures the bearing assemblies to the base has been securely retightened. See detail below.
2. If after performing the above procedure, the goal height is still too high or too low, proceed to Step 3 on the next page.



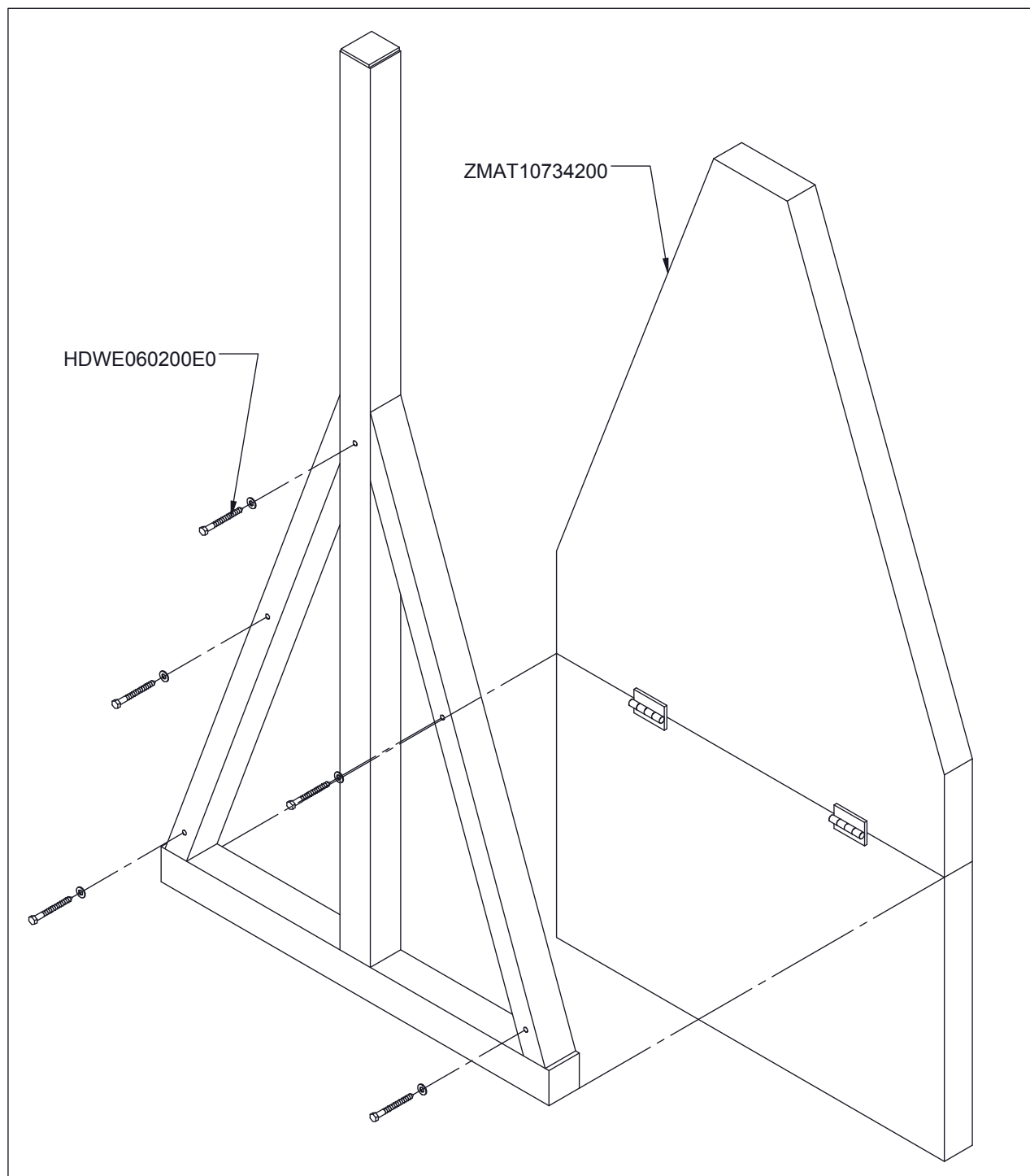
3. If necessary, additional adjustments can be made at the front leveling feet. Loosen the set screw holding the bushing in place. Raise or lower leveling feet equally until the 10'-0" +/- goal height is achieved. While goal is at proper height, slide bushings with set screw down acme rod until it bottoms out on mounting plate. Tighten set screw to lock bushing in place. Leveling feet should always be lowered until they touch this bushing to achieve proper 10'-0" playing height consistently.



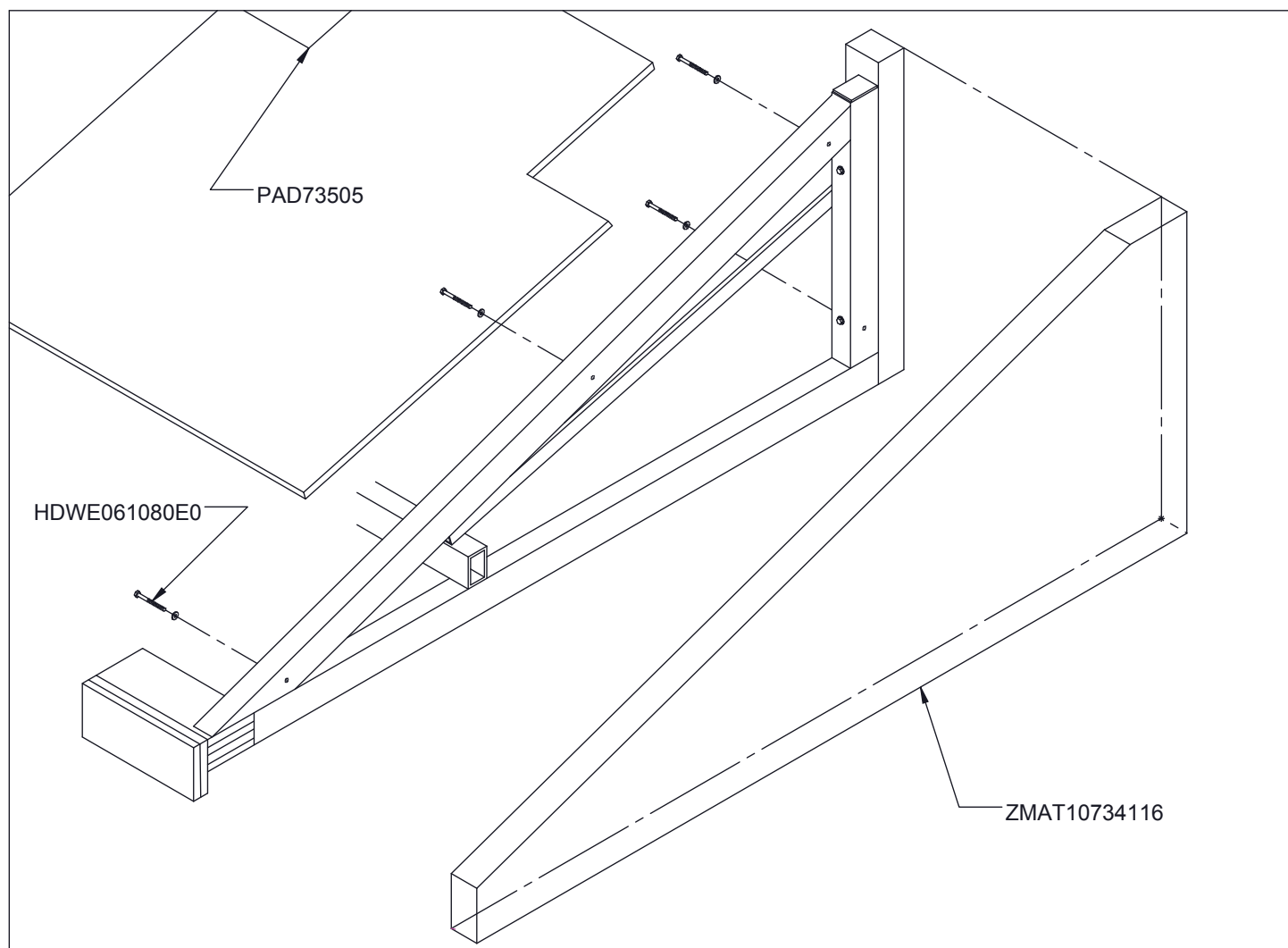
ASSEMBLY OF PADDING AND ENCLOSURE PANELS



ASSEMBLY OF PADDING AND ENCLOSURE PANELS



ASSEMBLY OF PADDING AND ENCLOSURE PANELS





www.porterathletic.com
888-277-7778

735 Portable Basketball Backstop Installation, Operation, and Maintenance Manual

ASSEMBLY OF BACKBOARD PADDING

Assemble backboard padding to backboard. Follow instructions that are packed with backboard padding.

FINAL INSPECTION

Touch up any scratches that may have occurred during shipping or assembly with touch up paint

IMPORTANT – UPON FINAL SET-UP OF THIS BACKSTOP, SHOW THE INDIVIDUAL(S) WHO WILL OPERATE THIS BACKSTOP HOW TO PROPERLY OPERATE THIS BACKSTOP. READ THE WARNING LABELS TO THEM, EXPLAINING THE IMPORTANCE OF FOLLOWING SAFE OPERATING PROCEDURES. THIS INSTRUCTION MANUAL MUST BE GIVEN TO AN OFFICIAL IN CHARGE OF THE FACILITY FOR FUTURE REFERENCE.

THIS BACKSTOP MUST BE OPERATED ONLY BY AUTHORIZED PERSONNEL FAMILIAR WITH THE SAFE OPERATING INSTRUCTIONS AND PROCEDURES. THIS EQUIPMENT SHOULD BE INSPECTED BEFORE EACH USE FOR WEAR, LOOSE FITTINGS, DAMAGE AND PROPER STABILITY. CONSULT A TRAINED SERVICE TECHNICIAN OR THE FACTORY WHEN IN DOUBT.



WARNING

SINCE THE FOLDING ACTION OF THIS BACKSTOP IS SPRING-ASSISTED, A POTENTIAL HAZARD EXISTS IF PROPER SAFETY PRECAUTIONS ARE NOT FOLLOWED. WHEN REMOVING OR REPLACING THE BACKBOARD ON THIS BACKSTOP, THE TELESCOPING BRACE / THRU PIN MUST BE LOCKED IN POSITION, TO PREVENT THE BACKSTOP FROM SUDDENLY SPRINGING TO THE UP POSITION, WHICH COULD RESULT IN SEVERE INJURIES, OR EVEN DEATH. CONSULT FACTORY WHEN IN DOUBT.

OPERATING PROCEDURES

TO RAISE BACKSTOP TO PLAYING POSITION

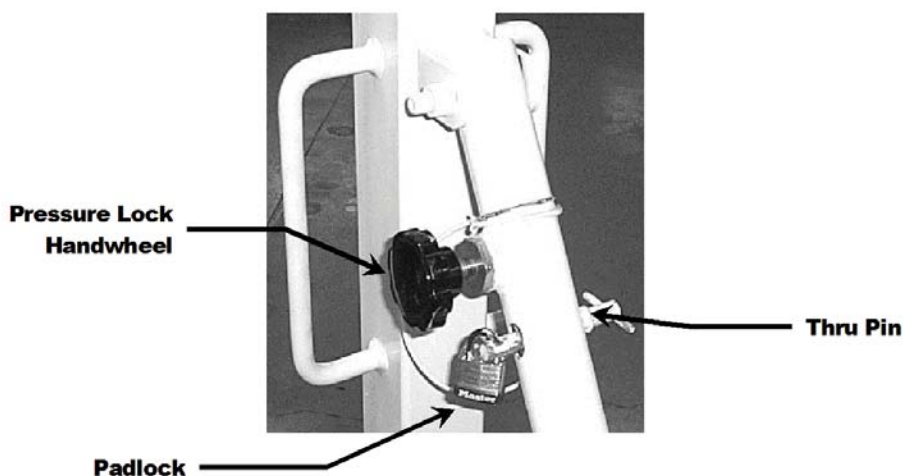
1. Roll to the playing position while backstop is in the folded and locked position.
2. Lower front leveling feet to lock backstop in place.
3. Loosen (turn counterclockwise) the pressure lock handwheel on the telescoping height adjustment brace.
4. Remove the padlock and thru pin in the telescoping height adjustment brace tube.
5. Clear all individuals from the floor area around the backstop. Stand to one side of the backstop, grasp handle on rear mast, then carefully and slowly lift upward on handle located near rear of backstop.
6. Slowly raise or push backstop to desired goal height setting (8', 9', or 10').
7. Replace thru pin and padlock.
8. Tighten handwheel in telescoping brace securely.
9. For competition use, secure rear of backstop to floor with tie-down knob (as specified by the NCAA rules for competitive use).

TO LOWER BACKSTOP FOR TRANSPORT/ STORAGE

1. Remove tie-down system (if applicable).
2. Loosen (turn counterclockwise) the pressure lock handwheel on the telescoping height adjustment brace.
3. Remove the padlock, and while grasping the side handle on the rear vertical support, remove the thru pin from the telescoping brace.
4. Stand to one side, grasp handle on rear mast, and slowly lower the backstop to the lowest down or storage position.
5. Replace thru pin and padlock in telescoping brace.
6. Tighten handwheel in telescoping brace securely.
7. Raise front leveling feet
8. Roll backstop to the storage location

IMPORTANT

ALWAYS KEEP PADLOCK IN THE LOCKED POSITION ON THE TELESCOPING HEIGHT ADJUSTMENT BRACE WHILE IN THE PLAYING OR STORAGE POSITIONS, TO PREVENT USE OF THIS BACKSTOP BY UNAUTHORIZED INDIVIDUALS, WHO ARE NOT FAMILIAR WITH THE SAFE OPERATION OF THE BACKSTOP.

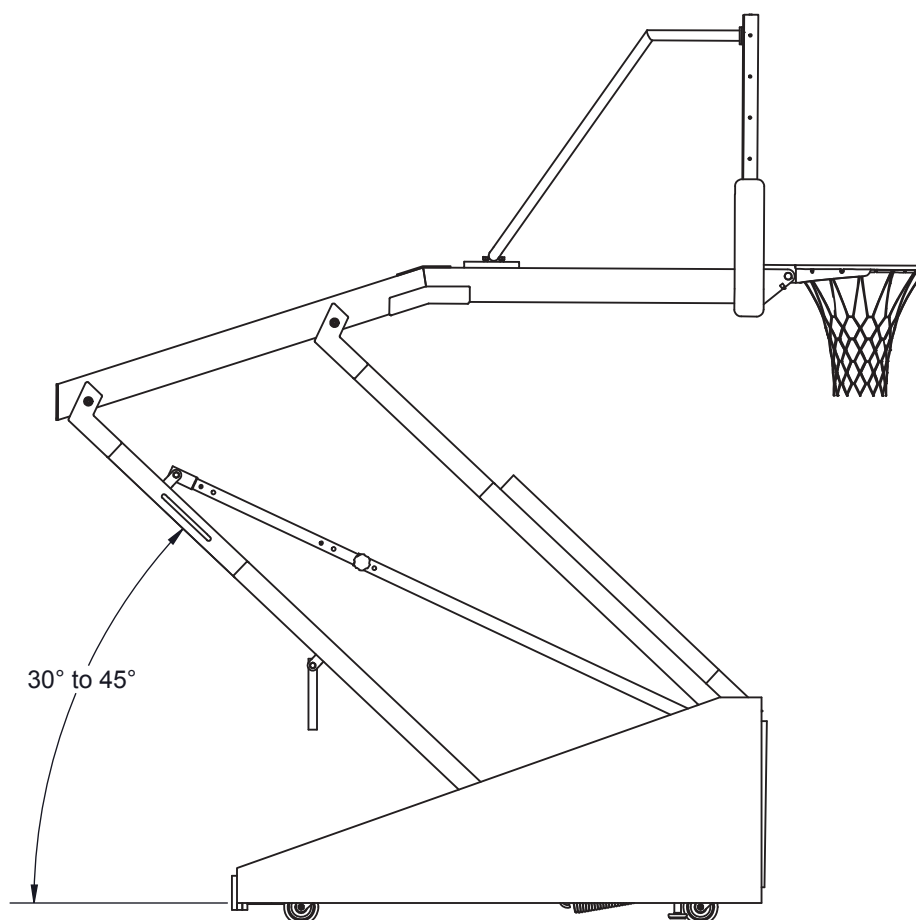


ADJUSTMENT OF SPRING-LOADED MECHANISM FOR EASE OF RAISING AND LOWERING BACKBOARD

The tension springs on this backstop have been pre-adjusted at the factory for proper raising and lowering of the backboard. However, should it be necessary to adjust the springs after years of use, or with the addition of a shot clock, the following adjustment procedures should be followed. As a safety precaution, it is advisable to check operation of backstop with two individuals (one standing on each side of the backstop) in the event of unexpected movement, or undue forces exerted by the backstop support mechanism. Refer to detail on page 16 for adjustment of tension springs.

WARNING – When making adjustment, the backstop must be in the up and locked position. Do not turn the adjustment nuts (C) more than two turns before trying operation of backstop, to avoid erratic or sudden movement, which may result in bodily injury or damage to the backstop. When checking folding action, keep all individuals clear of backstop and stand to one side while grasping handle.

Spring setting – For proper operation of this backstop, it is highly recommended that the spring tension be adjusted so backstop will be held in a static position with the vertical supports at an approximate 30° to 45° angle from the horizontal position. See detail below.



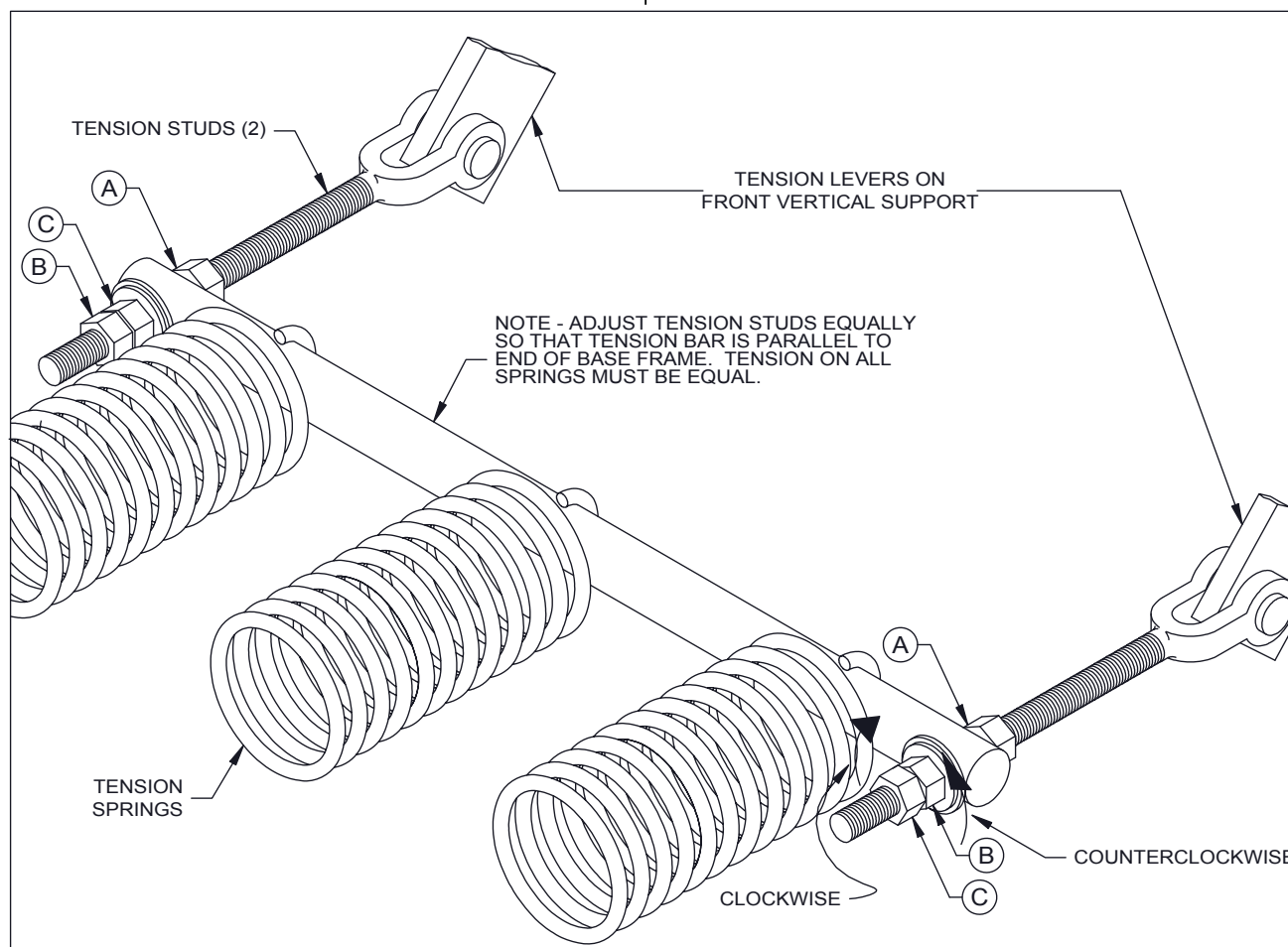
For proper operation, the backstop must be manually pushed to the full up (playing) position, or the full down (storage) position. Operate backstop slowly to prevent damage or injury.

DIFFICULTY IN RAISING BACKSTOP TO THE PLAYING POSITION (REFER TO DETAIL BELOW)

1. Loosen (turn clockwise) the two jam nuts (A) approximately six turns.
2. Loosen (turn counterclockwise) the two jam nuts (B) approximately one turn.
3. Loosen (turn clockwise) the two jam nuts (C) no more than two turns.
4. Carefully raise backstop to the playing position and check static position (refer to Detail "I" on page 17). Should it be necessary to tighten springs further, carefully raise backstop and lock it in the up position before proceeding.
5. Repeat steps No. 3 & 4 above until folding action of backstop functions properly.
6. Re-tighten jam nuts (A & B) securely to lock jam nut (C) in position after final adjustment has been made.

DIFFICULTY IN LOWERING BACKSTOP TO THE TRANSPORT / STORAGE POSITION (REFER TO DETAIL BELOW)

1. Loosen (turn clockwise) the two jam nuts (A) approximately one turn.
2. Loosen (turn counterclockwise) the two jam nuts (B) approximately six turns.
3. Loosen (turn clockwise) the two jam nuts (C) no more than two turns.
4. Carefully raise and lower backstop and check static position (refer to Detail "I" on page 17). Should it be necessary to loosen springs further, carefully raise backstop and lock it in the up position before proceeding.
5. Repeat steps No. 3 & 4 above until folding action of backstop functions properly.
6. Re-tighten jam nuts (A & B) securely to lock jam nut (C) in position after final adjustment has been made.





www.porterathletic.com
888-277-7778

735 Portable Basketball Backstop Installation, Operation, and Maintenance Manual

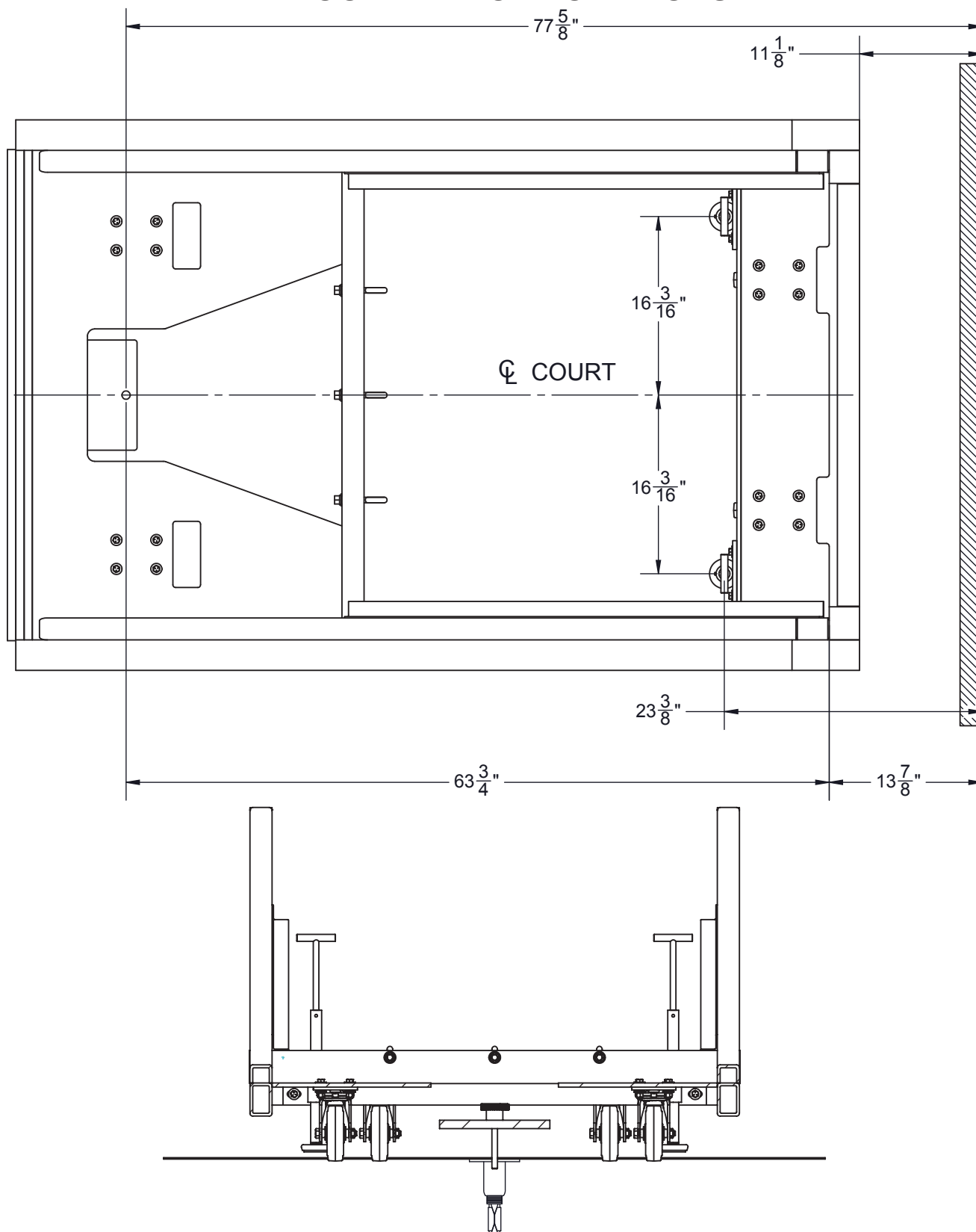
MAINTENANCE CHECKLIST

Perform a complete inspection of this portable backstop at least quarterly (four times a year).

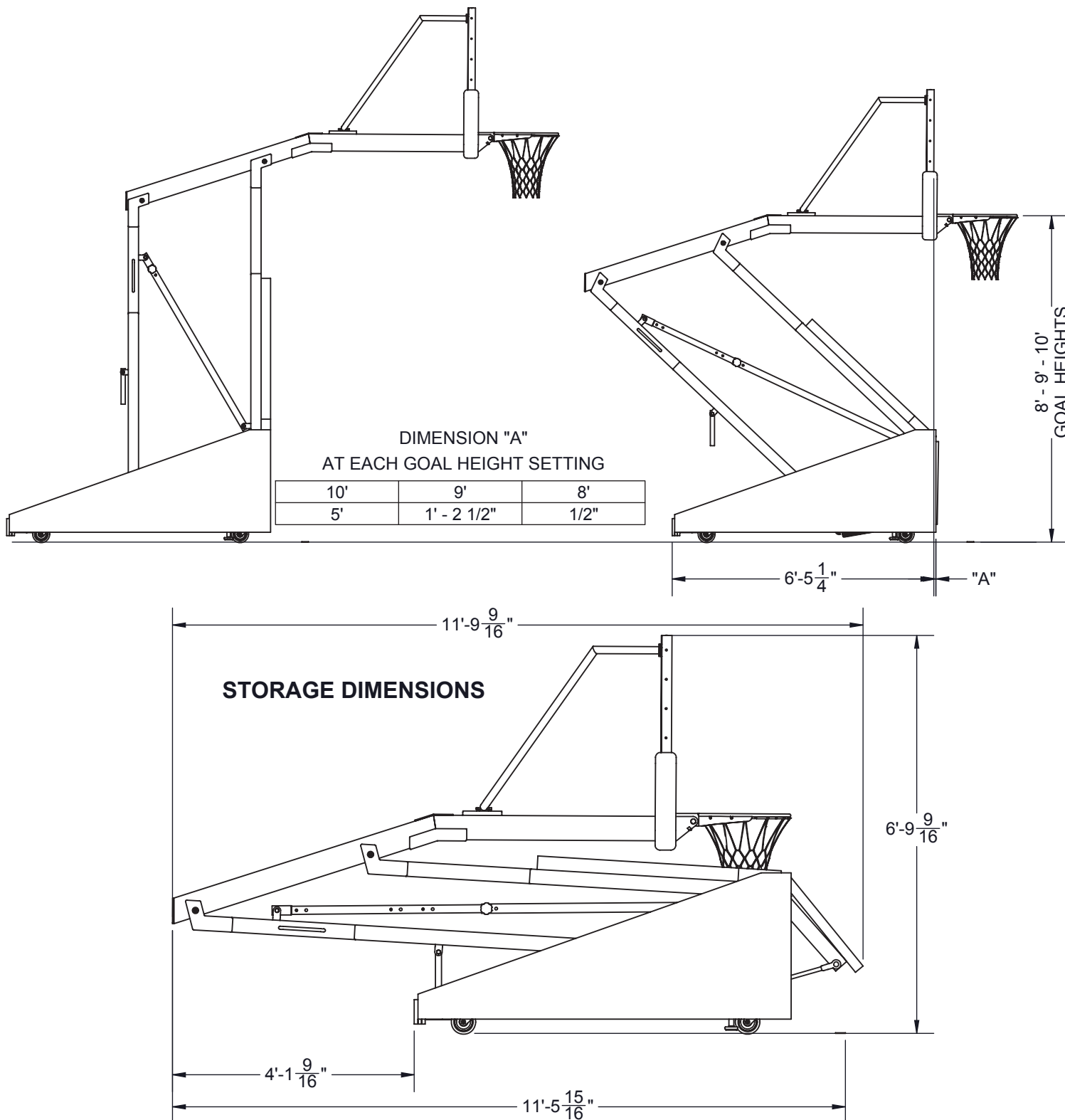
- ✓ Check entire backstop for structural integrity. Examine welds for soundness. Inspect all fittings and hardware – replace as required.
- ✓ Check all padding on portable backstop and on backboard.
- ✓ Check optional tie-down system (if applicable).

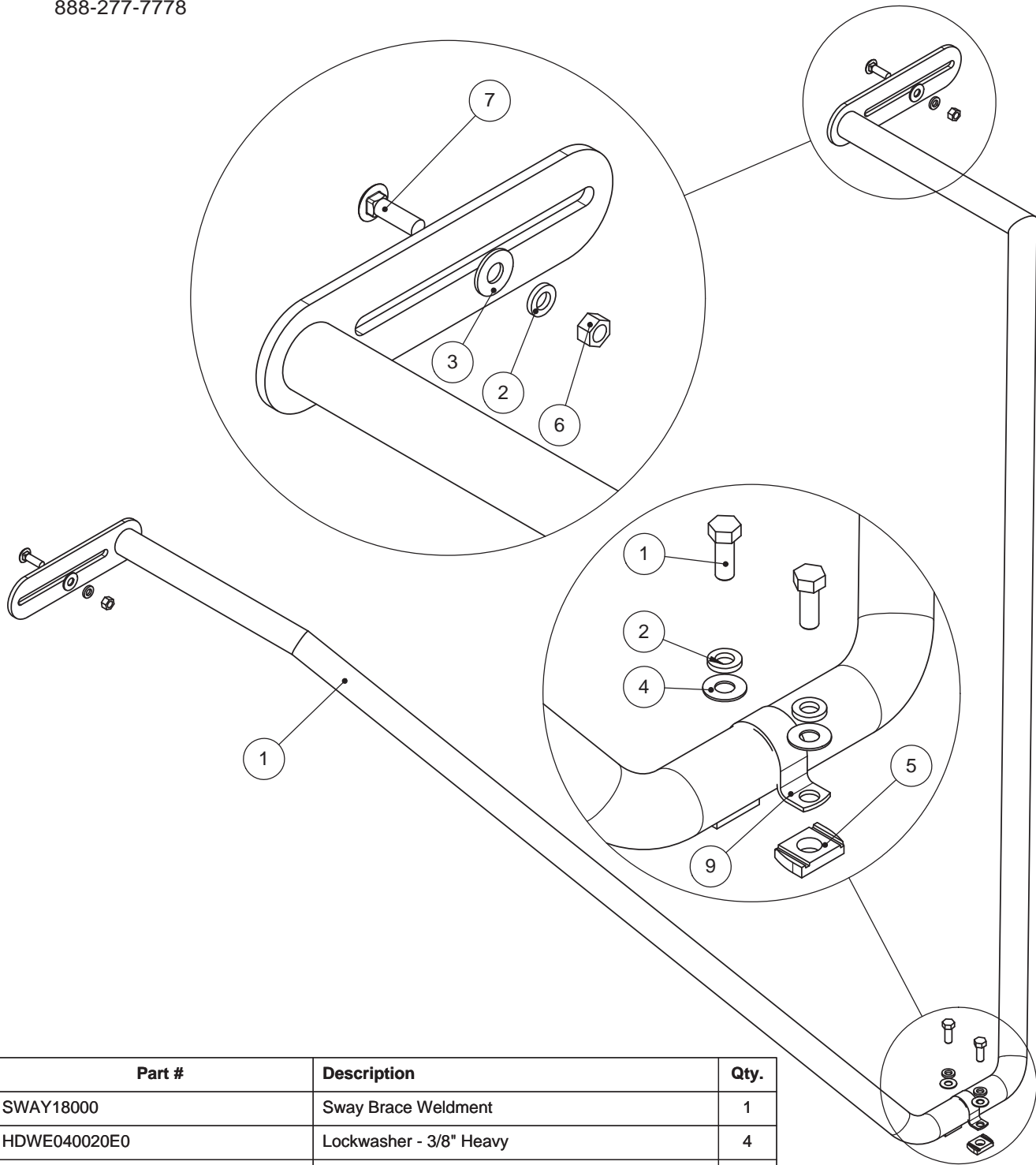
No lubrication is required on this portable backstop.

FLOOR ANCHOR LOCATIONS



STORAGE DIMENSIONS





#	Part #	Description	Qty.
1	SWAY18000	Sway Brace Weldment	1
2	HDWE040020E0	Lockwasher - 3/8" Heavy	4
3	HDWE050040E0	3/8" Flatwasher	2
4	M2534	Washer, Flat, 3/8" SAE, .875" OD, .4" ID	2
5	HDWE030570E0	Unistrut Nut w/o Spring 3/8-16. P3008 or N228WO	2
6	HDWE030020E0	Hex Nut - 3/8"-16	2
7	HDWE020130E0	Carriage Bolt, 3/8" - 16 X 1- 1/4"	2
8	HDWE011240E0	Hex Bolt 3/8"-16 x 1	2
9	CLMP00008	Sway Brace Clamp	1



www.porterathletic.com
888-277-7778

735 Portable Basketball Backstop Installation, Operation, and Maintenance Manual

GUARANTEE


All materials and workmanship of basic materials are guaranteed to be free and clear of defects. Defective material will be repaired or replaced, at our option, subsequent to complete information being received by us concerning the nature of the defect, for a period of one year from the date of completion of the assembly/installation.

NAME OF DEALER:	NAME OF INSTALLATION COMPANY
PHONE #:	PHONE #:

Porter Order Number: _____

Date of Completion: _____

Care has been taken to fabricate and install this equipment to provide years of safe, satisfactory use and trouble-free service. The key to satisfactory service from this equipment is proper operation and care. Should any malfunctions occur, please notify your supervisor and call your local Porter Dealer or Representative.

 **WARNING:** This product can expose you to Titanium Dioxide, which is known to the State of California to cause cancer. For more information go to www.p65warnings.ca.gov.

E