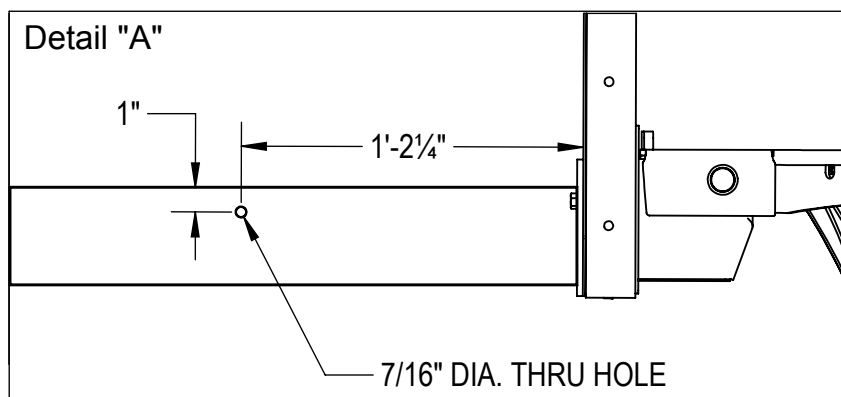
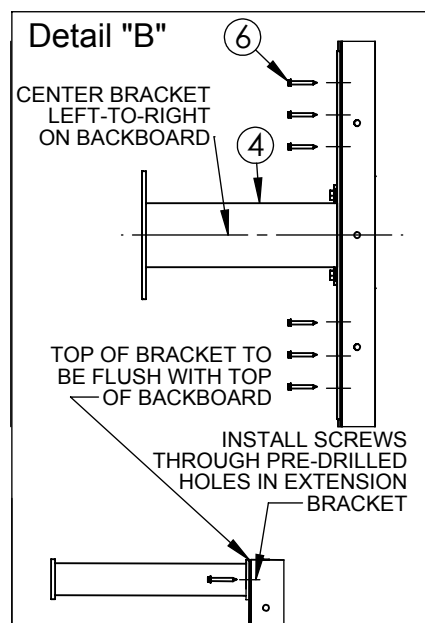


1. Check all items against Parts List at right to ensure all have been included. Shot clock supports are supplied as either **Each** (for one shot clock) or **Pair** (for one pair of shot clocks).
2. Drill a 7/16" diameter hole through the boom on the portable backstop. NOTE - The hole must be located accurately, according to the dimensions shown in Detail "A". This hole will be used to secure the shot clock support base/upright to the portable backstop boom. See Detail "A".

PARTS LIST				
Item No.	Part No.	Qty. Each	Qty. Pair	Description
1	UPRT00375	1	2	Shot Clock Support Base
2	FRME 00399 036 L2	1	2	Shot Clock Support Upright
3	FRME 00399 036 R2	1	2	Shot Clock Support Upright
4	BRKT 00031 003	1	2	Extension Bracket
5	PLTE 00326 003	1	2	Rear Attachment Plate
6	HDWE 06121 0E0	6	12	#12 x 7/8" Lg. Self-Drilling, Self-Tapping Screw
7	HDWE 01124 0E0	4	8	3/8" x 1" Lg. Hex Head Cap Screw (Grade 5)
8	HDWE 01221 0E0	1	2	3/8" x 4" Lg. Hex Head Cap Screw (Grade 5)
9	HDWE 01228 0E0	1	2	3/8" x 7" Lg. Hex Head Cap Screw (Grade 5)
10	HDWE 05004 0E0	1	2	3/8" Flat Washer
11	HDWE 04002 0E0	4	8	3/8" Lock Washer
12	HDWE 03057 0E0	4	8	3/8" Channel Nut
13	HDWE 03072 0E0	1	2	3/8" Convex Lock Nut
14	HDWE 55043 000	2	4	3/8" Nylon Flat Washer
15	BUSH 00078 002	2	4	Electrical Bushing

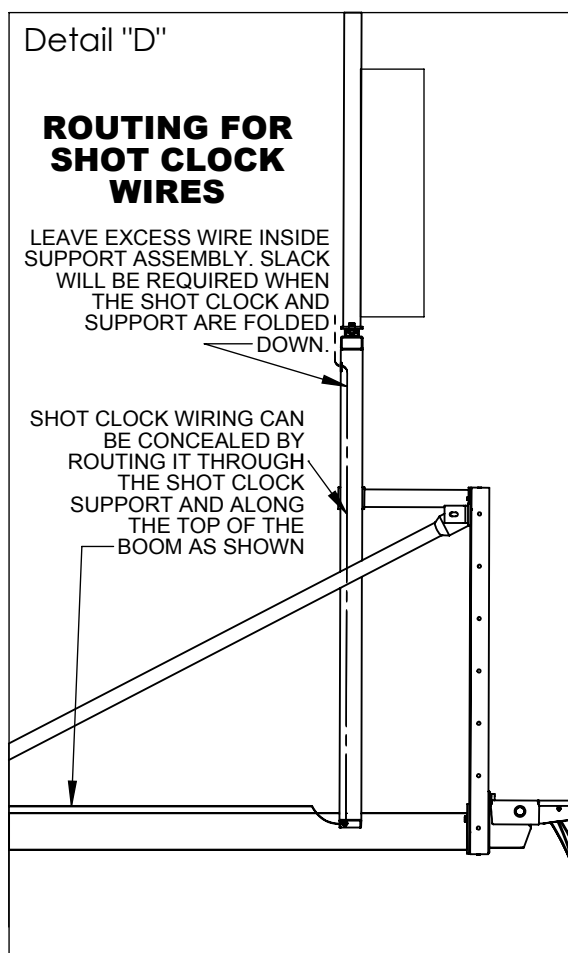
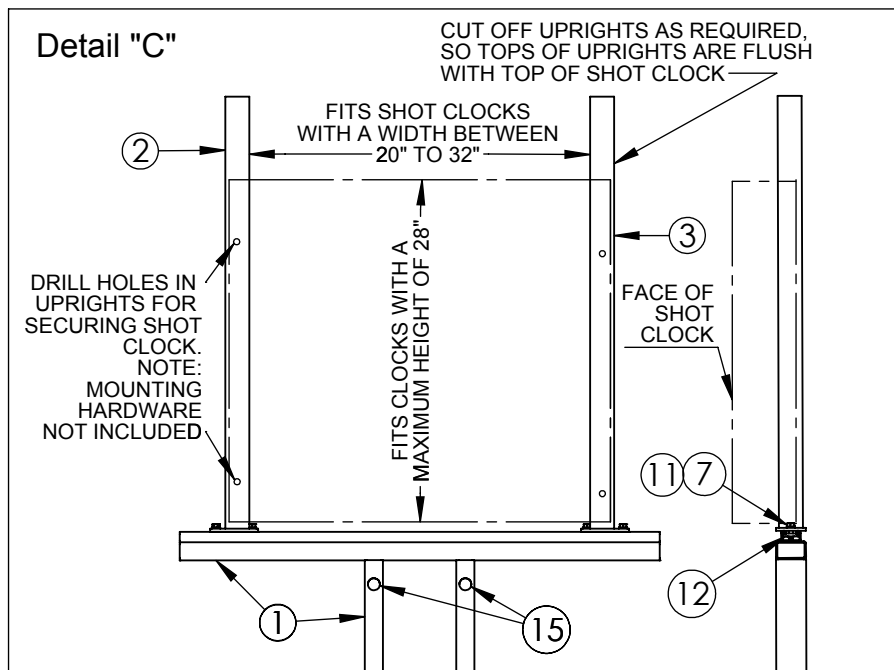


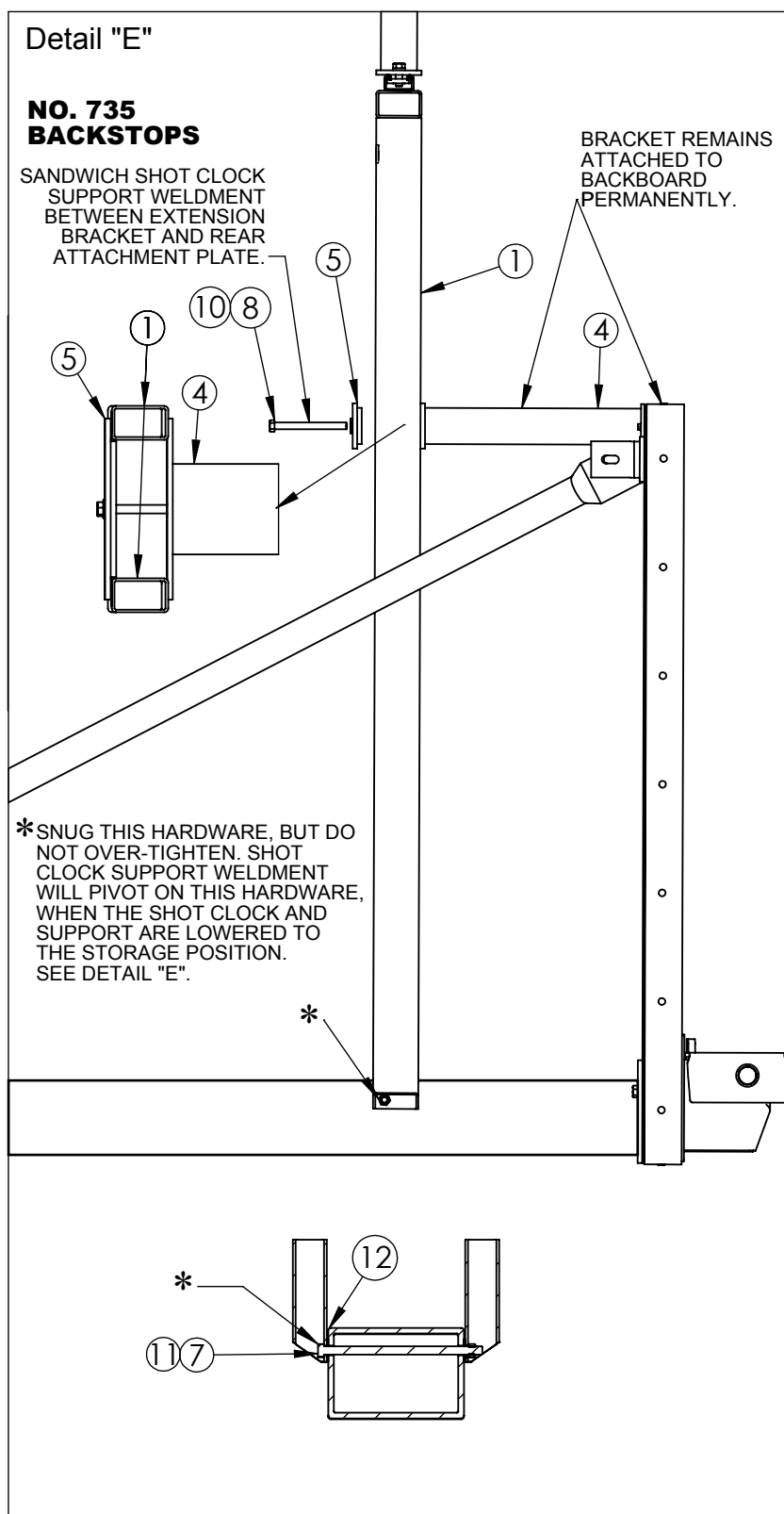
3. Secure the extension bracket (#4) to the top of the backboard. Use six #12 x 7/8" lg. self-drilling, self-tapping screws (#6) through the pre-drilled holes in the extension bracket. Align the top edge of the bracket with the top edge of the backboard, and center the bracket left-to-right on the backboard. See Detail "B".



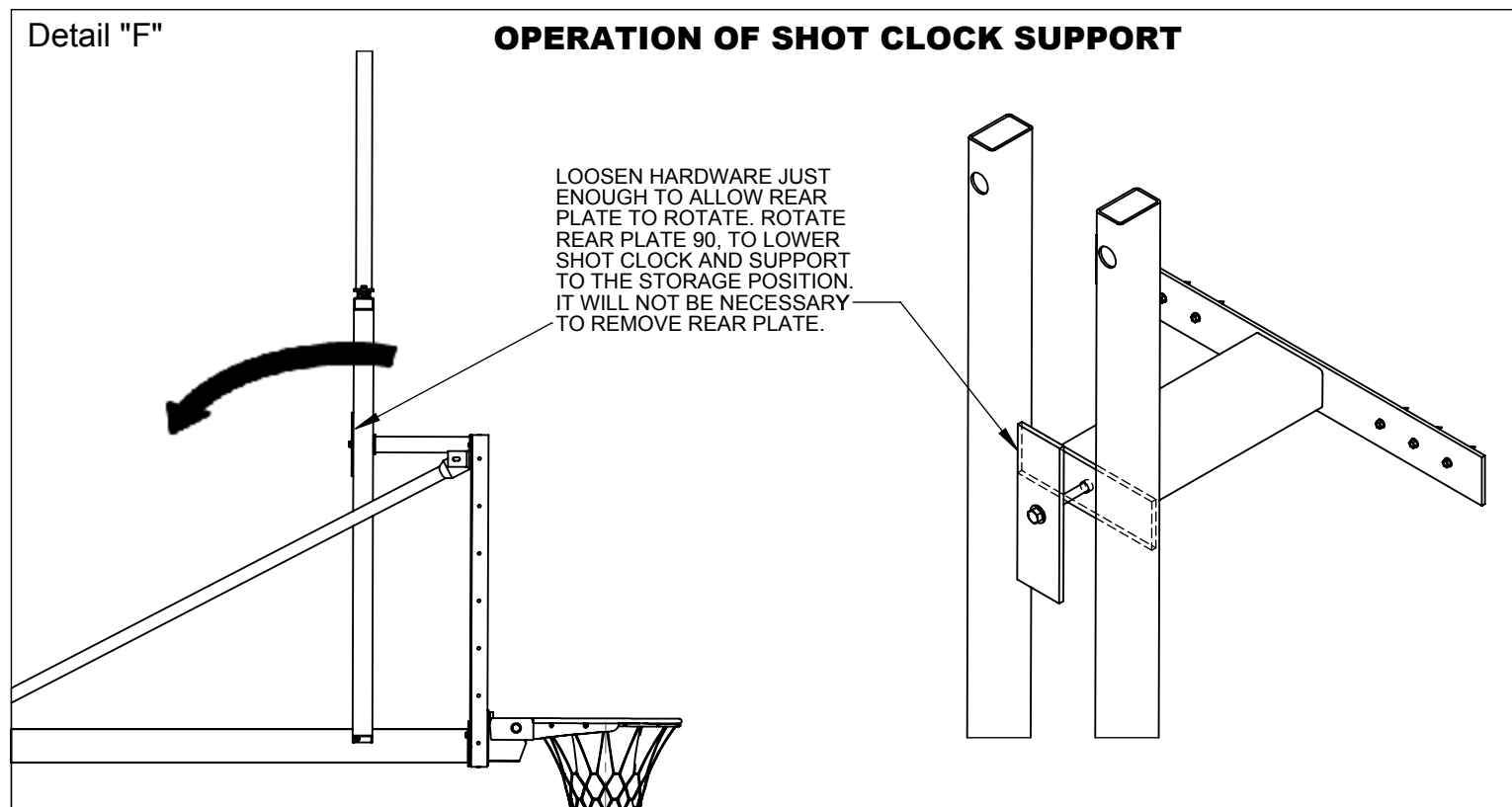
SAVE THESE INSTRUCTIONS FOR FUTURE USE

4. Secure shot clock support base (#1) to boom on portable backstop, and to extension bracket (#4) (from Step No. 3). See Detail "E".
5. Each shot clock support base (#1) has a 1" diameter hole in each vertical tube. Install an electrical bushing (#15) into each of these holes as shown in Detail "E". These openings will provide a means to route the shot clock wires through the support system.
6. Secure shot clock (not included) to shot clock support base (#1). Detail "C" to the right shows a typical installation. 3/8" mounting hardware is provided for shot clocks with four 7/16" diameter mounting holes. Tighten hardware securely.
7. The shot clock wiring can be routed through the support assembly and through the formed ribs on the portable backstop boom. See Detail "D".





8. Installation of shot clock supports and shot clocks is now complete.
9. Proper operation of shot clock support is shown in Detail "H".



10. Give this instruction manual to an official in charge of the facility for future reference.

THIS WARNING IS GIVEN IN COMPLIANCE
WITH CALIFORNIA'S PROPOSITION 65:

WARNING

This product contains chemicals known to the
State of California to cause cancer, birth defects
or other reproductive harm.

SAVE THESE INSTRUCTIONS FOR FUTURE USE