

#768 Pit Cart**Parts List**

DWG:768 Inst-1 04/26/07: JWD.

CHAMPAIGN, IL 800-637-3090

Page 1 of 2

Part #	Description	Qty.
768020	Aluminum Cart Deck	1
768045	Draw Bar (Handle)	1
M7220	12" Swivel Caster	2
M7221	12" Ridged Caster	2
M1225	3/8" x 1 1/4" Hex Bolt	16
M1291	3/8-16 Nylock Hex Bolt	4
M1295	3/8-16 x 2 1/2" Hex Bolt	2
M2262	3/8" Lock Washer	16
M2273	5/16" Std. Flat Washer	18
M2543	1/2" SS Flat Washer	4
M2544	3/8-16 SS Jam Nut	2
M2736	U-bolt, 3/8" x 2" x 4" long	1
M711B	1/2" OD x 1 1/2" Bronze Bushing	2

#768 Pit Cart

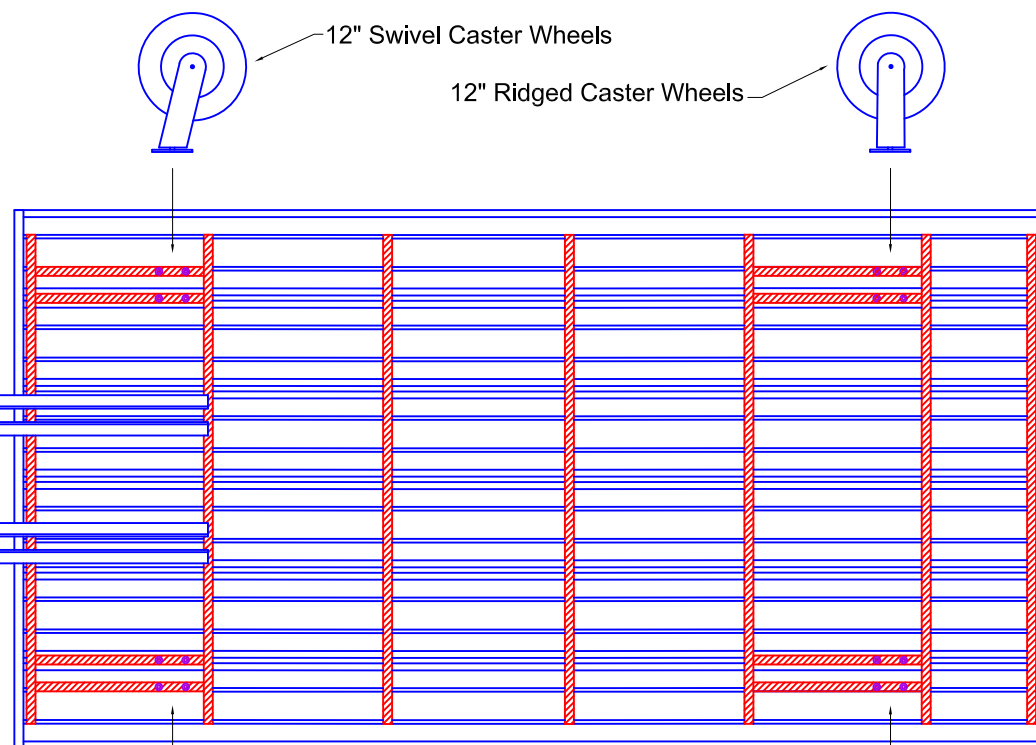
Assembly Instructions

DWG:768 Inst-2 04/26/07: JWD.

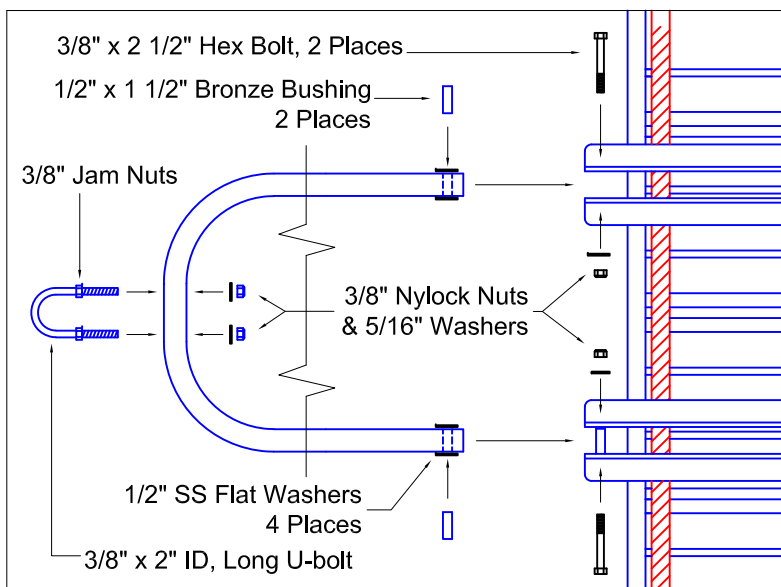
Page 2 of 2

Pit Cart Assembly

Cart Draw Bar with U-bolt for towing



UNDER SIDE VIEW



Attach caster wheels to cart frame using 3/8-16 x 1 1/4" hex bolts, 3/8" lock washers and 5/16" flat washers. Thread bolts through caster mounting plates into threaded inserts in aluminum frame. Lock washers go between the bolt head and the flat washer.

WARNING: This product can expose you to Titanium Dioxide, which is known to the State of California to cause cancer. For more information go to www.p65warnings.ca.gov.

E