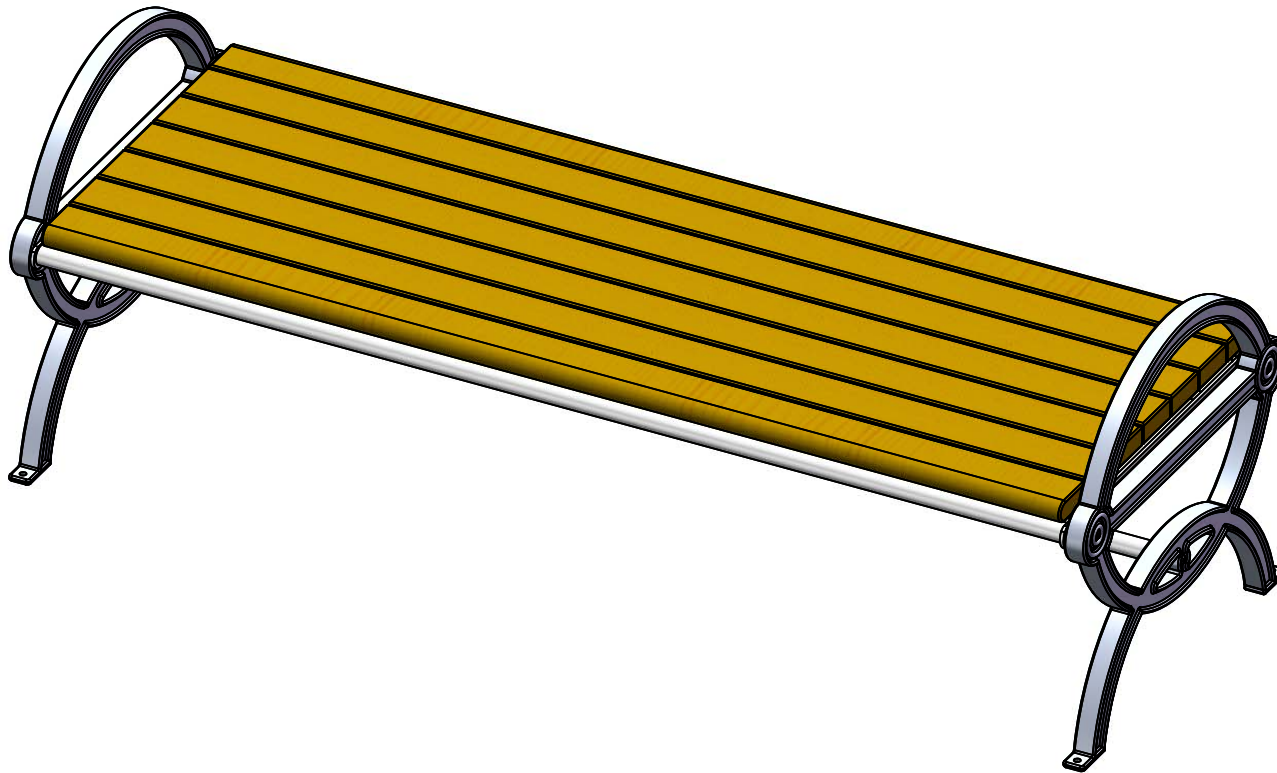




A **PLAYCORE** Company



Model # 98-R6

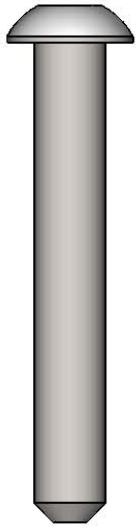


A PLAYCORE Company

SAFETY WARNINGS & EQUIPMENT INSPECTION

- Owners and installers please note these safety warnings and make use of this checklist on a regular basis.
- Follow installation instructions when erecting equipment.
- Ground surfaces around equipment should be restored as needed. Concrete footings should never be exposed. Surface depth should comply with ASTM and CPSC specifications.
- Check for and repair damage caused by wear or vandalism, a major factor in injury causing situations.
- All protruding bolts should be covered or cut off and finished smooth. Sharp edges on pipes should be capped or removed. Check for bent, broken, or severely worn pipe, and replace.
- All equipment should be free of rust and repainted whenever necessary to deter rusting.
- We provide our customers with layout sheets and installation instructions. Please keep on file the specifications sheet that contains the listing of every part used.
- Never add components not intended for use with this product.
- Regular maintenance is necessary in this and all park and recreational equipment to insure the safety of the user.
- Note: Proper maintenance of equipment requires regular tightening of all bolts, nuts, and setscrews.
- Note: Regular checking of all parts, castings, etc. should be made. If a part is broken or worn, it should be replaced immediately.
- Check to be sure all fittings are tight and that bars and pipes do not move.
- Replace all worn S-hooks. S-hooks must be completely closed. Failure to close S-hooks can result in serious injury to the user. NEVER reuse S-hooks.
- Test for free movement of swing hanger and other moving attached parts.
- Check for worn chains and replace them.
- A soft resilient surface should be placed under all swings extending at least twice the height of the top rail both front and back.

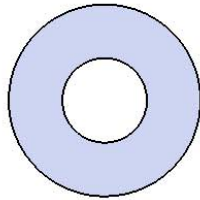
HARDWARE



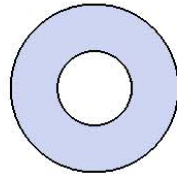
3/8" X 2-1/2"
Button Head Bolt



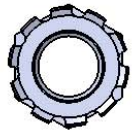
5/16" x 1-1/4"
Lag Bolt



3/8" Washer

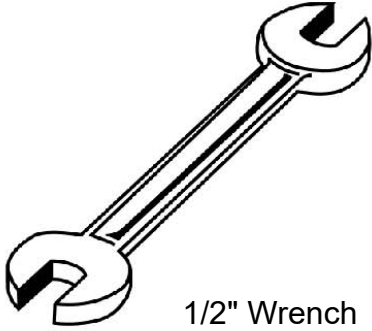


5/16" Washer

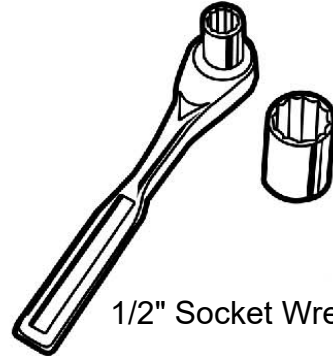


3/8" Kep Nut

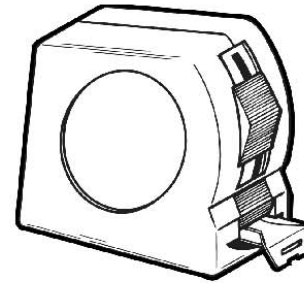
TOOLS REQUIRED



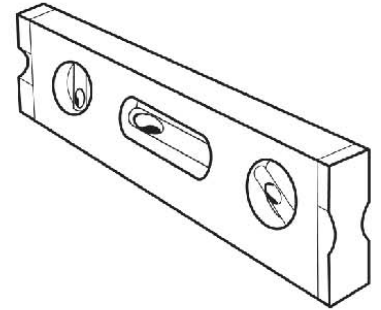
1/2" Wrench



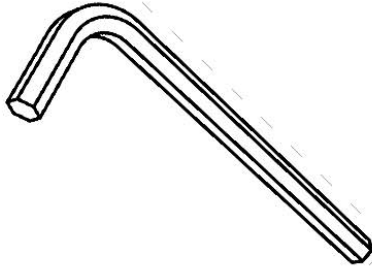
1/2" Socket Wrench



Tape Measure



Level



7/32 Allen Wrench

ULTRA SITE PRODUCT SPECIFICATIONS

98-R6 DURHAM BENCH WITHOUT BACK

Seats: 2x4 planks are made from a minimum of 96% post-consumer or post-industrial recycled plastic. Contains UV stabilizers to prevent fading. Seat support frame is made of 10 ga steel plate, 1" sch 40 pipe, and 5/8" solid rod. Electrically MIG welded.

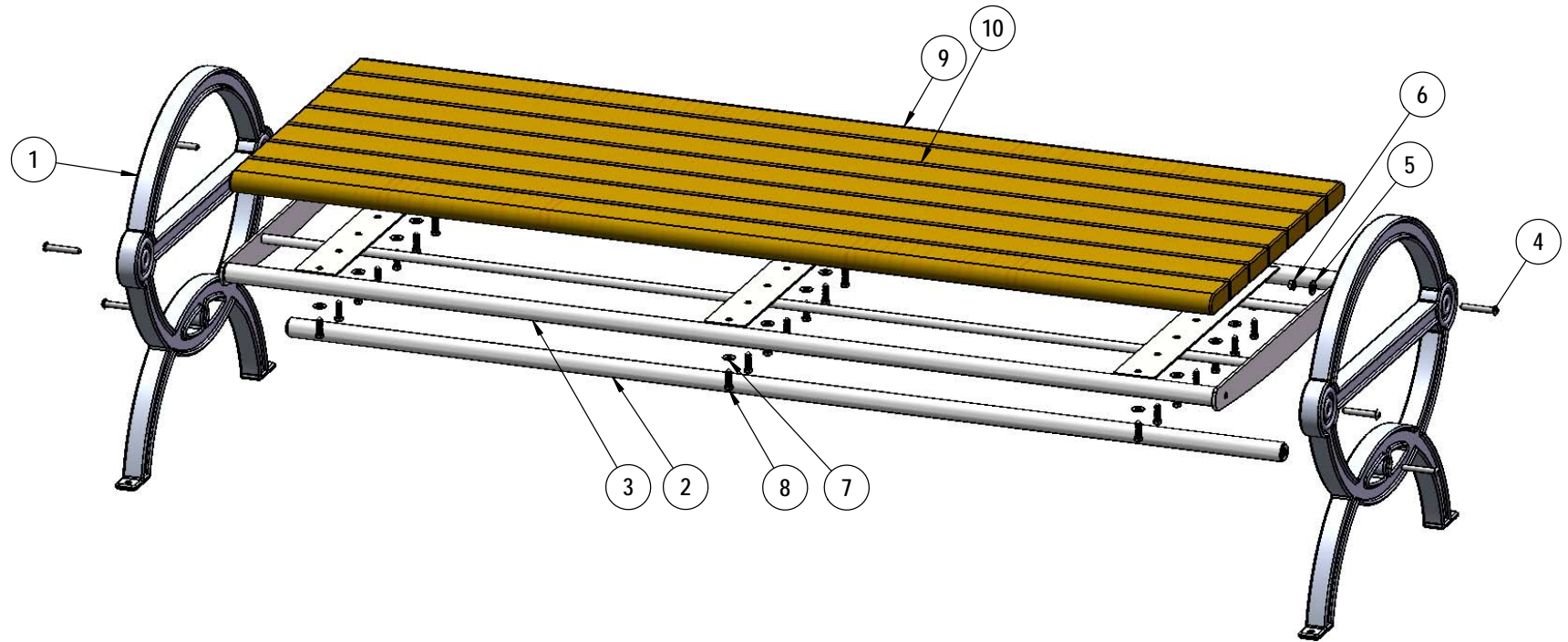
Frame: Legs are cast aluminum.

Frame Coating: Steel is sandblasted to near white condition. Coated with zinc rich epoxy primer and top coated with electrostatic powder coat, oven cured.

Hardware: All fasteners are stainless steel.

Dimensions: 6' portable/surface mount bench without back. Seats are 26-1/2" wide x 72-3/8" long. Seat height is 18-1/2" from the ground to the top of the seat. The overall dimensions are 76" x 26-1/2" x 25-5/8".

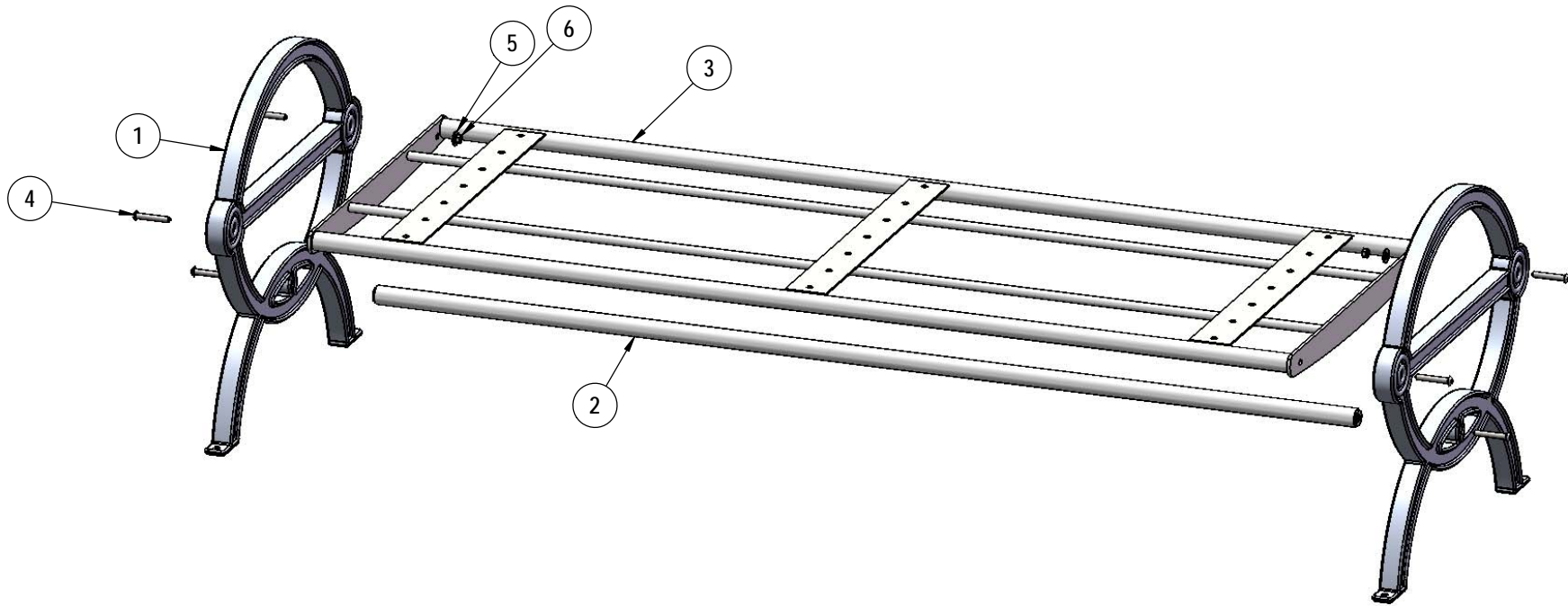
COMPONENTS



ITEM NO.	PartNo	DESCRIPTION	QTY.
1	11-01-CAST8	Durham Casted Aluminum Bench Frame	2
2	01-01-0637	73" Support Bar	1
3	01-01-0527	6' Recycled Flat Contour Frame - Welded	1
4	33-06-0093	3/8"-16 x 2-1/2" Button Head Bolt (SS)	6
5	33-02-0008	3/8" Flat Washer (SS)	4
6	33-03-0013	3/8" Kep Nut (SS)	4
7	33-02-0007	5/16" SS Washer	21
8	33-05-0034	5/16" x 1-1/4" lag bolt, SS	21
9	R72-2x4B-LB	2x4 Bullnose Recycled Bench Plank-lag bolts (6')	2
10	R72-2x4-LB	2x4 Recycled Bench Plank-lag bolts (6')	5

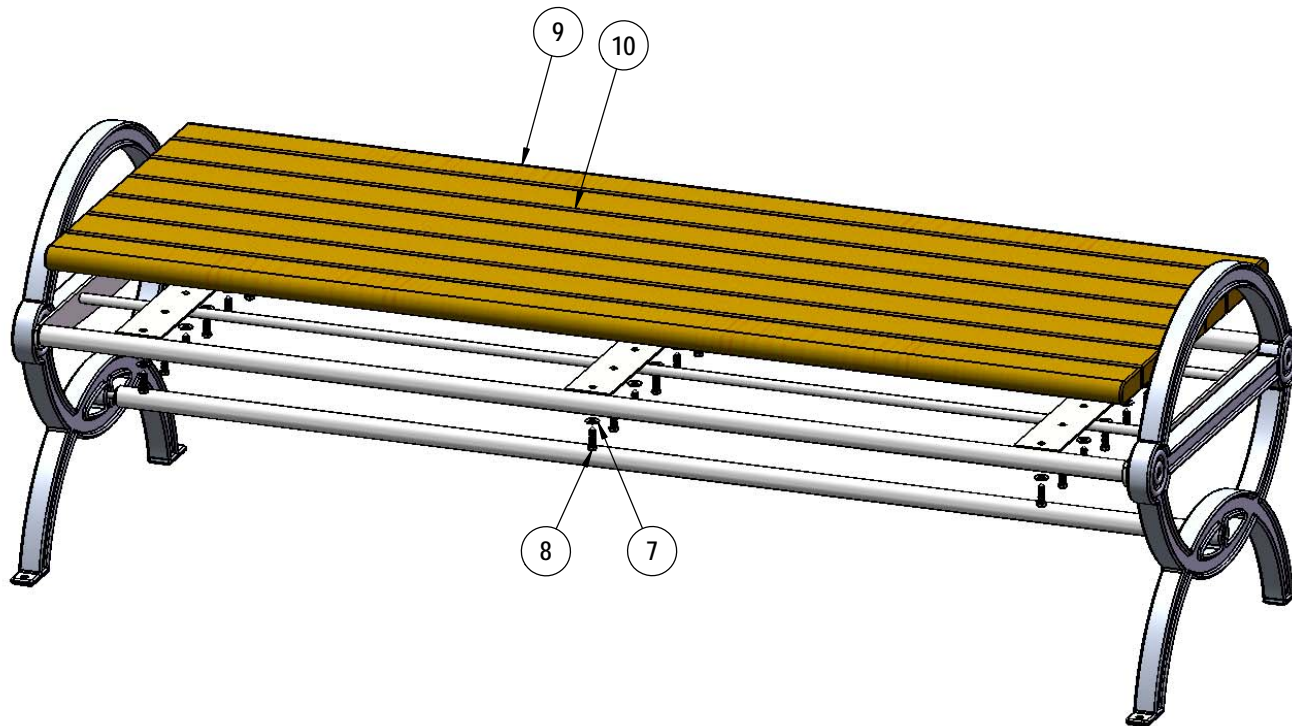
Optional Surface Mount Hardware:
3/8" x 3-1/2" Concrete Expansion Anchor Bolts
(Not Included)

STEP 1



Attach the Recycled Seat Support to the Durham Cast End Frames using the specified hardware.

STEP 2



Attach the 6' Recycled Bench Planks to the Seat Support, placing the 2 Bullnose Planks on the outside, as shown using the specified hardware.

Warning: Over tightening of the Lag Bolts may result in cracking and/or stripping out of the Planks.

OVERALL DIMENSIONS

