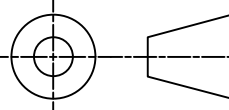

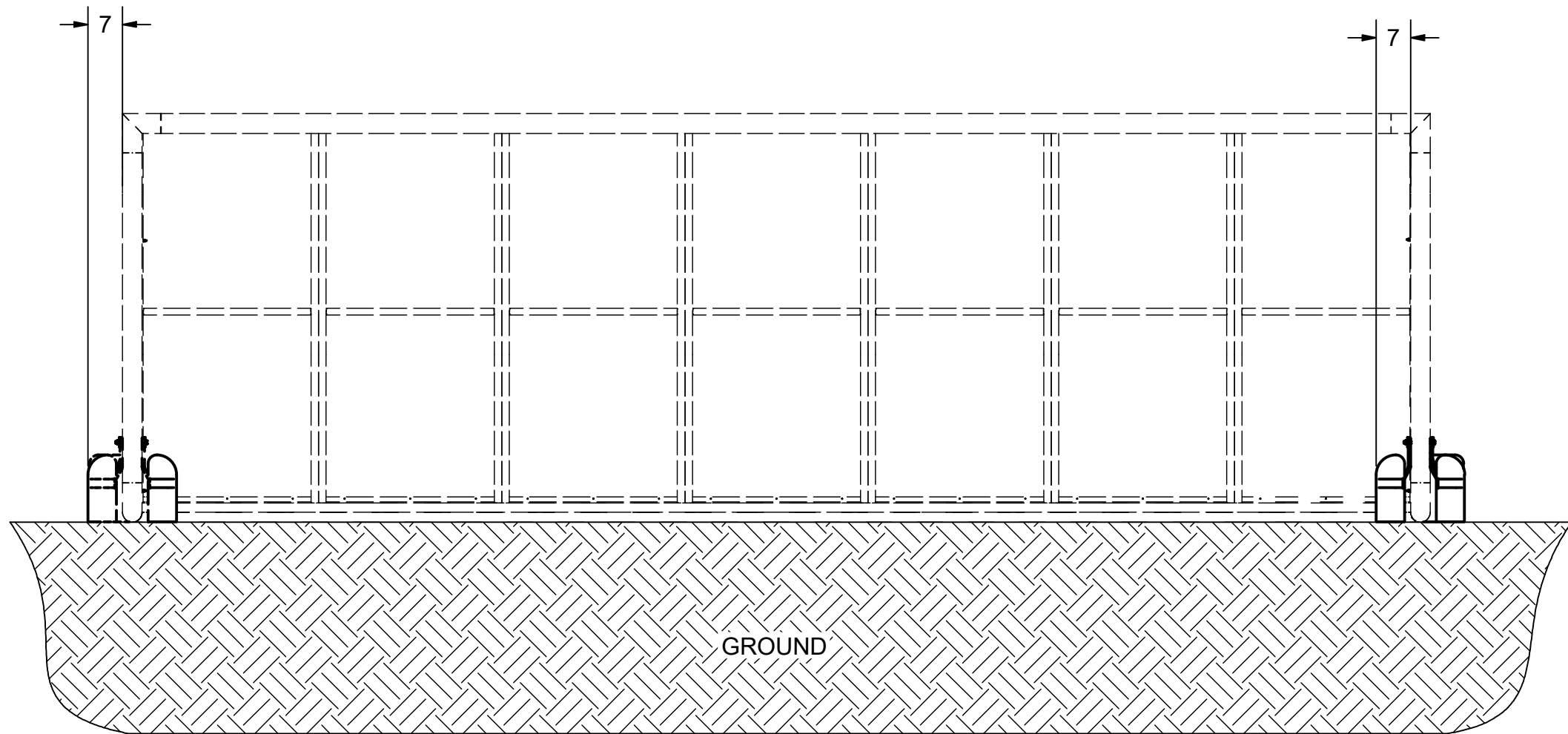


FEATURES:

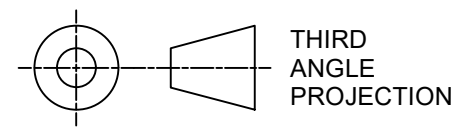
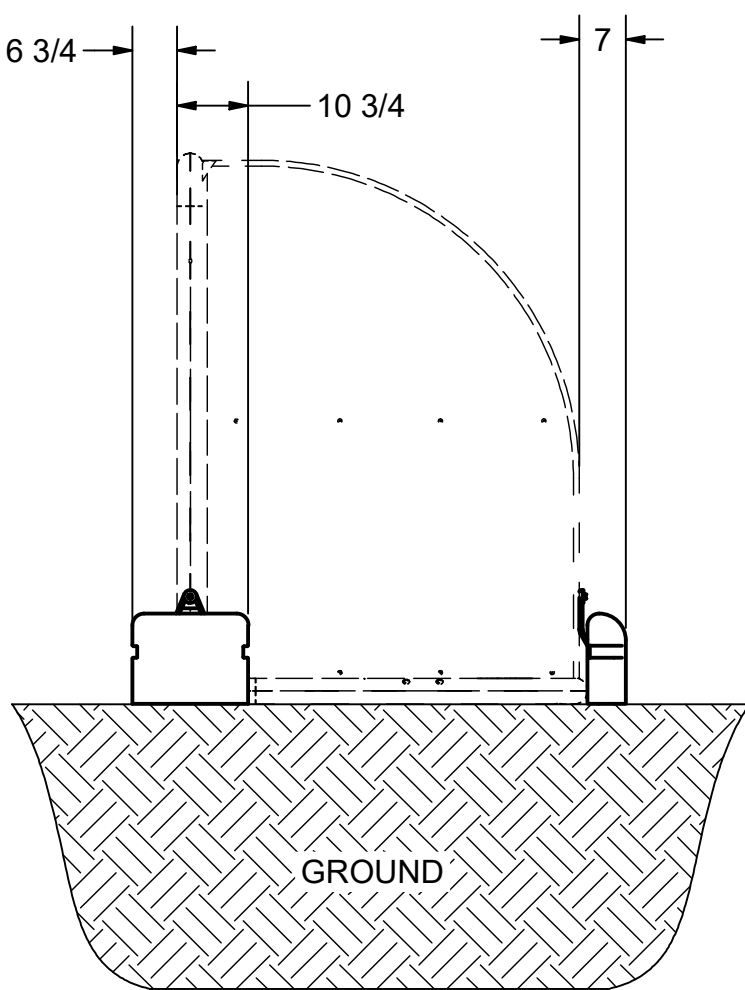
- 1) USE:
9B51 AND 9B54 SHELTERS
- 2) MATERIAL:
CONCRETE / STEEL - WEIGHT / HARDWARE
- 3) FINISH:
WEIGHT - PAINTED GREEN / PLAIN STAINLESS STEEL
ATTACHMENT HARDWARE- ZINC PLATED
- 4) INCLUDED:
WEIGHT (6)
ATTACHMENT HARDWARE (4 ATTACHMENT POINTS)
- 5) ASSEMBLED WEIGHT: 660 LBS.

 <p>THIRD ANGLE PROJECTION</p>	 <p>140 Pacific Drive Quakertown, Pa. 18951</p>	
<p>DIMENSIONS ARE IN INCHES UNLESS OTHERWISE SPECIFIED</p>	<p>Approved By:</p> <p>Date:</p>	<p>Drawing #:</p> <p>10B4607</p>
<p>This item is the confidential property of KWIK GOAL LTD. Reproduction or duplication without the express written consent of KWIK GOAL LTD. is strictly forbidden.</p>	<p>Drawn By: JWillenbecher</p>	
	<p>Date: 8/3/2020</p>	
	<p>Sheet: 1 of 3</p>	
	<p>Revision #:</p>	<p>Desc:</p> <p>ANCHOR WEIGHT FOR PORTABLE SHELTERS</p>
	<p>Cad File: 10B4607.idw</p>	

FRONT VIEW
ATTACHED TO SHELTER



SIDE VIEW
ATTACHED TO SHELTER



DIMENSIONS ARE IN INCHES
UNLESS OTHERWISE SPECIFIED

This item is the **confidential**
property of **KWIK GOAL LTD.**
Reproduction or duplication
without the express written
consent of **KWIK GOAL LTD.**
is **strictly forbidden.**



Approved By:

Date:

Drawn By: JWillenbecher

Date: 8/3/2020

Sheet: 2 of 3

Revision #:

Cad File: 10B4607.idw

Drawing #:

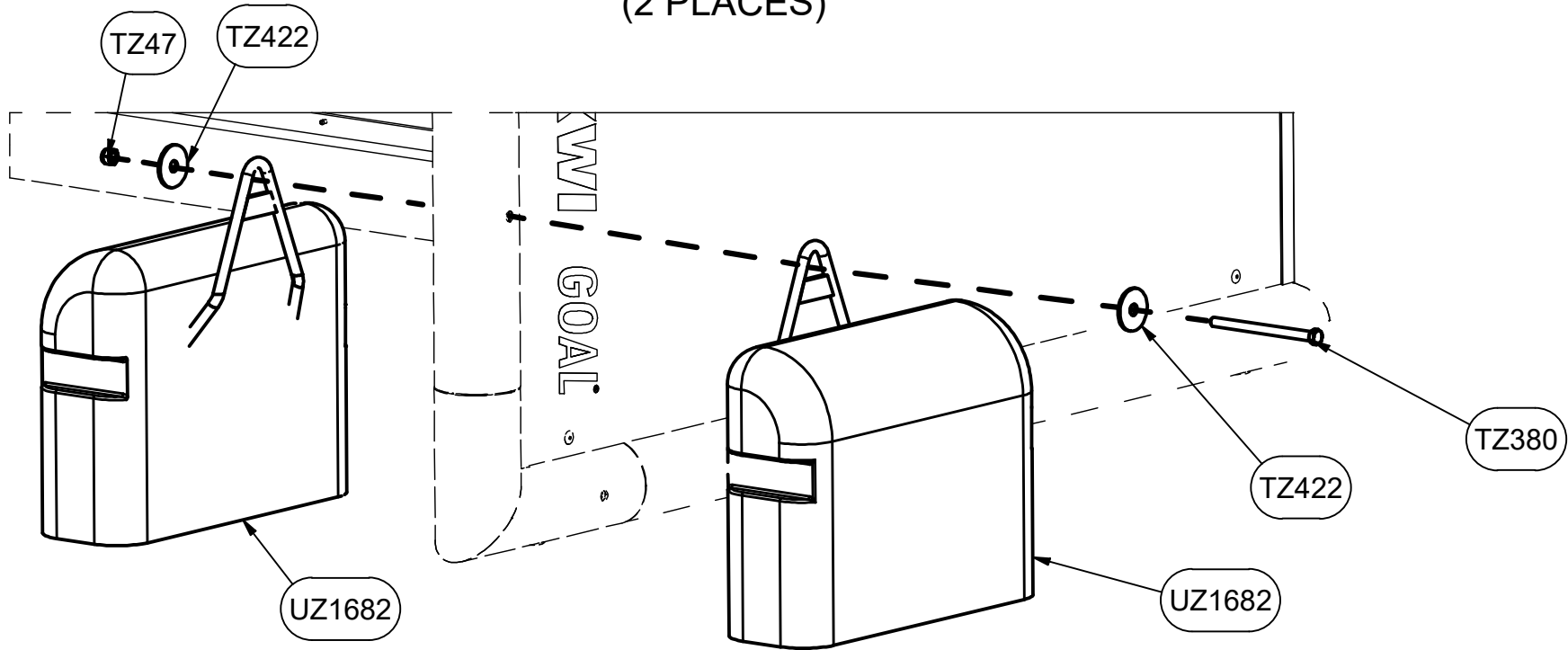
10B4607

Desc:

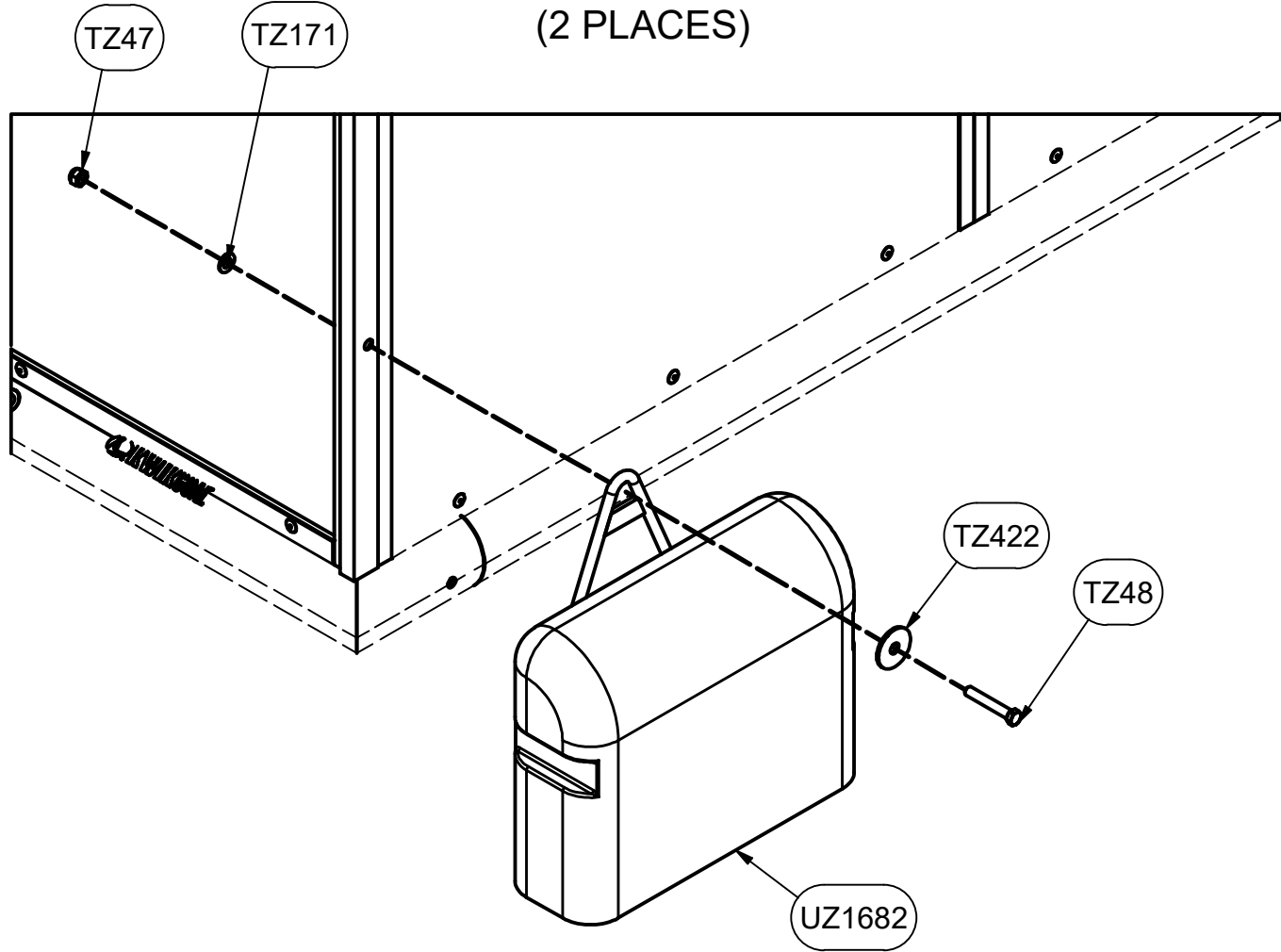
ANCHOR WEIGHT FOR
PORTABLE SHELTERS

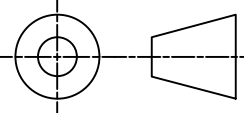

PARTS LIST		
PART#	QTY	DESCRIPTION
TZ48	2	7/16 X 2-3/4 HEX BOLT
TZ171	2	7/16 FLAT WASHER
UZ1682	6	ANCHOR WEIGHT FOR PORTABLE SHELTERS
TZ380	2	7/16 x 6 HEX BOLT
TZ422	6	7/16 FLAT WASHER
TZ47	4	7/16-14 LOCK NUT

FRONT ATTACHMENT
(2 PLACES)



REAR ATTACHMENT
(2 PLACES)



 THIRD ANGLE PROJECTION	 140 Pacific Drive Quakertown, Pa. 18951	
	DIMENSIONS ARE IN INCHES UNLESS OTHERWISE SPECIFIED	Approved By: _____ Date: _____
This item is the confidential property of KWIK GOAL LTD. Reproduction or duplication without the express written consent of KWIK GOAL LTD. is strictly forbidden.	Drawn By: JWillenbecher Date: 8/3/2020 Sheet: 3 of 3 Revision #: _____	Drawing #: 10B4607 Desc: ANCHOR WEIGHT FOR PORTABLE SHELTERS
	Cad File: 10B4607.idw	