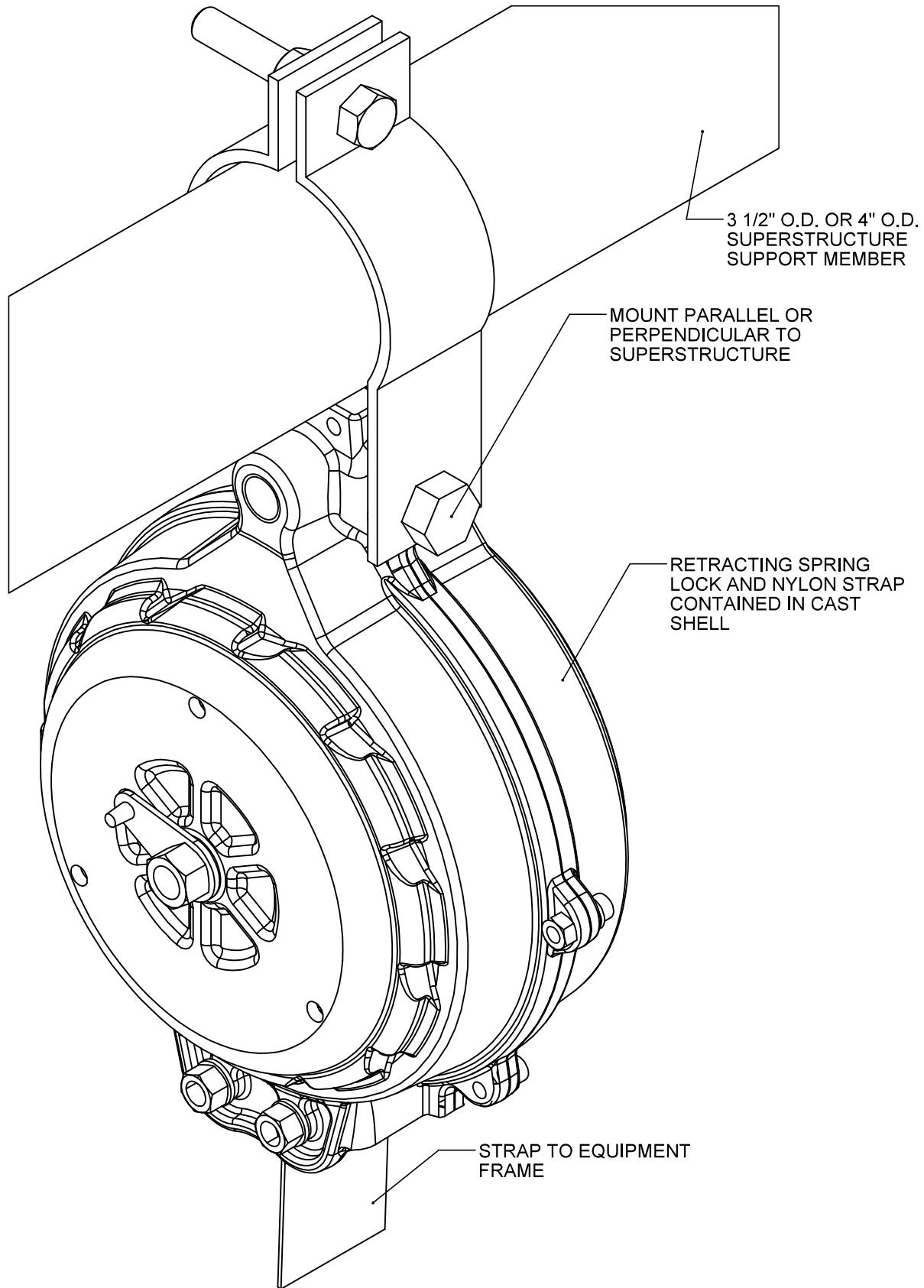


# 797 - SAF-STRAP



\_\_\_\_ - 797 LOCKING SAFETY STRAP FOR OVERHEAD EQUIPMENT

## SPECIFICATIONS

### PORTER No. 797 LOCKING SAFETY STRAP

The safety strap shall be directly speed sensitive to automatically lock a basketball backstop, divider curtain, or other piece of ceiling-suspended equipment in position at any time. The device will lock, whether in storage or during the raising/lowering cycle, in the event of an over-speed occurrence due to a malfunction of the hoisting apparatus, such as winch, cable, pulleys, support fittings, etc. Any increase in cycle speed or tension, whether sudden or gradual, immediately activates the locking device.

The device shall incorporate a 2" wide polyester belt with a breaking strength of 6000 lbs. The entire unit must be capable of withstanding a test using a 1750 lb falling weight, without strap failure or structural damage.

The locking mechanism must be fail-safe, meaning that any sticking, jamming or breakage of any of the components of the arresting mechanism results in immediate, positive locking of the reel. The locking mechanism shall fully engage within 3" of belt travel should a failure occur.

The locking mechanism must react to the actual speed of the reel and prevent it from exceeding normal operating parameters regardless of whether the load suddenly drops by breakage of a component in the hoisting apparatus or whether it accelerates more slowly, as caused by a back-driving winch or the yielding of a structural component. The locking mechanism must always remain in ready position regardless of whether the belt is retracting or extending.

The strap shall incorporate the use of a brightly colored warning strip that indicates when maximum safe extension of the belt has been reached. The standard strap length shall be 36'. Lengths up to 46' shall be accommodated as an option.

The strap shall incorporate a breakaway loop stitched into its lower end to indicate if the unit has been subjected to a heavy load. A bright colored warning label must be exposed if the loop stitching has been broken.

The unit shall permanently lock when a load of more than 1000lbs is captured. To prevent possible re-use and failure of critical components that are stressed when the unit engages a load, the unit shall not be functional after it has caught a significant load.

The strap anchoring system must bear on the full width of the strap and be capable of taking the full breaking strength of the strap. The locking mechanism shall evenly load the drum and housing when engaged. The unit shall be self-aligning so that the force of a fall positions the unit in the ideal plane to prevent damage to the equipment and supporting structure.

The reel must be supported in bearings on both sides to assure that there is no deflection under heavy load, which would cause the strap to be misaligned and suffer damage.

The unit shall incorporate a universal mounting system to allow mounting either parallel or perpendicular to the strap and to allow mounting on either a 4" O.D. or a 3 ½" O.D. round tube.