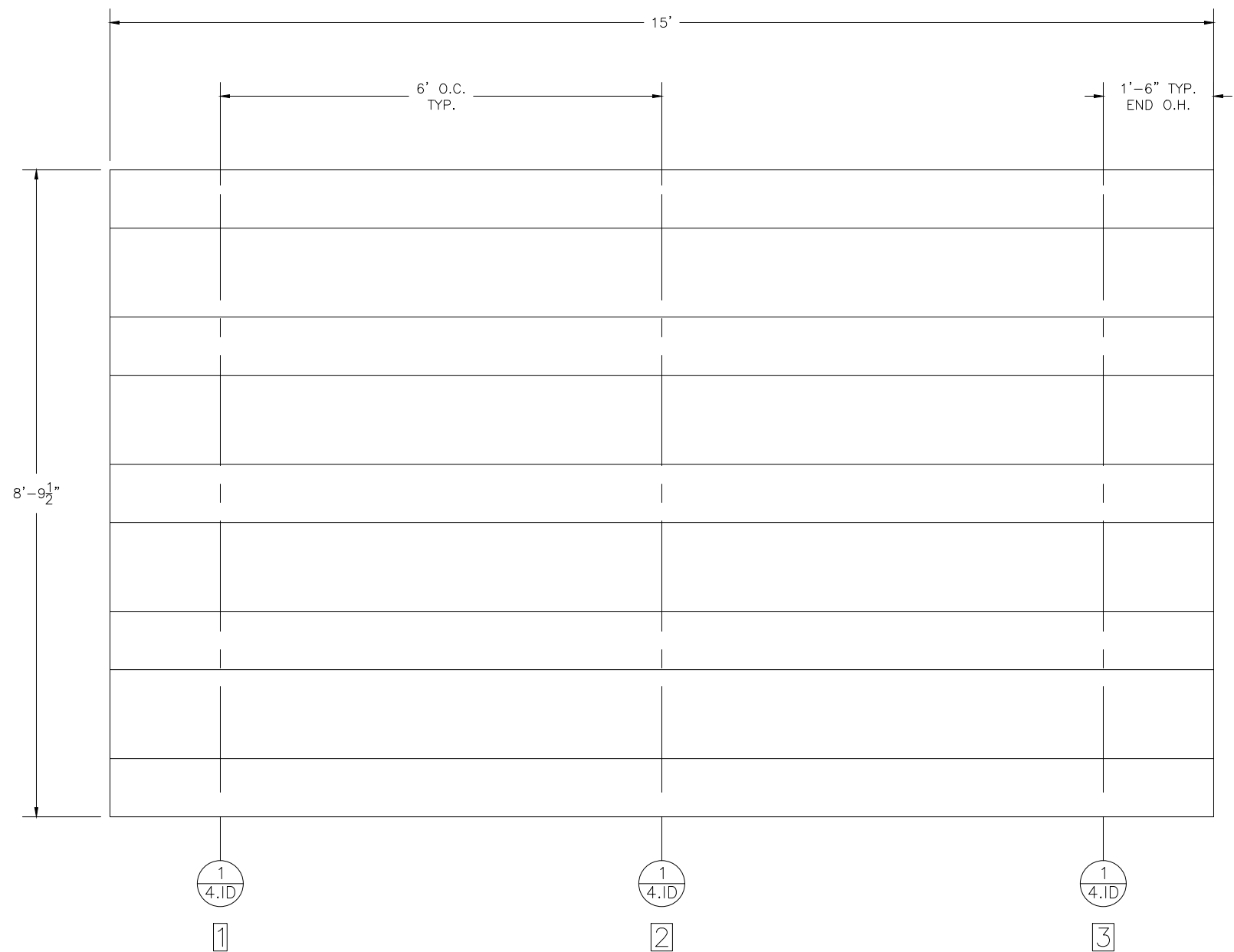



										<div>MATERIAL FINISHES</div> <table><tr><td>SEAT PLANK</td><td>ANODIZED</td></tr><tr><td>FOOT PLANK</td><td>MILL FINISH</td></tr></table>		SEAT PLANK	ANODIZED	FOOT PLANK	MILL FINISH																
SEAT PLANK	ANODIZED																														
FOOT PLANK	MILL FINISH																														
<div>TA-0315PRF</div> <div>NON-ELEV. ALUM 3 ROW x 15'-0" TIERED BLEACHER</div>																															
										<div>DRAWING REFERENCE NUMBER: TA-0315PRF</div> <div>DRAWING SHEET INDEX</div> <table><tr><td>1.CS</td><td>COVER SHEET</td></tr><tr><td>2.TD</td><td>SEATING PLAN</td></tr><tr><td>3.FP</td><td>FOUNDATION PLAN</td></tr><tr><td>4.ID</td><td>FRAME IDENTIFICATION</td></tr><tr><td>5.BA</td><td>BLEACHER ASSEMBLY PREP</td></tr><tr><td>6.BA</td><td>BLEACHER ASSEMBLY – BRACING</td></tr><tr><td>7.BA</td><td>BLEACHER ASSEMBLY SECTION VIEW</td></tr><tr><td>8.AP</td><td>ANCHORING PLAN</td></tr><tr><td>9.PF</td><td>PLANK & FRAMING PLAN</td></tr><tr><td>10.DS</td><td>TYPICAL BLEACHER ASSEMBLY DETAILS</td></tr></table>		1.CS	COVER SHEET	2.TD	SEATING PLAN	3.FP	FOUNDATION PLAN	4.ID	FRAME IDENTIFICATION	5.BA	BLEACHER ASSEMBLY PREP	6.BA	BLEACHER ASSEMBLY – BRACING	7.BA	BLEACHER ASSEMBLY SECTION VIEW	8.AP	ANCHORING PLAN	9.PF	PLANK & FRAMING PLAN	10.DS	TYPICAL BLEACHER ASSEMBLY DETAILS
1.CS	COVER SHEET																														
2.TD	SEATING PLAN																														
3.FP	FOUNDATION PLAN																														
4.ID	FRAME IDENTIFICATION																														
5.BA	BLEACHER ASSEMBLY PREP																														
6.BA	BLEACHER ASSEMBLY – BRACING																														
7.BA	BLEACHER ASSEMBLY SECTION VIEW																														
8.AP	ANCHORING PLAN																														
9.PF	PLANK & FRAMING PLAN																														
10.DS	TYPICAL BLEACHER ASSEMBLY DETAILS																														
<div>RECOMMENDED TOOLS</div> <table><tr><td>SOCKET WRENCH</td><td>POP RIVET GUN</td><td>CORDLESS DRILL</td></tr><tr><td>½" DEEP WELL SOCKET</td><td>LEVEL</td><td>⅝" DRILL BIT</td></tr><tr><td>⅝" DEEP WELL SOCKET</td><td>RUBBER MALLET</td><td>⅞" DRILL BIT</td></tr><tr><td>TAPE MEASURE</td><td>GLOVES</td><td>SAFETY GLASSES</td></tr></table>			SOCKET WRENCH	POP RIVET GUN	CORDLESS DRILL	½" DEEP WELL SOCKET	LEVEL	⅝" DRILL BIT	⅝" DEEP WELL SOCKET	RUBBER MALLET	⅞" DRILL BIT	TAPE MEASURE	GLOVES	SAFETY GLASSES	<div><div><div><div></div><div>NRS</div><div>National Recreation Systems</div><div>A PLAYCORE Company</div></div><div>PH: 888-568-9064 FAX: 260-482-7449 WWW.BLEACHERS.NET</div></div><div>This drawing and all information contained herein is the property of NATIONAL RECREATION SYSTEMS, INC. and is not to be reproduced without the express written permission of this manufacturer. We assume no responsibility for unauthorized use of this drawing. NATIONAL RECREATION SYSTEMS, INC. is not responsible for local permits and occupancy requirements.</div></div>		<div>MODEL: TA-0315PRF</div> <div>DESCRIPTION: NON-ELEV. 3 ROW x 15'-0" ASSEMBLY COVER SHEET</div> <table><tr><td>DRAWN BY: THL</td><td>DATE: 10/16/23</td><td>REVISION: 0</td><td>SCALE: N.T.S.</td><td>SHEET NUMBER: 1.CS</td></tr></table>					DRAWN BY: THL	DATE: 10/16/23	REVISION: 0	SCALE: N.T.S.	SHEET NUMBER: 1.CS					
SOCKET WRENCH	POP RIVET GUN	CORDLESS DRILL																													
½" DEEP WELL SOCKET	LEVEL	⅝" DRILL BIT																													
⅝" DEEP WELL SOCKET	RUBBER MALLET	⅞" DRILL BIT																													
TAPE MEASURE	GLOVES	SAFETY GLASSES																													
DRAWN BY: THL	DATE: 10/16/23	REVISION: 0	SCALE: N.T.S.	SHEET NUMBER: 1.CS																											



SECTION LENGTH	GROSS SEATS	ACTUAL SEATS	NO. OF ROWS	NET SEATS
15	10.00	10.00	5	50
NET SEATS				50
WHEELCHAIR SPACES				0
TOTAL NET SEATING CAPACITY				50
(BASED ON 18" PER SEAT)				

**ECONOMICAL MILL FINISH FOOT PLANK AND RISERS HAVE BEEN SPECIFIED ON THIS BLEACHER DESIGN. NRS WILL NOT BE RESPONSIBLE FOR DISCOLORATION OR STAINING (DARK BLACK, BROWN, OR WHITE RESIDUE) RESULTING FROM UNAVOIDABLE CONDENSATION THAT OCCURS DURING PACKING, TRANSPORTING AND STORAGE, PRECEDING AND/OR DURING INSTALLATION. REMOVAL OF THESE STAINS OR REPLACEMENT OF BOARDS UPON COMPLETION OF INSTALLATION IS NOT PART OF THIS CONTRACT BECAUSE STAINED MILL FINISH BOARDS MEET ALL SPECIFIED REQUIREMENTS. A CLEAR ANODIZED FINISH MAY BE QUOTED AT AN ADDITIONAL COST TO AVOID POTENTIAL DISCOLORATION OR STAINING.



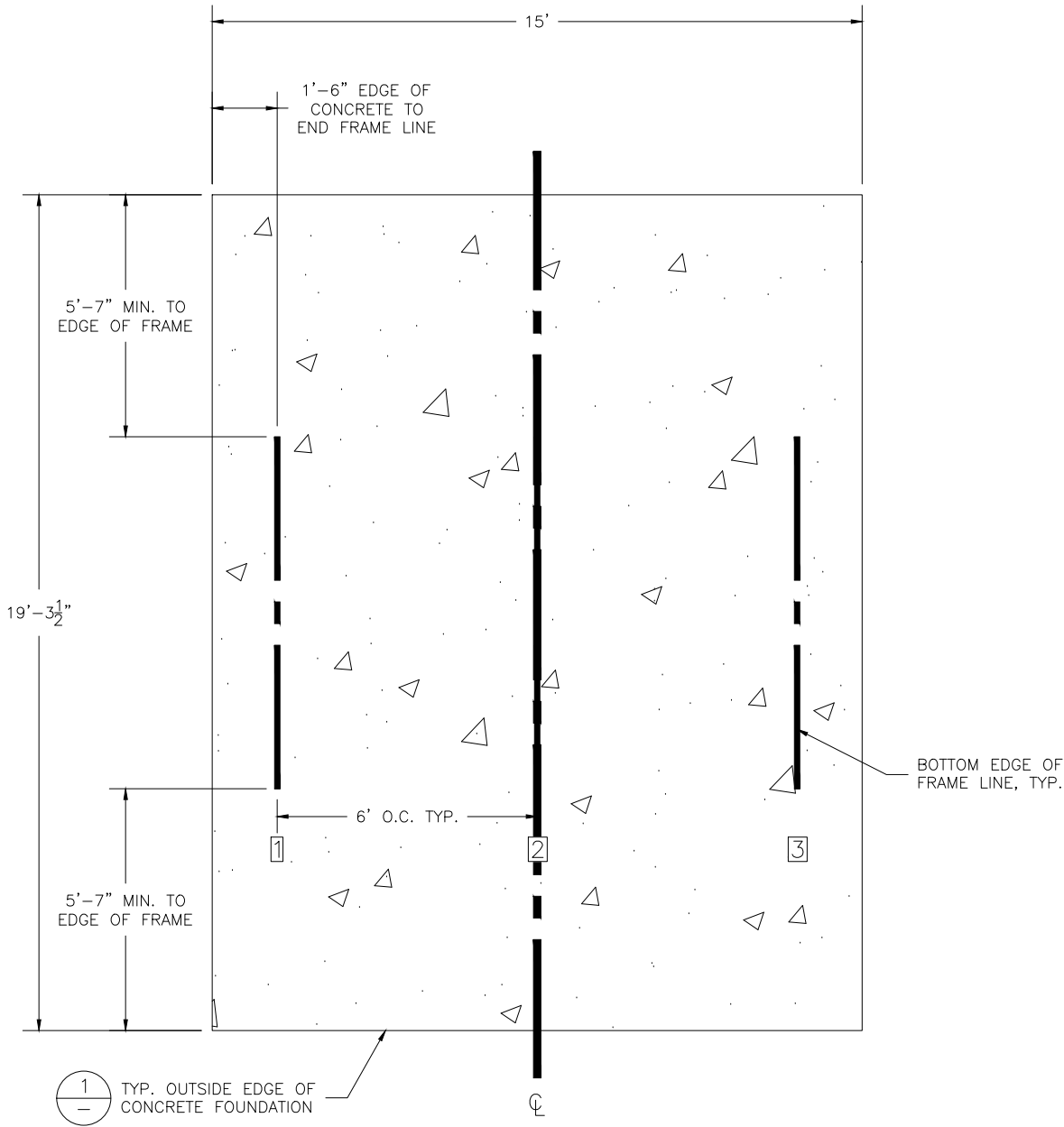
National Recreation Systems

A PLAYCORE Company

PH: 888-568-9064 FAX: 260-482-7449 WWW.BLEACHERS.NET

This drawing and all information contained herein is the property of NATIONAL RECREATION SYSTEMS, INC. and is not to be reproduced without the express written permission of this manufacturer. We assume no responsibility for unauthorized use of this drawing. NATIONAL RECREATION SYSTEMS, INC. is not responsible for local permits and occupancy requirements.

MODEL: TA-0315PRF				
DESCRIPTION: NON-ELEV. 3 ROW x 15'-0" SEATING PLAN				
DRAWN BY: THL	DATE: 10/16/23	REVISION: 0	SCALE: N.T.S.	SHEET NUMBER: 2.TD



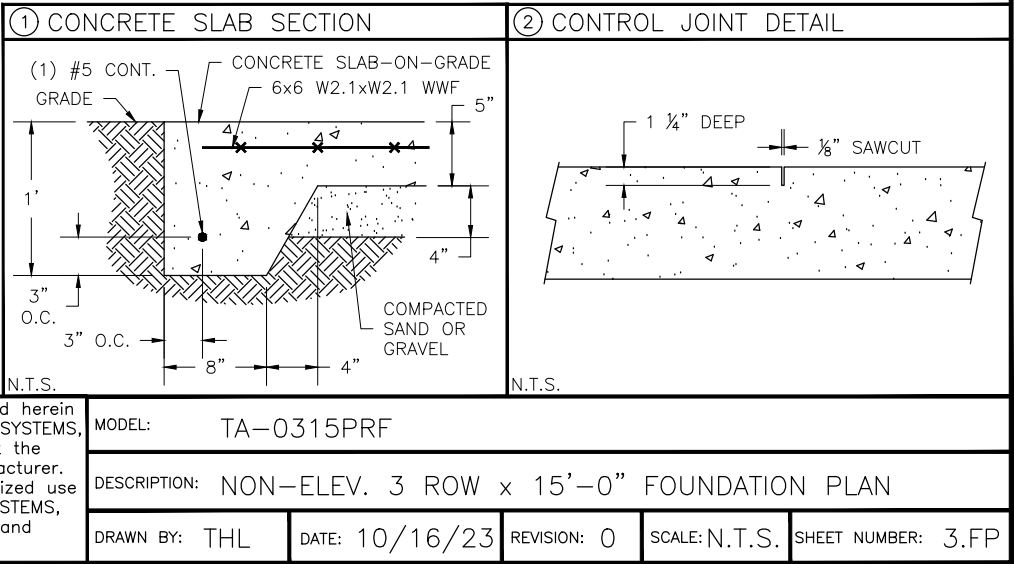
CONCRETE FOUNDATION SPECIFICATIONS

SCOPE:
Foundation construction is not part of NATIONAL RECREATION SYSTEMS, INC's., scope of work unless noted otherwise in the contract documents. The OWNER shall review the foundation design with local code authorities and coordinate with NRS, Inc.

FOUNDATION DESIGN & ANCHORS:
1) The foundation designs are based on the following:
a) Minimum presumed soil bearing of 2000 psf.
b) Bleacher frame dead and live load of 700 lbs./ft.
c) Bleacher frame wind uplift of 250 lbs./ft.
2) Unless otherwise specified on the drawings the bleacher frames shall be attached to concrete with a 1/2" dia. x 3 3/4" wedge type expansion anchor. The anchors shall be embedded a minimum of 2 1/2" into the concrete. All anchors are to be HILTI Kwik Bolt TZ2 or approved equivalent.

CONCRETE SPECIFICATIONS:
1) All concrete construction shall be in accordance with *ACI 318.14*.
2) All concrete shall be air-entrained using an air entraining admixtruing meeting *ASTM C620*. Total air content: 5%-7% per *ASTM C173*.
3) All concrete shall have a minimum 28-day strength of Fc=3000psi. Concrete shall have air-entrainment
4) A 1/4" bituminous expansion joint material shall be placed between strip and slab foundations when adjacent to each other.
5) The depressions in the top of the foundations between high spots shall not exceed 3/16" below 10-foot long straightedge. The 10-foot straightedge method used to measure foundation flatness shall be in accordance with *ACI 302.1R-04 "Guide for Concrete Floor and Slab Construction"*.

CONCRETE SLAB RECOMMENDED SPECIFICATIONS:
1) Concrete slab shall have a minimum thickness of 5" (some areas may require 6") and placed on 4" of compacted gravel or compacted sub base.
2) NRS, INC., recommends that the concrete slab be reinforced with 6x6-W2.1xW2.1 welded wire fabric at 1 1/2" concrete cover from the top. In lieu of welded wire fabric, steel fiber substitution requires OWNER approval and his understanding of potential maintenance issues.
3) Contractor may substitute blended fiber reinforcing, provided the blend consists of multifilament polypropylene fibers and cold drawn steel wire fibers. Novamesh 950 or approved equivalent, applied at a dosage rate of 5lb/CY unless specified otherwise or a different recommendation is made by the manufacturer.
4) Crack control joints shall be sawed into slab to form approximate square patterns. The maximum spacing for control joints shall not exceed 13'-6", UNLESS INDICATED OTHERWISE. The bleacher frames shall not be set on control joints. The designer shall contact NRS to coordinate joint spacing requirements with the specific bleacher design.
5) The slab may be sloped a maximum of 1/8 inch per foot for drainage. The maximum overall out of level slope for the slab perpendicular to the seats (front to rear) shall not exceed 2" and parallel to the seats (end to end) shall not exceed 4".

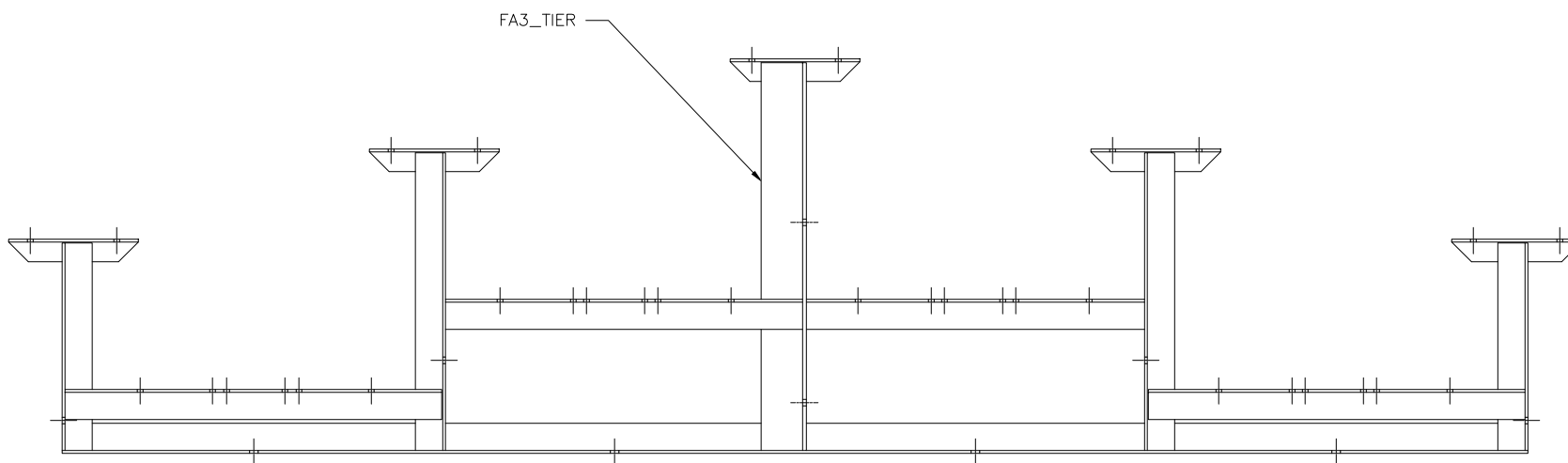


PH: 888-568-9064 FAX: 260-482-7449 WWW.BLEACHERS.NET

This drawing and all information contained herein is the property of NATIONAL RECREATION SYSTEMS, INC. and is not to be reproduced without the express written permission of this manufacturer. We assume no responsibility for unauthorized use of this drawing. NATIONAL RECREATION SYSTEMS, INC. is not responsible for local permits and occupancy requirements.

1
4.ID

FRAME LINES 1, 2, 3



PH: 888-568-9064 FAX: 260-482-7449 WWW.BLEACHERS.NET

This drawing and all information contained herein is the property of NATIONAL RECREATION SYSTEMS, INC. and is not to be reproduced without the express written permission of this manufacturer. We assume no responsibility for unauthorized use of this drawing. NATIONAL RECREATION SYSTEMS, INC. is not responsible for local permits and occupancy requirements.

MODEL: TA-0315PRF

DESCRIPTION: NON-ELEV. 3 ROW x 15'-0" FRAME IDENTIFICATION

DRAWN BY: THL

DATE: 10/16/23

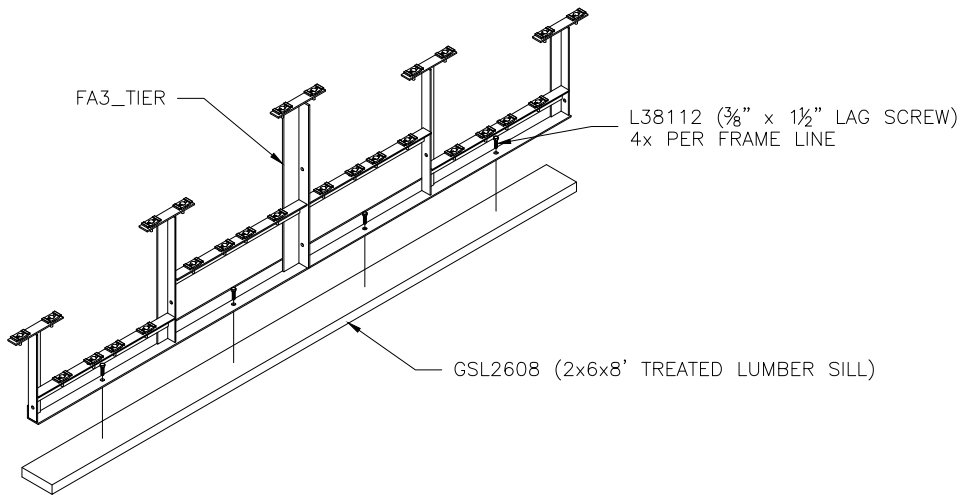
REVISION: 0

SCALE: N.T.S.

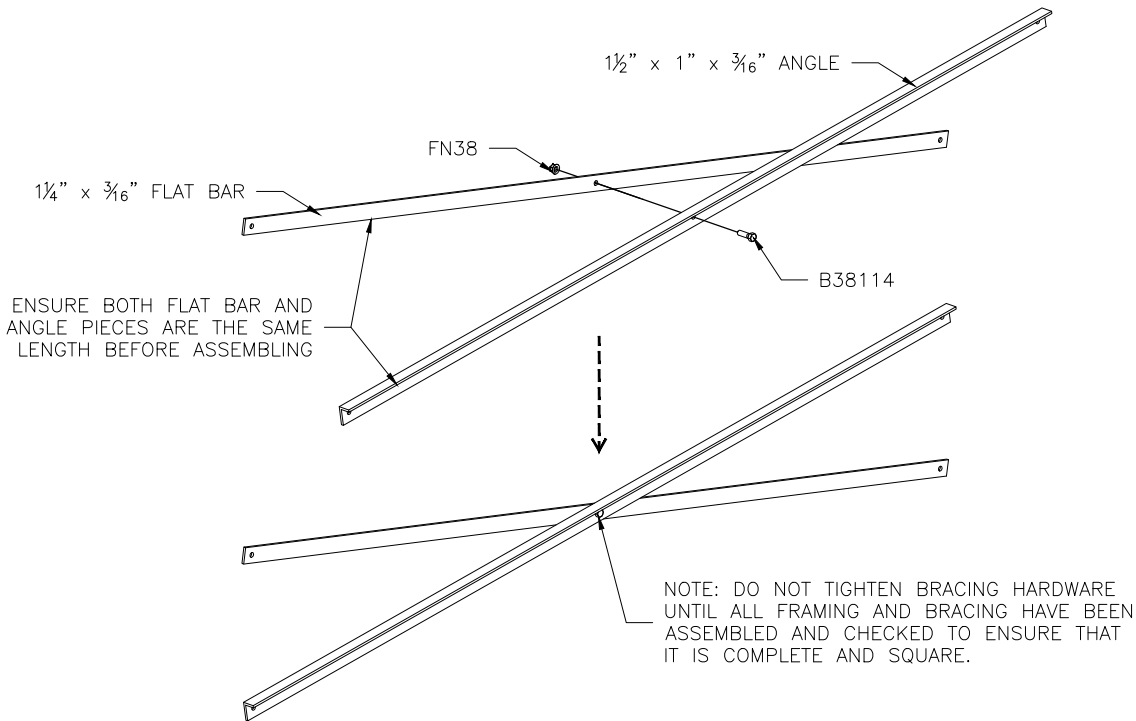
SHEET NUMBER: 4.ID

(OPTIONAL) ATTACH GROUND SILLS *

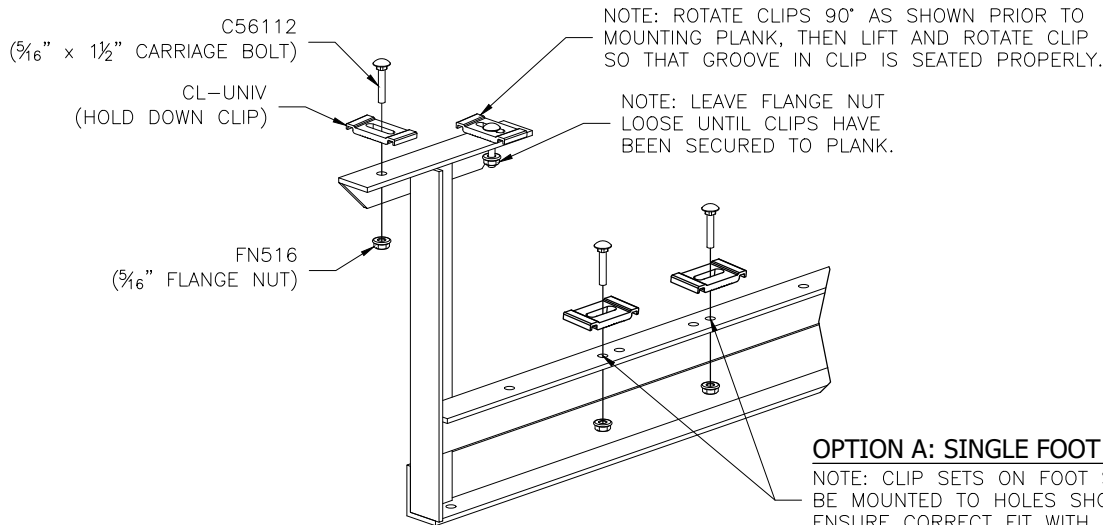
*NOT ALL BLEACHERS WILL RECEIVE GROUND SILLS. IF YOUR UNIT DOES NOT INCLUDE THIS FEATURE, SKIP THIS STEP.



PRE-ASSEMBLE X-BRACE PAIR(S)

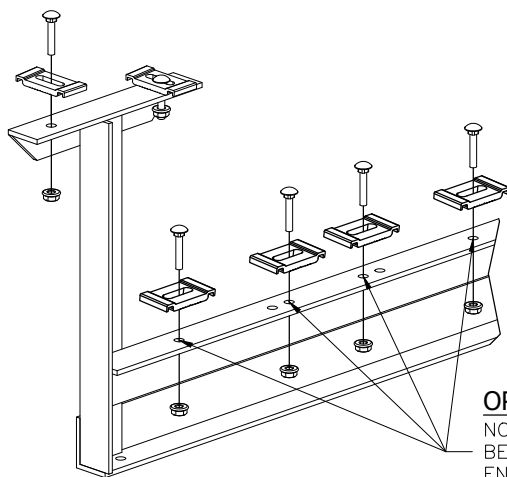


ONCE FRAMING IS COMPLETE,
PRE-ASSEMBLE CLIP SETS ON BLEACHER FRAMES



OPTION A: SINGLE FOOT BOARDS

NOTE: CLIP SETS ON FOOT SUPPORTS MUST BE MOUNTED TO HOLES SHOWN HERE TO ENSURE CORRECT FIT WITH FOOT PLANK.



OPTION B: DOUBLE FOOT BOARDS

NOTE: CLIP SETS ON FOOT SUPPORTS MUST BE MOUNTED TO HOLES SHOWN HERE TO ENSURE CORRECT FIT WITH FOOT PLANK.



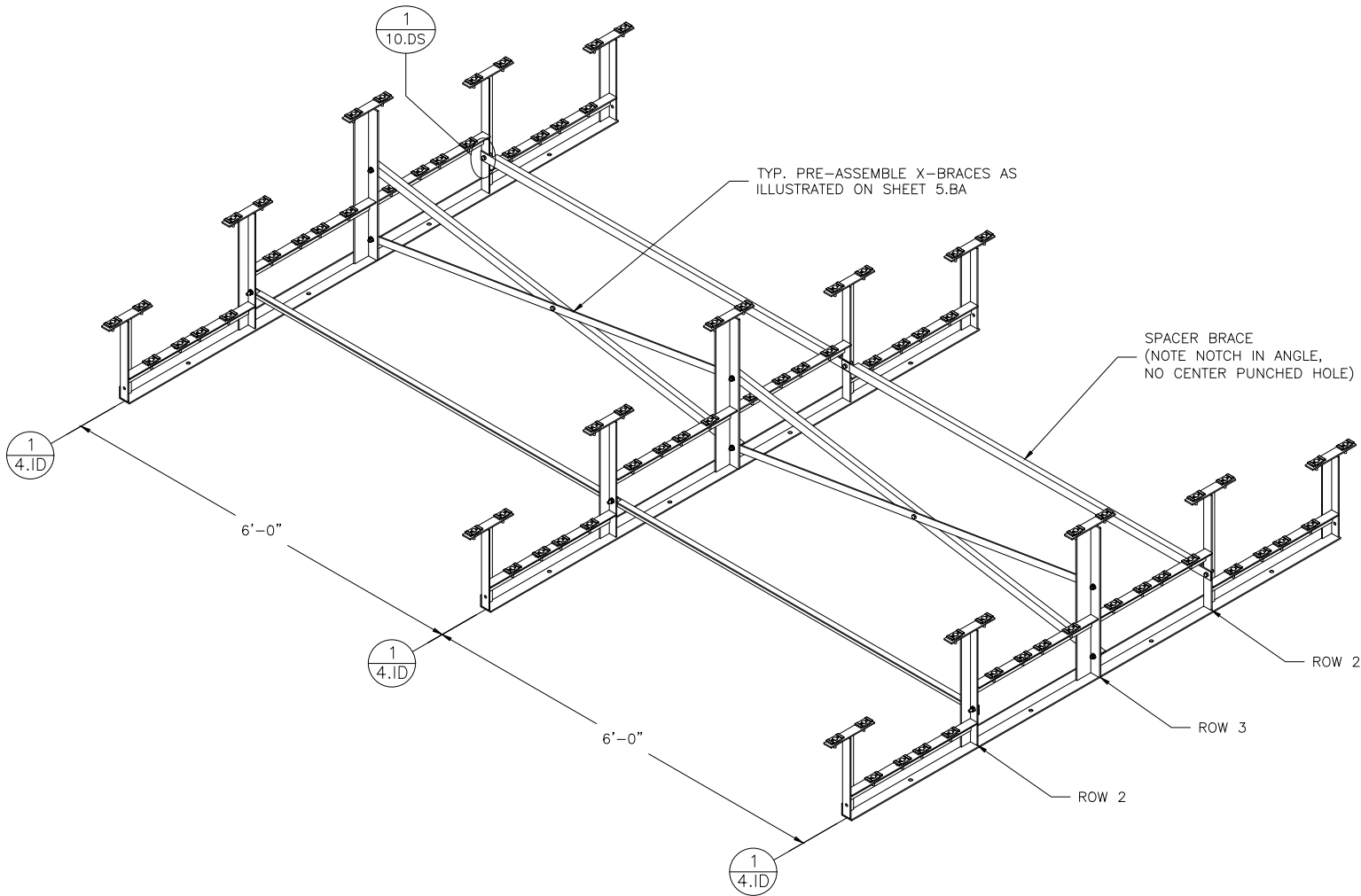
PH: 888-568-9064 FAX: 260-482-7449 WWW.BLEACHERS.NET

This drawing and all information contained herein is the property of NATIONAL RECREATION SYSTEMS, INC. and is not to be reproduced without the express written permission of this manufacturer. We assume no responsibility for unauthorized use of this drawing. NATIONAL RECREATION SYSTEMS, INC. is not responsible for local permits and occupancy requirements.

MODEL: TA-0315PRF		DESCRIPTION: NON-ELEV. 3 ROW x 15'-0" ASSEMBLY PREP			
DRAWN BY: THL	DATE: 10/16/23	REVISION: 0	SCALE: N.T.S.	SHEET NUMBER: 5.BA	

BRACING CHART

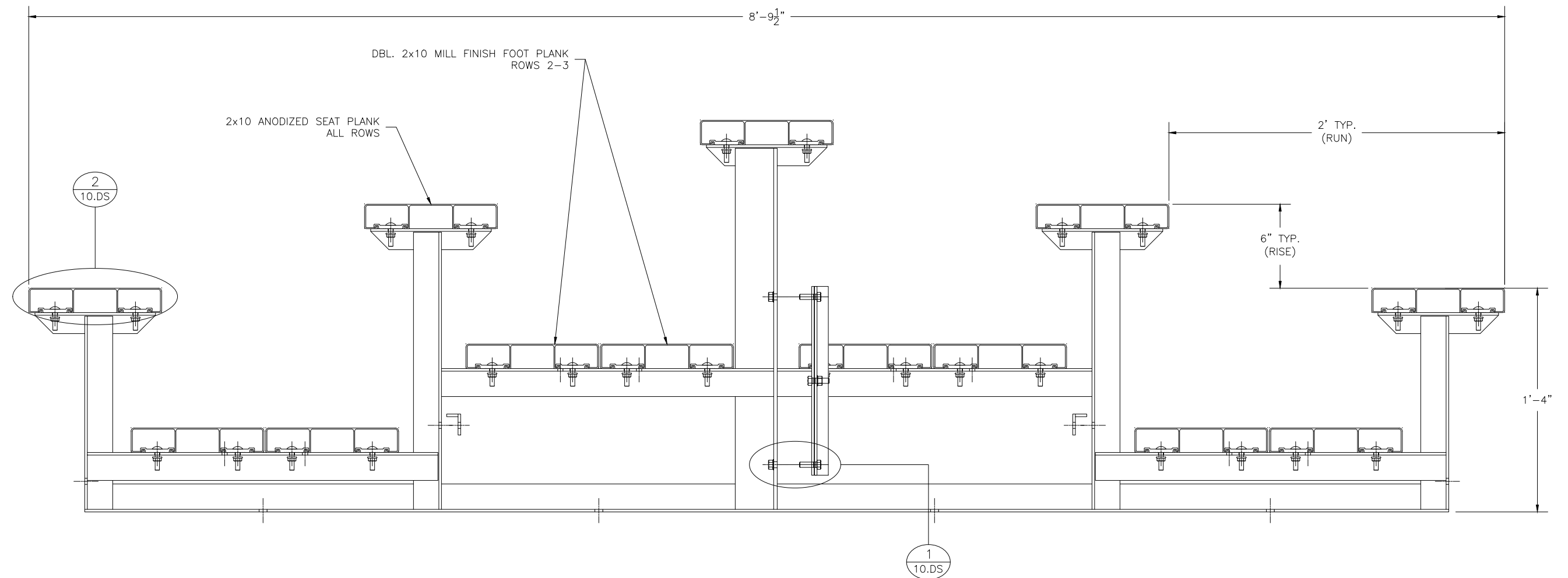
	ROW 2	ROW 3
6'-0" CLOSED BAY*	6'-1½" SPACER BRACE	6'-2½" X-BRACE



PH: 888-568-9064 FAX: 260-482-7449 WWW.BLEACHERS.NET

This drawing and all information contained herein is the property of NATIONAL RECREATION SYSTEMS, INC. and is not to be reproduced without the express written permission of this manufacturer. We assume no responsibility for unauthorized use of this drawing. NATIONAL RECREATION SYSTEMS, INC. is not responsible for local permits and occupancy requirements.

MODEL: TA-0315PRF				
DESCRIPTION: NON-ELEV. 3 ROW x 15'-0" ASSEMBLY - BRACING				
DRAWN BY: THL	DATE: 10/16/23	REVISION: 0	SCALE: N.T.S.	SHEET NUMBER: 6.BA



PH: 888-568-9064 FAX: 260-482-7449 WWW.BLEACHERS.NET

This drawing and all information contained herein is the property of NATIONAL RECREATION SYSTEMS, INC. and is not to be reproduced without the express written permission of this manufacturer. We assume no responsibility for unauthorized use of this drawing. NATIONAL RECREATION SYSTEMS, INC. is not responsible for local permits and occupancy requirements.

MODEL: TA-0315PRF

DESCRIPTION: NON-ELEV. 3 ROW x 15'-0" ASSEMBLY SECTION VIEW

DRAWN BY: THL

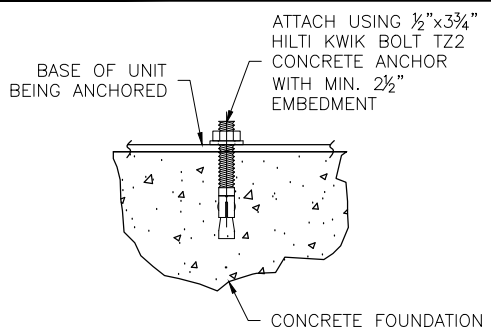
DATE: 10/16/23

REVISION: 0

SCALE: N.T.S.

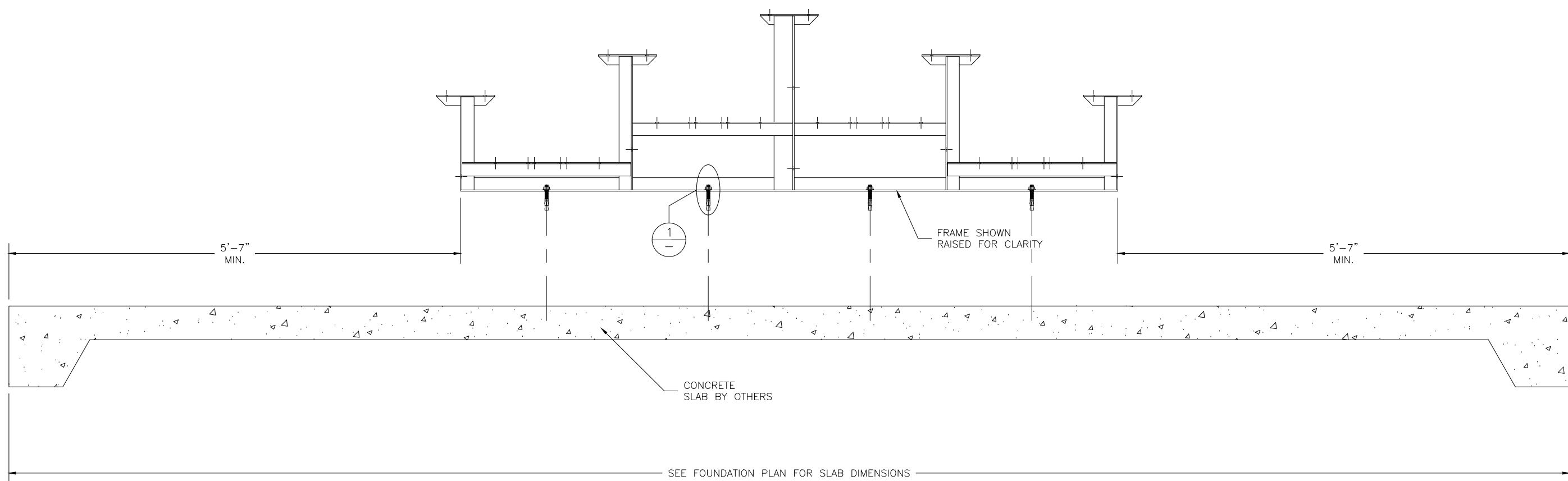
SHEET NUMBER: 7.BA

① WEDGE ANCHOR DETAIL — 3 3/4"



N.T.S.

(OPTIONAL) ANCHOR BLEACHER TO CONCRETE FOUNDATION *



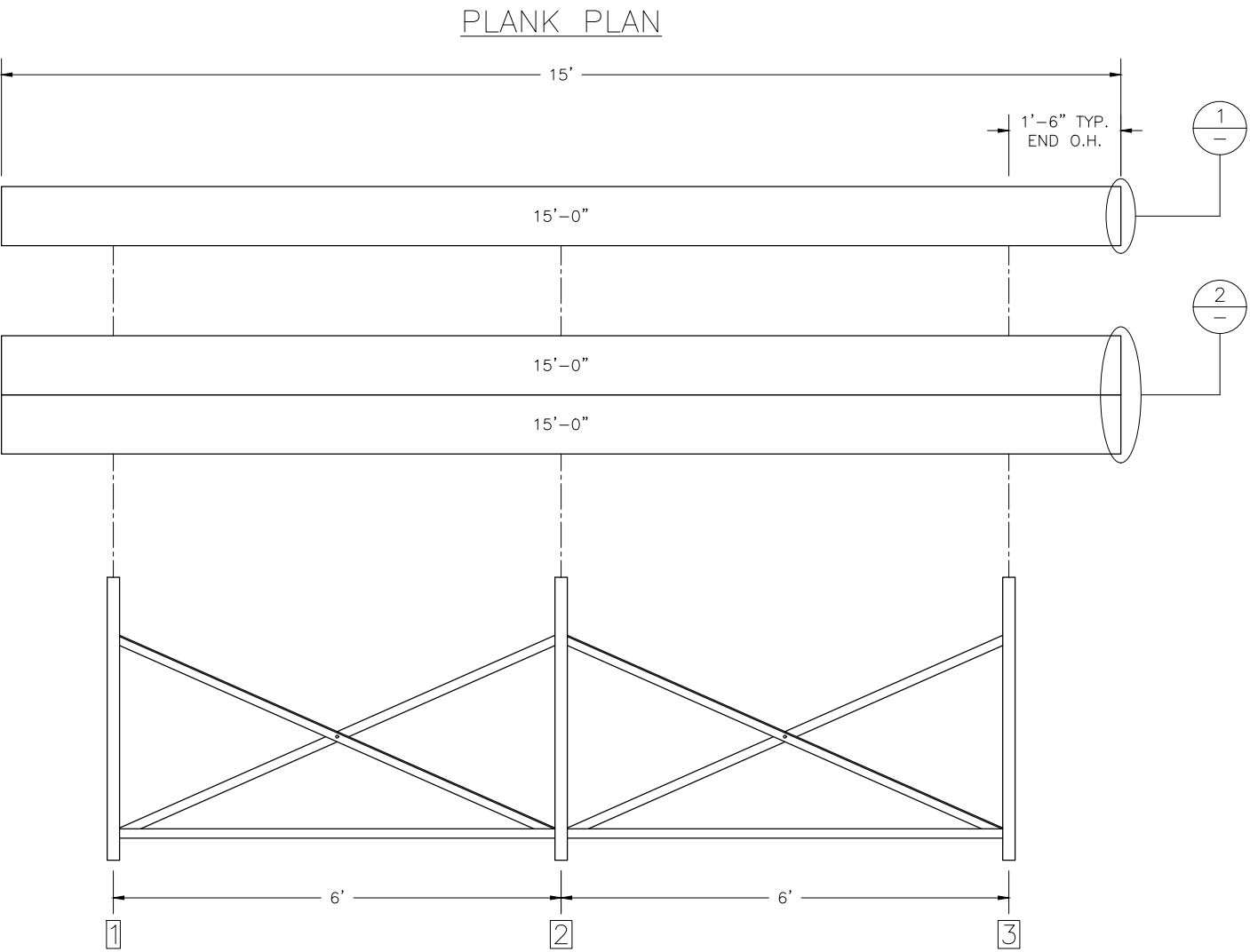
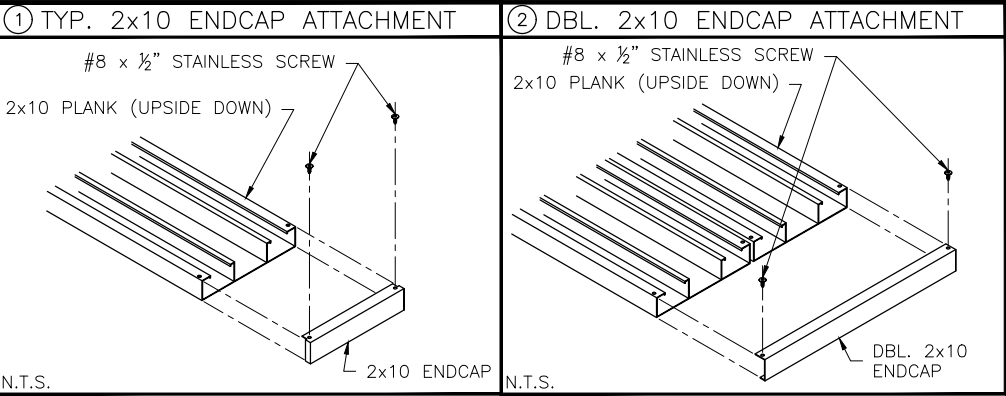
* CONCRETE WEDGE ANCHORS NOT INCLUDED WITH ALL UNITS. IF USING OTHER ANCHORING SYSTEM, SKIP THIS STEP AND REFER TO INSTRUCTIONS SPECIFIC TO THE ANCHORING SYSTEM PURCHASED FOR YOUR UNIT.



PH: 888-568-9064 FAX: 260-482-7449 WWW.BLEACHERS.NET

This drawing and all information contained herein is the property of NATIONAL RECREATION SYSTEMS, INC. and is not to be reproduced without the express written permission of this manufacturer. We assume no responsibility for unauthorized use of this drawing. NATIONAL RECREATION SYSTEMS, INC. is not responsible for local permits and occupancy requirements.

MODEL: TA-0315PRF				
DESCRIPTION: NON-ELEV. 3 ROW BLEACHER ANCHORING PLAN				
DRAWN BY: THL	DATE: 10/16/23	REVISION: 0	SCALE: N.T.S.	SHEET NUMBER: 8, AP



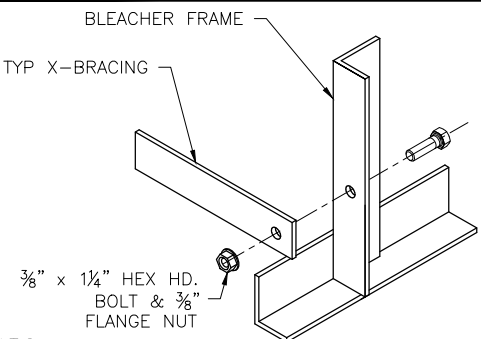
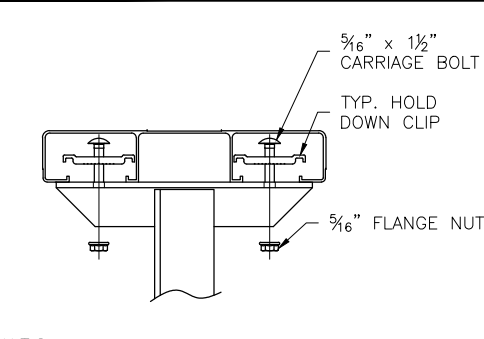
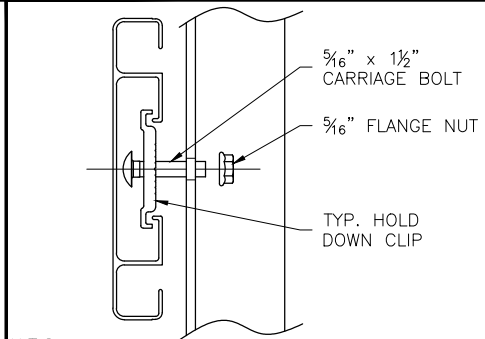
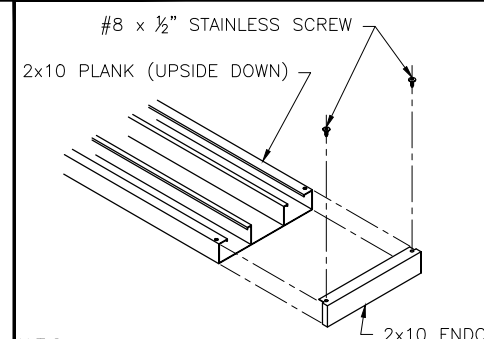
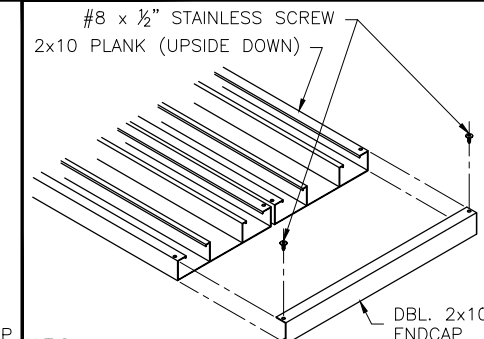
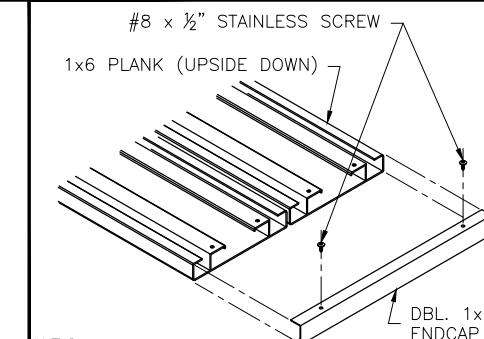
**ECONOMICAL MILL FINISH FOOT PLANK AND RISERS HAVE BEEN SPECIFIED ON THIS BLEACHER DESIGN. NRS WILL NOT BE RESPONSIBLE FOR DISCOLORATION OR STAINING (DARK BLACK, BROWN, OR WHITE RESIDUE) RESULTING FROM UNAVOIDABLE CONDENSATION THAT OCCURS DURING PACKING, TRANSPORTING AND STORAGE, PRECEDING AND/OR DURING INSTALLATION. REMOVAL OF THESE STAINS OR REPLACEMENT OF BOARDS UPON COMPLETION OF INSTALLATION IS NOT PART OF THIS CONTRACT BECAUSE STAINED MILL FINISH BOARDS MEET ALL SPECIFIED REQUIREMENTS. A CLEAR ANODIZED FINISH MAY BE QUOTED AT AN ADDITIONAL COST TO AVOID POTENTIAL DISCOLORATION OR STAINING.



PH: 888-568-9064 FAX: 260-482-7449 WWW.BLEACHERS.NET

This drawing and all information contained herein is the property of NATIONAL RECREATION SYSTEMS, INC. and is not to be reproduced without the express written permission of this manufacturer. We assume no responsibility for unauthorized use of this drawing. NATIONAL RECREATION SYSTEMS, INC. is not responsible for local permits and occupancy requirements.

MODEL: TA-0315PRF				
DESCRIPTION: NON-ELEV. 3 ROW x 15'-0" PLANK & FRAMING PLAN				
DRAWN BY: THL	DATE: 10/16/23	REVISION: 0	SCALE: N.T.S.	SHEET NUMBER: 9.PF

<p>① TYP. BRACE CONN. — 1¼ BOLT</p>  <p>BLEACHER FRAME</p> <p>TYP X-BRACING</p> <p>3/8" x 1¼" HEX HD. BOLT & 3/8" FLANGE NUT</p> <p>N.T.S.</p>	<p>② TYP. 2x10 PLANK ATTACHMENT</p>  <p>5/16" x 1½" CARRIAGE BOLT</p> <p>TYP. HOLD DOWN CLIP</p> <p>5/16" FLANGE NUT</p> <p>N.T.S.</p>	<p>③ TYP. 1x6 PLANK ATTACHMENT</p>  <p>5/16" x 1½" CARRIAGE BOLT</p> <p>5/16" FLANGE NUT</p> <p>TYP. HOLD DOWN CLIP</p> <p>N.T.S.</p>	<p>④ TYP. 2x10 ENDCAP ATTACHMENT</p>  <p>#8 x ½" STAINLESS SCREW</p> <p>2x10 PLANK (UPSIDE DOWN)</p> <p>2x10 ENDCAP</p> <p>N.T.S.</p>	<p>⑤ DBL. 2x10 ENDCAP ATTACHMENT</p>  <p>#8 x ½" STAINLESS SCREW</p> <p>2x10 PLANK (UPSIDE DOWN)</p> <p>DBL. 2x10 ENDCAP</p> <p>N.T.S.</p>	<p>⑥ DBL. 1x6 ENDCAP ATTACHMENT</p>  <p>#8 x ½" STAINLESS SCREW</p> <p>1x6 PLANK (UPSIDE DOWN)</p> <p>DBL. 1x6 ENDCAP</p> <p>N.T.S.</p>
-------------------------------------------------------------------------------------------------------------------------------------------------------------------------------------------------------------------------------------	--------------------------------------------------------------------------------------------------------------------------------------------------------------------------------------------------------------------------	--------------------------------------------------------------------------------------------------------------------------------------------------------------------------------------------------------------------------	--------------------------------------------------------------------------------------------------------------------------------------------------------------------------------------------------------------------------	-------------------------------------------------------------------------------------------------------------------------------------------------------------------------------------------------------------------------------	----------------------------------------------------------------------------------------------------------------------------------------------------------------------------------------------------------------------------



 <p>National Recreation Systems</p> <p>A PLAYCORE Company</p> <p>PH: 888-568-9064 FAX: 260-482-7449 WWW.BLEACHERS.NET</p>		<p>This drawing and all information contained herein is the property of NATIONAL RECREATION SYSTEMS, INC. and is not to be reproduced without the express written permission of this manufacturer. We assume no responsibility for unauthorized use of this drawing. NATIONAL RECREATION SYSTEMS, INC. is not responsible for local permits and occupancy requirements.</p>		MODEL: TA-0315PRF			
		DESCRIPTION: TYPICAL BLEACHER ASSEMBLY DETAILS					
		DRAWN BY: THL	DATE: 10/16/23	REVISION: 0	SCALE: N.T.S.	SHEET NUMBER: 10.DS	