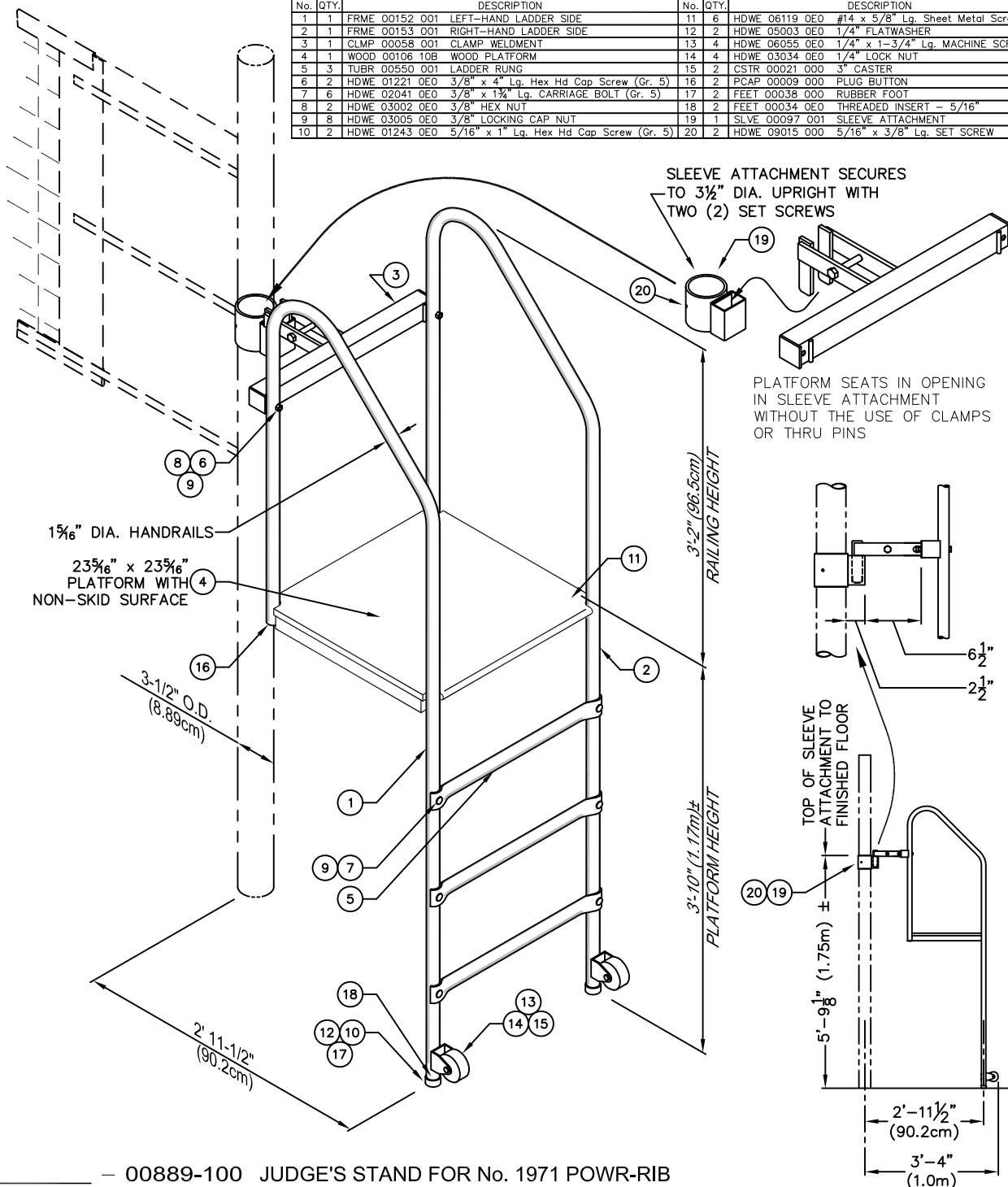


FITTED JUDGE'S STAND

PARTS LIST - No. 00889-100									
No.	QTY.	DESCRIPTION				No.	QTY.	DESCRIPTION	
1	1	FRME	00152	001	LEFT-HAND LADDER SIDE	11	6	HDWE	06119 0EO #14 x 5/8" Lg. Sheet Metal Screw
2	1	FRME	00153	001	RIGHT-HAND LADDER SIDE	12	6	HDWE	05003 0EO 1/4" FLATWASHER
3	1	CLMP	00056	001	CLAMP WELDMENT	13	4	HDWE	06055 0EO 1/4" x 1-3/4" Lg. MACHINE SCREW
4	1	WOOD	00106	10B	WOOD PLATFORM	14	4	HDWE	03034 0EO 1/4" LOCK NUT
5	3	TUBR	00550	001	LADDER RUNG	15	2	CSTR	00021 000 3" CASTER
6	2	HDWE	01221	0EO	3/8" x 4" Lg. Hex Hd Cap Screw (Gr. 5)	16	2	PCAP	00009 000 PLUG BUTTON
7	6	HDWE	02041	0EO	3/8" x 1 1/2" Lg. CARRIAGE BOLT (Gr. 5)	17	2	FEET	00038 000 RUBBER FOOT
8	2	HDWE	03002	0EO	3/8" HEX NUT	18	2	FEET	00034 0EO THREADED INSERT - 5/16"
9	8	HDWE	03005	0EO	3/8" LOCKING CAP NUT	19	1	SLVE	00097 001 SLEEVE ATTACHMENT
10	2	HDWE	01243	0EO	5/16" x 1" Lg. Hex Hd Cap Screw (Gr. 5)	20	1	HDWE	09015 000 5/16" x 3/8" Lg. SET SCREW



— 00889-100 JUDGE'S STAND FOR No. 1971 POWR-RIB

– 9931xx

SET OF PROTECTIVE PADS FOR
No. 00889-100 JUDGE'S STAND
(CUSTOM COLORS AVAILABLE - SEE PAGE No. V-993-1)

The Porter logo, featuring the word "porter" in a stylized, outlined font.

888-277-7778 PORTER@PORTERATHLETIC.COM
©COPYRIGHT 2012 PORTER ATHLETIC - ALL RIGHTS RESERVED

PROJECT NUMBER

PROJECT NAME

porter
www.porterathletic.com/facility

WWW.PORTERATHLETIC.COM/FACILITY

VOLLEYBALL SPECIFICATION SHEET

V-889-1

8/28/2013

00889100 - JUDGE'S STAND

FITTED JUDGE'S STAND

SPECIFICATIONS

PORTER No. 00889-100 JUDGE'S STAND

Judge's Stand shall be designed to attach to the 3-1/2" (8.9cm) O.D. upright of the No. 1971 / 1951 / 851 3-1/2 sleeve-type, No. 1973 3" sleeve-type, and 1975 / 1955 / 855 portable volleyball systems. Attachment to upright shall be by means of a special sleeve attachment, which is permanently secured in place at the proper height by means of locking-type set screws. Judge's Stand assembly shall be designed with a special attachment fitting to seat in a cavity of the sleeve attachment mounted on the 3-1/2" (8.9cm) O.D. upright without the use of additional clamps.

Platform support side frames shall consist of formed 1-5/16" (3.3cm) O.D. steel tube handrail/ladder sections with a heavy angle weldment for the support of the platform. Formed handrails shall extend 38" (96.5cm) above the platform. Three (3) special, formed, 1-5/16" (3.3cm) O.D. ladder rung sections shall be equally spaced to allow for ease of mounting platform. Lower end of ladder side frames shall be equipped with heavy-duty diameter, nonmarking rubber pads. Side frames are also equipped with 3" (7.6cm) diameter, non-marking caster wheels positioned for ease of tipping and transporting to storage areas. Side frames and ladder rungs shall be finished in a durable powder-coated finish.

Platform shall be 23-5/16" x 23-5/16" (59.2cm x 59.2cm), constructed of a high quality 3/4" (1.9cm) thick birch laminate, with a reinforced understructure. Platform shall be finished in a clear lacquer with a non-slip top surface. Top of platform shall be positioned 3'-10" (1.17m) above playing surface when in use.

OPTIONAL ITEMS TO SPECIFY

See Page No. V-993-1 for specifications on Porter No. 9931xx Set of Protective Pads.