

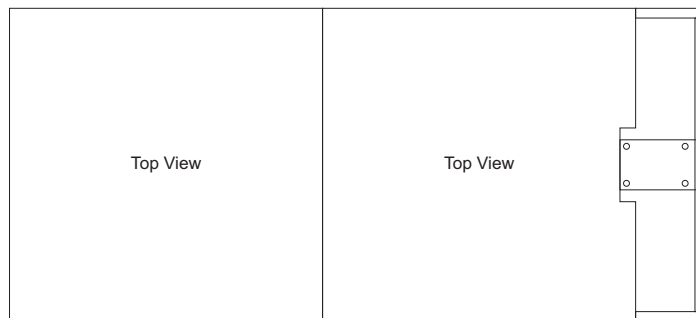
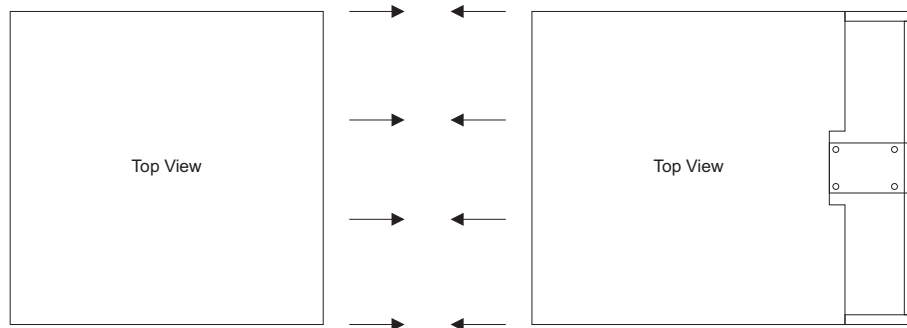
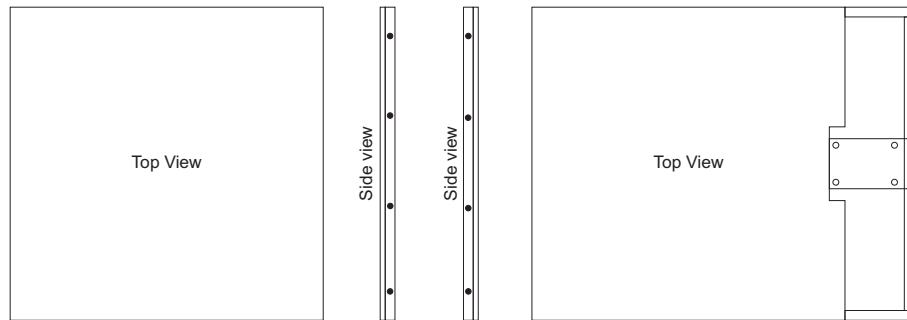


use 4 - 3/8" x 1 1/2" bolts & nuts

Locate Ends of platform with 4 holes located
in the sides of the metal frame.

Place these ends side by side tilt both platforms
on their edges and install 4 bolts and nuts and tighten.

Carefully lower joined platforms to ground.



CONTACT FISHER ATHLETIC IF ALL ITEMS ARE NOT PRESENT

P.O. Box 1985 SALISBURY, NC 28145
PHONE 800-438-6028 \ FAX 800-272-4448
WWW.FISHERATHLETIC.COM