



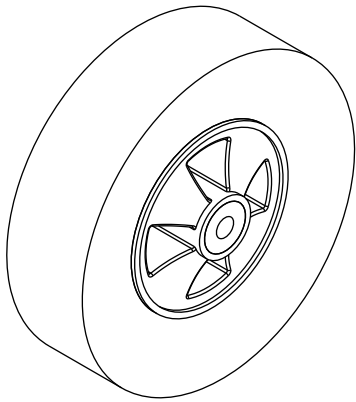
Most Kwik Goal products carry a **Lifetime Guarantee**. For details or claims, visit [kwikgoal.com](http://kwikgoal.com) or contact customer service at 1-800-531-4252.

## ASSEMBLY INSTRUCTIONS FOR 10B410 (WHEEL OPTION FOR EUROPEAN CLUB GOALS)

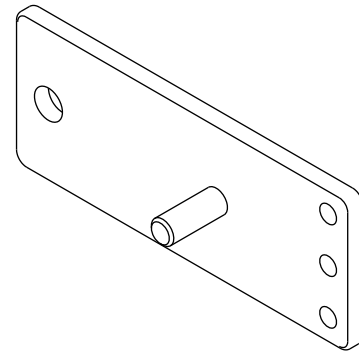
1. Unpack all parts and check for damage that may have occurred during shipping. If damage has occurred, notify trucking company immediately. Lay out all parts. Remove all cardboard and packaging immediately. Wet or damp packaging may damage contents.
2. Read through entire instruction before beginning assembly and installation.

### Parts

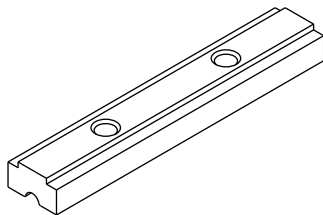
Tire and Wheel Assembly (4)  
(Part# VZ349)



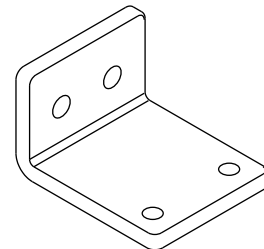
Stop Plate (4)  
(Part# UZ1254)



Threaded Channel Spacer (4)  
(Part# UZ691)



Mounting Bracket (4)  
(Part# UZ1001)



### \*\*\*CAUTION\*\*\*

This goal has been designed to be used for the game of soccer only. Goal posts must be anchored **AT ALL TIMES** and shall be secured against overturning. Do not climb on the net or goal framework at any time! All fastenings must be checked to insure they are fully tightened before and after each use of this product. Goal posts not in use must be disassembled and properly stored in a safe, secure area (See included Guidelines for Moveable Soccer Goal Safety.).

Assembled goal posts should not be left unattended. Remove nets when goals are not in use. Do not use this equipment during the threat of high winds. Goal posts should be checked for safety before and after each use. All warning and safety labels included with this product must be visible at all times.  
Any modifications to this or any Kwik Goal product will void any and all warranties.

## Hardware

Note: Hardware may be packaged separately in one or more boxes. Open all packages before beginning assembly.

3/8" x 1" Hex Bolt (Part# TZ1)	(8)
3/8" x 3/4" Socket Head Capscrew (Part# TZ208)	(4)
3/8" Lock Washer (Part# TZ65)	(8)
3/8" Flat Washer (Part# TZ60)	(8)
3/8" Lock Nut (Part# TZ370)	(4)
1/2" Flat Washer (Part# TZ297)	(4)
1/2" Lock Nut (Part# TZ28)	(4)
5/8" x 3 1/2" Hex Bolt (Part# TZ369)	(4)
5/8" Lock Nut (Part# TZ294)	(4)
5/8" Jam Nut (Part# TZ108)	(4)
Large Nylon Washer (Part# TZ204)	(4)
Anti-Seize (Part# VZ327)	(1)

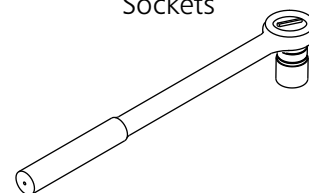
## Assembly Tools

9/16", 3/4" & 15/16" Wrenches



AND

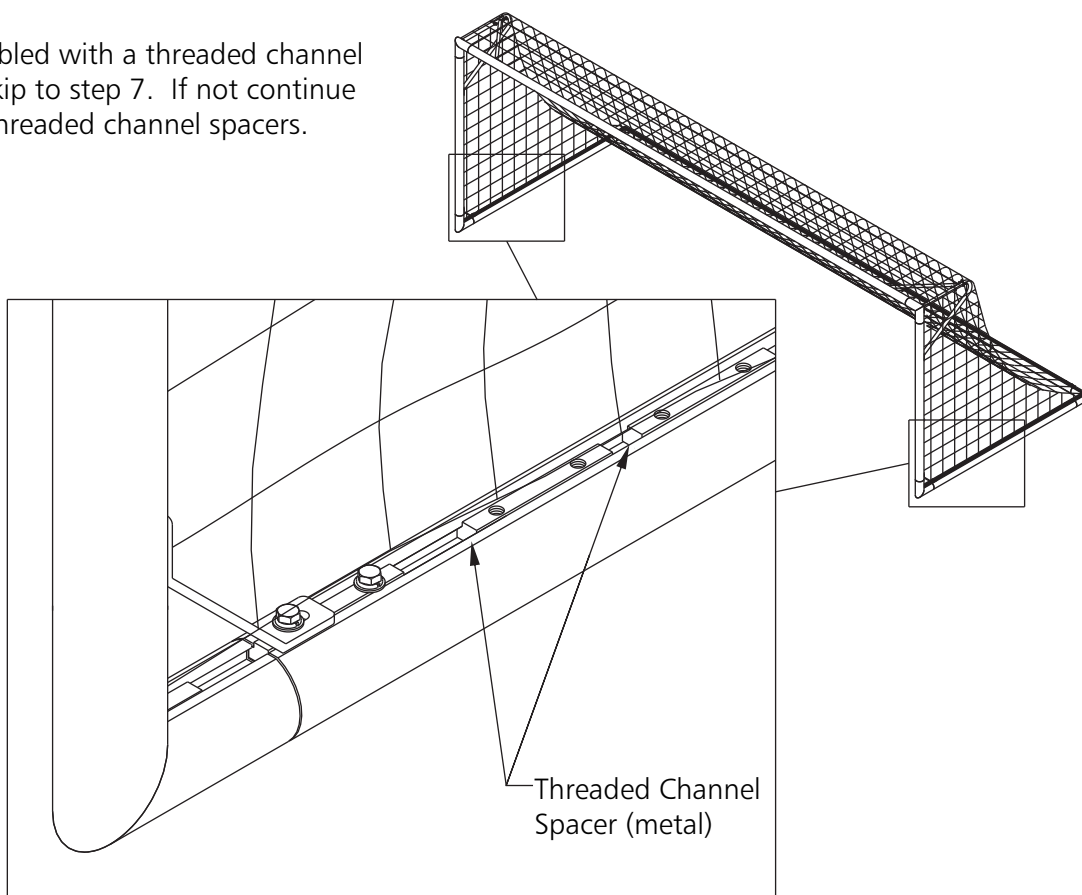
Ratchet with 9/16", 3/4" & 15/16" Sockets



5/16" Hex Wrench



3. If goal has been assembled with a threaded channel spacer in each base, skip to step 7. If not continue with step 4 to install threaded channel spacers.



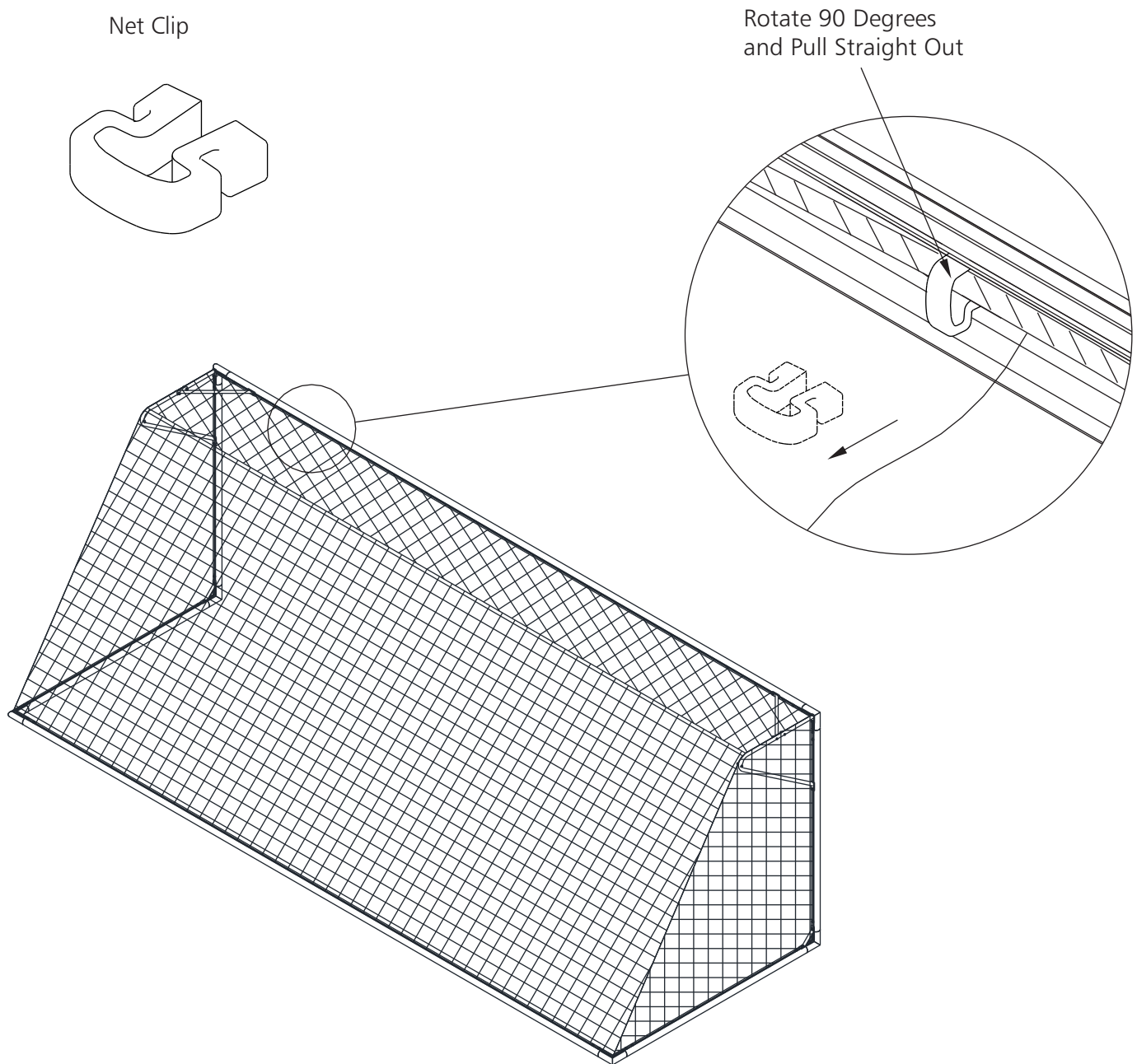
\*\*\*CAUTION\*\*\*

This goal has been designed to be used for the game of soccer only. Goal posts must be anchored AT ALL TIMES and shall be secured against overturning. Do not climb on the net or goal framework at any time! All fastenings must be checked to insure they are fully tightened before and after each use of this product. Goal posts not in use must be disassembled and properly stored in a safe, secure area (See included Guidelines for Moveable Soccer Goal Safety.).

Assembled goal posts should not be left unattended. Remove nets when goals are not in use. Do not use this equipment during the threat of high winds. Goal posts should be checked for safety before and after each use. All warning and safety labels included with this product must be visible at all times.

Any modifications to this or any Kwik Goal product will void any and all warranties.

4. Remove net clips from base frame.



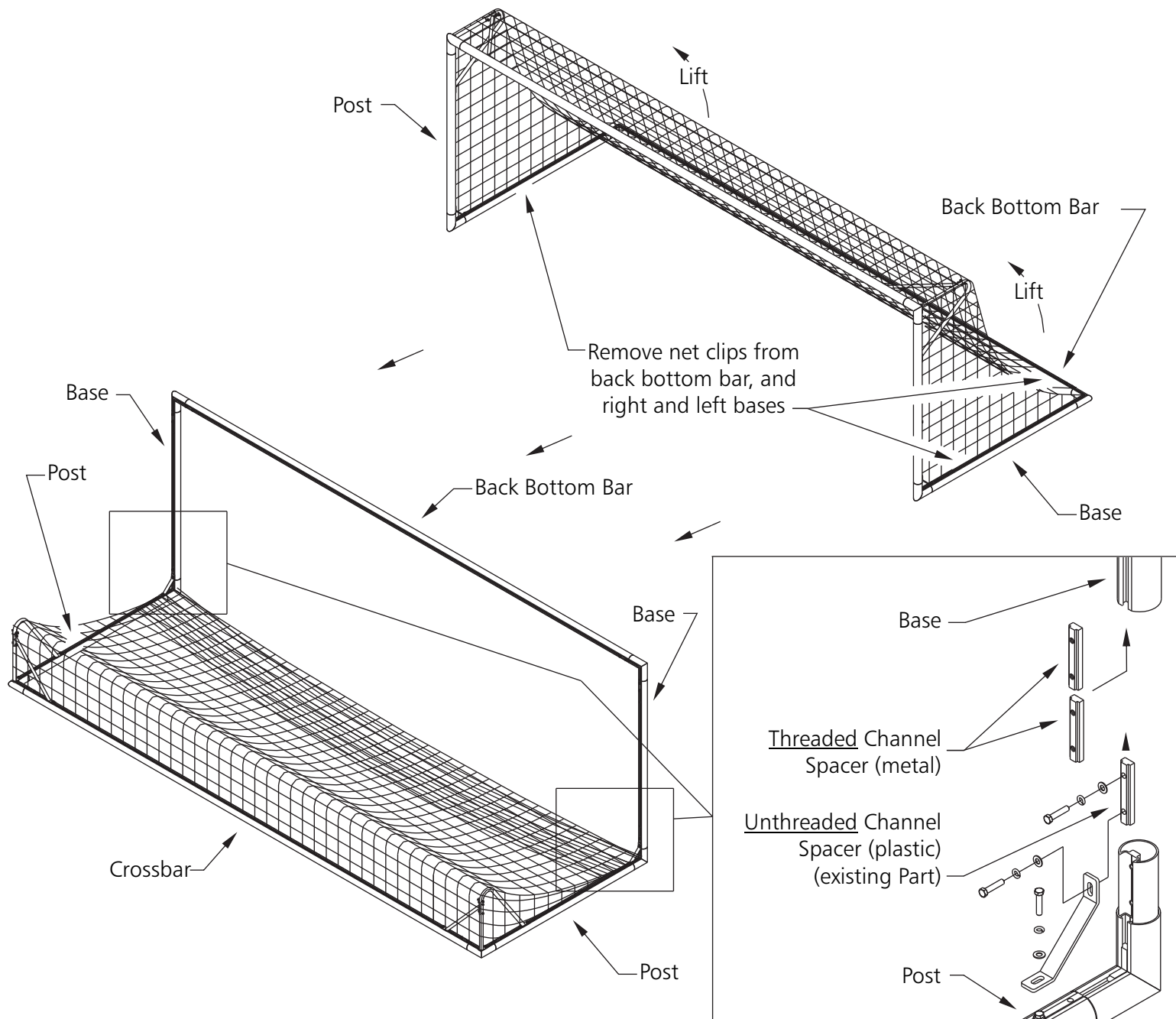
**\*\*\*CAUTION\*\*\***

This goal has been designed to be used for the game of soccer only. Goal posts must be anchored AT ALL TIMES and shall be secured against overturning. Do not climb on the net or goal framework at any time! All fastenings must be checked to insure they are fully tightened before and after each use of this product. Goal posts not in use must be disassembled and properly stored in a safe, secure area (See included Guidelines for Moveable Soccer Goal Safety.).

Assembled goal posts should not be left unattended. Remove nets when goals are not in use. Do not use this equipment during the threat of high winds. Goal posts should be checked for safety before and after each use. All warning and safety labels included with this product must be visible at all times.

Any modifications to this or any Kwik Goal product will void any and all warranties.

5. Turn goal onto posts. Remove left and right bases from posts and insert two threaded channel spacer into each base.



6. Re-assemble bases and post braces. Replace any worn or damaged hardware prior to assembly.

**\*\*\*CAUTION\*\*\***

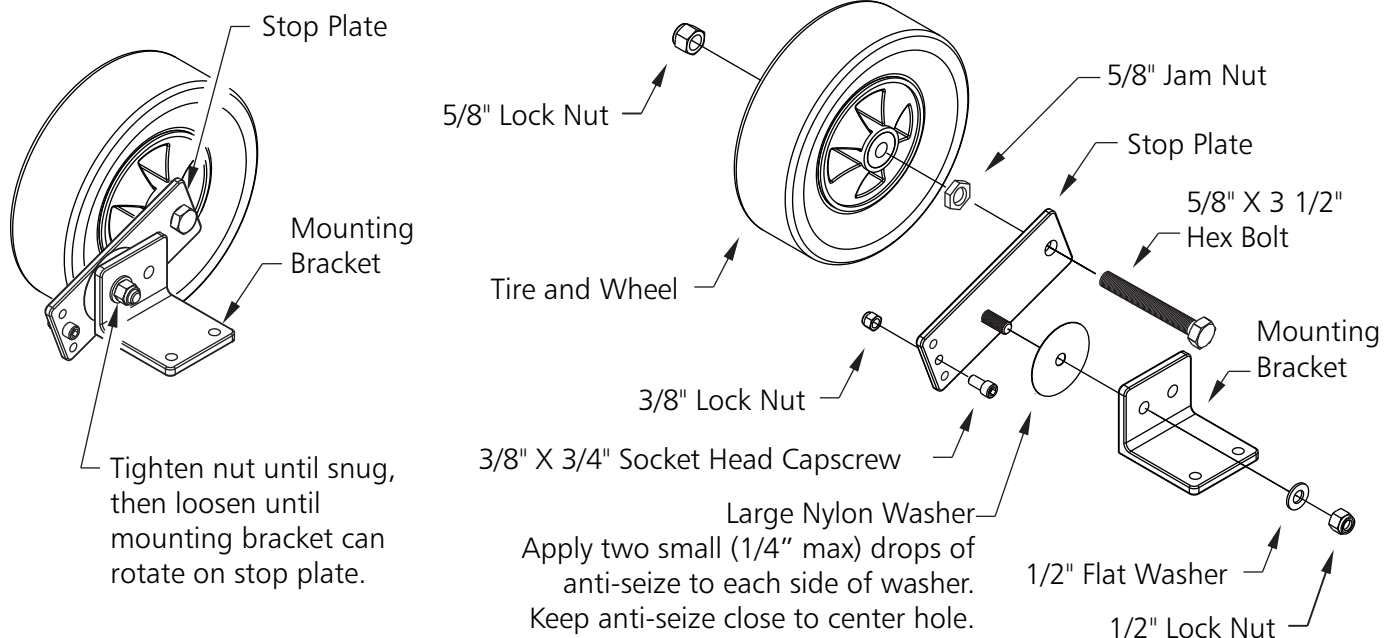
This goal has been designed to be used for the game of soccer only. Goal posts must be anchored AT ALL TIMES and shall be secured against overturning. Do not climb on the net or goal framework at any time! All fastenings must be checked to insure they are fully tightened before and after each use of this product. Goal posts not in use must be disassembled and properly stored in a safe, secure area (See included Guidelines for Moveable Soccer Goal Safety.).

Assembled goal posts should not be left unattended. Remove nets when goals are not in use. Do not use this equipment during the threat of high winds. Goal posts should be checked for safety before and after each use. All warning and safety labels included with this product must be visible at all times.

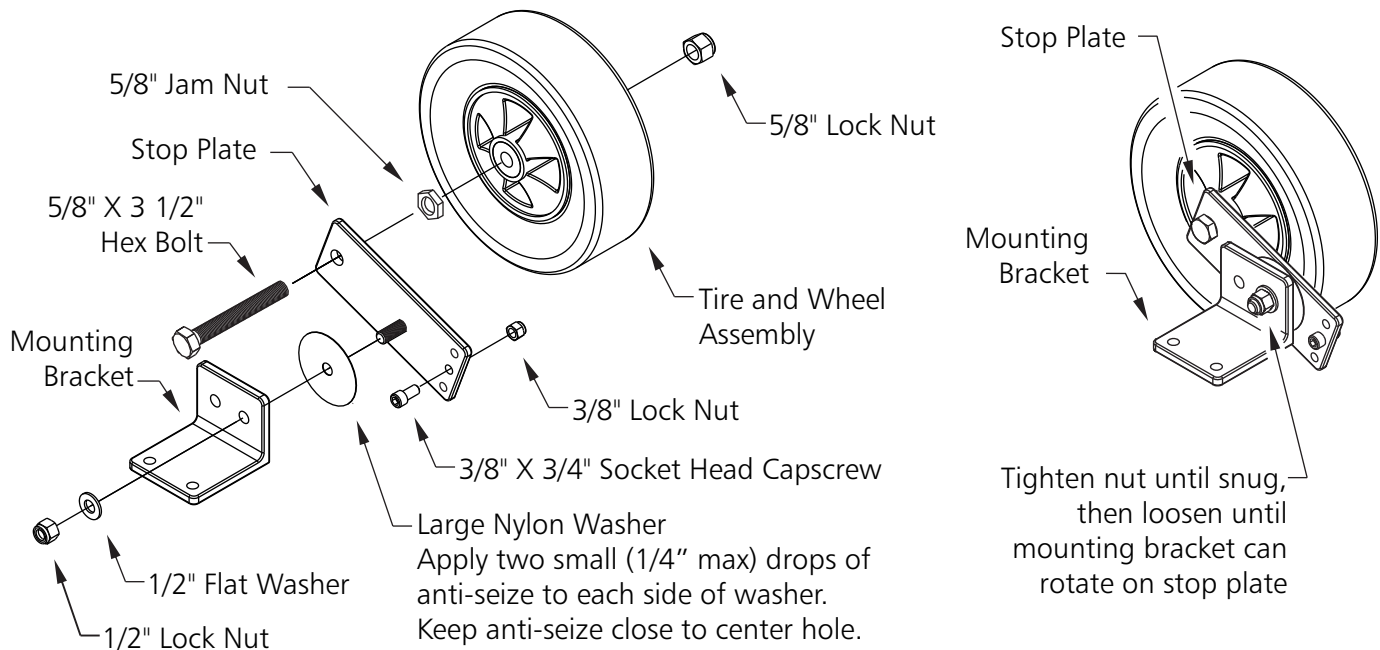
Any modifications to this or any Kwik Goal product will void any and all warranties.

7. Assemble left and right wheel assemblies.

## Left Side Wheel



## Right Side Wheel



**\*\*\*CAUTION\*\*\***

This goal has been designed to be used for the game of soccer only. Goal posts must be anchored AT ALL TIMES and shall be secured against overturning. Do not climb on the net or goal framework at any time! All fastenings must be checked to insure they are fully tightened before and after each use of this product. Goal posts not in use must be disassembled and properly stored in a safe, secure area (See included Guidelines for Moveable Soccer Goal Safety.).

Assembled goal posts should not be left unattended. Remove nets when goals are not in use. Do not use this equipment during the threat of high winds. Goal posts should be checked for safety before and after each use. All warning and safety labels included with this product must be visible at all times. Any modifications to this or any Kwik Goal product will void any and all warranties.

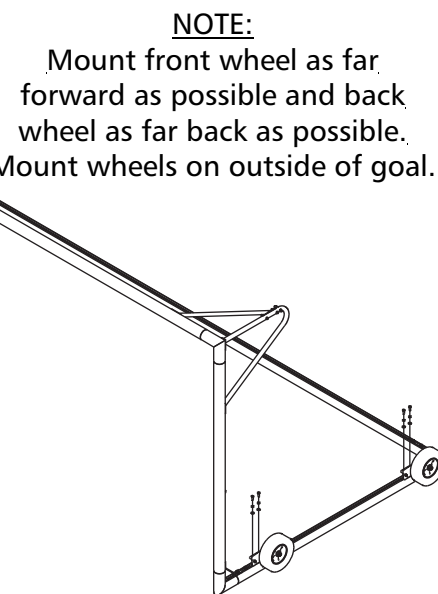
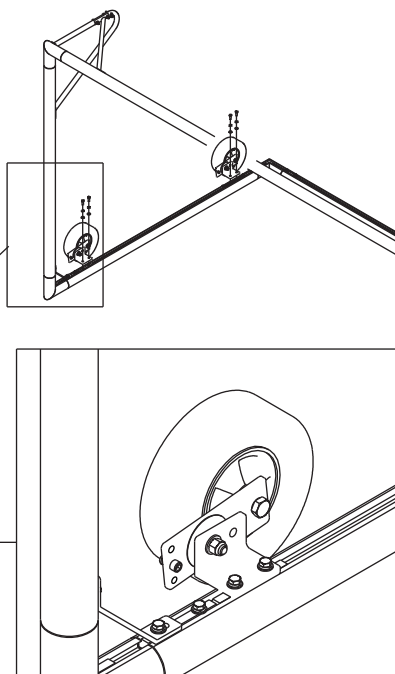
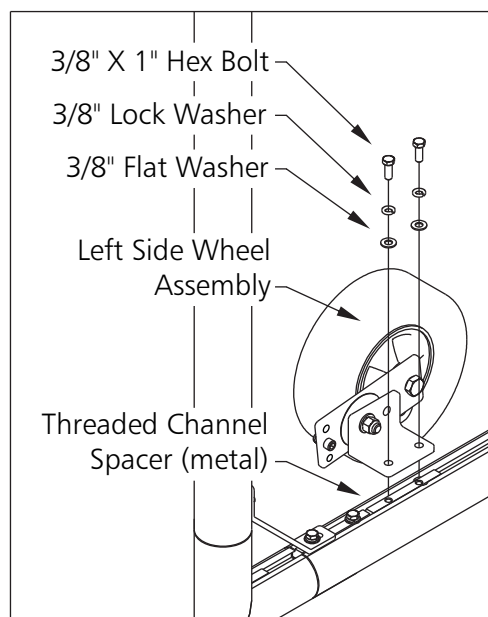
8. Attach left and right wheel assemblies to bases using 3/8" hex bolts, and threaded channel spacers.

**Do not cover anchor holes.**

## Left Side Wheel

### NOTE:

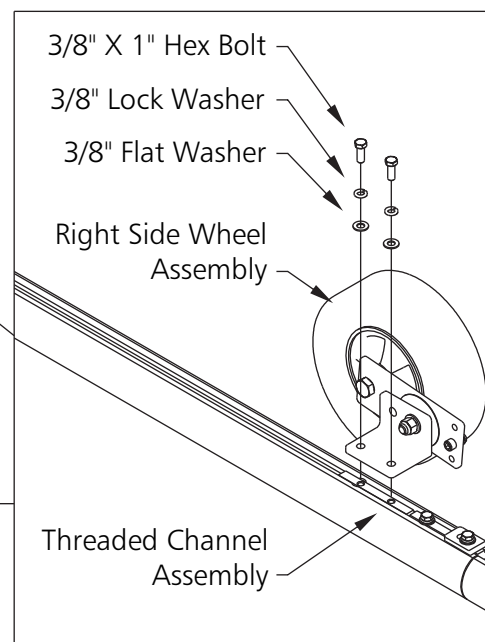
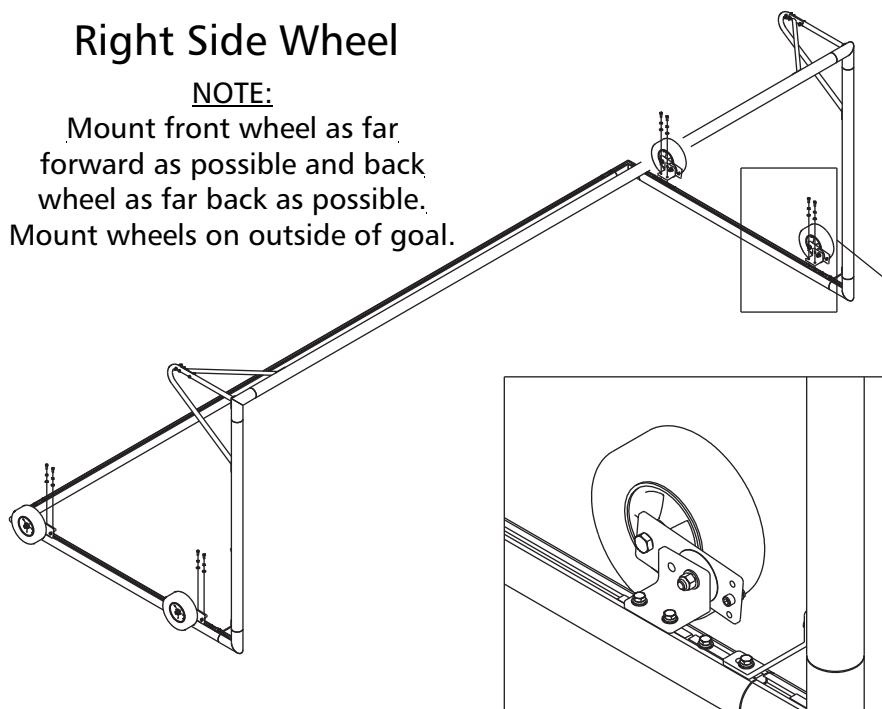
Mount front wheel as far forward as possible and back wheel as far back as possible. Mount wheels on outside of goal.



## Right Side Wheel

### NOTE:

Mount front wheel as far forward as possible and back wheel as far back as possible. Mount wheels on outside of goal.



### \*\*\*CAUTION\*\*\*

This goal has been designed to be used for the game of soccer only. Goal posts must be anchored AT ALL TIMES and shall be secured against overturning. Do not climb on the net or goal framework at any time! All fastenings must be checked to insure they are fully tightened before and after each use of this product. Goal posts not in use must be disassembled and properly stored in a safe, secure area (See included Guidelines for Moveable Soccer Goal Safety.).

Assembled goal posts should not be left unattended. Remove nets when goals are not in use. Do not use this equipment during the threat of high winds. Goal posts should be checked for safety before and after each use. All warning and safety labels included with this product must be visible at all times.

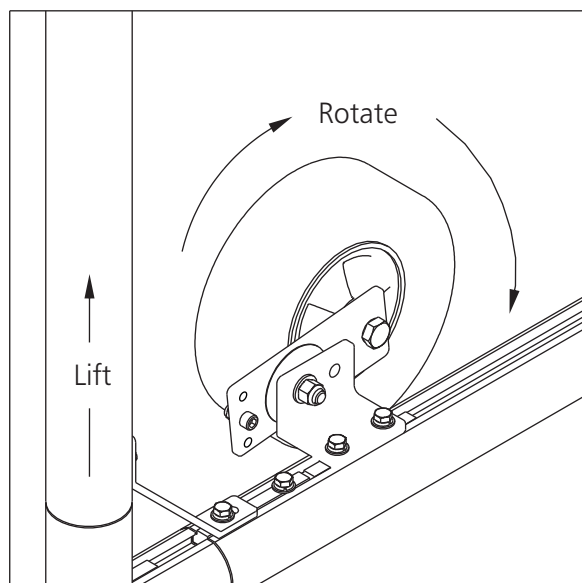
Any modifications to this or any Kwik Goal product will void any and all warranties.



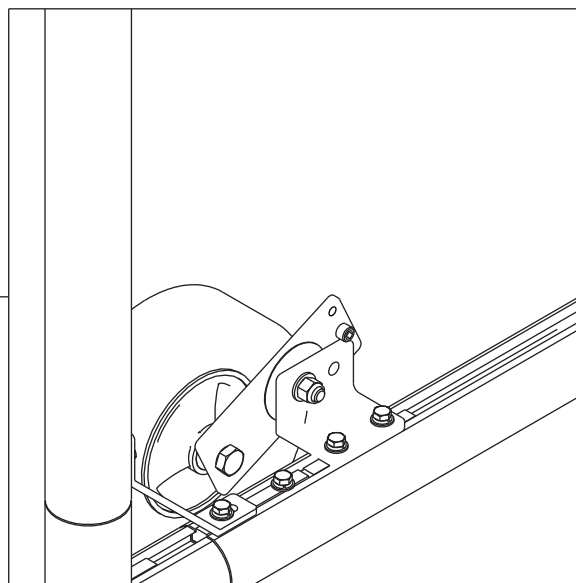
9. Lift goal and rotate wheels to down position to move goal.

### Left Side Wheel

Wheel in up position for play.

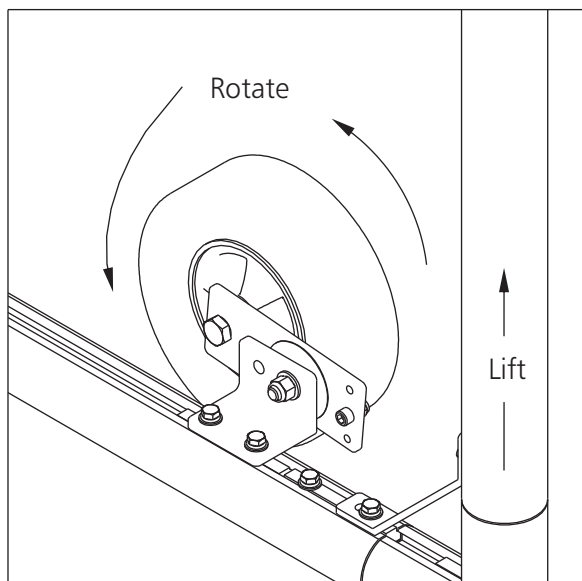


Wheel in down position to move goal.

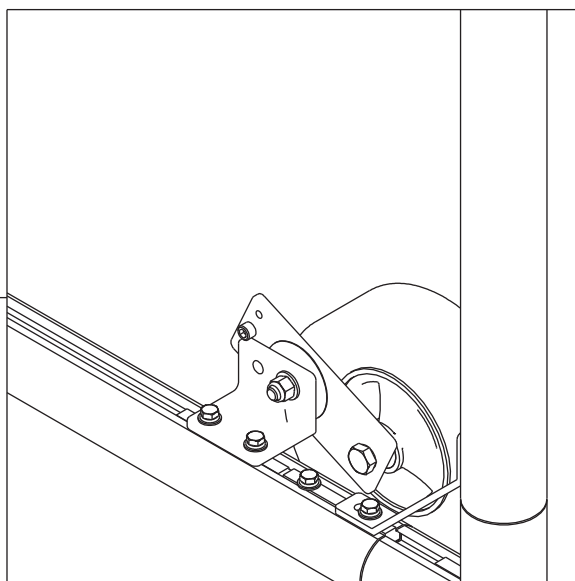


### Right Side Wheel

Wheel in up position for play.



Wheel in down position to move goal.



10. Anchor goal when finished.

To view videos on Kwik Goal product instructions, drills and demos please visit [kwikgoal.com/videos](http://kwikgoal.com/videos).

#### \*\*\*CAUTION\*\*\*

This goal has been designed to be used for the game of soccer only. Goal posts must be anchored AT ALL TIMES and shall be secured against overturning. Do not climb on the net or goal framework at any time! All fastenings must be checked to insure they are fully tightened before and after each use of this product. Goal posts not in use must be disassembled and properly stored in a safe, secure area (See included Guidelines for Moveable Soccer Goal Safety.).

Assembled goal posts should not be left unattended. Remove nets when goals are not in use. Do not use this equipment during the threat of high winds. Goal posts should be checked for safety before and after each use. All warning and safety labels included with this product must be visible at all times.

Any modifications to this or any Kwik Goal product will void any and all warranties.