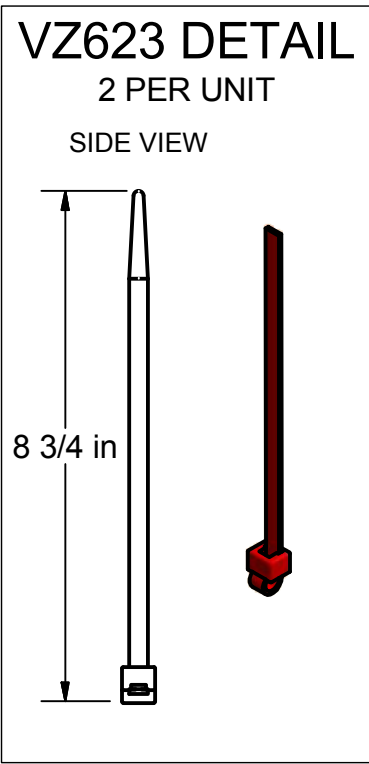
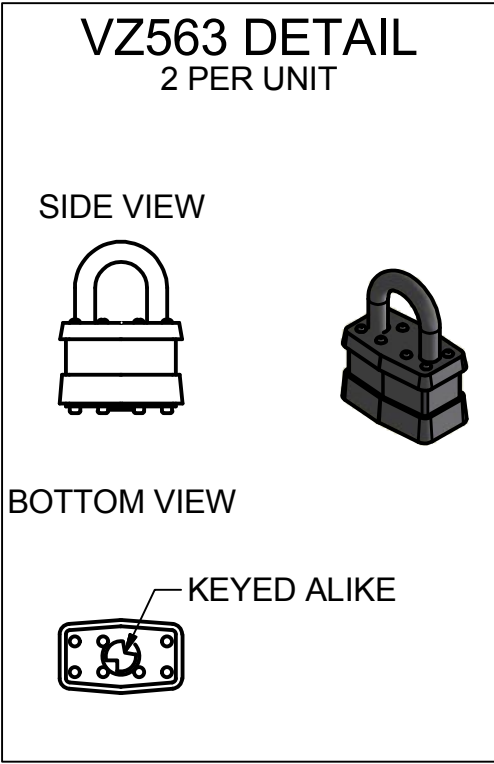


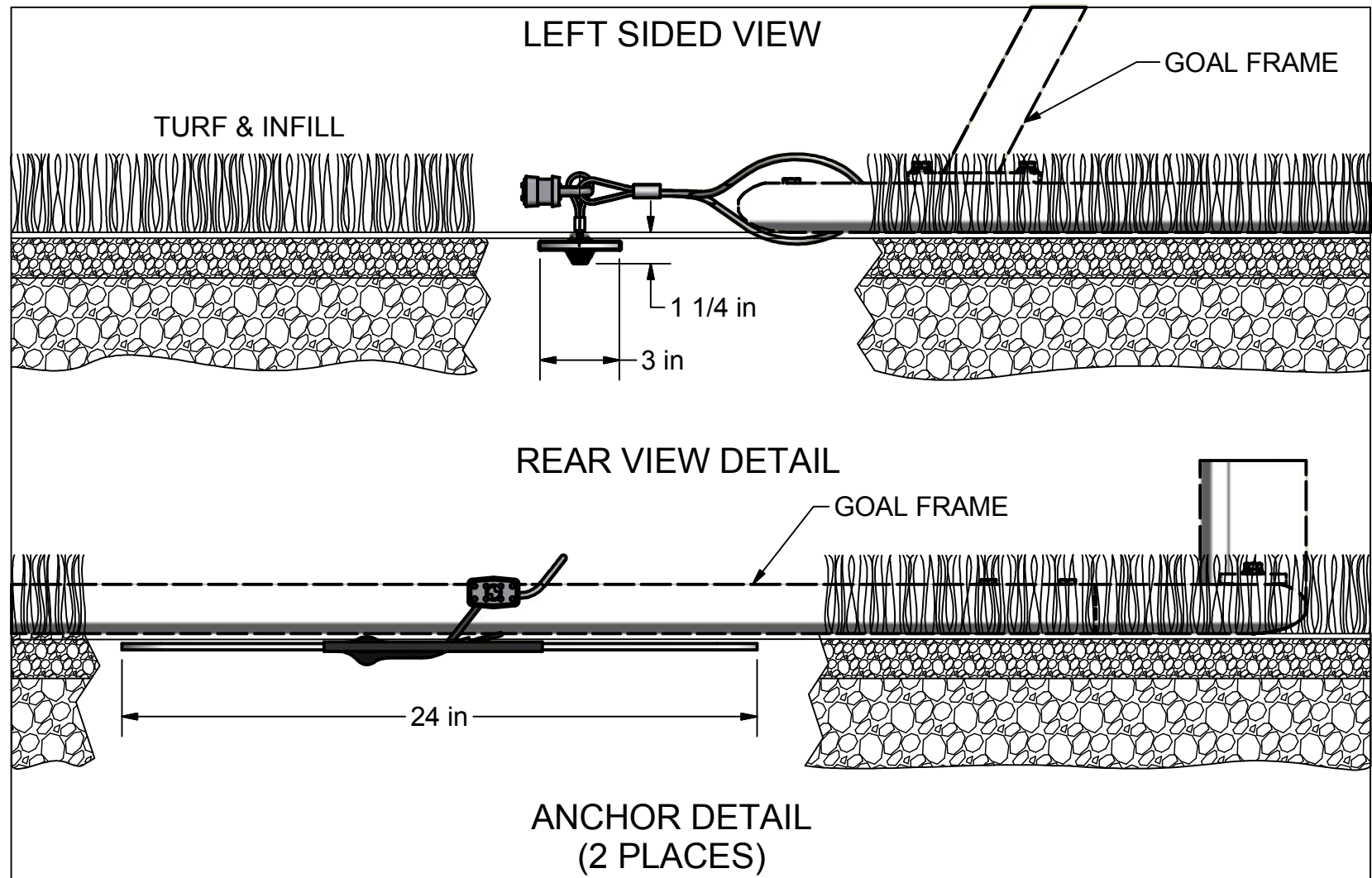
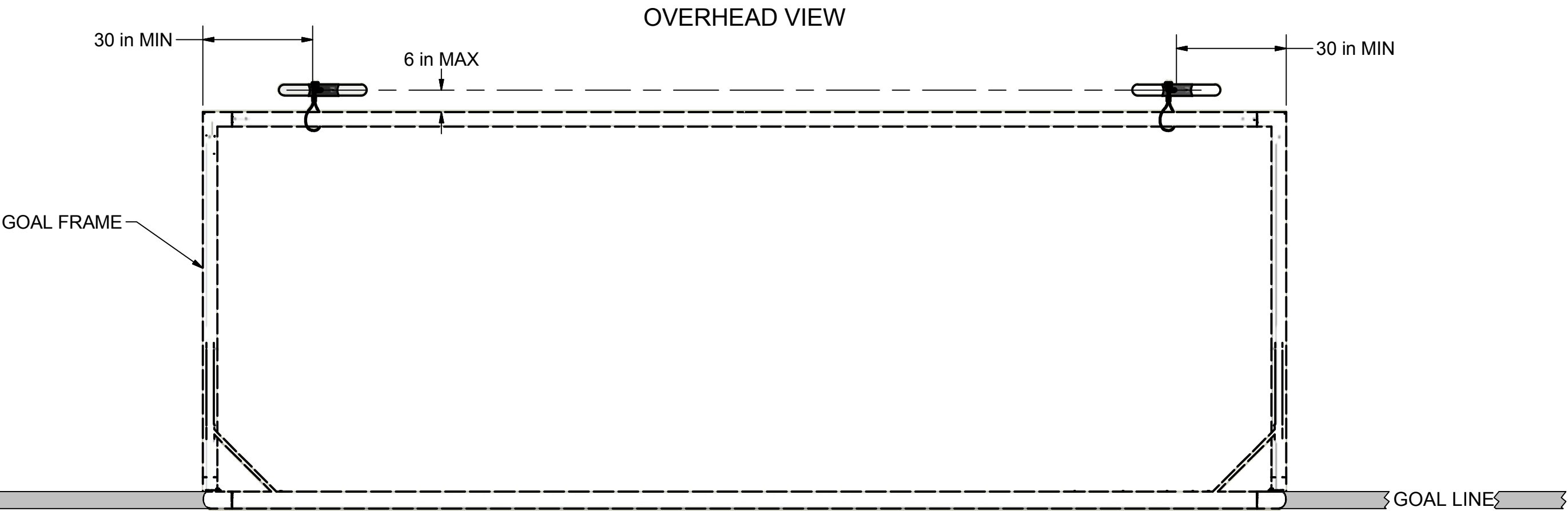
Parts List		
Part #	Qty	Description
UZ1258	2	TURF ANCHOR ASSEMBLY
VZ623	2	PLASTIC CABLE TIE
VZ563	2	PADLOCK
VZ588	2	CABLE LANYARD x 36"L
TZ111	20	3/16 X .501 Lge Pop Rivet



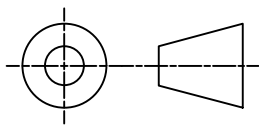

- FEATURES:
- 1) RECOMMENDED FOR ARTIFICIAL TURF FIELDS
REQUIRES LESS THAN 1 INCH OF SUBSURFACE PENETRATION
NO CONCRETE OR EXCAVATION REQUIRED
 - 2) INCLUDED:
ANCHOR PLATE ASSEMBLY - ACETAL BODY WITH STAINLESS STEEL HARDWARE
PADLOCKS - KEYED ALIKE
CABLE LANYARDS - WIRE ROPE, STAINLESS STEEL
 - 3) WEIGHT: 5 LBS. PER SET OF 2
 - 4) EACH ANCHOR RATED AT 350 LBS. WHEN INSTALLED PROPERLY
 - 5) TWO ANCHORS SECURES ONE FULL SIZE SOCCER GOAL IN MOST TURF SURFACES

Finish Info.

<p>THIRD ANGLE PROJECTION</p> <p>DIMENSIONS ARE IN INCHES UNLESS OTHERWISE SPECIFIED</p> <p>This item is the exclusive property of KWIK GOAL LTD. Reproduction or duplication without the express written consent of KWIK GOAL LTD. is strictly forbidden.</p>	<p>140 Pacific Drive Quakertown, Pa. 18951</p>	
	Approved By:	Part #: 10B5401
	Date:	
	Drawn By: cspeck	Desc: FLAT TURF ANCHOR
	Date: 2/16/2011	
	Sheet: 1 of 3	
Revision #: -		
Cad File: 10B5401.idw		



NOTES:
1) DIMENSIONS ARE FOR PLANNING PURPOSES. INSTALLATION
MUST BE IN ACCORDANCE WITH INSTALLATION INSTRUCTIONS.

 THIRD ANGLE PROJECTION	 KWIK GOAL [®] 140 Pacific Drive Quakertown, Pa. 18951	
DIMENSIONS ARE IN INCHES UNLESS OTHERWISE SPECIFIED	Approved By:	Part #: 10B5401
	Date:	
This item is the exclusive property of <u>KWIK GOAL LTD.</u> . Reproduction or duplication without the express written consent of <u>KWIK GOAL LTD.</u> . is strictly forbidden.	Drawn By: cspeck	Desc: FLAT TURF ANCHOR
	Date: 2/16/2011	
	Sheet: 2 of 3	
	Revision #: -	
	Cad File: 10B5401.idw	

Finish Info.