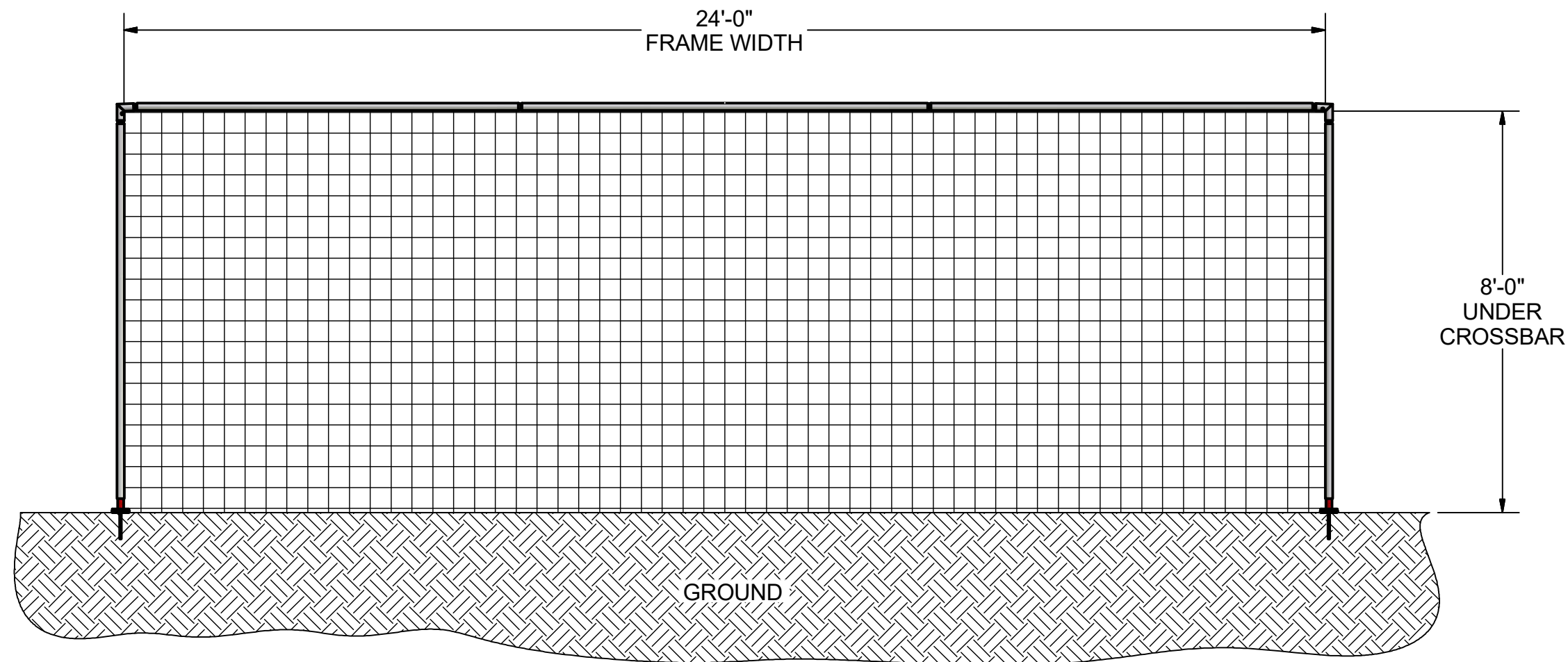
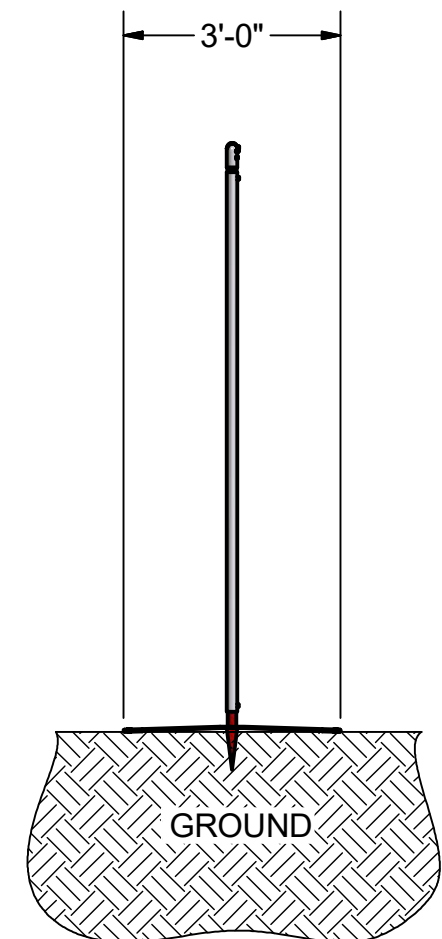


FRONT VIEW

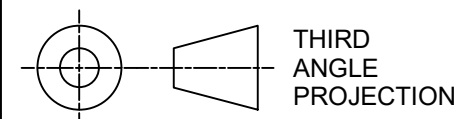


SIDE VIEW



NOTES:

- 1) ALUMINUM FRAME
- 2) FINISH: WHITE POWDER COATED
- 3) INCLUDED:
  - 3 mm, WHITE NET
  - NET FASTENERS
  - CARRY BAG
- 4) ASSEMBLED WEIGHT: 61 LBS.



DIMENSIONS ARE IN INCHES  
UNLESS OTHERWISE SPECIFIED

This item is the **confidential** property of **KWIK GOAL LTD.** Reproduction or duplication **without** the express written consent of **KWIK GOAL LTD.** is **strictly forbidden.**



Approved By: Willenbecher

Date: 9/1/2016

Drawn By: cspeck

Date: 8/17/2016

Sheet: 1 of 4

Revision #:

Cad File: WC-240.idw

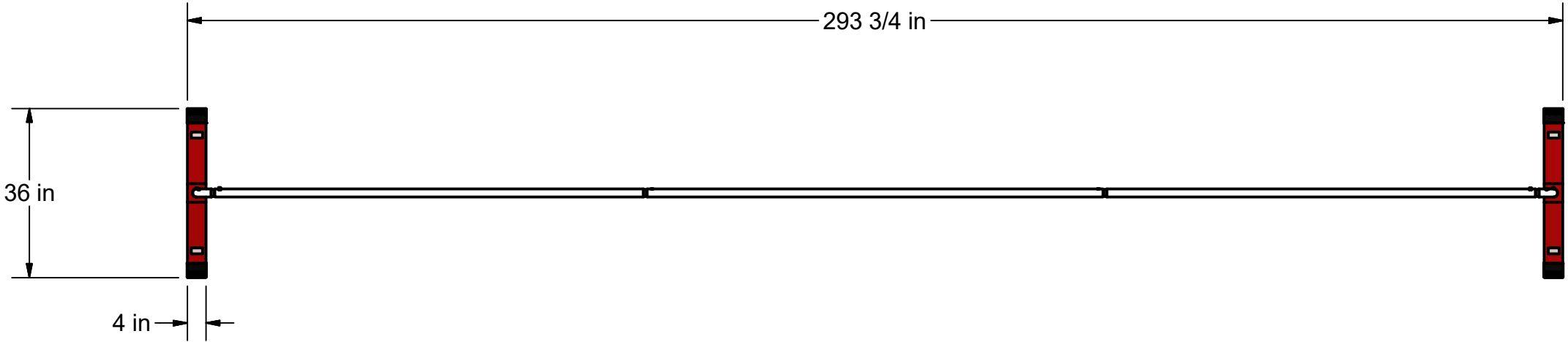
Part #:

**WC-240**

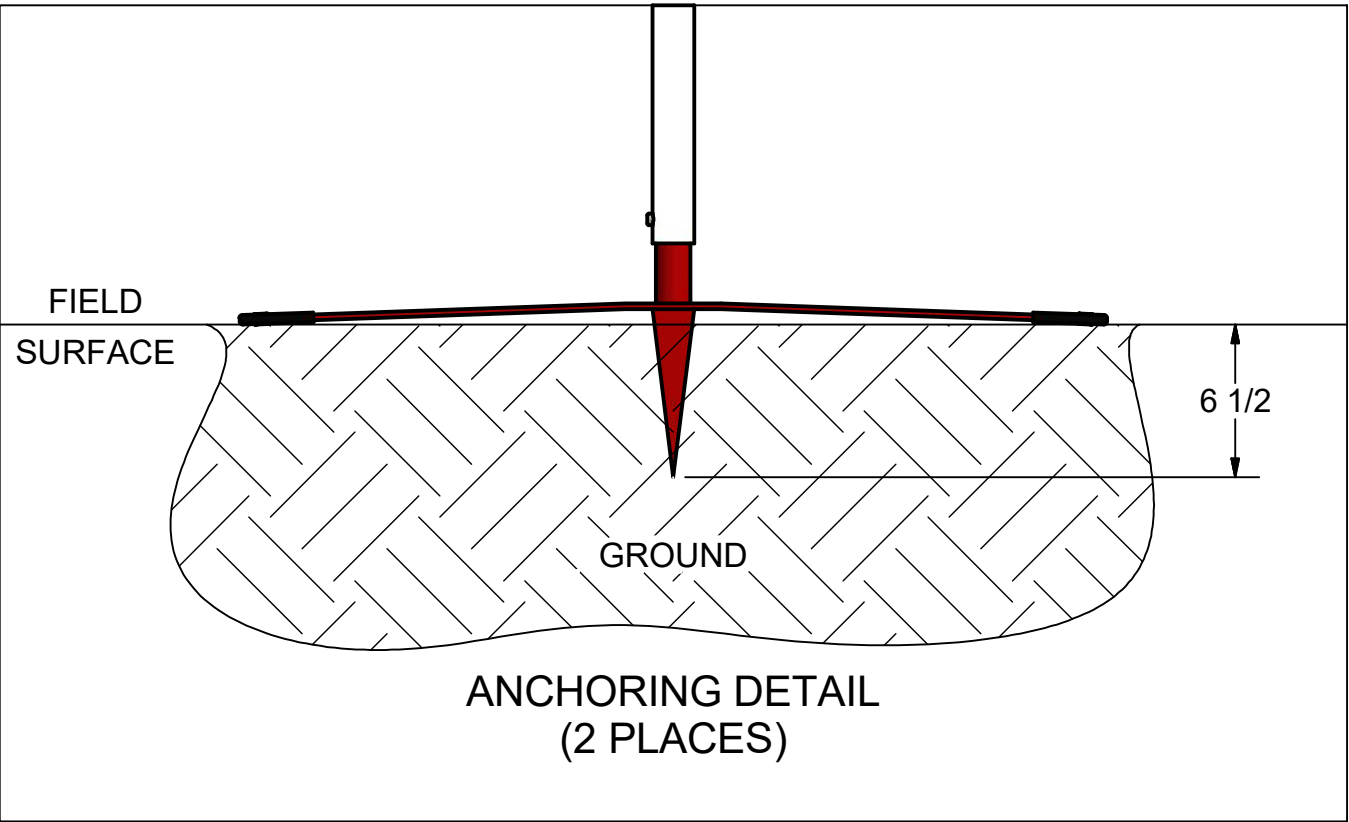
Desc:

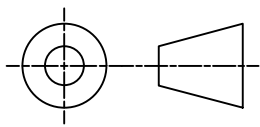

NXT TRAINING FRAME  
8' X 24'

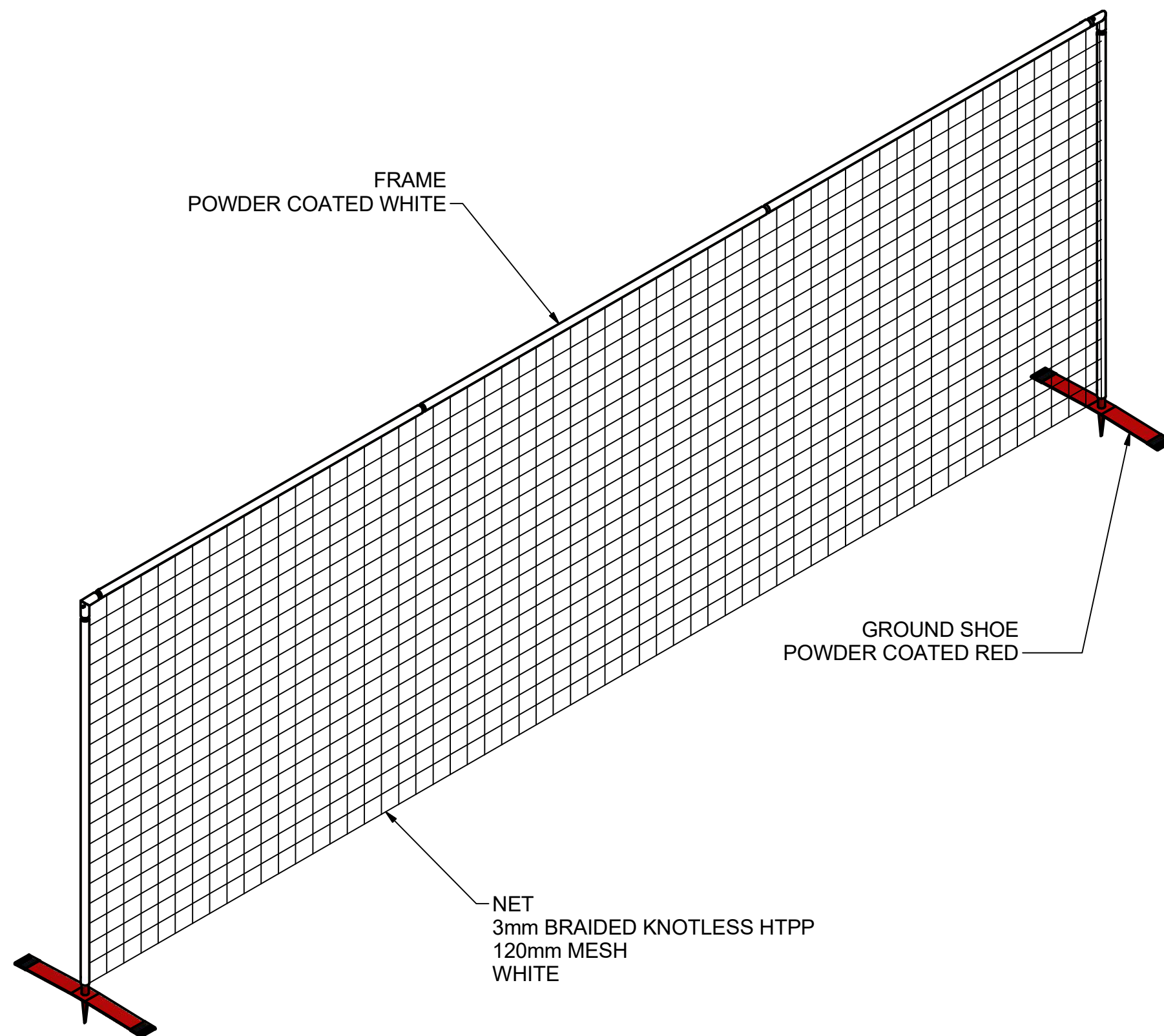
OVERHEAD VIEW



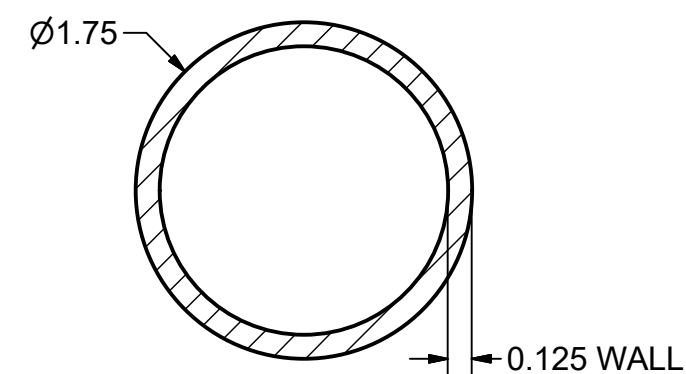
NOTES:  
1) DIMENSIONS ARE FOR PLANNING PURPOSES. INSTALLATION  
MUST BE IN ACCORDANCE WITH INSTALLATION INSTRUCTIONS.



 THIRD ANGLE PROJECTION	 <b>KWIK GOAL</b> <sup>®</sup> 140 Pacific Drive Quakertown, Pa. 18951	
DIMENSIONS ARE IN INCHES UNLESS OTHERWISE SPECIFIED	Approved By: Willenbecher	Part #:  <b>WC-240</b>
This item is the <b>confidential</b> property of <b><u>KWIK GOAL LTD.</u></b> Reproduction or duplication <b>without</b> the express written consent of <b><u>KWIK GOAL LTD.</u></b> is <b>strictly forbidden.</b>	Date: 9/1/2016	
	Drawn By: cspeck	Desc:  NXT TRAINING FRAME 8' X 24'
	Date: 8/17/2016	
	Sheet: 2 of 4	
	Revision #:	
	Cad File: WC-240.idw	

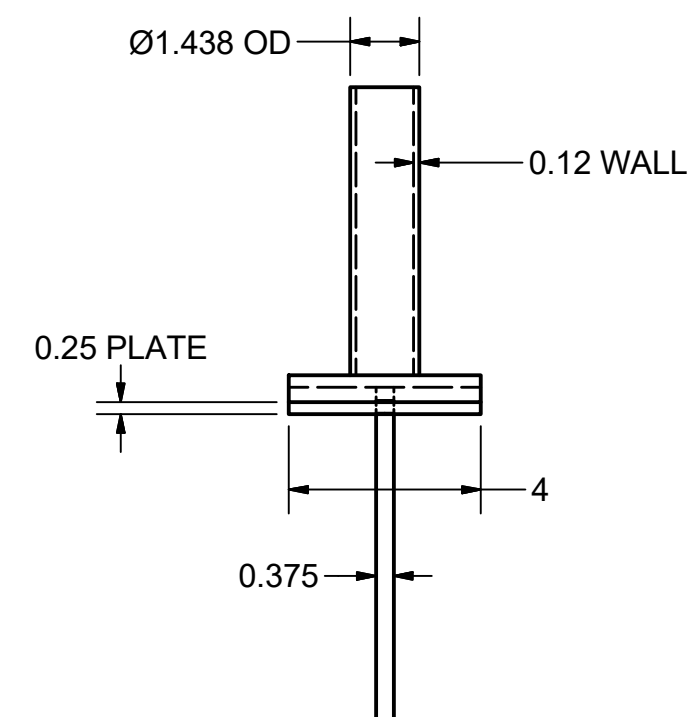


## MATERIAL DETAILS

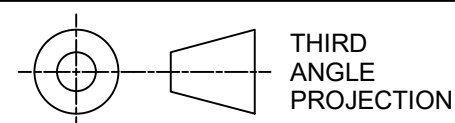


## FRAME

MATERIAL - ALUMINUM



GROUND SHOE  
MATERIAL - STEEL



DIMENSIONS ARE IN INCHES  
UNLESS OTHERWISE SPECIFIED

This item is the **confidential** property of **KWIK GOAL LTD.** Reproduction or duplication **without** the express written consent of **KWIK GOAL LTD.** is **strictly forbidden.**

**KWIKGOAL**® 140 Pacific Drive  
Quakertown,  
Pa. 18951

Approved By: Willenbecher

Date: 9/1/2016

Drawn By: cspeck

Date: 8/17/2016

Sheet: 3 of 4

Revision #:

Cad File: WC-240.idw

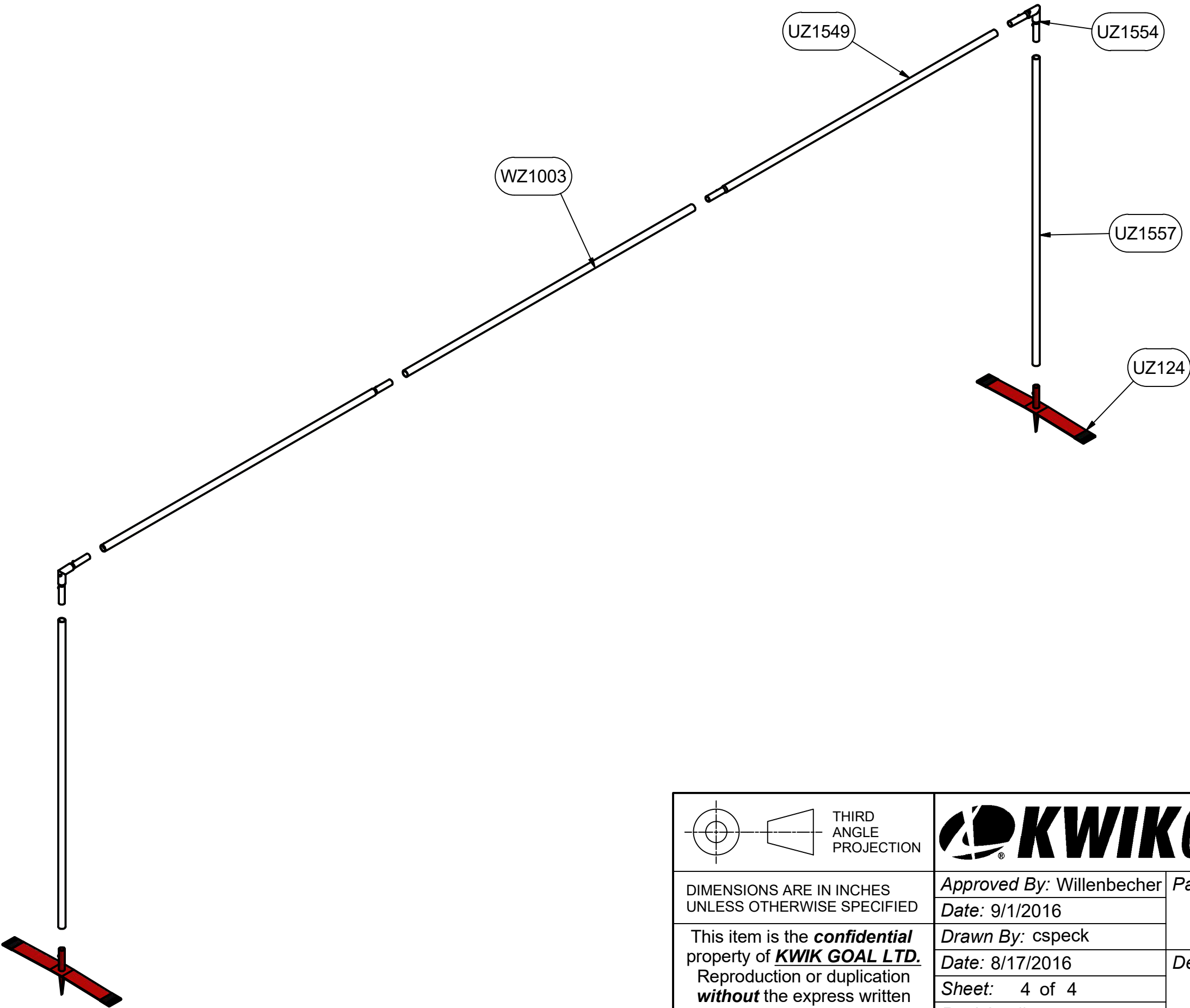
Part #:

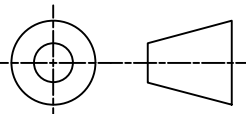

**WC-240**

Desc:

NXT TRAINING FRAME  
8' X 24'

PARTS LIST		
PART#	QTY	DESCRIPTION
UZ124	2	GROUND SHOE, NXT TRAINING FRAME
UZ1557	2	POST
UZ1554	2	CROSSBAR CORNER 92°
UZ1549	2	CROSSBAR SWAGE
WZ1003	1	CROSSBAR
WC-24GAW	1	NET, NXT TRAINING FRAME



 <p>THIRD ANGLE PROJECTION</p>	 <p>140 Pacific Drive Quakertown, Pa. 18951</p>	
<p>DIMENSIONS ARE IN INCHES UNLESS OTHERWISE SPECIFIED</p>	<p>Approved By: Willenbecher Date: 9/1/2016</p>	<p>Part #: <b>WC-240</b></p>
<p>This item is the <b>confidential</b> property of <b>KWIK GOAL LTD.</b> Reproduction or duplication <b>without</b> the express written consent of <b>KWIK GOAL LTD.</b> is <b>strictly forbidden.</b></p>	<p>Drawn By: cspeck Date: 8/17/2016</p>	<p>Desc: NXT TRAINING FRAME 8' X 24'</p>
	<p>Sheet: 4 of 4 Revision #: Cad File: WC-240.idw</p>	