

STATIONARY REAR MOUNT GOALS

Models 66T, 266, 4066, and 8566

Installation, operation, and Maintenance Instructions



WARNING

Failure to follow proper installation procedures can result in damage to goal and possible injury to personnel.

Read and understand all installation instructions before proceeding.

TOOLS REQUIRED:

#2 Phillips Screwdriver, 9/16" wrench, and level

INSTALLATION:

- 1) Remove goal and hardware from box and inspect for shipping damage. Also inspect the threaded hole in the center of the lower end of the backboard (See Figure 1). A 7/16" bolt must easily screw into this threaded hole. This bolt is required for proper installation. If necessary, clean the threads with a 7/16-14 tap (Not Included).
- 2) Remove the four cover plate screws and cover plate.
- 3) Remove the four carriage bolts from the hardware bag along with four nuts and flat washers.
- 4) Install the carriage bolts into the slots in the goal mounting area of the board (See Figure 2).
- 5) Slide the goal onto the four bolts and install a flat washer, lock washer, and hex nut on each bolt. Tighten by hand only to bring the goal flush with the board.
- 6) Install the 7/16" Hex bolt with washers through the bottom of the goal and into the threaded hole on the backboard. Tighten by hand until snug.
- 7) Torque the four carriage bolt nuts to 15 – 20 Ft-Lbs. Torque the 7/16" bolt to 20 – 24 Ft-lbs.
- 8) Place cover plate over the goal base and secure with the 4 self-tapping screws. Make sure all four screws are tight to prevent vibration and noise from the cover.
- 9) Install the net.

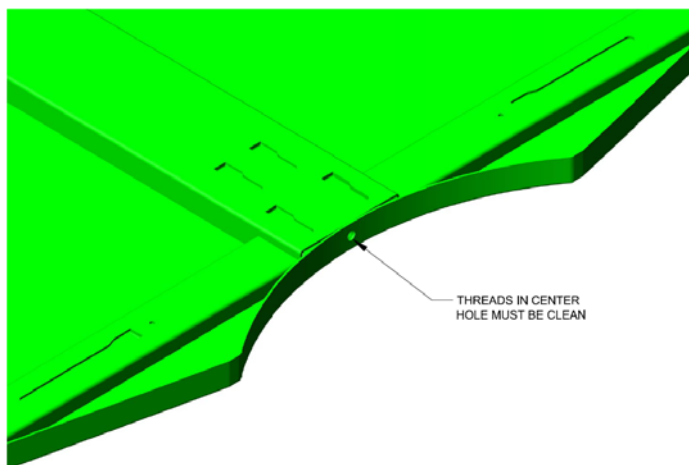


Figure 1

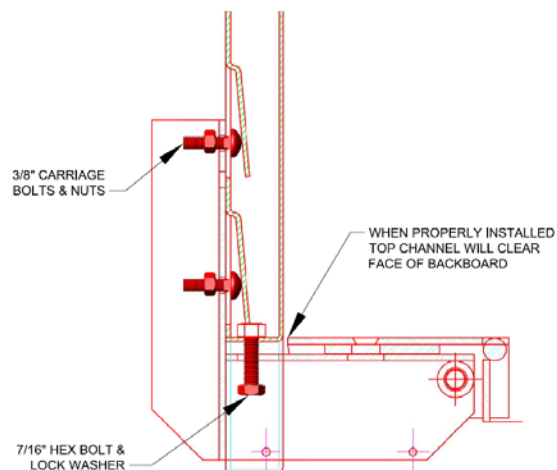


Figure 2



Gared Holdings, LLC
9200 E. 146th Street
Noblesville, IN 46060
800-325-2682

Gared Sports
Sales & Customer Service
707 North 2nd St., Suite 202
St. Louis, MO 63102
800-325-2682

STATIONARY REAR MOUNT GOALS

MAINTENANCE:

- 1) Twice annually, remove the cover plate and spray the swing rod and bushings with penetrating lubricant. Lock-Ease[®] graphite spray is recommended.
- 2) Annually remove the cover plate and inspect moving components for wear, welds for cracks, and goal for overall condition.

OPERATION:

This goal has been designed and manufactured to meet NCAA (except Division I) and NFSHSA specifications. The goal is factory set to deflect at 90 lbs.

See reverse side for adjustment instructions.



Gared Holdings, LLC
9200 E. 146th Street
Noblesville, IN 46060
800-325-2682

Gared Sports
Sales & Customer Service
707 North 2nd St., Suite 202
St. Louis, MO 63102
800-325-2682