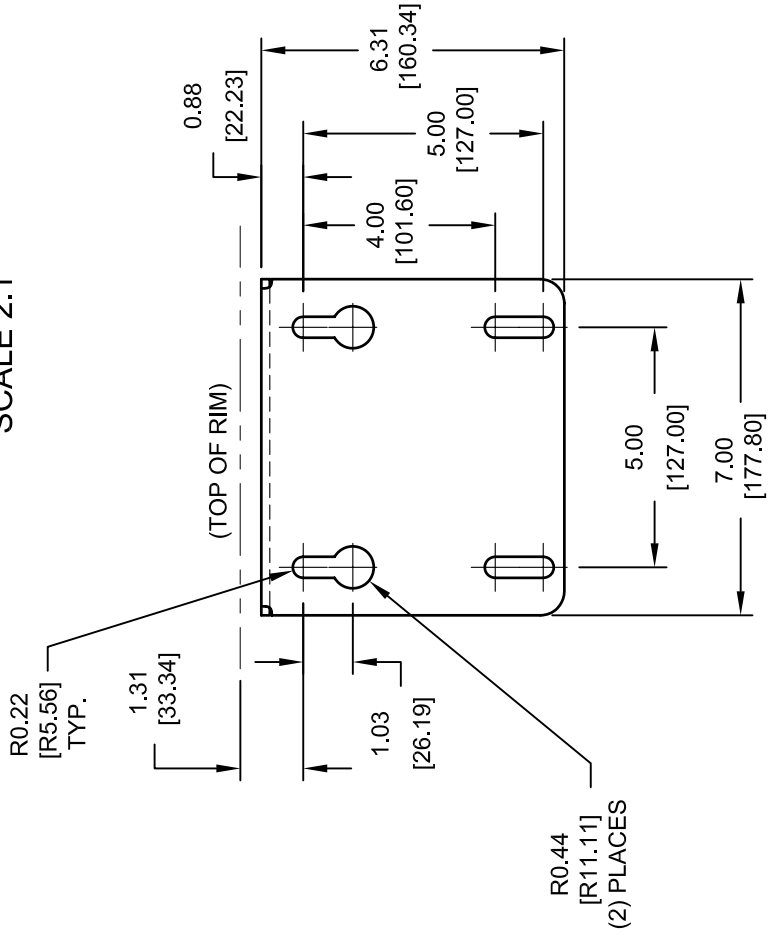
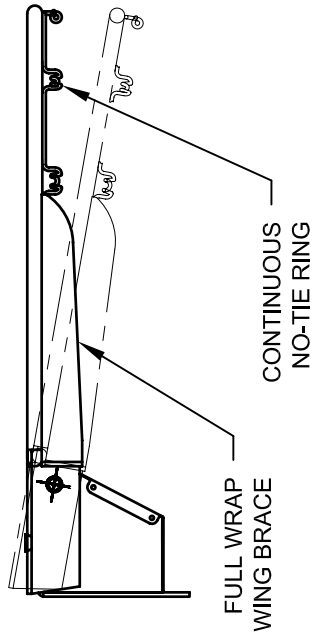


DUAL RETURN SPRINGS
SCALE 2:1



MOUNTING PLATE VIEW
SCALE 2:1



NOTE:
OFFICIAL ORANGE POWDER COAT FINISH.
GOAL IS SUPPLIED WITH ANTI-WHIP NYLON NET
AND MOUNTING HARDWARE.

REVISION		
REV.	DATE	BY
A	12/03/03	JJC
B	05/14/04	JJC
C	12/20/06	WAE
D	04/21/08	RWP



Gared Holdings, LLC
9200 E. 146th St. Noblesville, IN 46060

THIS DOCUMENT CONTAINS TRADE SECRET AND OTHER MATERIALS WHICH ARE PROTECTED BY CONFIDENTIALITY NOTICE AND AGREEMENT AND BY COPYRIGHT. ANY USE OR COPYING OF THIS DOCUMENT EXCEPT AS AUTHORIZED BY GARED HOLDINGS, LLC IS STRICTLY PROHIBITED.

1000 BREAKAWAY GOAL

DRAWN	CONNERLEY	DATE	05/08/03	MATERIAL	N/A
APPROVED	JJC	DATE	05/08/03	FINISH	AS NOTED
FILE LOC. Q:\Final Release\Specifications				DWG. NO.	1000
SIZE	SCALE	SHT. NO.	PART NO.	REV	
A	NONE	1 OF 1	1000	D	



MODEL 1000

STANDARD BREAK-AWAY GOAL

The 1000 goal shall be constructed with a balanced two spring design. Goal shall deflect in degrees according to the applied pressure. Goal shall have an official sized 18" ring of 5/8" diameter steel and shall be supported by a continuous welded wrap around brace. Goal shall meet NCAA and high school requirements.

Goal shall have a continuous no tie ring and orange powder coated finish. Anti-whip net and hardware shall be included. Universal goal mounting plate will fit the hole pattern for most 42" and 48" rectangular backboards and most fan-shaped backboards.

ACCESSORIES

BACKBOARDS

Compatible backboards are models LXP4200, AFRG42, RG, AFRG48, FSGII, 1301B, 1342B, 1370B, 1401B, 1442B, 3010RG, 3011RG, ARG, 3050RG, BB48A38, BB60A38, BB60G38, BB72A38, BB72G50, and GP72422. See backboard section in specification manual.