

# 1792 POWR-STEEL VOLLEYBALL SYSTEM

## SLEEVE-TYPE 3" OD STEEL VOLLEYBALL CENTER STANDARD

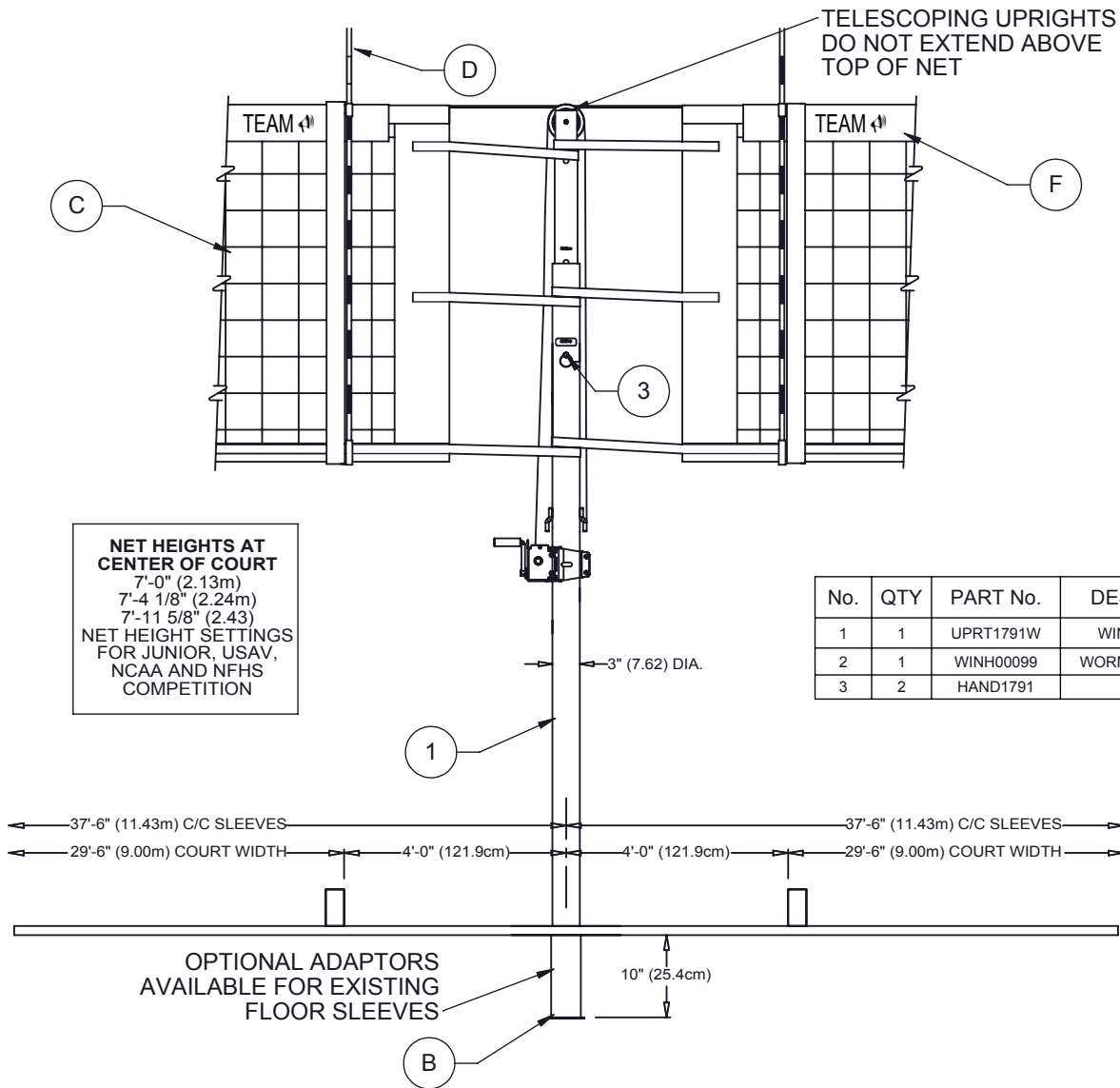
**Porter**

WWW.PORTERATHLETIC.COM/FACILITY

VOLLEYBALL SPECIFICATION SHEET

V-1792

7/5/2016



- \_\_\_ - 1792 POWR-STEEL VOLLEYBALL STANDARD (EACH)
- \_\_\_ - 1792-9XX POWR-STEEL VOLLEYBALL STANDARD WITH PAD (EACH)
- \_\_\_ - 1792-9XXSP POWR-STEEL VOLLEYBALL STANDARD WITH GRAPHIC PAD(EACH)

QTY	PART No.	DESCRIPTION	No.	PAGE No.
	VARIOUS	3" DIA FLOOR SLEEVE - EACH	B	VARIOUS
	2295	UNIVERSAL VOLLEYBALL NET - EACH	C	V-2295
	2296	POWR-LINE NET ANTENNA - PAIR	D	V-2296-1
	02297-000	BOUNDARY MARKERS - PAIR	E	V-2296-1
	8391XX	UPRIGHT CENTER PAD - EACH (NOT SHOWN)		V-839
	NETSLVE0032	CUSTOM PRINTED NET TAPE	F	V-0032
	00827-300	3 1/2" TO 3" SLEEVE ADAPTER (NOT SHOWN)		V-827-300

**Porter**<sup>®</sup>

888-277-7778 PORTER@PORTERATHLETIC.COM  
 © COPYRIGHT 2016 PORTER ATHLETIC - ALL RIGHTS RESERVED

PROJECT NUMBER \_\_\_\_\_

PROJECT NAME \_\_\_\_\_

# 1792 POWR-STEEL VOLLEYBALL SYSTEM

## SLEEVE-TYPE 3" OD STEEL VOLLEYBALL CENTER STANDARD

### SPECIFICATIONS

#### PORTER No. 1792 POWR-STEEL VOLLEYBALL CENTER STANDARD (EACH)

Standard shall be designed for multiple court use when used in conjunction with No. 1791 Powr-Steel volleyball end standards.

Volleyball post shall consist of one telescoping type uprights and one winch. Post shall be designed with height adjustment settings to meet all USAV, NCAA and NFHS requirements for competition. Aluminum posts, or posts that do not telescope (that extend above the top of the net) will not be approved as equal.

Bottom upright shall be 3" (7.62cm) O.D. high strength 6Ga steel. Upright shall be designed to fit standard 3" (7.62cm) floor sleeves for new construction or existing floors. Specify No. 790 or 792 type floor sleeve. Upright shall be powder coated in a corrosion resistant navy blue. Bottom of upright shall be provided with a special adjustable rubber foot to protect finished floors when moving standard. Rubber foot shall adjust in height to accommodate ground sleeves installed too deep. Net tie offs shall be welded on for additional tensioning strength.

Upper telescoping (adjustable) upright shall be 2 1/2" (6.35cm) O.D. 11 Ga plated steel. Upper end of the upright shall be equipped with a pulley to reduce cable drag and undue tension on the entire system. Pulley to be made of cast iron for additional strength and stability. Upper telescoping upright shall be adjustable in height by means of a high strength pull pin, and shall be furnished with cut out markings for the following heights:

AGE GROUPS	FEMALE/REVERSE CO-ED	MALE/CO-ED
70 years and above	2.19 m (7'-2 1/8")	2.29 m (7'-6")
55 years and above	2.19 m (7'-2 1/8")	2.38 m (7'-9 5/8")
45 years and above	2.19 m (7'-2 1/8")	2.43 m (7'-11 5/8")
15-18 years and under	2.24 m (7'-4 1/8")	2.43 m (7'-11 5/8")
13-14 years and under	2.24 m (7'-4 1/8")	2.24 m (7'-4 1/8")
11-12 years and under	2.13 m (7'-0")	2.13 m (7'-0")
10 years and under	1.98 m (6'-6")	2.13 m (7'-0")

*NOTE: NCAA and NFHS rules stipulate there be no more than 3/4" of sag in the net when fully tensioned.*

Tensioning reel shall be a vertical lift, worm gear winch with steel frame. Frame construction shall be of interlocking steel for high rigidity and precise alignment, semi enclosed for safety, and powder coated for corrosion resistance. Self-locking worm drive will prevent snap back or loss of tension. Net shall attach directly to the winch eliminating the need for straps.

1792 upright shall consist of one winch post.

Weight of post shall not exceed 55 pounds.

Specify No. 2295 nets.

Specify No. 00827-300 sleeve adapter for use on 3 1/2" ground sleeves.